

ARCHITECTURAL

Wallwash Brochure

Illuminating vertical surfaces with precise calculation and expertise.

ZANEEN



Table of Contents

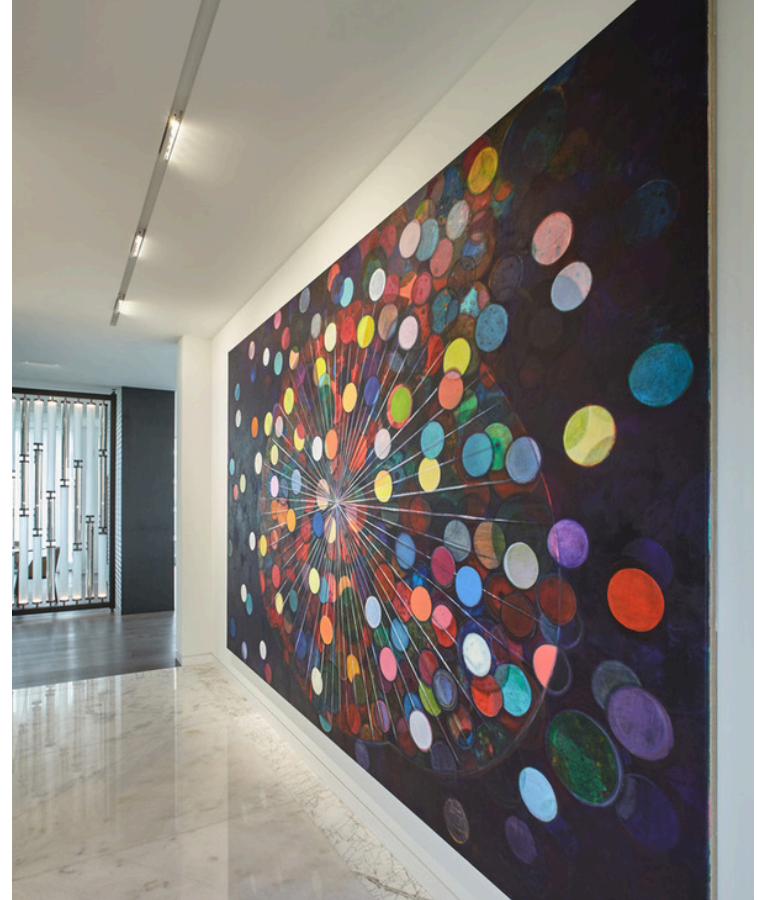
What is Wallwashing, and how do you do it?	3
Where is Wallwashing best suited?	5
Wallwash products	Click below for product details 7
Centriq Wallwash	Magiq Wallwash	
Magiq Hollow Wallwash	Oiko Pro	
Magiq Pro	Slider Wallwash	
Expert Collaboration	20
Conclusion	21

What is Wallwashing, and how do you do it?

Wallwashing is a popular lighting technique used in the design industry to evenly illuminate vertical surfaces, effectively eliminating shadows to enhance the appearance of a space. By washing a wall with light, this technique can highlight textures, architectural details, or displays, adding depth and dimension to any setting.

The benefits of wallwashing are multifaceted. It not only makes spaces feel larger and more open but also draws attention to specific design elements, whether art, shelving, or structural features.

Achieving a successful wallwash effect involves a careful positioning of fixtures at, or above, the ceiling. By using precise calculations to determine the ideal set-back ratio – the distance between the fixture and the wall – along with other critical factors, to ensure uniform light distribution. These calculations help avoid scallops, shadows, hotspots, and uneven lighting, resulting in a continuous wash of vertical light across the wall.

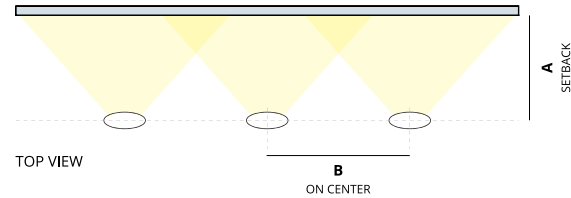


A related technique, ceiling washing, involves uniformly illuminating a ceiling surface to create a polished look. This approach can create a soft, ambient glow that visually elevates the space. Wallwashing is a powerful tool in lighting design, shaping the atmosphere of a room while accentuating key design details.

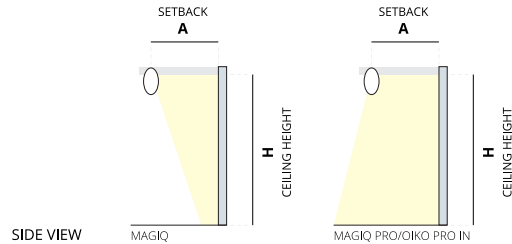
Diagram images will be used to communicate the installation and proper dimensions – see image below.

Recommended Wallwash Distances

Simplified diagrams - it does not reflect the specific photometry of the inserts. Setback and on center spacing depends on the color and texture of your walls. The calculations below were completed with a white wall.



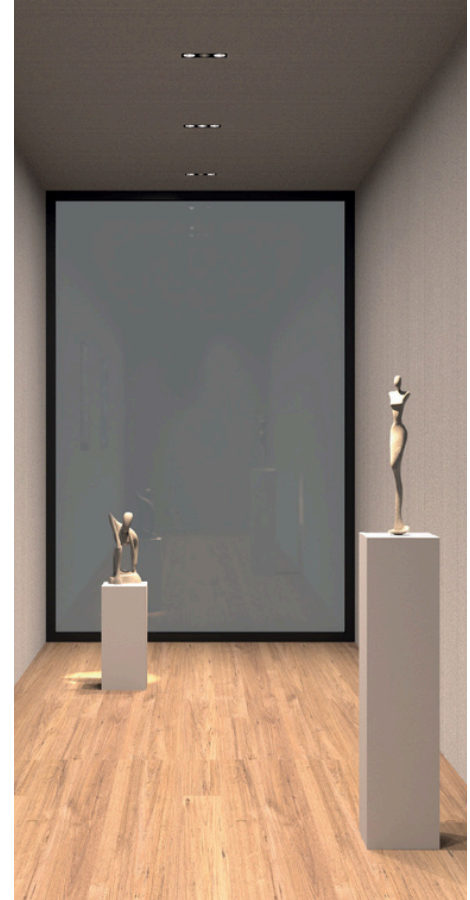
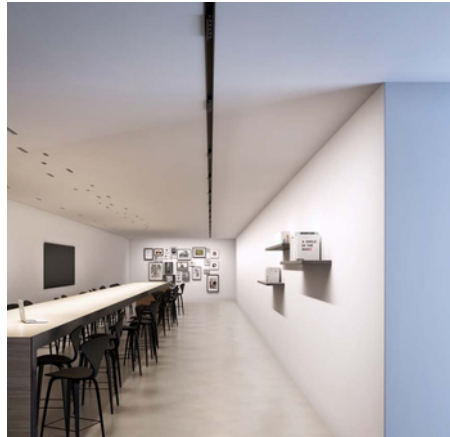
MAGIQ HOLLOW WALLWASH			MAGIQ WALLWASH			MAGIQ WALLWASH PLUS		
H	A	B	H	A	B	H	A	B
7' 6.5"	17.5" - 29"	25" - 43"	9' 10"	32" - 35"	40" - 48"	9' 10"	38" - 41"	46" - 54"
8' 2.5"	19" - 32"	28" - 47"	11' 6"	35" - 40"	48" - 56"	11' 6"	41" - 46"	54" - 62"
8' 10"	21" - 34"	31" - 51"	13'	40" - 48"	56" - 63"	13'	46" - 54"	62" - 69"
9' 10"	22.5" - 37.5"	34" - 55"	14' 9"	48" - 56"	63" - 71"	14' 9"	54" - 62"	69" - 77"

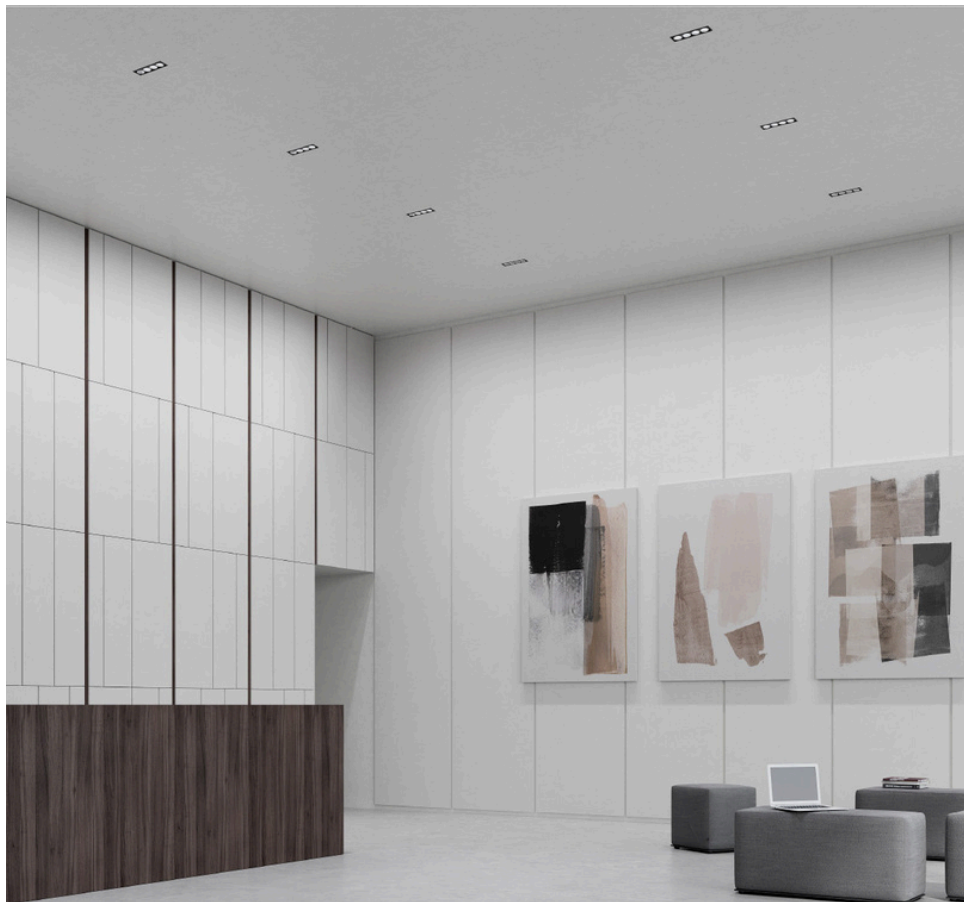


MAGIQ PRO WALLWASH			OIKO PRO IN WALLWASH		
H	A	B	H	A	B
7' 6.5"	17" - 29"	27" - 44"	7' 6.5"	18" - 30"	27.5" - 45"
8' 2.5"	19" - 33"	29" - 48"	8' 2.5"	19.5" - 33.5"	29.5" - 49"
8' 10"	21" - 35"	31" - 52"	8' 10"	21.5" - 35.5"	31.5" - 53"
9' 10"	23" - 38"	35" - 58"	9' 10"	23.5" - 39"	35.5" - 59"

Where is Wallwashing best suited?

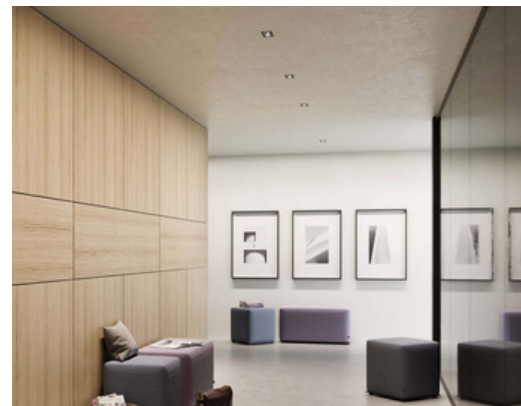
The wallwash lighting technique is versatile and can enhance various settings, including retail, commercial, hospitality, and residential applications. In retail and commercial environments, wallwashing is particularly effective for creating an evenly lit backdrop, showcasing products, artwork, or branding elements in the best possible light. By eliminating shadows and delivering consistent brightness across walls, this technique ensures that displays capture attention and appear vibrant and inviting. Wallwashing can also set a professional tone in commercial spaces, contributing to a polished, well-organized atmosphere.





In hospitality and residential settings, wallwashing adds sophistication by accentuating architectural features and creating a sense of openness. This technique can make spaces feel larger and more inviting, with a clean, balanced visual effect. By highlighting textured walls, alcoves, or decorative details, wallwashing introduces subtle focal points that add depth and interest to interiors.

Whether used for highlighting design elements or simply to enhance the ambiance of a space, wallwash lighting delivers both functional and aesthetic benefits, making it an essential tool for modern interior and architectural design.



Wallwash Products



Centriq Wallwash



Magiq Hollow Wallwash



Magiq Pro



Magiq Wallwash



Oiko Pro



Slider Wallwash

Centriq Wallwash

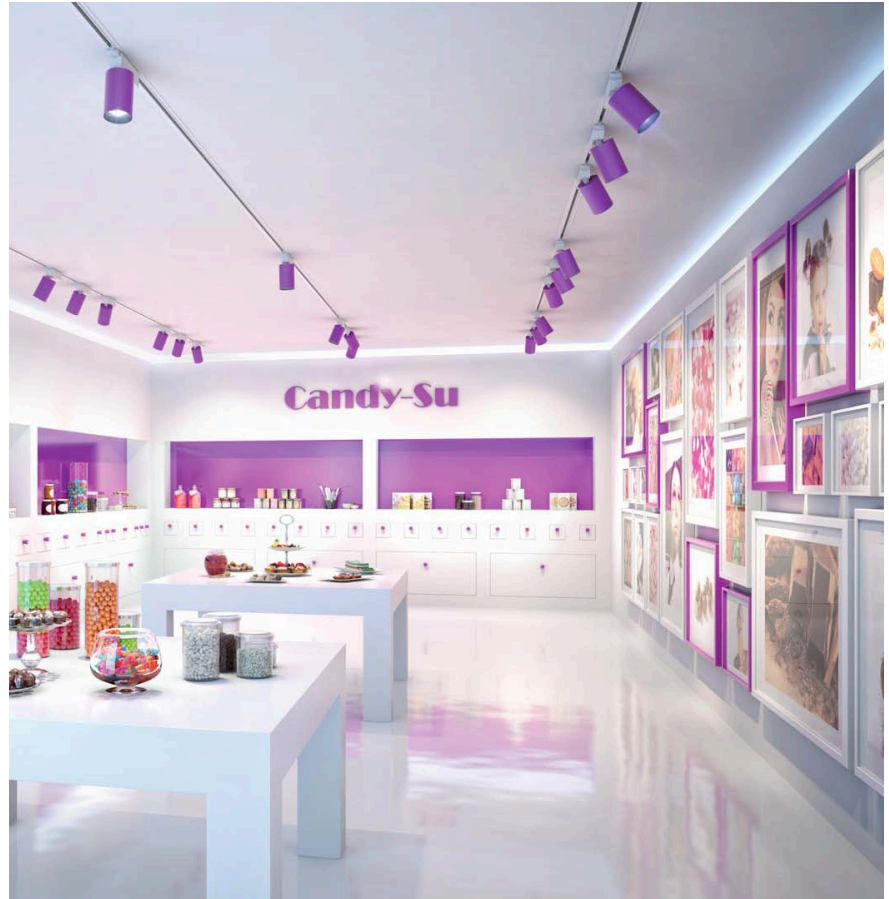
The Centriq Wallwash series is an innovative track light series featuring a unique, multifaceted spoon-shaped reflector, arranged at three different angles within the fixture's housing.

The strategically placed cut-off apertures in front of the reflectors help to shape the beam lengthwise, producing a round light source that creates a rectangular beam – perfectly suited to the proportions of walls.

Each facet of the reflector is precisely calculated to deliver wide, even illumination without multiple shadows. With its Vertical Boost technology, Centriq Wallwash can uniformly illuminate walls up to 4.5 meters high and 1.8 meters wide, even when mounted close to the wall.

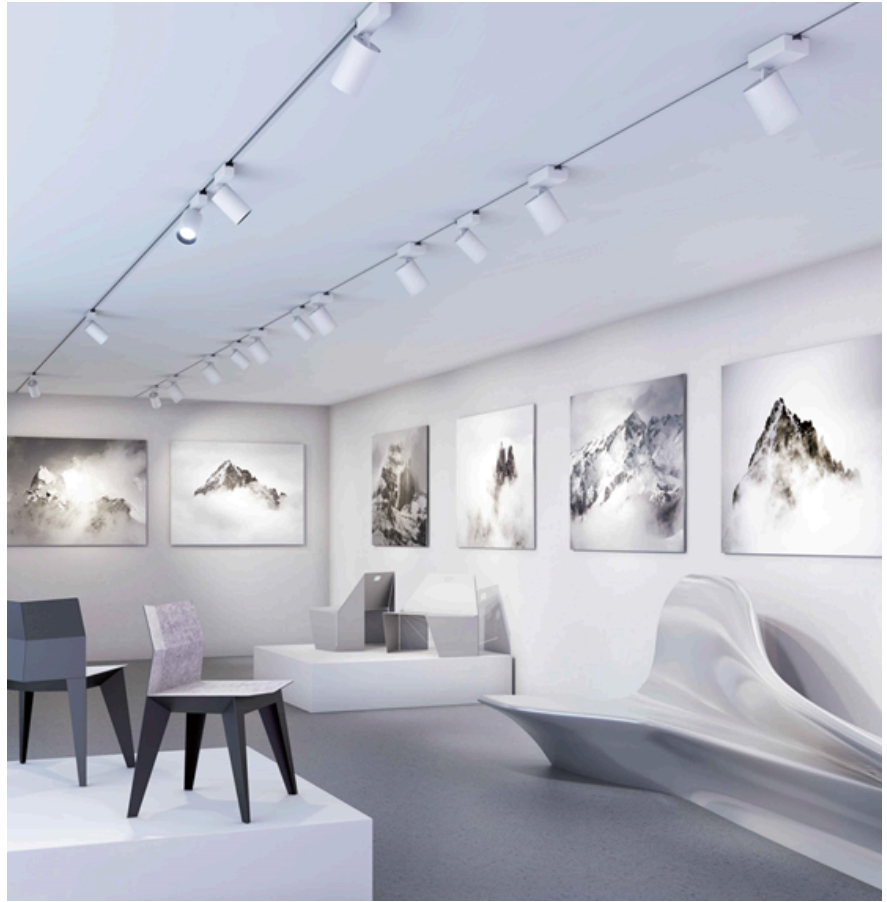


Centriq
Wallwash



Where is Centriq Wallwash best used?

With its advanced reflector technology, Centriq Wallwash is the perfect solution for wall displays in retail environments. Whether illuminating feature wall designs, artwork in galleries, or clothing displays, Centriq Wallwash delivers exceptional wallwashing performance. It also maintains the same cylinder shape of other Centriq fixtures, ensuring a cohesive design.



Magiq Hollow Wallwash

A compact wallwasher featuring eight fully-integrated reflectors mounted flush with the ceiling, providing excellent longitudinal glare control. With patented reflectors and a mirror screen, Magiq Hollow Wallwash delivers a perfect, glare-free wash of light, while almost seamlessly blending into the architecture. As the second generation of the Magiq Wallwash series, Magiq Hollow Wallwash is ideal for projects where ceiling aesthetics are paramount, with reflectors that protrude only 3mm from the ceiling. The flush design maintains a clean, ceiling-to-floor beam spread while offering minimal light reveal.

Versatile and multifunctional, Magiq Hollow Wallwash is also a popular choice for creating a ceiling-washing light effect. By mounting the fixture on the wall near the ceiling, the light spreads upward and outward for a striking yet subtle illumination. Its sleek design and concealed reflectors make it a discreet solution with excellent wallwashing capabilities.



Magiq Hollow
Wallwash





Where is Magiq Hollow Wallwash best used?

With its discreet profile and effective illumination, Magiq Hollow Wallwash is an excellent choice for a variety of application settings, including hospitality, residential spaces, and restaurants. Its nearly seamless design ensures the focus remains on the environment's key elements rather than the ceiling.



Magiq Pro

Similar to the Oiko Pro series, Magiq Pro is a sophisticated downlight system designed to set the perfect scene for architectural and interior design.

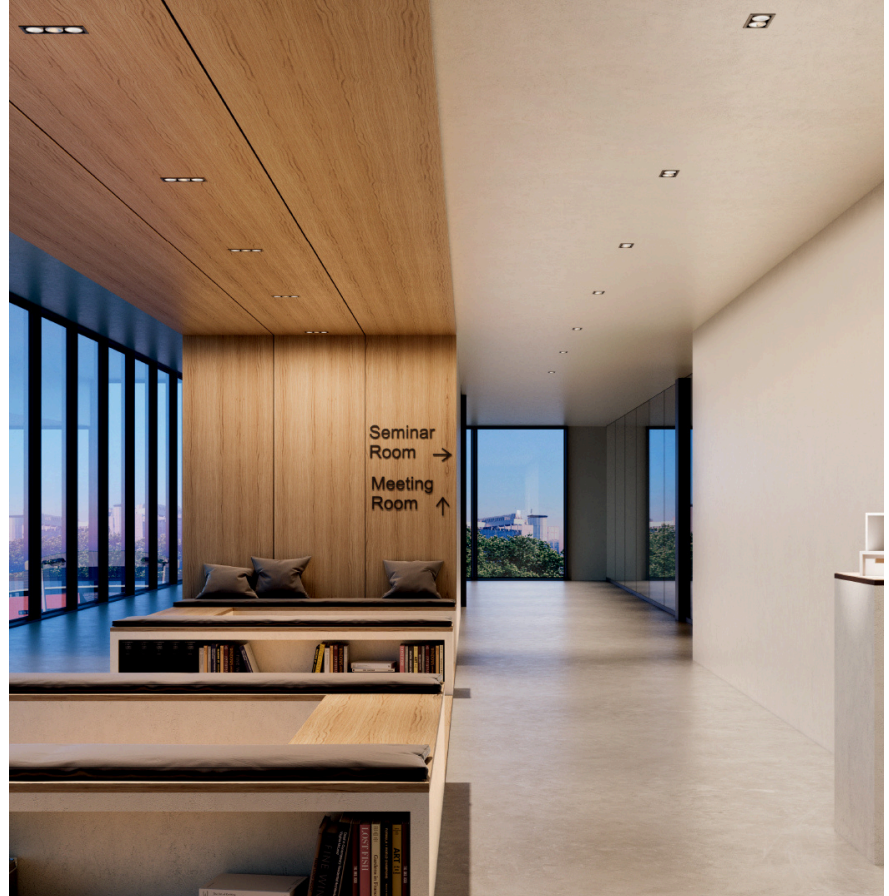
The Magiq Pro system offers the flexibility to combine multiple beam angles or wallwashers within a single fixture.

Available up to four individual cells, each cell's optics can be specified independently, allowing for a fully customized lighting solution. With 360° adjustability per cell, Magiq Pro provides precise lighting for corridors, and is particularly suited for illuminating curved walls.

While using the same high-quality reflectors as the Oiko Pro series, Magiq Pro incorporates a specialized heatsink, enabling up to 1,000 lumens per cell in a recessed, trimless format with full adjustability and rotation.



Magiq Pro



Where is Magiq Pro best used?

With its versatility and customizable features, Magiq Pro is perfectly suited for environments requiring multi-functional downlight solutions.

Magiq Pro excels specifically in commercial and hospitality settings, providing effective illumination for various points in open-concept offices, corridors, meeting rooms, and communal areas.



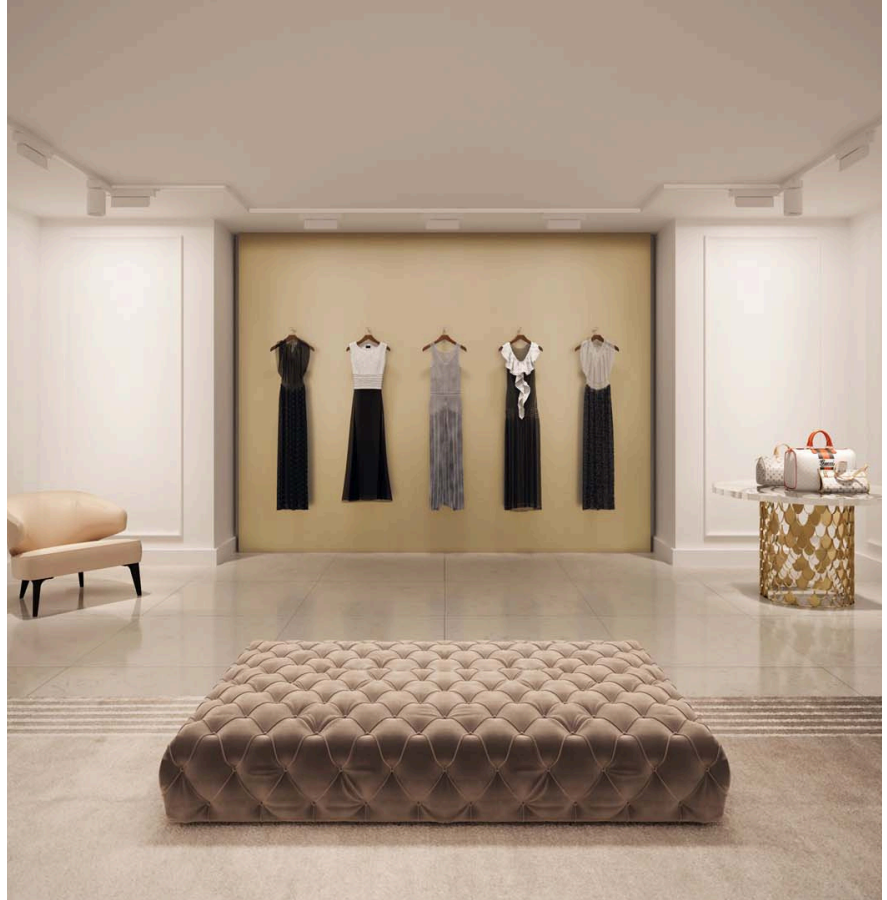
Magiq Wallwash

The Magiq Wallwash series set a new standard for advanced wallwash reflectors. Featuring five integrated reflectors, it delivers a wide, uniform field of light, ideal for spaces with high ceilings. Magiq Wallwash provides maximum output for vertical illumination, ensuring walls are evenly lit from top to bottom.

With its Vertical Boost technology, Magiq Wallwash combines five multifaceted reflectors and high-output LEDs to uniformly illuminate walls up to 4.5 meters high. The reflectors extend just 20mm from the ceiling, while a removable cover discreetly conceals them, giving the fixture a sleek, minimalist appearance.



Magiq
Wallwash



Where is Magiq Wallwash best used?

This exceptional wallwasher solution delivers precise illumination with superior visual comfort, making it an ideal choice for retail, commercial, and residential applications. Perfect for spaces with high ceilings, Magiq Wallwash's five integrated reflectors ensure a uniform field of light. It provides consistent lighting for retail and automotive showrooms, museums, art galleries, and even residential spaces.



Oiko Pro

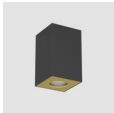
Oiko Pro is a series of downlights that combine a minimalist design with impeccable performance. Available in a selection of shapes and mounting applications, Oiko Pro features a double-function wallwash reflector that not only perfectly illuminates a vertical surface but also serves as a downlight. This innovative reflector impresses with its ability to create a clean, ceiling-to-floor light cut while remaining flush to the ceiling.

With multiple mounting options – adjustable track spot, adjustable surface spot, surface or pendant – Oiko Pro provides the range to specify the light fixture best suited for a project. Each option offering something unique, the adjustable version provides dynamic lighting capabilities, achieving seamless ceiling-to-wall light distribution from any angle or installation type.

The Wallwash reflector is available in the following products:



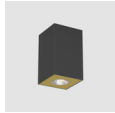
Oiko Pro
Round



Oiko Pro
Square



Oiko Pro
Square
Wallwash



Oiko Pro
Wallwash



Oiko Pro In -
Track



Oiko Pro In -
Trimless



Where is Oiko Pro best used?

Sleek and versatile, Oiko Pro achieves the look of a traditional downlight while also performing as a wallwash, blending effortlessly into the design of a space. Due to this dual-functionality, Oiko Pro is ideal for a variety of application settings that require both directional lighting and effective ambient lighting. Settings like open-concept residential environments, commercial offices, and hospitality spaces benefit from Oiko Pro's integrated downlight and wallwash capabilities.



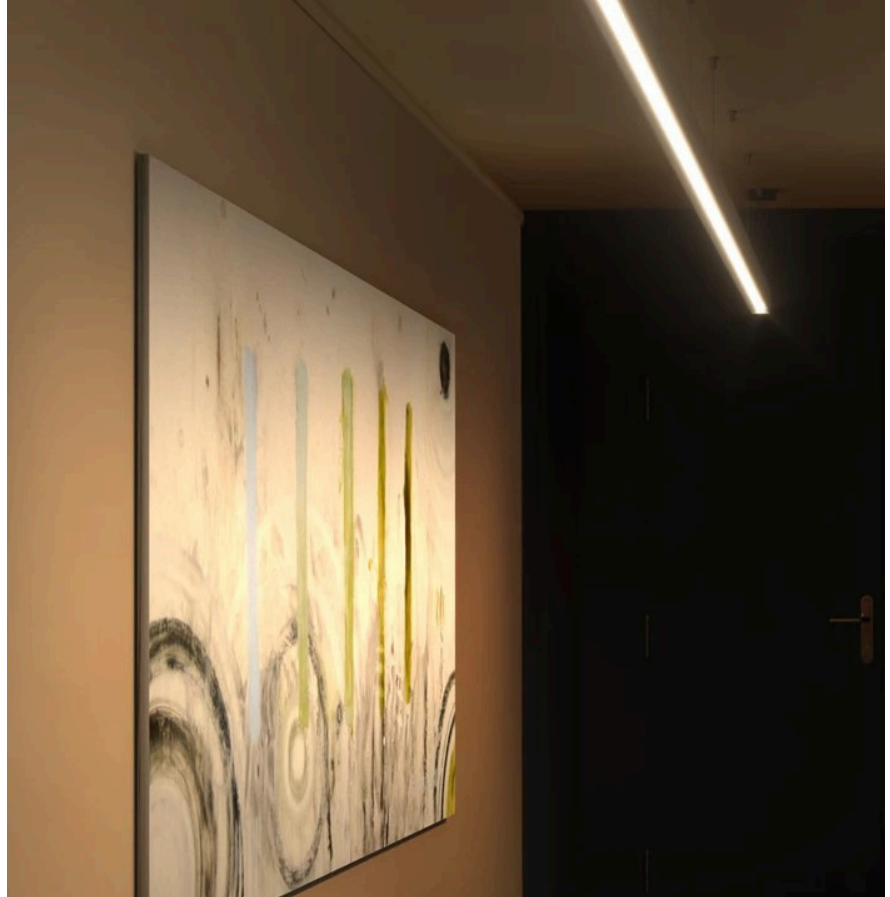
Slider Wallwash

Slider is a revolutionary lighting solution, designed to make light installation faster and easier than ever. Within the system, the Slider Wallwash optic subtly redirects the light beam to project soft, even illumination across walls.

With Slider Wallwash, you can achieve a continuous and homogeneous wallwash effect without the need for additional spotlights or elaborate installations. It provides a seamless, uniform light pattern with no interruptions or shadows, creating an impressive, evenly lit wall while directing light precisely where it's needed.



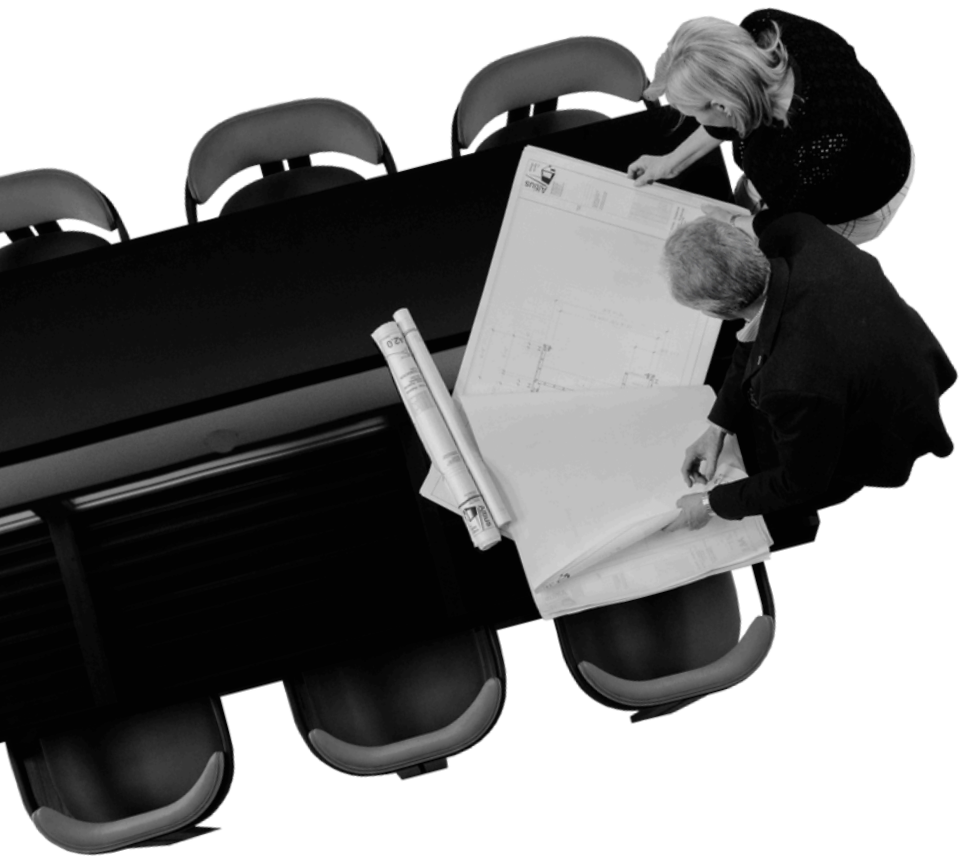
Slider



Where is Slider Wallwash best used?

One of Slider Wallwash's key benefits is its ability to deliver wallwashing within a simplified, compact profile. Measuring only 60mm wide and 76mm high, Slider's sleek design makes it the perfect choice for any settings. Its slim, minimalist aesthetic is ideal for spaces where style and space-saving are priorities. Suitable for office, commercial, or hospitality environments, Slider adds a touch of elegance where it's installed.





Expert Collaboration

Partnering with Zaneen means more than just selecting products; it's about collaborating with a team of experts dedicated to your project's success. Our team works closely with you to select the right products, light levels, and finishes tailored to your specific project.

We provide detailed lighting layouts and photometric studies, offering a clear visual representation of how the wallwash lighting will integrate into your space. By choosing Zaneen, you gain access to our extensive knowledge and resources, ensuring that your project is executed with precision and excellence.



Conclusion

Wallwashing is a powerful light technique that creates a smooth, uniform illumination across walls, minimizing shadows to give a space an enhanced, polished look. Ideal for various settings, wallwashing can transform everything from commercial spaces to residential interiors by directing attention to key design features.

Zaneen's wallwash lighting solutions combine high performance, durability, and contemporary style, delivering products designed to enhance any environment. With a range of options tailored to different applications, each wallwash fixture provides a specific solution, ensuring flexibility to meet the unique needs of every setting.

Whether you're illuminating an art gallery or creating an open, airy ambiance in a modern office, Zaneen's wallwash lighting offers unmatched versatility and aesthetic appeal.



ZANEEN

Internationally recognized North American provider of premium European lighting, offering innovative solutions across four divisions.

[Projects](#)

[Inspiration](#)

For more information, please contact Zaneen or your local representative.

zteam@zaneen.com
T 1-800-388-3382

- **ARCHITECTURAL**
Innovative solutions for precision lighting.

[Products](#)

- **DESIGN**
Extensive range of material, form and style.

[Products](#)

- **EXTERIOR**
Cutting-edge technology meets craftsmanship.

[Products](#)

- **CUSTOM**
Crafting bespoke luminaires with expertise.

[About](#)