

Just Black

Architectural



ZANEEN
ARCHITECTURAL

 PROLICHT

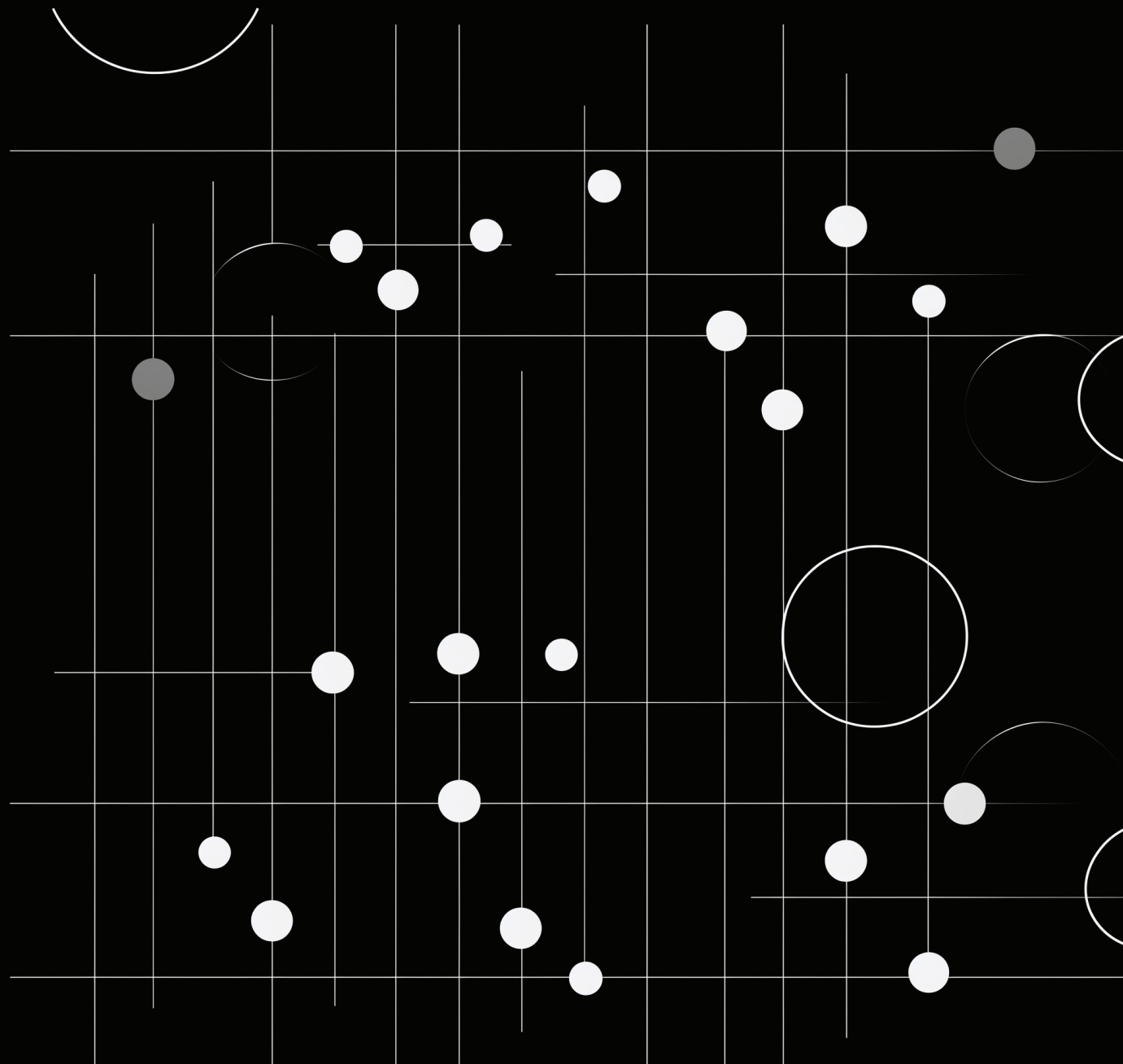
JUST BLACK

A NEW PRODUCT FAMILY

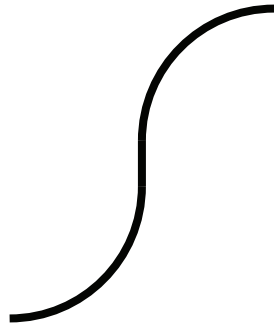
JUST BLACK stands for extremely minimalist shapes that harmonise discreetly with the interior design.

Fine lines, circles and curves are the basic elements of the new product family and allow endless combination possibilities.

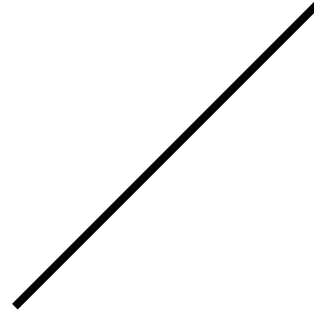
JUST BLACK consists of a hyper-miniaturised track and several individual luminaires.



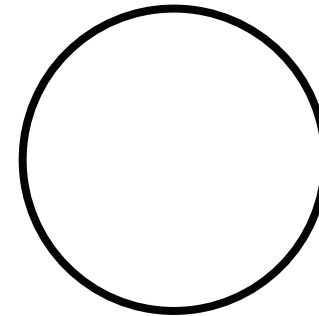
JUST BLACK
OVERVIEW



JUST BLACK TRACKS



JUST BLACK LINES

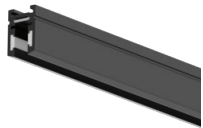


JUST BLACK HALOS



TRIMLESS

1000/2000 mm
39 3/8" / 78 3/4"



SURFACE

1000/2000 mm
39 3/8" / 78 3/4"



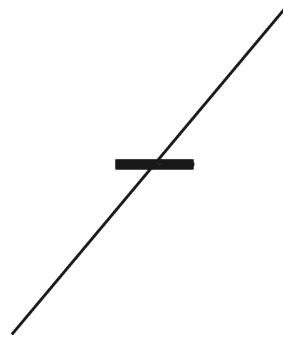
SUSPENDED

1000/2000 mm
39 3/8" / 78 3/4"



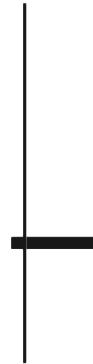
LINE
DOUBLE

1500 mm
59 1/16"



LINE
ADJUSTABLE

1200 mm
47 1/4"



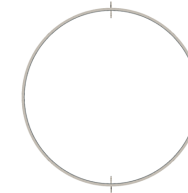
LINE

900 mm
35 7/16"



HALO Wall

400/600/800 mm
15 3/4" / 23 5/8" / 31 1/2"



HALO Insert

400/600/800 mm
15 3/4" / 23 5/8" / 31 1/2"

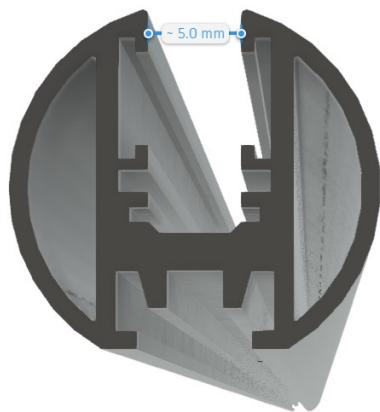
JUST BLACK TECHNOLOGY

ALL UNDER 10

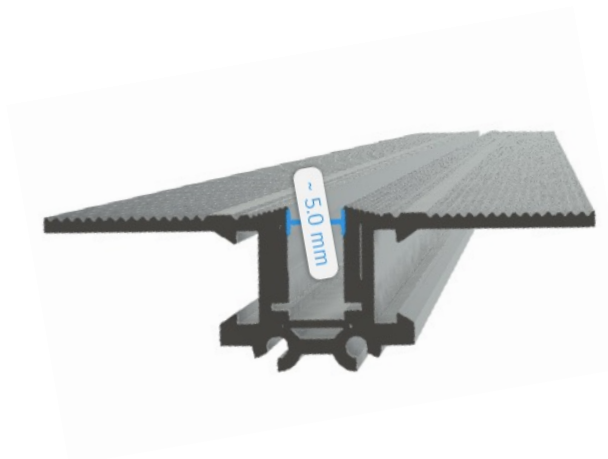
JUST BLACK TRACK
SURFACE



JUST BLACK TRACK
SUSPENDED



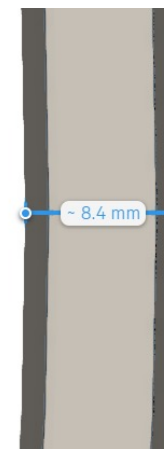
JUST BLACK TRACK
TRIMLESS



JUST BLACK LINES



JUST BLACK HALOS



JUST BLACK TRACK SYSTEM

The complete solution for minimalist and versatile lighting.

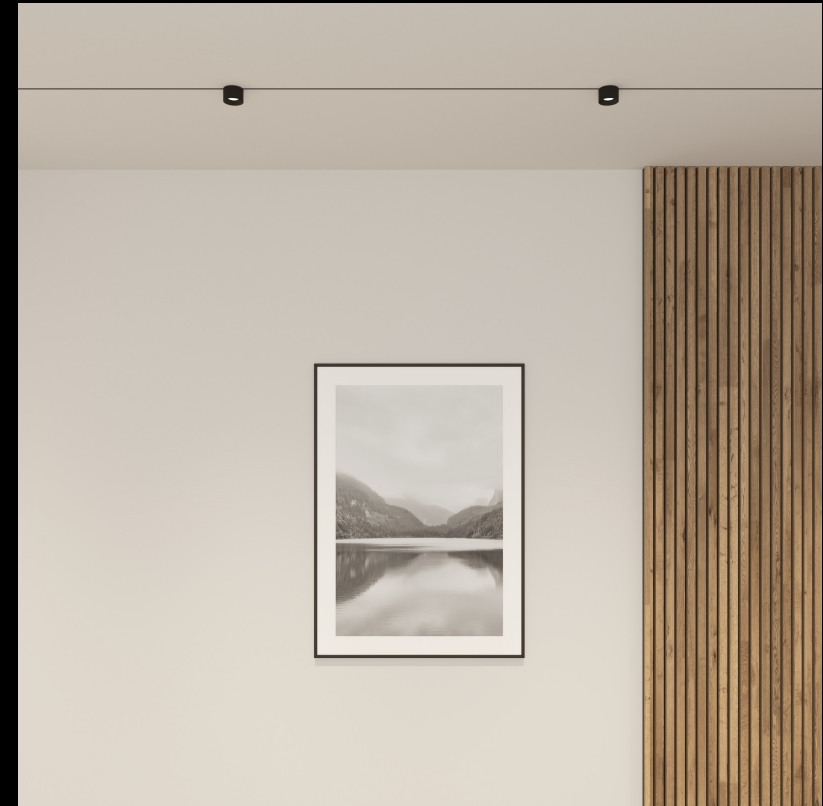
The square JUST BLACK TRACK surface-mounted track enables elegant and dynamic lines that alternate seamlessly between straight and curved segments. It changes direction flexibly, whether on the same level or at the transition between wall and ceiling.

The JUST BLACK TRACK pendant track has a cylindrical aesthetic that emphasises the light inserts and, thanks to the rounded L-connectors, enables changes of direction as the track progresses.

The JUST BLACK TRACK recessed track blends almost seamlessly into the wall and ensures a visually flawless and maximally concealed appearance.



JUST BLACK TRACK
HYPERMINIATURISED



JUST BLACK TRACK

OVERVIEW COMPONENTS



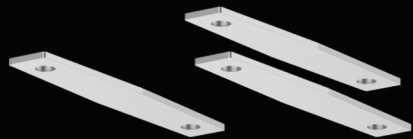
SURFACE TRACK
1000mm/ 2000mm
39 3/8" / 78 3/4"



TRIMLESS TRACK
1000mm/ 2000mm
39 3/8" / 78 3/4"



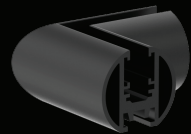
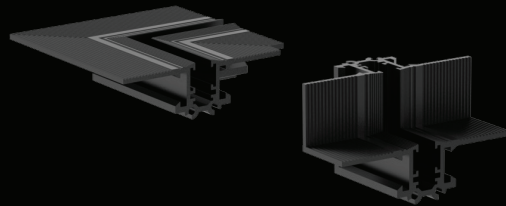
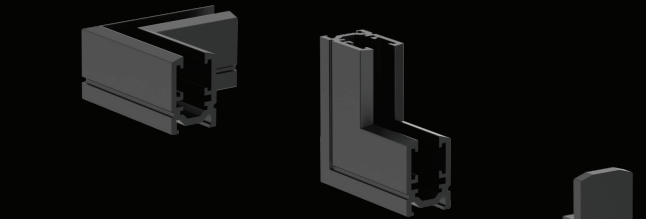
PENDANT TRACK
1000mm/ 2000mm
39 3/8" / 78 3/4"



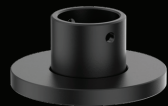
MECH. CONNECTOR



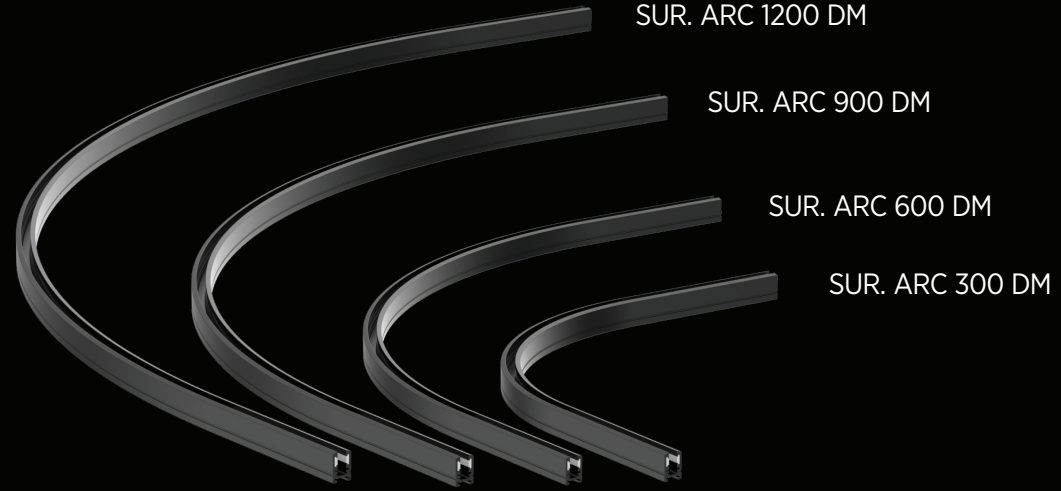
SUSPENSION



CONNECTOR
BASE



WALL
CONNECTOR



SUR. ARC 1200 DM

SUR. ARC 900 DM

SUR. ARC 600 DM

SUR. ARC 300 DM

FEED UNIT 2500



FLEX. CONNECTOR



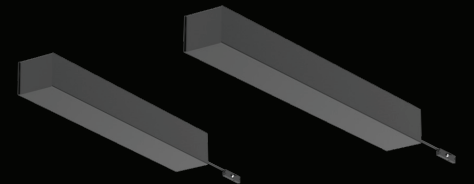
LINEAR CONNECTOR



24V 60W

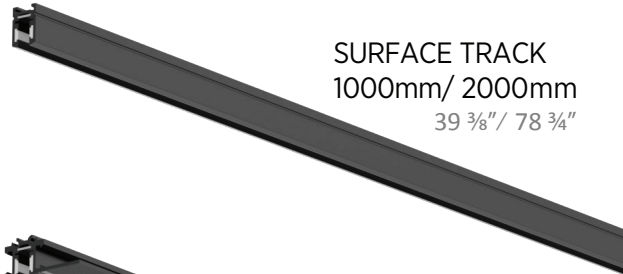


24V 100W



JUST BLACK TRACK

TRACKS



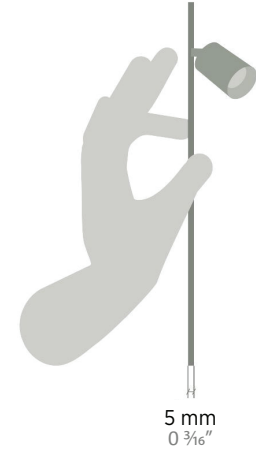
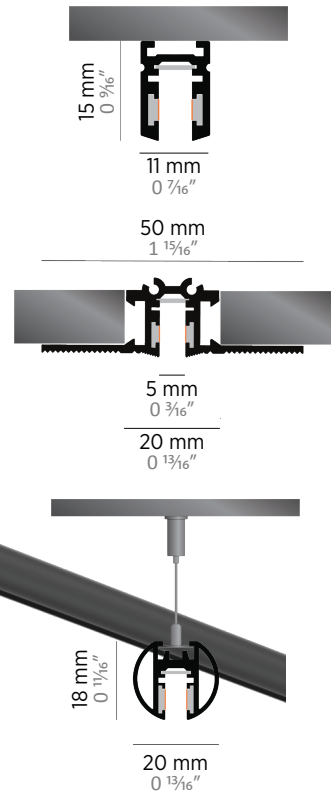
SURFACE TRACK
1000mm/ 2000mm
39 3/8" / 78 3/4"



TRIMLESS TRACK
1000mm/ 2000mm
39 3/8" / 78 3/4"



PENDANT TRACK
1000mm/ 2000mm
39 3/8" / 78 3/4"

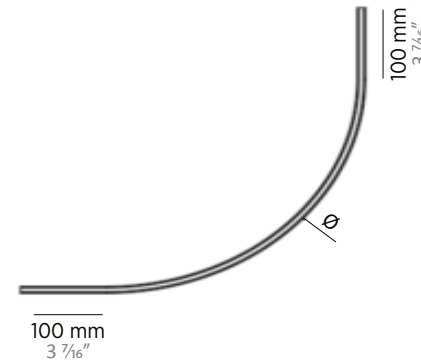
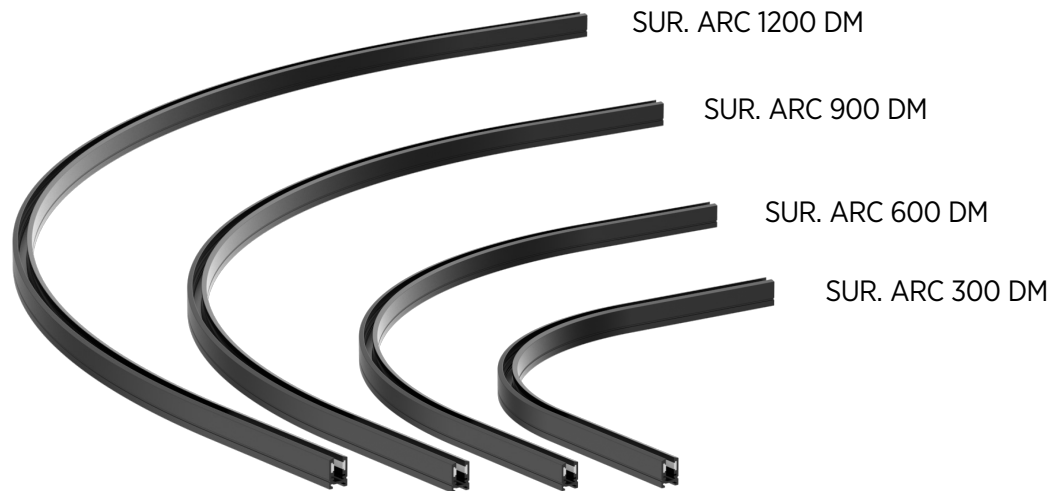


The track segments have notches at one end to allow the feed to be channeled away more easily.

In addition, all rails already have holes so that no drilling is necessary during installation.

JUST BLACK TRACK

ARCS



The curves have a 100 mm straight end piece on both sides. This is necessary so that the linear connectors can be placed in a straight rail segment.

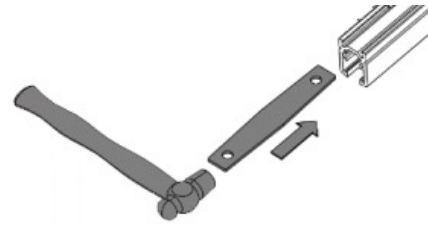
Theoretically, it is possible to place light inserts in the two largest bends. However, this is not actually intended.

The FLEXLINE light insert can be placed in curves.

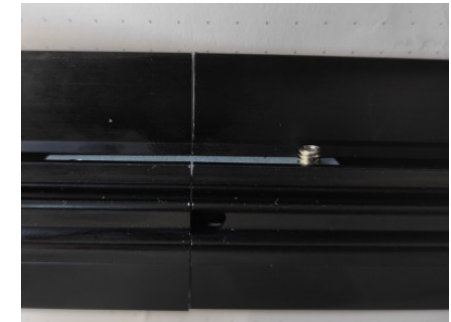
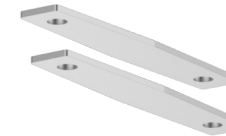
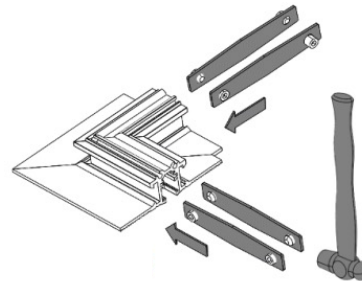
JUST BLACK TRACK

MECHANICAL CONNECTORS

The suspended track round and attachment rail are connected with a mechanical connecting plate 350-2729 per connection point.



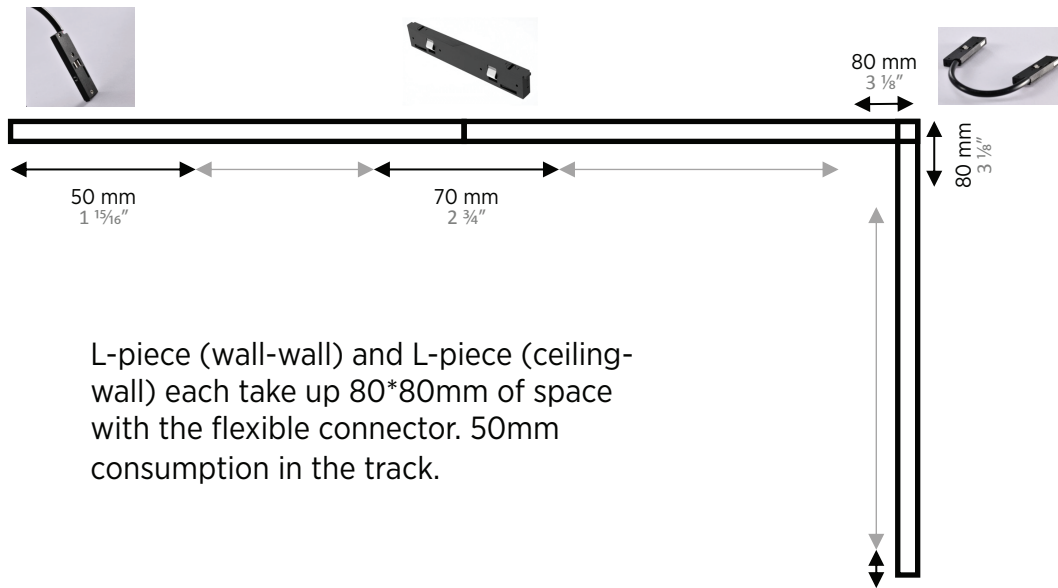
This plate comes with grub screws. The installation rail is connected with the mechanical connecting plates 140-1415 (set of 2) per connection point. These plates also come with grub screws.



JUST BLACK TRACK

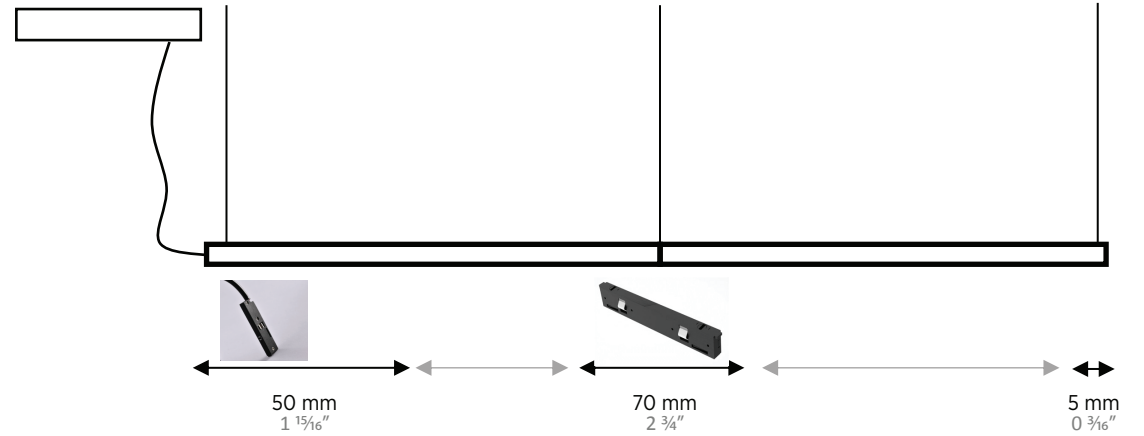
SPACE CONSUMPTION

TRIMLESS und SURFACE



L-piece (wall-wall) and L-piece (ceiling-wall) each take up 80*80mm of space with the flexible connector. 50mm consumption in the track.

PENDANT



There is also an L piece for the suspended round track. This also takes up 50*50mm of space with the flexible connector.

JUST BLACK TRACK SUSPENSION



440-1656



440-1656



440-1656

Can only be positioned to the right or left of the mechanical connector.



250mm- 1000mm
9 3/16" - 39 3/8"



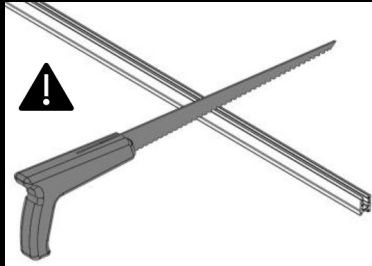
1000mm- 2000mm
39 3/8" - 78 3/4"



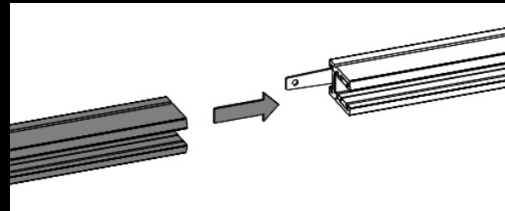
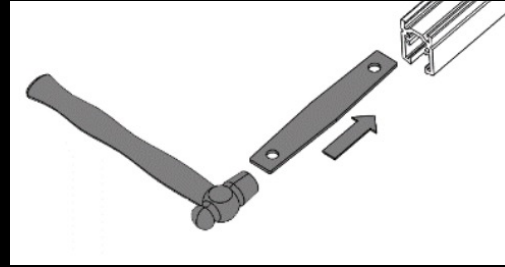
- ! can be suspended from 0-2m depth
- ! Each track segment has two suspensions
- ! two suspensions are also sufficient for a 2m track section
- ! one suspension is sufficient at the connection of two tracks

JUST BLACK TRACK INSTALLATION

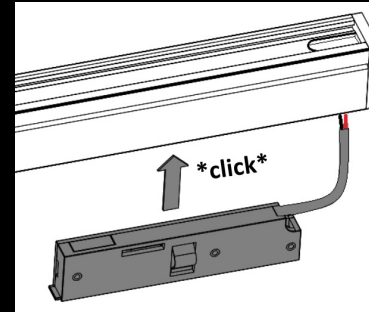
Rails can be cut to length if required



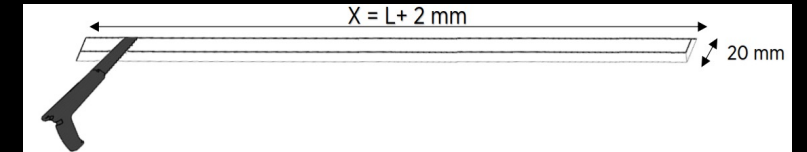
Mechanical connectors are hammered in with a rubber mallet.



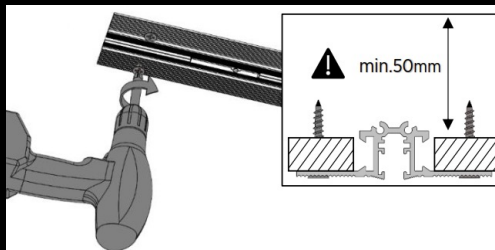
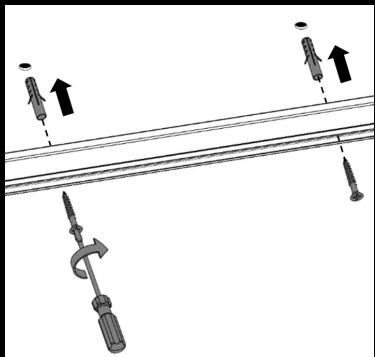
The power feed is clicked in and a notch in the track guides the cable to the end.



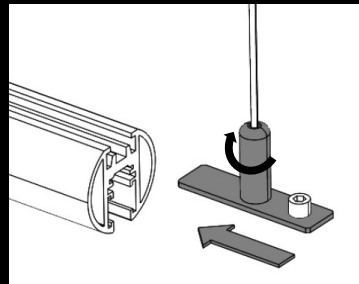
20mm cutout for recessed track and foam cover for easy plastering.



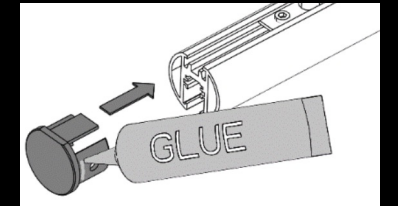
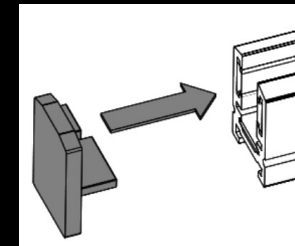
Track has mounting holes and is supplied with screws. These must be used as they have an extremely flat screw head.



The suspension bracket of the suspended track is inserted from the side



End caps are plugged in. For round rails, additionally glued to ensure a better hold.

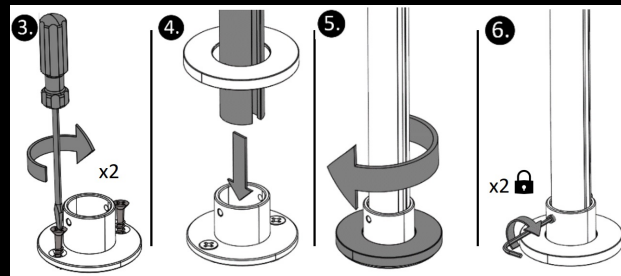
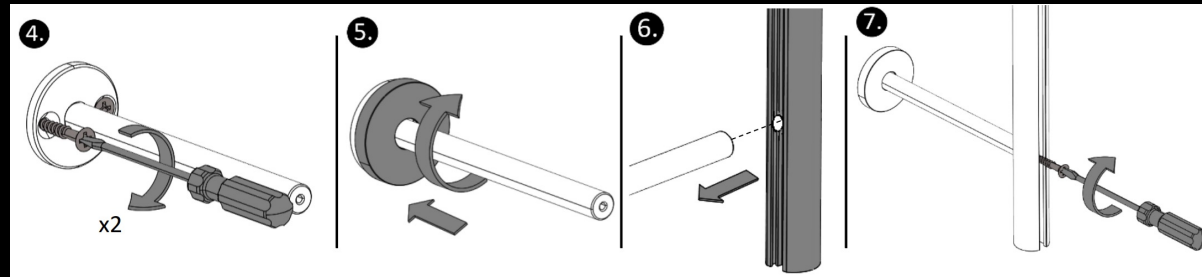
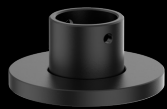


JUST BLACK TRACK INSTALLATION

The round suspended track can also be set up as a POLE system.



x2



x2

x2



JUST BLACK TRACK OVERVIEW INSERTS

JUST BLACK TRACK offers a wide range of inserts for all lighting requirements.



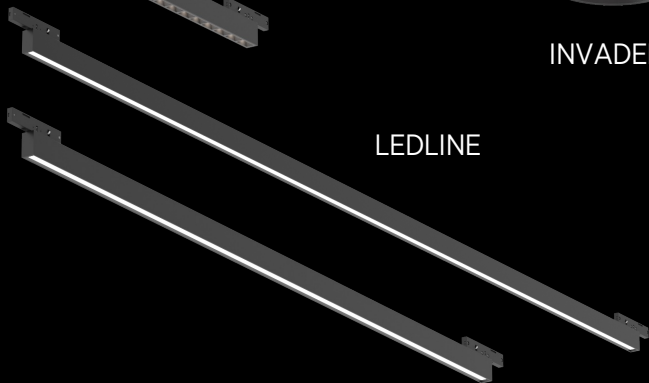
IMAGINE



MAGIQ



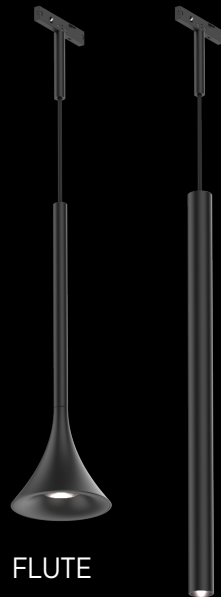
INVADER



LEDLINE

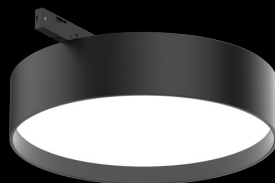


BILO



FLUTE

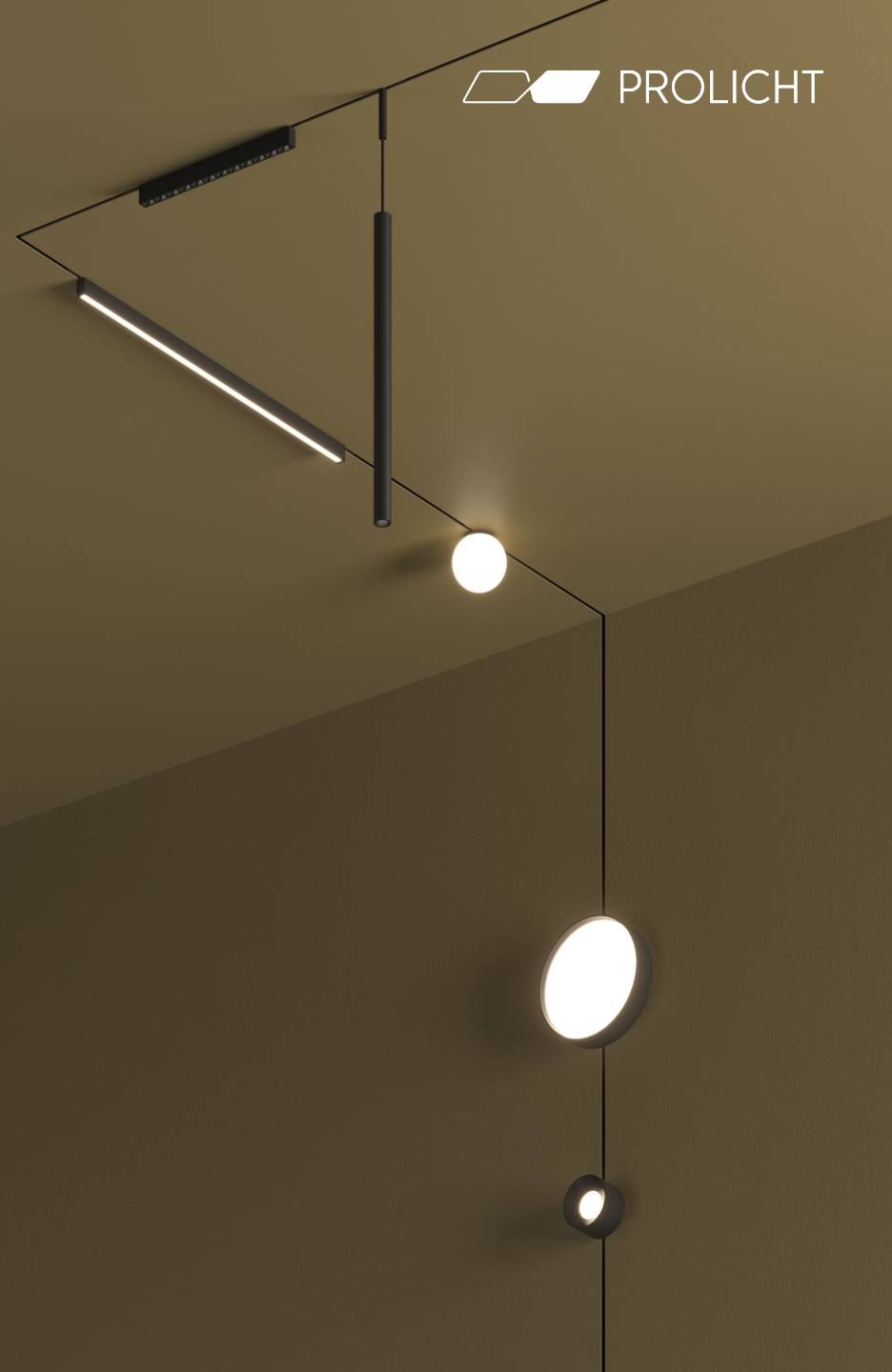
HANGOVER



SIGN

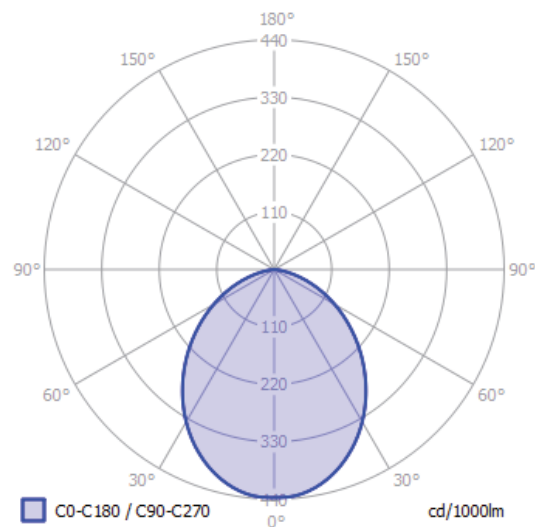


FLEXLINE



JUST BLACK TRACK

SIGN INSERT

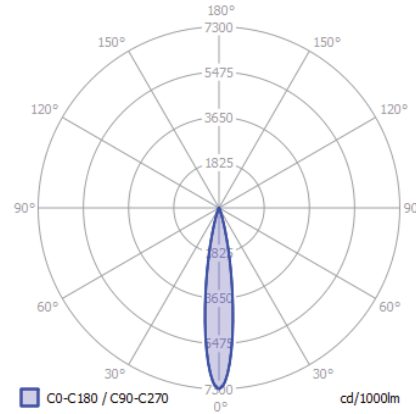


Dimensions:	Ø138mm x 34mm (5 7/16" X 1 5/16")
lm output:	407 lm
power cons.:	13.8 W
CCT:	3000 K
CRI:	95

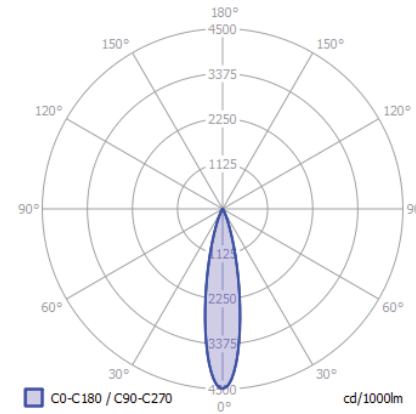
JUST BLACK TRACK
IMAGINE INSERT



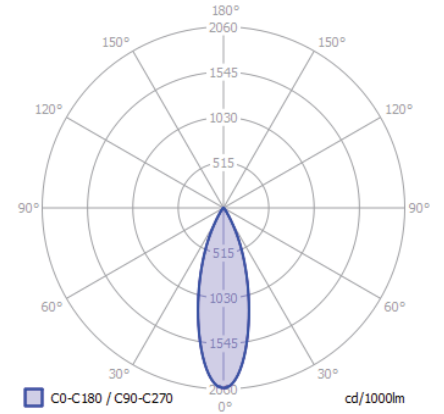
15* Lens



24* Lens



36* Lens



Dimensions:

Ø25mm x 48mm
(1" x 1 7/8")

Ø35mm x 58/83mm
(1 3/8" x 2 5/16" / 3 1/4")

Ø45mm x 63mm
(1 3/4" x 2 1/2")

Beamangle:

15* / 24* / 36*

15* / 24* / 36*

15* / 24* / 36*

lm output:

138 lm

365lm

492lm

power cons.:

2.4 W

5.0 W

7.9 W

CCT:

3000 K

3000 K

3000 K

CRI:

89

94

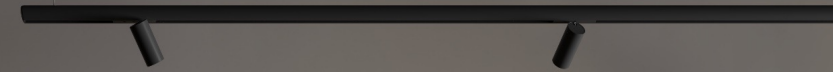
94

JUST BLACK TRACK IMAGINE

- All three models are available with three different beam angles
- INFO: 25mm model is in the light colour 2700K
- Magnetic and mechanical locking

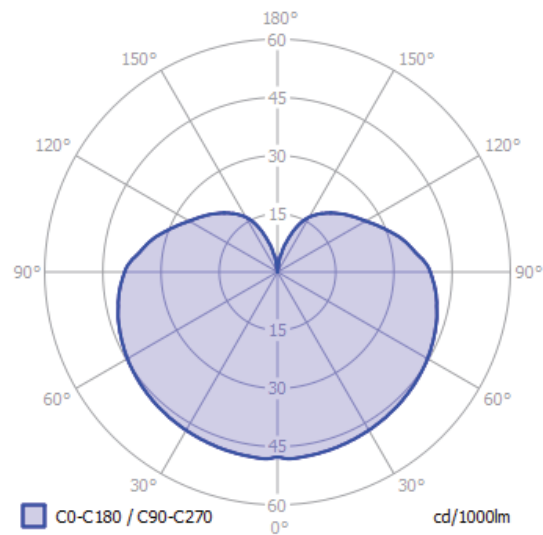


15°
25°
36°



JUST BLACK TRACK

BILO INSERT



Dimensions: Ø60mm (2 3/8")

lm output: 200 lm

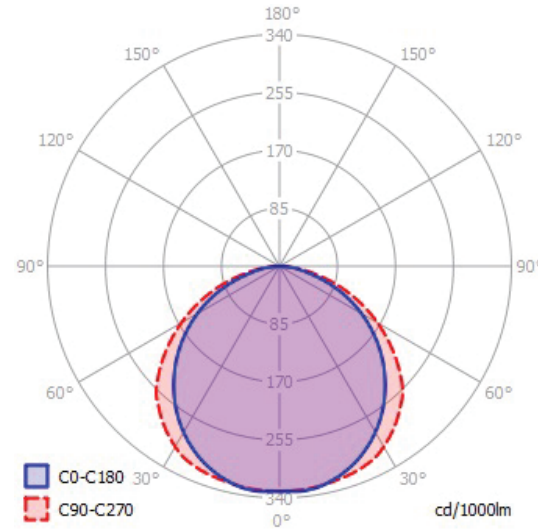
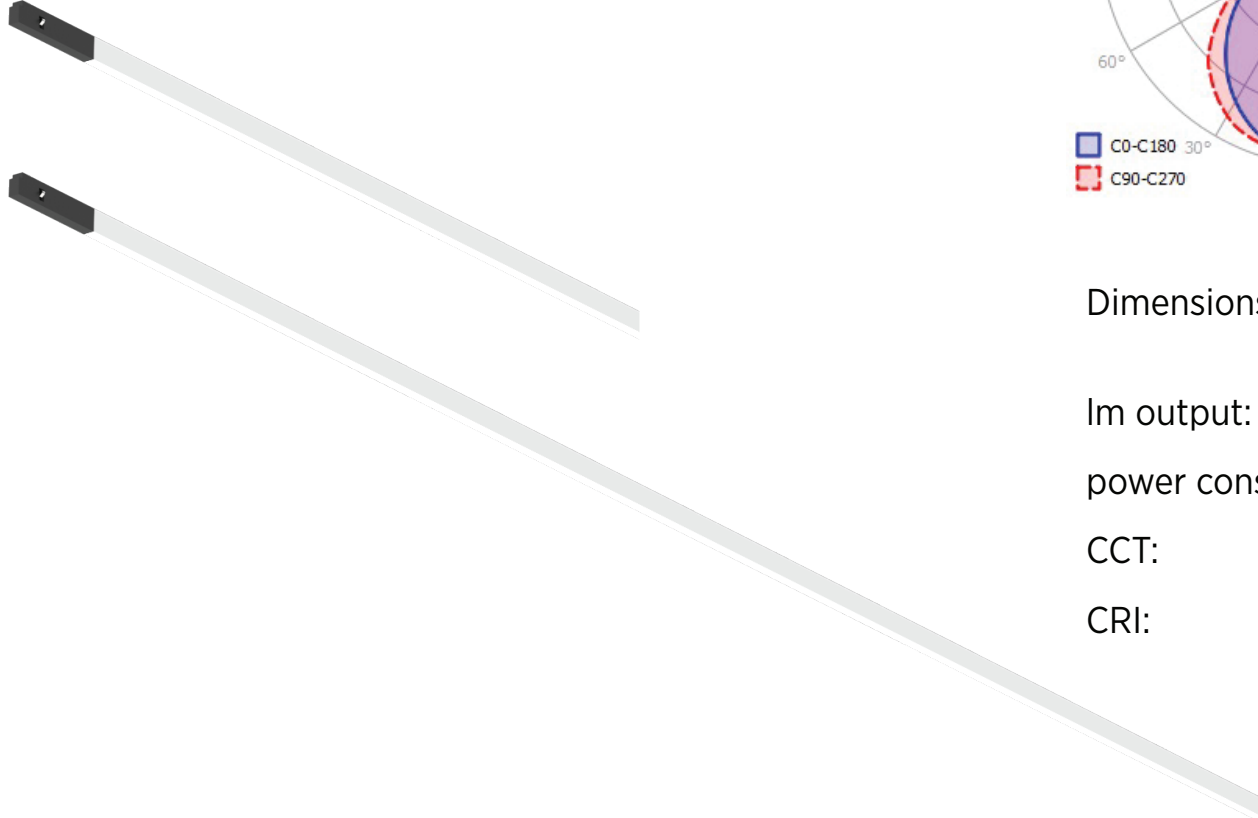
power cons.: 2.9 W

CCT: 3000 K

CRI: 92

JUST BLACK TRACK

FLEXLINE INSERT

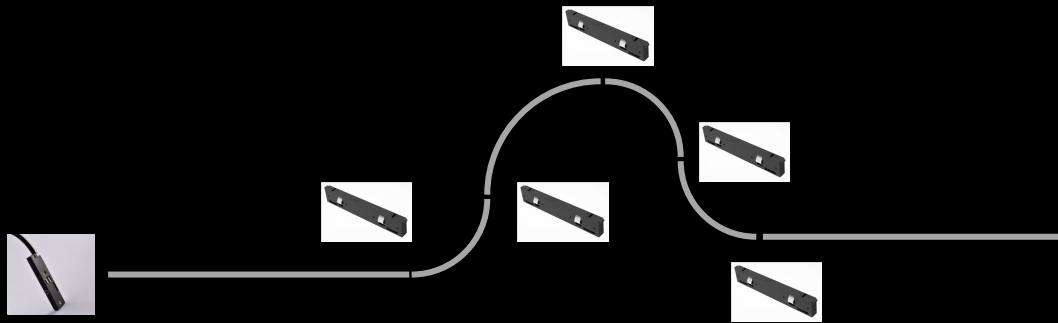


Dimensions:	890x5x10mm (35 1/16" X 0 3/16" X 0 3/8")	1890x5x10mm (74 7/16" X 0 3/16" X 0 3/8")
lm output:	142	300 lm
power cons.:	8 W	13.2 W
CCT:	2700 K	2700 K
CRI:	95	95

JUST BLACK TRACK FLEXLINE

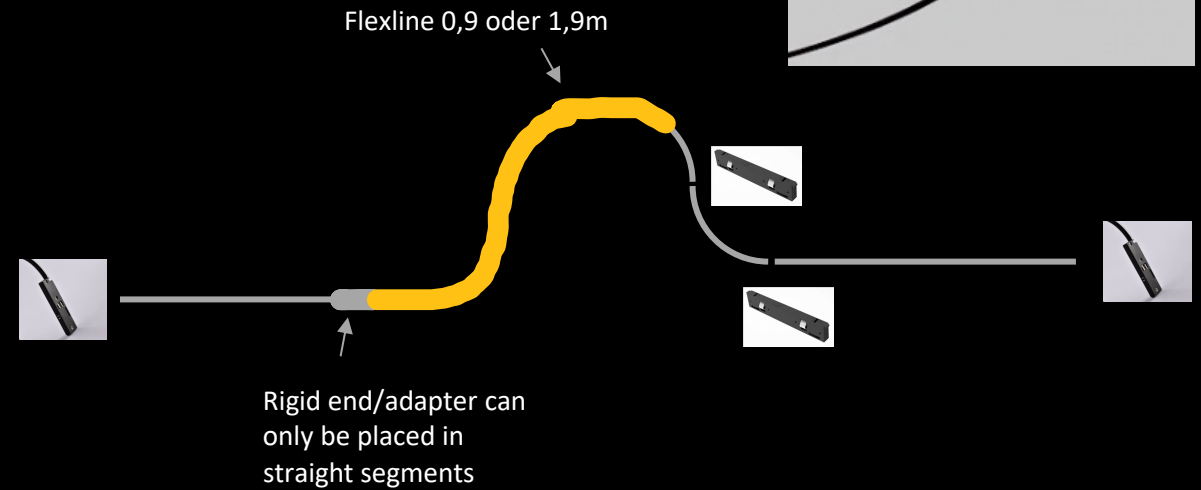
Before placing the Flexline:

- One power feed
- Power is routed across the entire track thanks to the linear connector



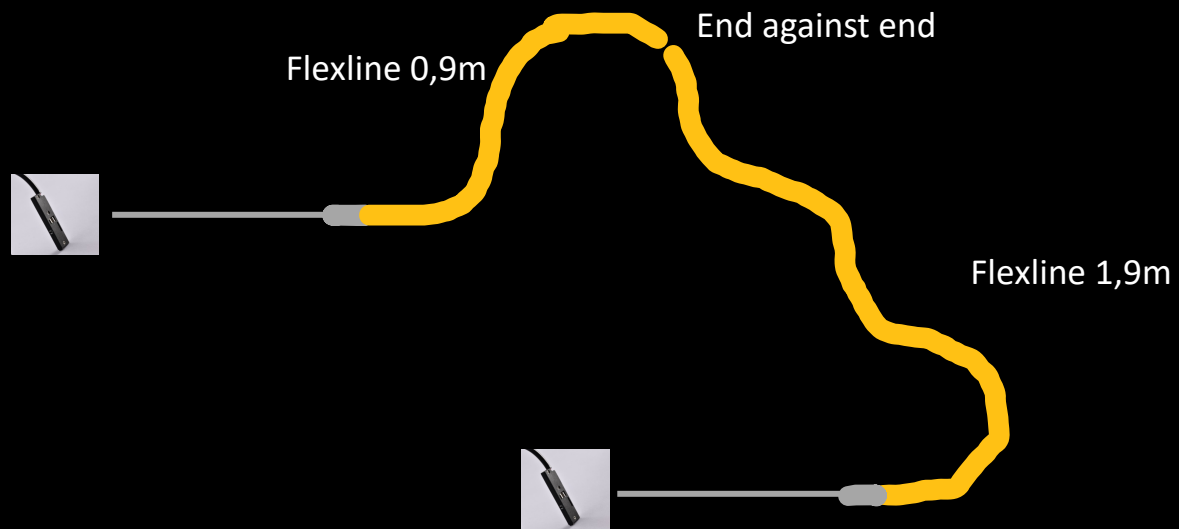
After positioning the Flexline:

- A new power feed is necessary as the Flexline prevents the linear connectors from being placed
- In addition, the rigid part of the Flexline can only be placed in straight segments
- Curved segments each have 100m straight pieces at the beginning and end



JUST BLACK TRACK FLEXLINE

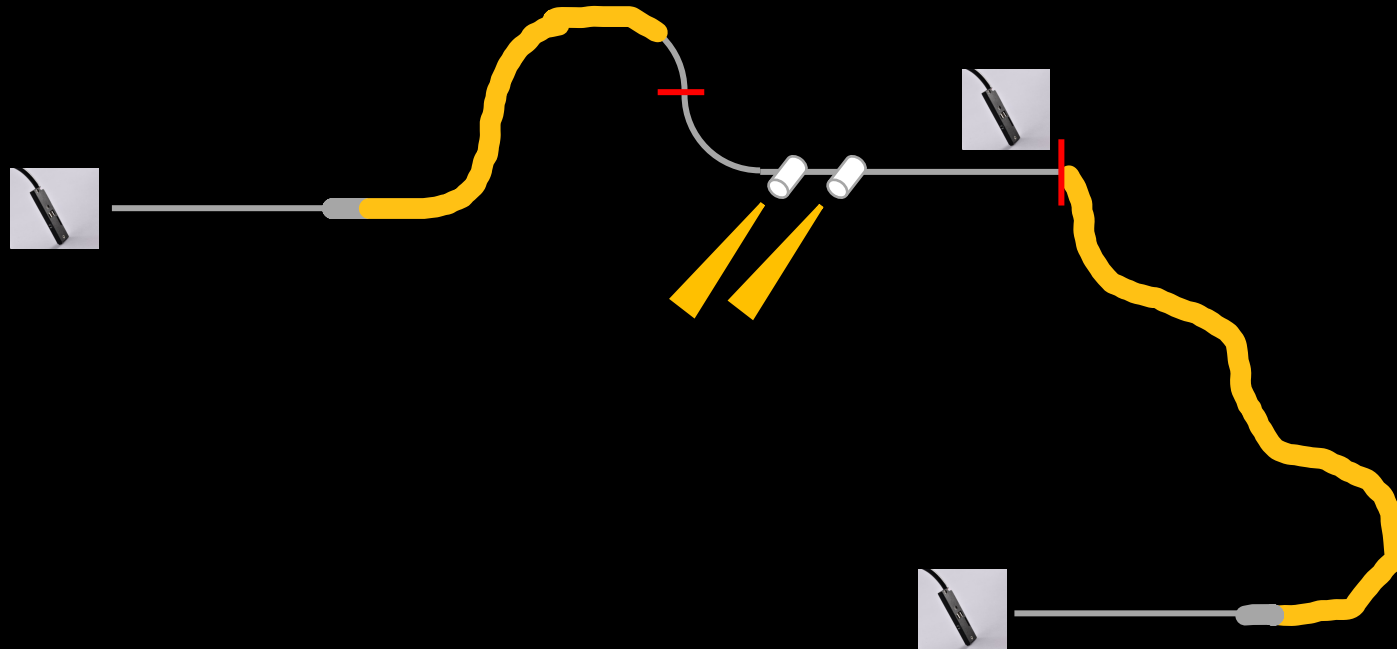
Placing the flexlines in opposite directions enables continuous illuminated lines of 2*0.9m or 2*1.9m or 0.9m+1.9m...



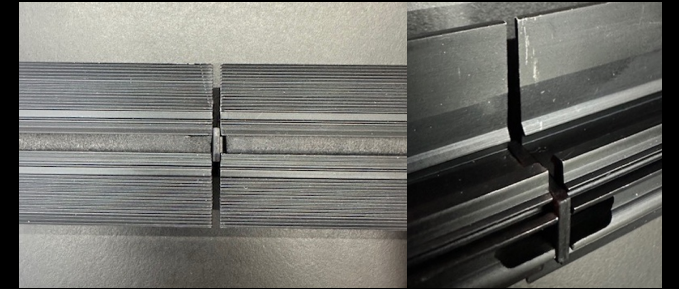
JUST BLACK TRACK FLEXLINE

Galvanic isolation for multiple feeds:

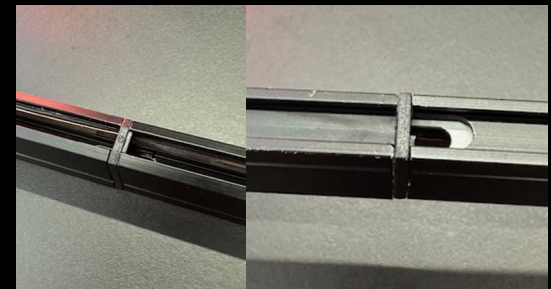
- clear separation via plastic end cap for surface and recessed track



Einbau

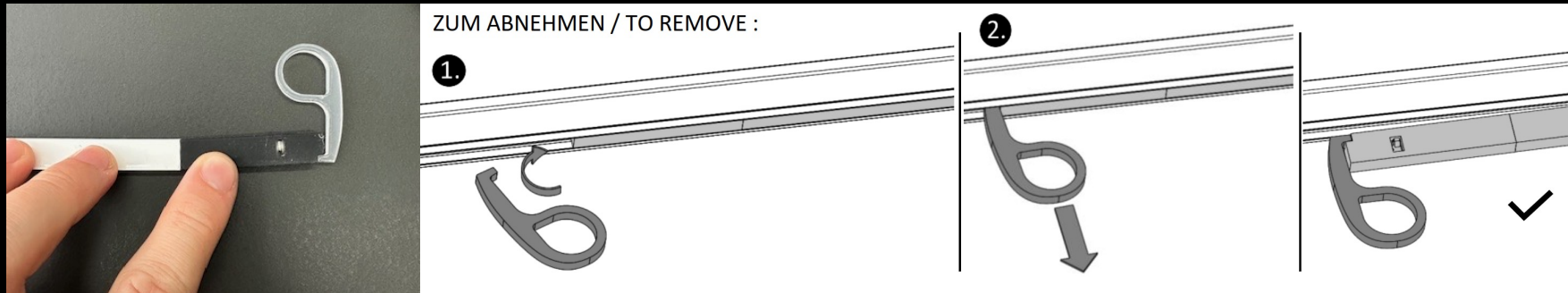


Anbau



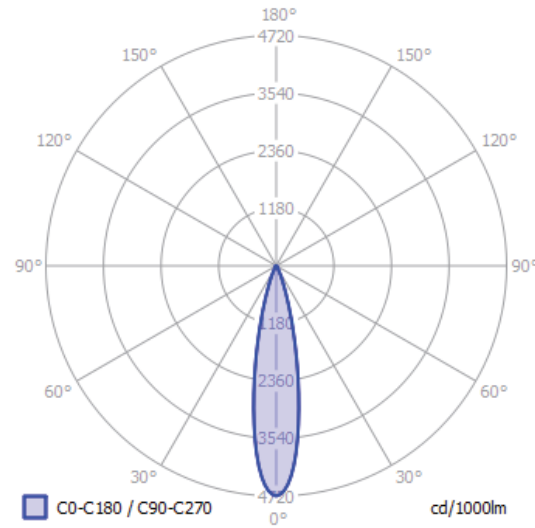
JUST BLACK TRACK FLEXLINE

When removing the FLEXLINE, it is essential to use the tool supplied to prevent damage to the contacts.



JUST BLACK TRACK

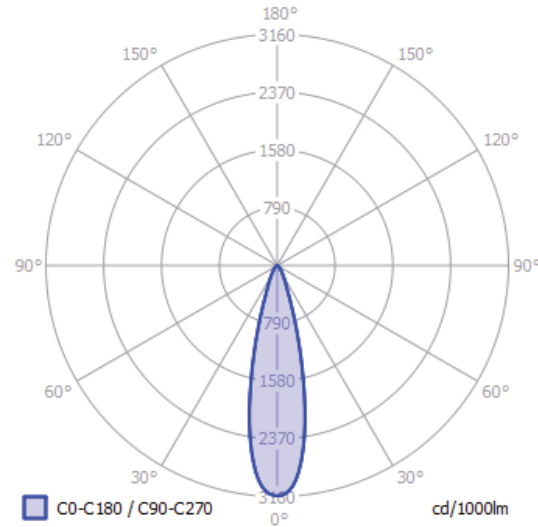
HANGOVER INSERT



Dimensions:	Ø18mm x 300mm (0 11/16" X 11 13/16")
Beamangle:	24*
lm output:	168 lm
power cons.:	2.4 W
CCT:	3000 K
CRI:	89

JUST BLACK TRACK

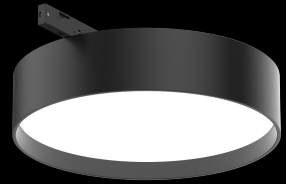
FLUTE INSERT



Dimensions:	Ø70mm x 225mm (2 ¾" X 8 ⅞")
Beamangle:	24*
lm output:	407 lm
power cons.:	5.0 W
CCT:	3000 K
CRI:	94

JUST BLACK TRACK OVERVIEW INSERTS

JUST BLACK TRACK offers a wide range of inserts for all lighting requirements.



SIGN



IMAGINE



INVADER



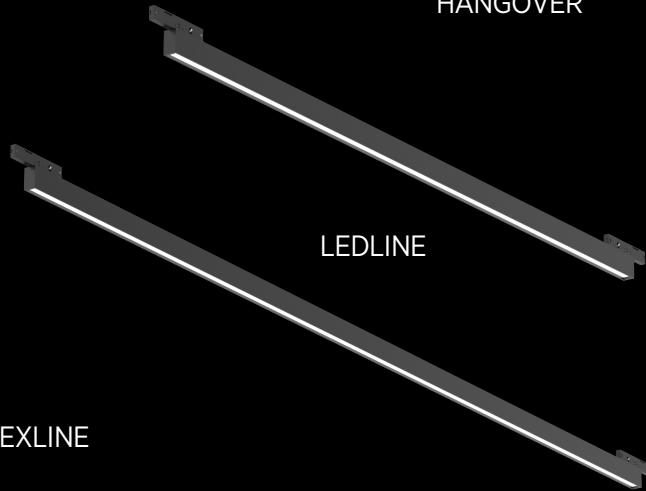
BILO



MAGIQ



HANGOVER



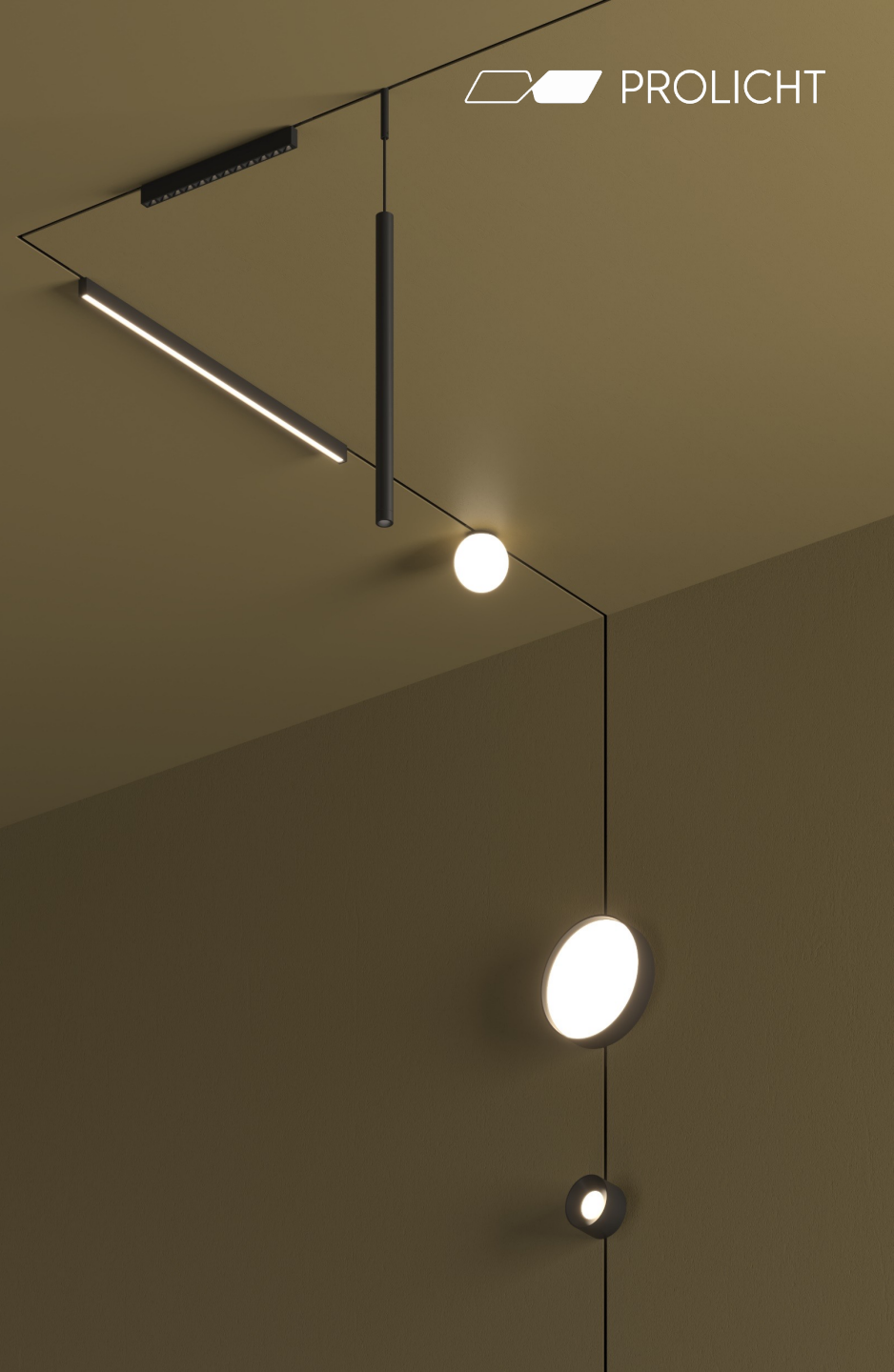
LEDLINE



FLUTE



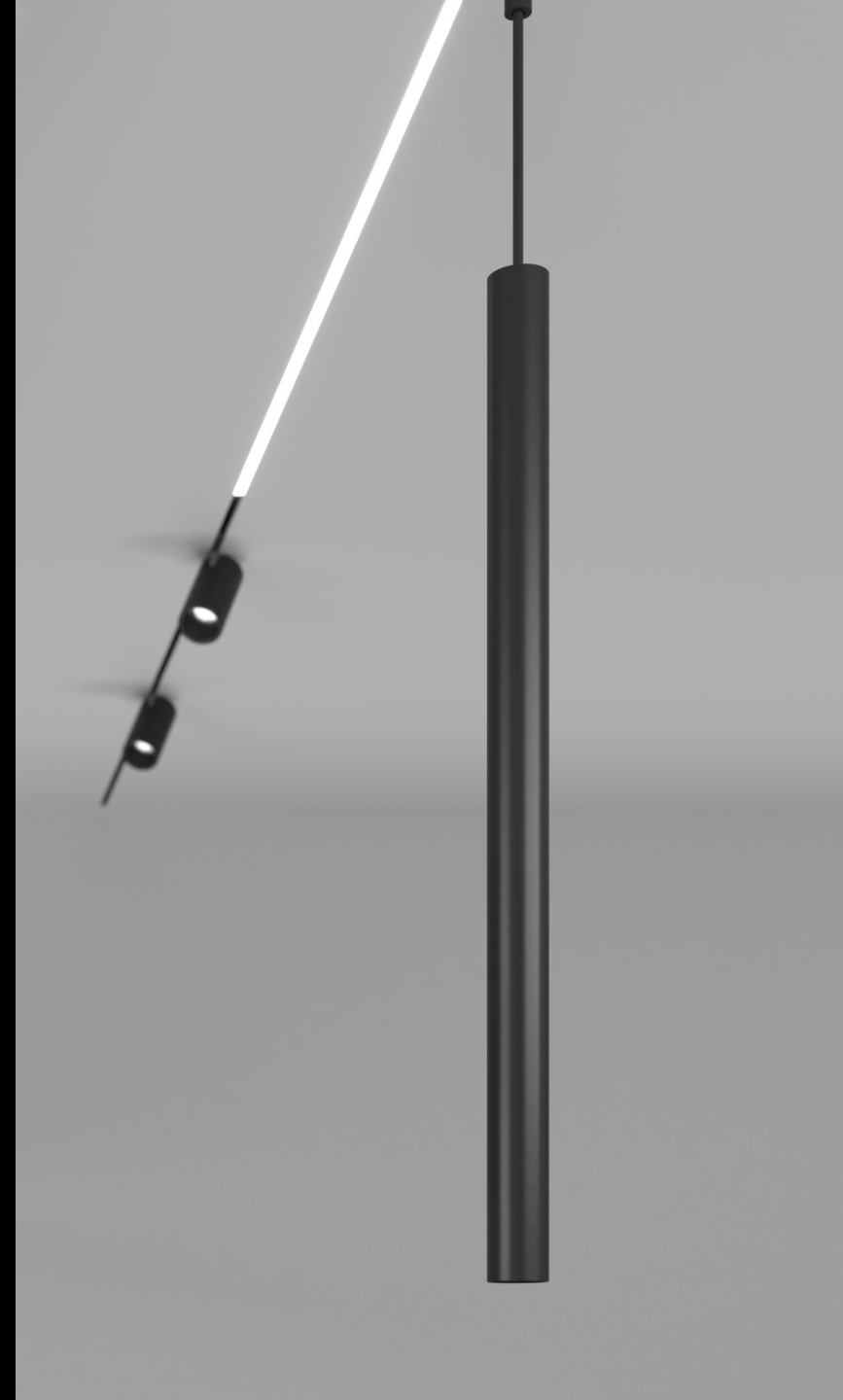
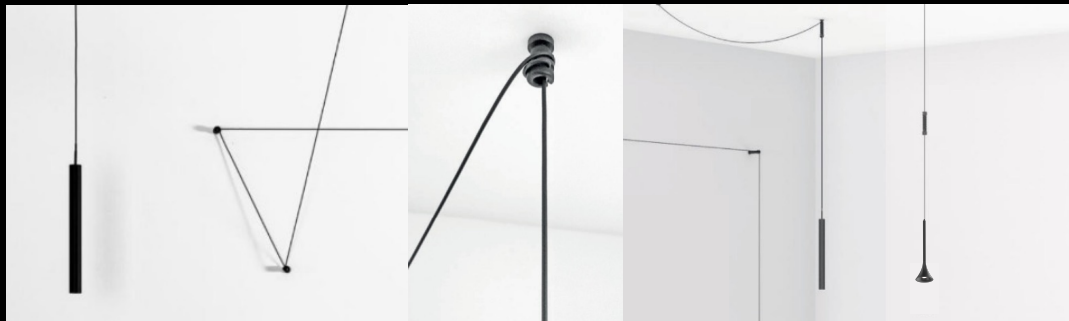
FLEXLINE



JUST BLACK TRACK

HANGOVER and FLUTE

- Cable length is fixed at 1.1m and cannot be adjusted
- Cable components are used to adjust the height

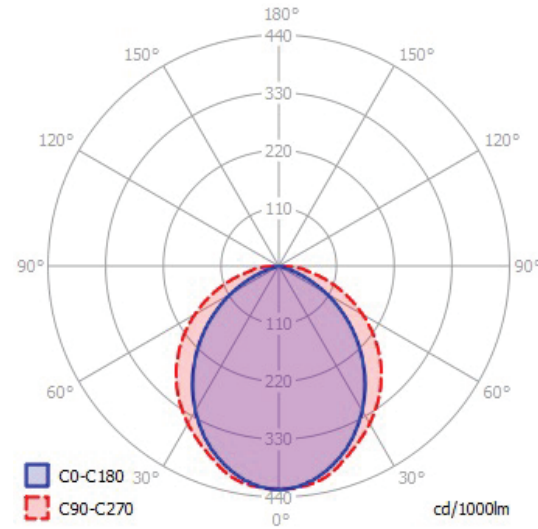
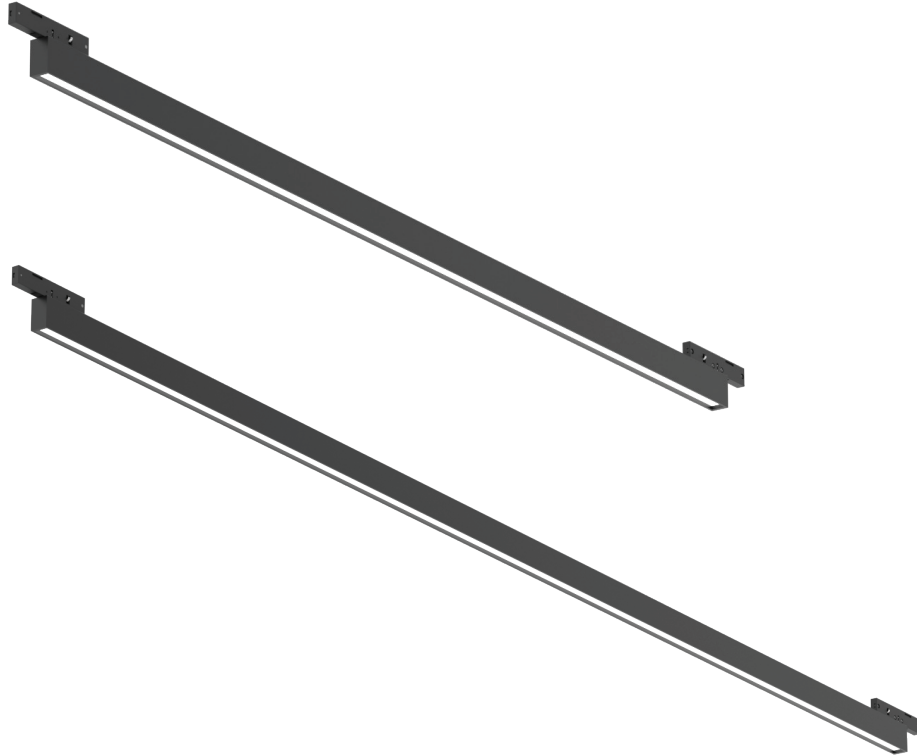


JUST BLACK TRACK
HANGOVER and FLUTE



JUST BLACK TRACK

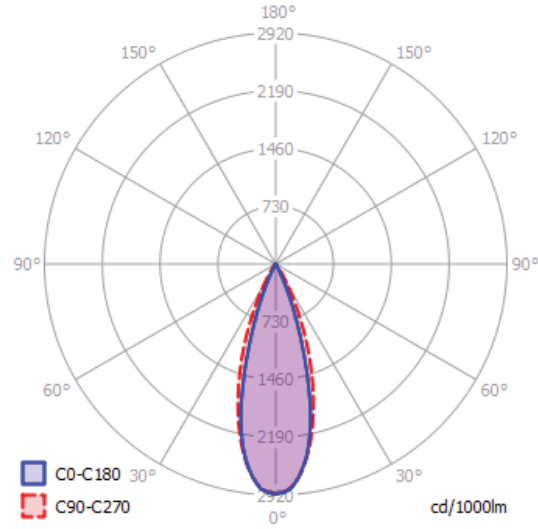
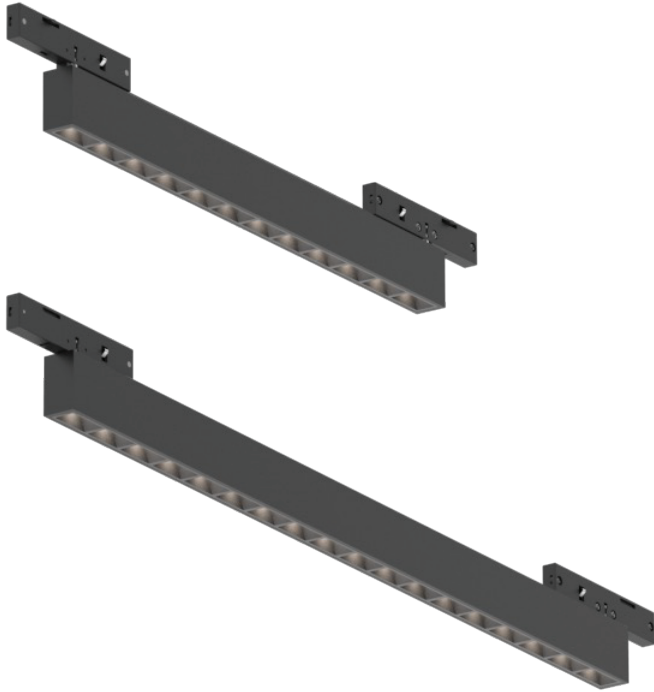
LEDLINE INSERTS



Dimensions:	600x10x18mm (23 5/8" X 0 3/16" X 0 1/16")	900x10x18mm (35 7/16" X 0 3/16" X 0 1/16")
lm output:	600 lm	900 lm
power cons.:	13.2 W	19.8 W
CCT:	3000 K	3000 K
CRI:	90	90

JUST BLACK TRACK

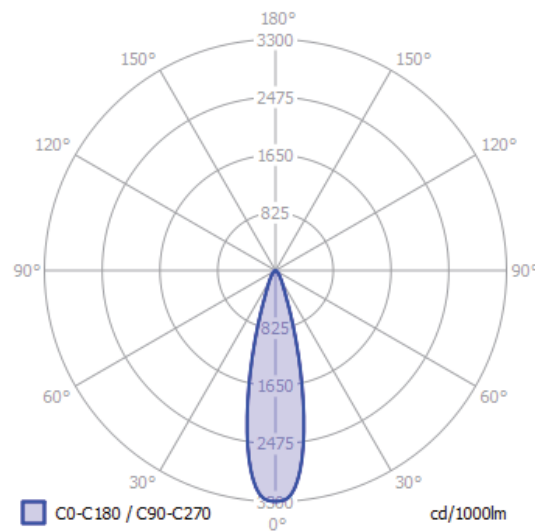
MAGIQ INSERTS



Dimensions:	196x10x18mm (7 1/16" X 0 3/16" X 0 1/16")	292x10x18mm (11 1/2" X 0 3/16" X 0 1/16")
lm output:	420 lm	633 lm
power cons.:	8.4 W	13.8 W
CCT:	3000 K	3000 K
CRI:	90	90

JUST BLACK TRACK

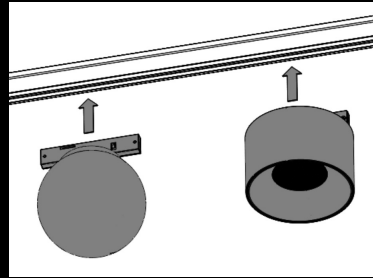
INVADER INSERT



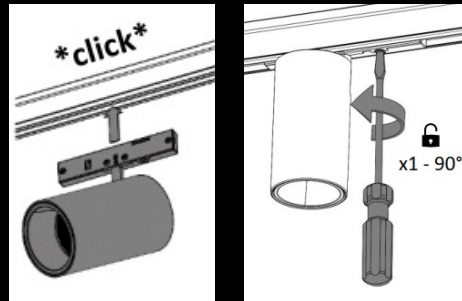
Dimensions:	Ø60mm x 43mm (2 3/8" X 1 1/16")
lm output:	411 lm
power cons.:	4.8 W
CCT:	3000 K
CRI:	94

JUST BLACK TRACK INVADER

Some inserts are only fixed magnetically



Most inserts are also mechanically locked.



JUST BLACK TRACK
LIMITATIONS

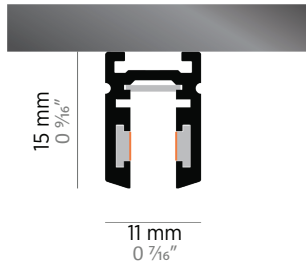
MAX 10m length

MAX 100W system power

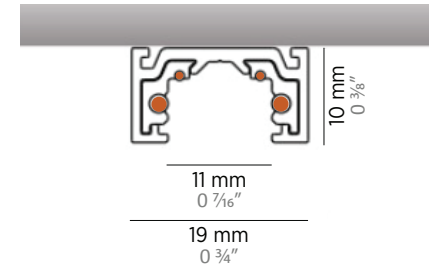
MAX 6A rated current

JUST BLACK TRACK

JUST BLACK TRACK vs. MINIMAL TRACK



JUST BLACK TRACK	MINIMAL TRACK
24V	48V
2 Phase	2 Phase + 2 DALI Phase
on/off, DALI, matter	on/off, DALI, matter, 0-10V converter
Broadcast Dimming	Inserts can be dimmed individually
Hyperminiaturised (5mm)	Miniaturised (19mm)
Max. 10 Meter and 100 Watt	Max. 30 Meter and 100 Watt
Black	All colors possible
L connectors + Pole System	X, T, L connectors
Hospitality, Residential, Retail	Hospitality, Residential, Retail
Max. 10 Meter and 100 Watt	Max. 30 Meter and 100 Watt
Trimless, surface mounted & suspended	Trimless, surface mounted & suspended



JUST BLACK TRACK

USPs and COMPETITORS

USPs of JUST BLACK TRACK compared to the competition

- very large variety of light inserts
- In addition to surface and recessed track, a round suspended track is also available
- Components and track for Pole System
- Control via Matter possible
- Bends available for the surface track.
- FLEXLINE insert for continuously illuminated light lines

JUST BLACK LINES WALL LIGHTS

Every shape starts with a line. The line is not only an element of design, but also the essence of its creation. It is the beginning, the starting point from which every form and every type of design unfolds. In the world of design, the line is a powerful tool that combines creativity and expressiveness. It is the starting point of every journey, the first step on the way to a masterpiece. Be inspired by the versatility and beauty of lines and discover the infinite possibilities they offer.

Discover our JUST BLACK LINES.

Linear, clear and precise, like an architect's plan that forms the basis for an impressive building and at the same time delicate and filigree, like a fine pencil stroke that brings a sketch to life.

Our JUST BLACK LINES can intertwine and connect to form complex patterns and textures that enchant the eye.

 PROLICHT



JUST BLACK LINES



JUST BLACK LINES

WALL LIGHTS

LINE ADJUSTABLE



LINE DOUBLE



LINE

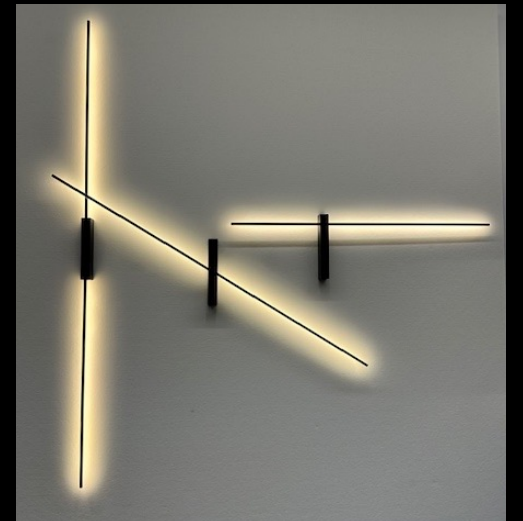
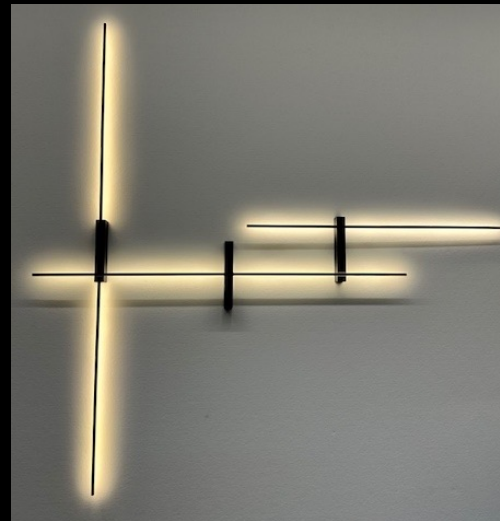
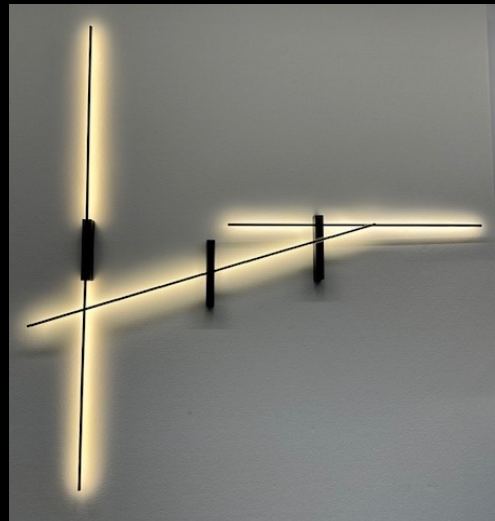
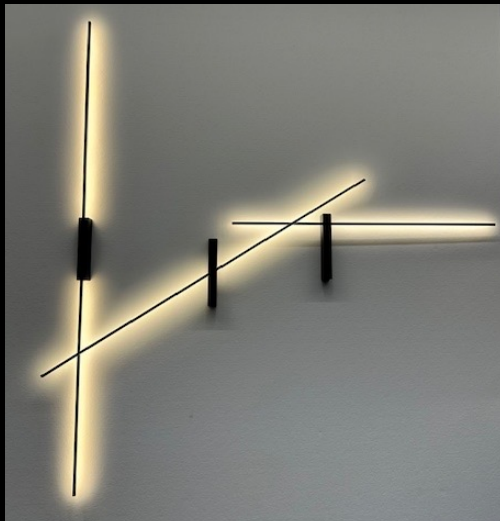


Dimensions:	1200mm x 8mm x 8mm (47 1/4" x 0 5/16" x 0 5/16")	1500mm x 8mm x 8mm (59 1/16" x 0 5/16" x 0 5/16")	900mm x 8mm x 8mm (35 7/16" x 0 5/16" x 0 5/16")
lm output:	736 lm	776 lm	535 lm
power cons.:	14.5W	15.3 W	10.6 W
CCT:	3000 K	3000 K	3000 K
CRI:	80	80	80
Dimming:	on/off, DALI, TouchDim	on/off, DALI, TouchDim	on/off, DALI, TouchDim

JUST BLACK LINES WALL LIGHTS

Only 3 luminaires but endless combinations.

The LINE ADJUSTABLE has a slightly greater distance from the wall so that it can be positioned in front of the other two LINE models without any problems. This makes overlapping lines of light possible. This and the fact that the LINE ADJUSTABLE can be rotated allow for versatile lighting arrangements.



JUST BLACK HALOS

WALL AND PENDANT LIGHTS

A closed line with perfect curves! Discover the timeless elegance of the circle - the perfect geometric shape that combines beauty and harmony. With its seamless, symmetrical design, the circle is a symbol of perfection and infinity. Experience the fascinating world of the circle and be inspired by its timeless beauty!

Discover our JUST BLACK HALOS.

Clear, harmonious and perfect, like a sunset embracing the horizon and at the same time dynamic and lively, like the endless rotation of tyres on the asphalt.

Our JUST BLACK HALOS can combine and complement each other to create stunning patterns and designs that mesmerise the eye.

COMING SOON –
SUMMER 2024



JUST BLACK HALOS

COMING SOON –
SUMMER 2024



JUST BLACK HALOS

WALL AND PENDANT LIGHTS

**HALO track insert für
JUST BLACK TRACK**



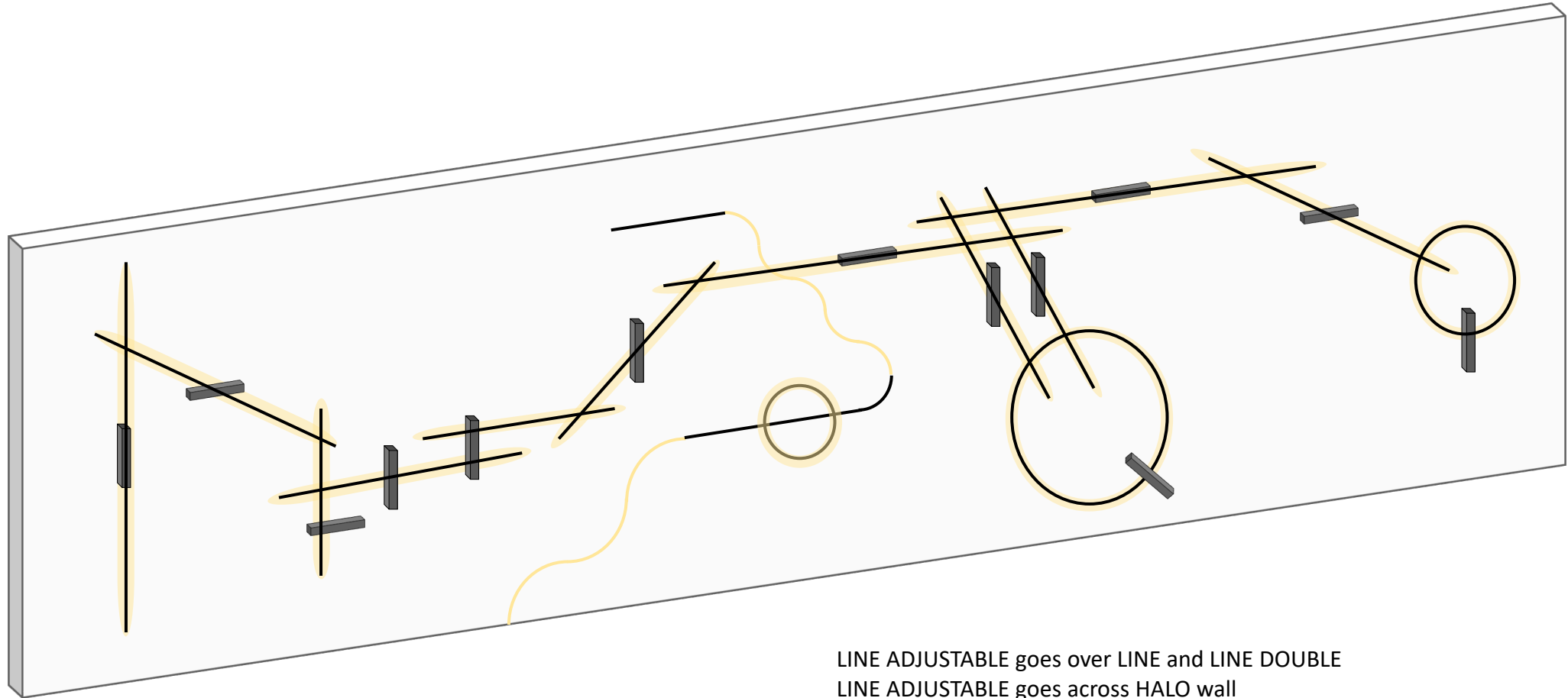
HALO Wall



Dimensions:	DM 400/600/800mm (15 3/4"/23 5/8"/31 1/2")	DM 400/600/800mm (15 3/4"/23 5/8"/31 1/2")
lm output:	tdf	/669lm/
power cons.:	tdf	/12W/
CCT:	3000 K	3000 K
CRI:	tdf	tdf
Dimming:	without driver	on/off, DALI, TouchDim

JUST BLACK

ENDLESS POSSIBILITIES



LINE ADJUSTABLE goes over LINE and LINE DOUBLE

LINE ADJUSTABLE goes across HALO wall

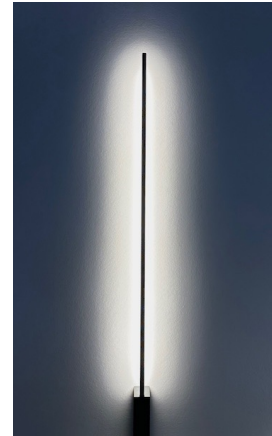
All LINES go over JUST BLACK SURFACE TRACK + HALO INSERT

JUST BLACK LINES und HALOS

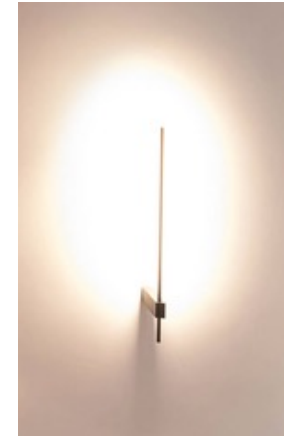
USPs and COMPETITORS

USPs of LINES and HALOS compared to the competition

- Small distance to the wall ensures that the shape is still perfectly visible in the light image. (clear light line compared to oval light line)
- Overlapping mounting enables a high degree of planning creativity and large, complex combinations
- Large perimeters and lengths are ideal for project business



VS



ZANEEN

This product catalog has been provided by Zaneen.
Contact your local representative, zteam@zaneen.com or 1-800.388.3382