



Level

Architectural

ZANEEN

Lehroh



Straight on, towards a new idea.

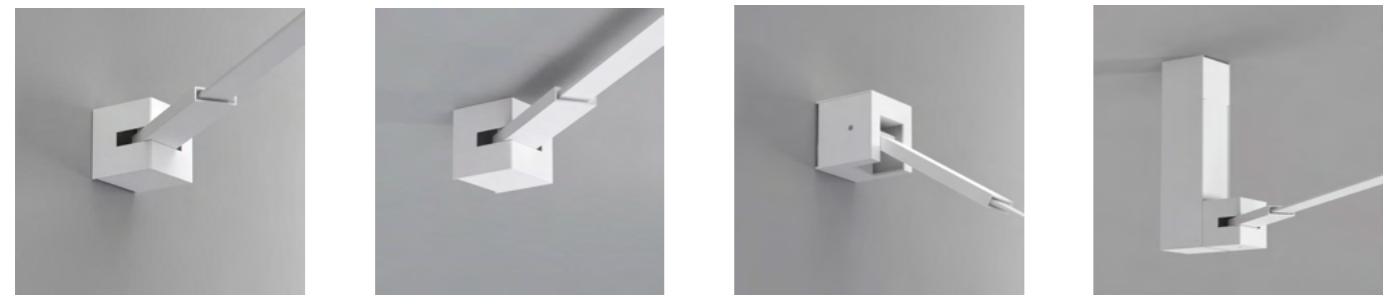
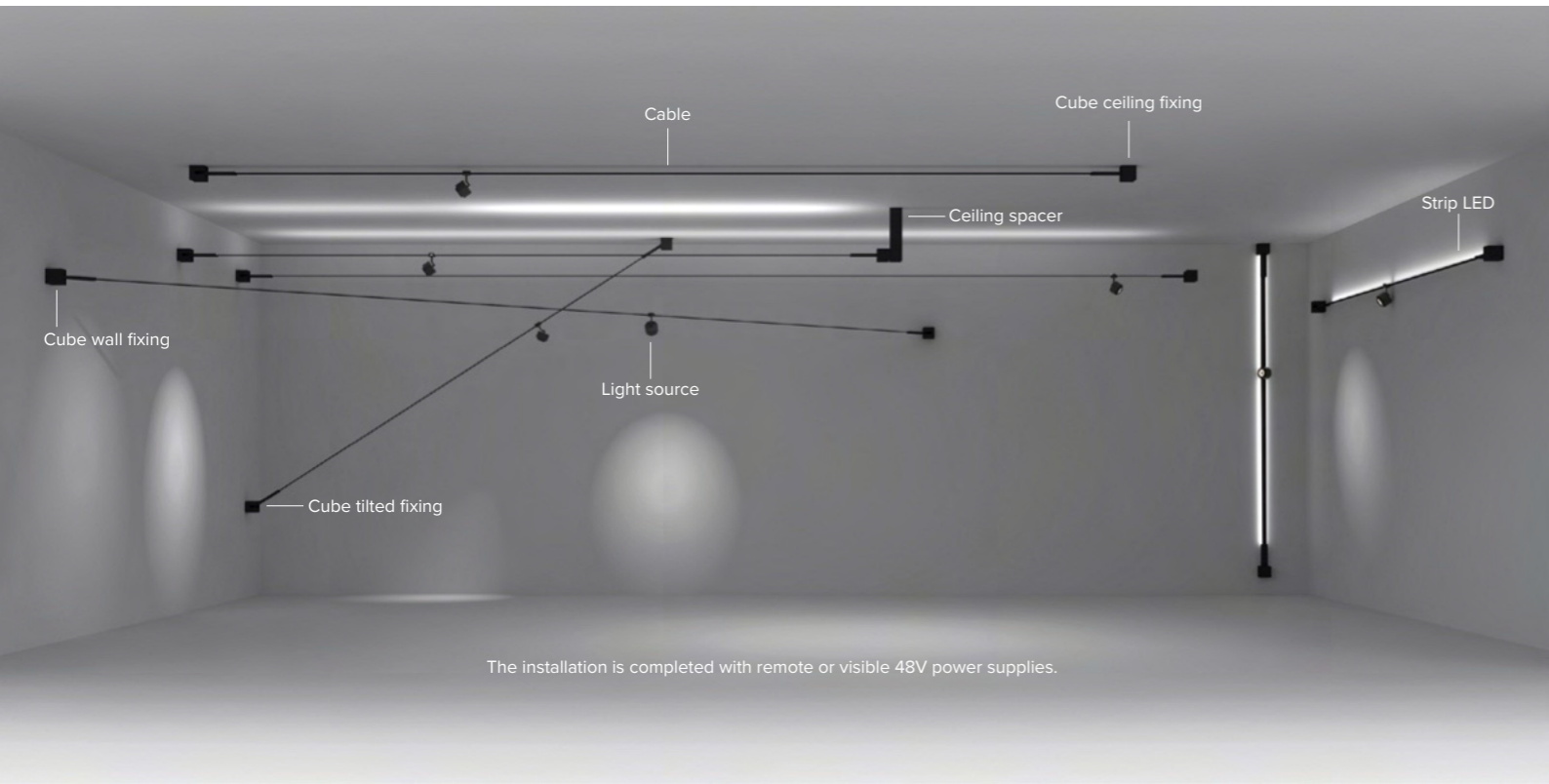
LEVEL is a new way of thinking about light: it combines the lightness of a cable system with the functionality of a track. Thanks to its flexibility it is easily transportable and can be cut to size. The simplicity of the system translates into installation speed.

LEVEL can be mounted on a wall, ceiling or wall to ceiling. LEVEL is a 48V system developed for both direct and indirect lighting. It integrates 2 external conductors that allow you to reposition the sources with a simple gesture, where you want and countless times, without cutting the cable.

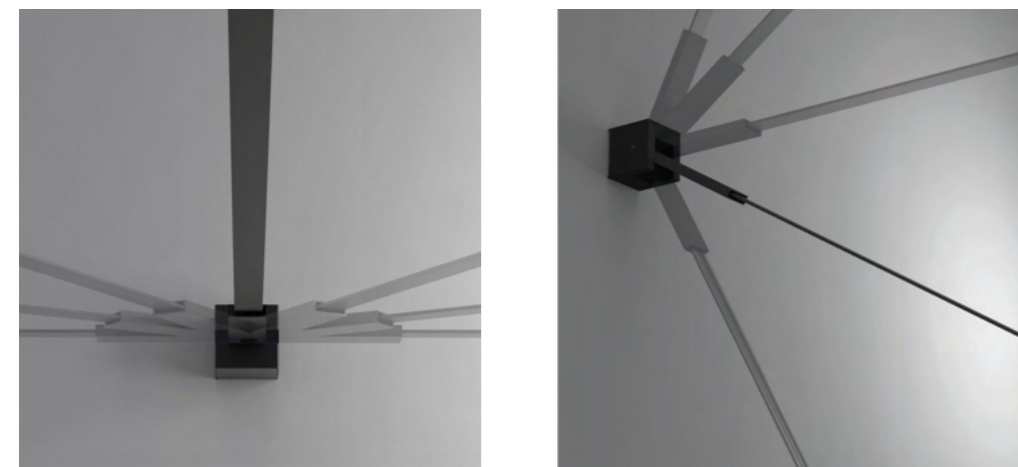
The system can mount different sources using an innovative conveyed wave technology for the control and dimming of the LED circuit.



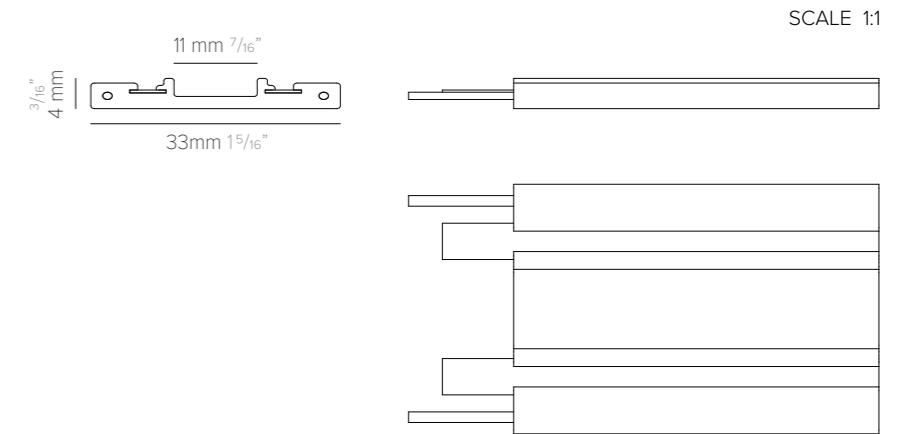
LEVEL is a flexible cable system that integrate itself into the lighting project to respond to the multiple demands of architecture.
Internally, it includes 2 steel tensioning cables that allow you to make stretches up to 10 m in length. The internal pin system of the connections, allows to rotate the cable horizontally at 180°. Infinite positions for unlimited uses. The system is equipped with indirect light sources and direct light spot sources.
LEVEL is electrified at 48V to overcome voltage drop limit.



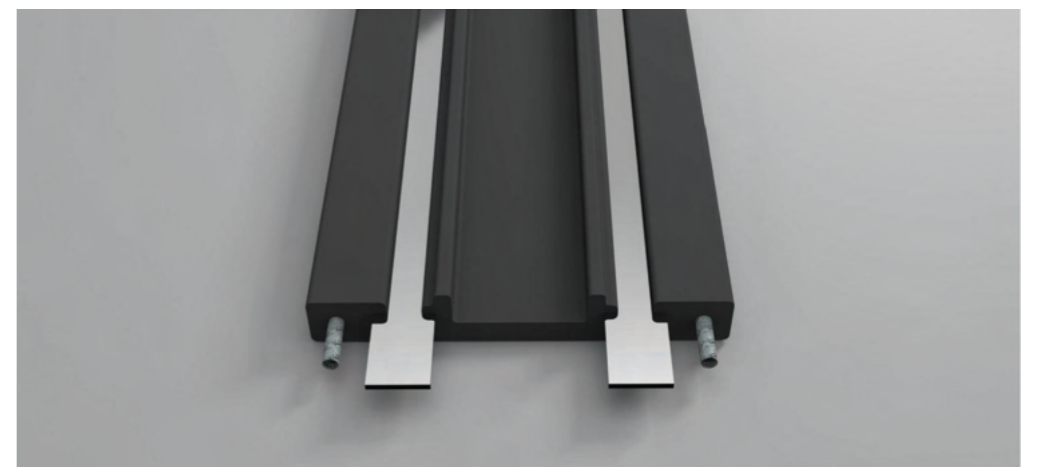
LEVEL can be installed with wall or ceiling attachment. The ceiling spacer allows you to make the most of the indirect light of the optional LED strip. The tensioning system rotates 180° allowing multiple installation possibilities. Attachments include turnbuckles. The maximum length allowed for the installation is 10 meters. Maximum load of the light sources, 2,5 kg - 5,5 lbs.

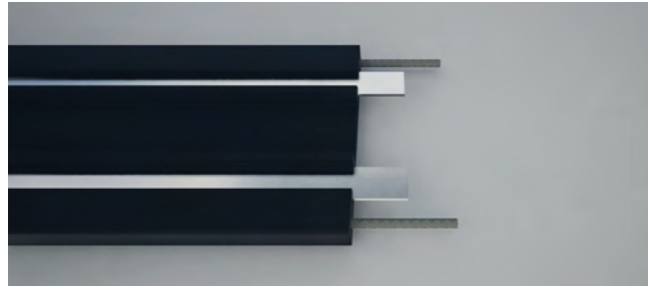


The cable, made of insulating plastic material, is available in three different finishes: black, transparent and white. The exposed conductors facilitate the connection of the light source.

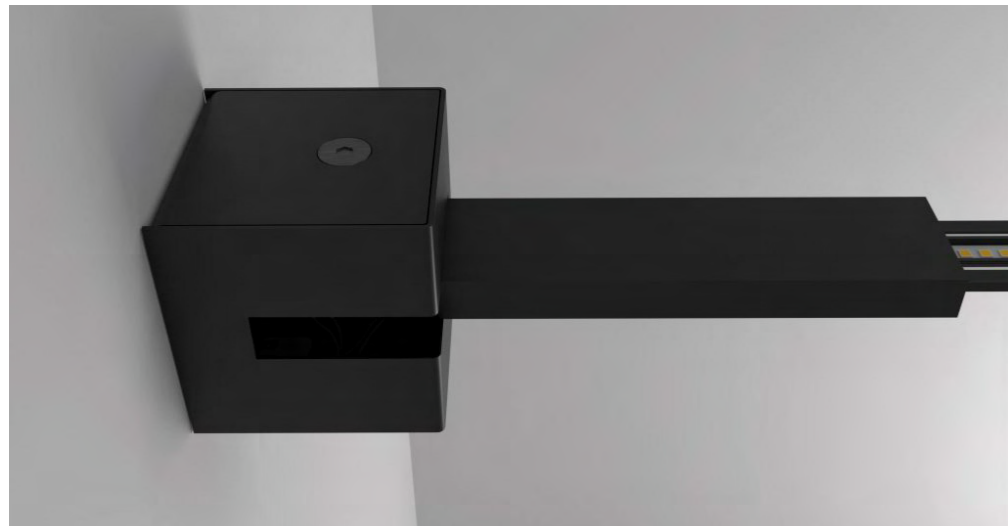
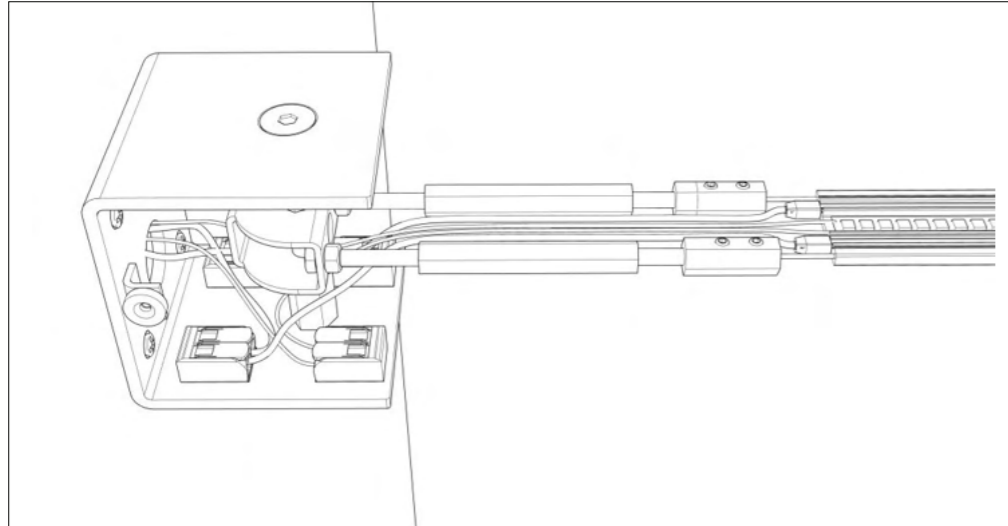


The cable is equipped with nickel-plated copper conductors for conducting the voltage [48V - Max 100W] and a double steel cable for its tensioning [Max 10000 mm - 393 11/16"]. It is supplied with 400 mm - 15 3/4" of excess to facilitate the installation phase [5000 mm = 5400 mm / 10000 m = 10400 mm].

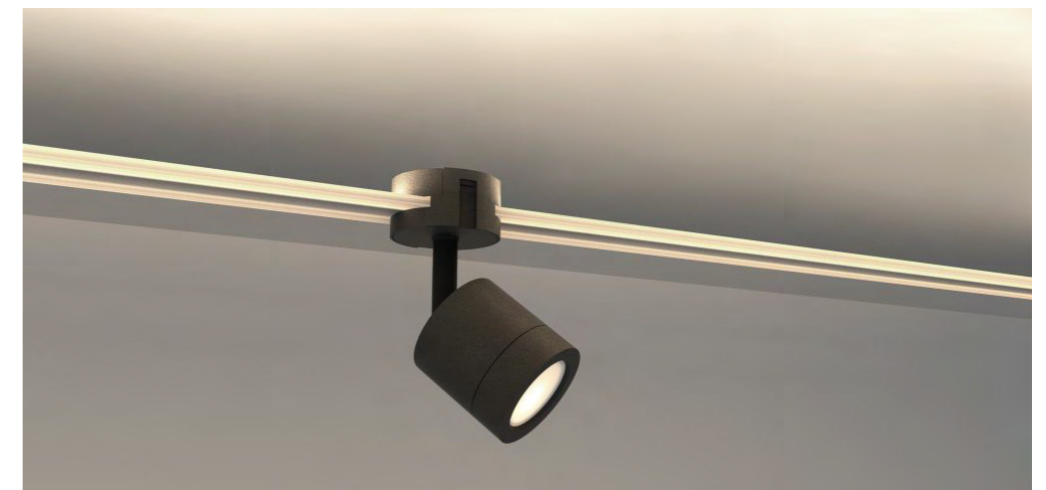


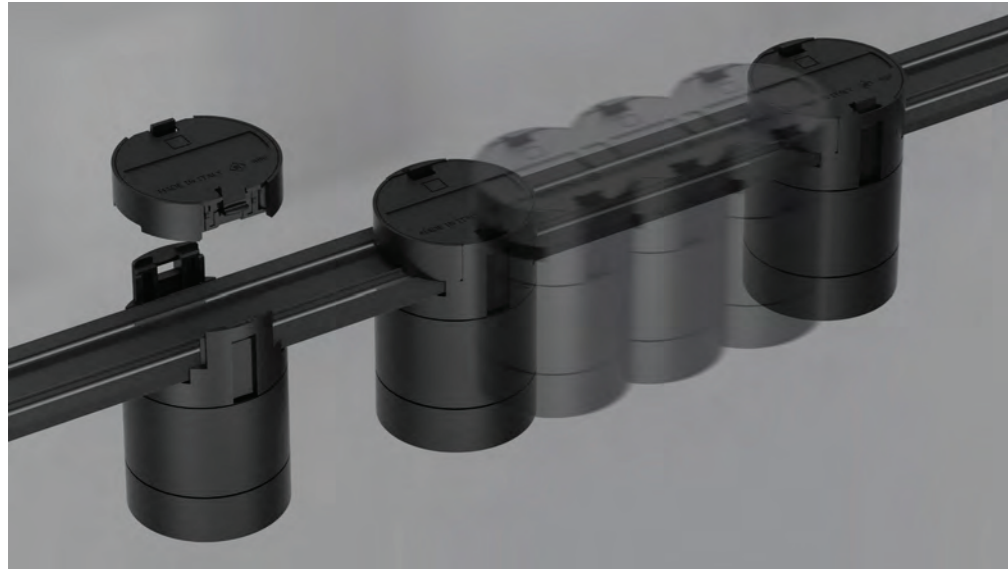


The cable, properly prepared, is inserted into the tensioning devices. The electrical conductors are connected to the power supply through the harness with connectors included in the tensioner assembly package. The connection of the LED strip remains separate for independent light. A magnetic cover and a final finishing cover are fixed at the end of the tensioning of the cable and of the connections.



The shape of the cable allows the installation of a LED strip [optional 13W/m, 48V maximum width 10mm] for indirect lighting. The light emission of the LED strip enlightens the cable in its transparent version. The 48V LED strip has an IP54 degree of protection, obtained through protection with nano technologies for best lumen yield and best color rendering.

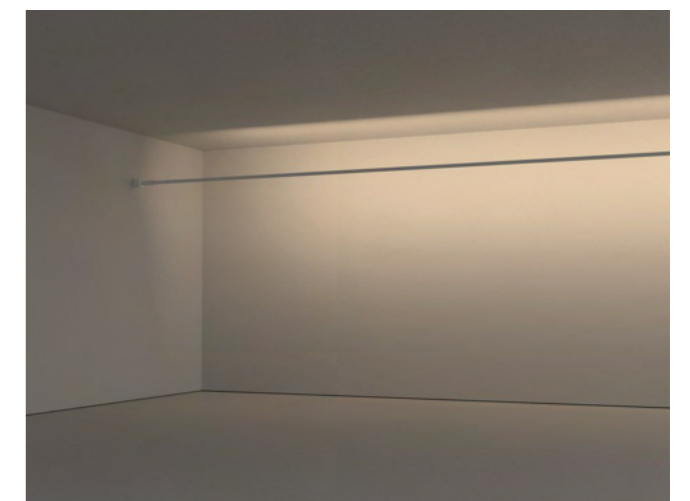




The quick coupling device, combined with the exposed conductors, allows easy installation and repositioning of the source without the need for tools.



The LEVEL system cable can also be installed towards the wall to obtain diffused lighting. The distance to be considered from the wall must be between 1 m and 1.5 m depending on the height of the ceiling and the type of light effect to be obtained.





ZOOM sources can be moved and added at will, with extreme simplicity, through the snap fastening system. Adjustable optics from 12 to 46 degrees for the best adaptation of the light effect. Painted aluminum body.



ZOOM with its rotating zoom optic [patent pending] allows endless beams from 12 to 46 degrees.



ZOOM with its rotating zoom optic [patent pending] allows endless beams from 12 to 46 degrees. Different shade LEDs [2700K, 3000K], CRI 97.

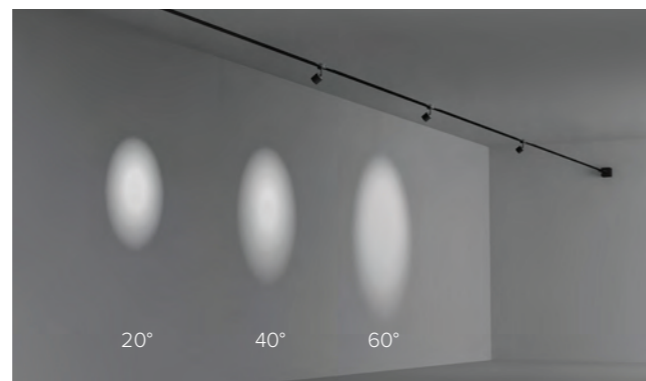






MINI are compact sources that can be moved and added at will, with extreme simplicity, through a snap fastening system. Easy replacement of secondary optics. Painted aluminum body. Integrated dimmable electronics.

The installation of the LEVEL system in vertical position is allowed only with the adjustable MINI source.
 MINI sources can be connected to other types of systems [DALI, Insulated pushbutton, Potentiometer Linear 100K, 0-10V Passive, 1-10V Passive].
 Different shade LEDs [2700K, 3000K]. CRI 97. User interchangeable optics [20°, 40°, 60°].

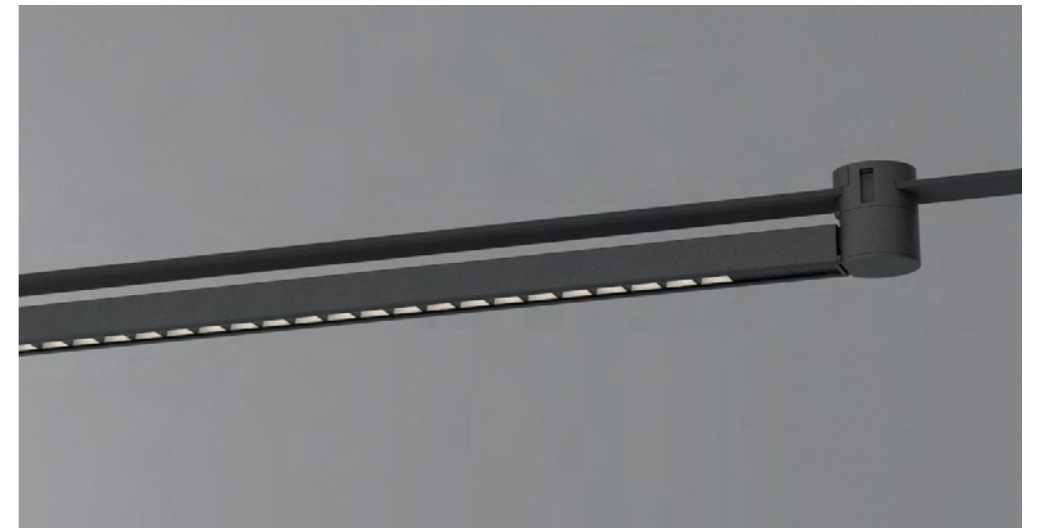
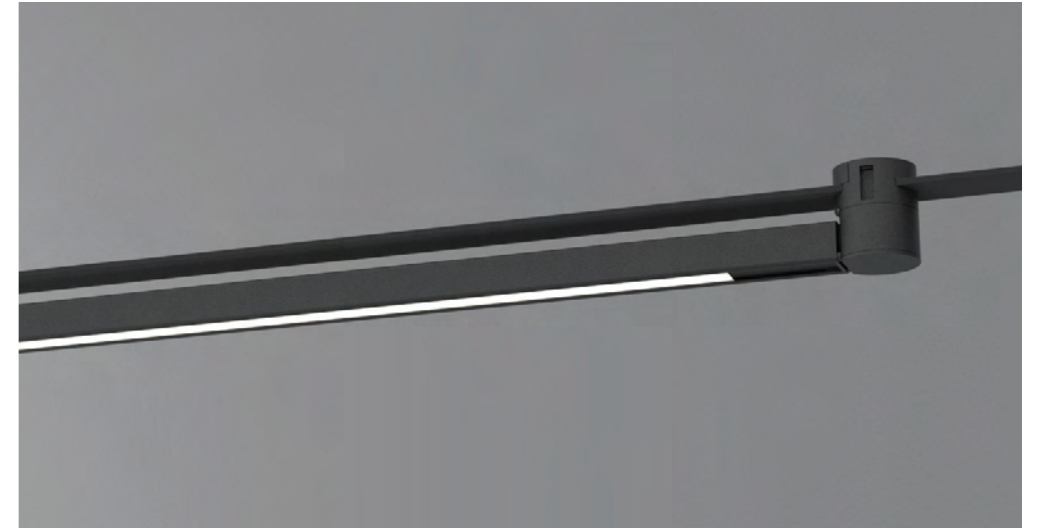




The STUDIO sources can be moved and added at will, with extreme simplicity, through the snap fastening system. Available in the Dark version and in the diffuser version. Painted aluminum body. PWM dimmable electronics compatible with all control technologies.



The LEVEL STUDIO sources can be rotated up to 90° on both sides, allowing lateral lighting of the environment. Available in the Dark version and in the diffuser version. Painted aluminum body.



LEVEL STUDIO sources are available in the version with diffuser and in the version with Dark optics.





ZANEEN

This product catalog has been provided by Zaneen.
Contact your local representative, zteam@zaneen.com or 1-800.388.3382