

&

CUSTOM

ZANEEN

A solid red circle containing white text.

Through
our values,
we promise
you
reliability.

Since 1981

“We find
strength in our
relationships
from partners
to clients.”



LABORATORY

Our in-house UL/CSA/ETL lab ensures North American safety standards, seamless customization, and impeccable quality assurance for each luminaire we deliver.

DIVISIONS

Architectural

Innovative solutions for precision lighting.

Design

Extensive range of material, form and style.

Exterior

Cutting-edge technology meets craftsmanship.

Custom

Crafting bespoke luminaires with expertise.



VALUES

A commitment to unwavering reliability in every aspect of our business.

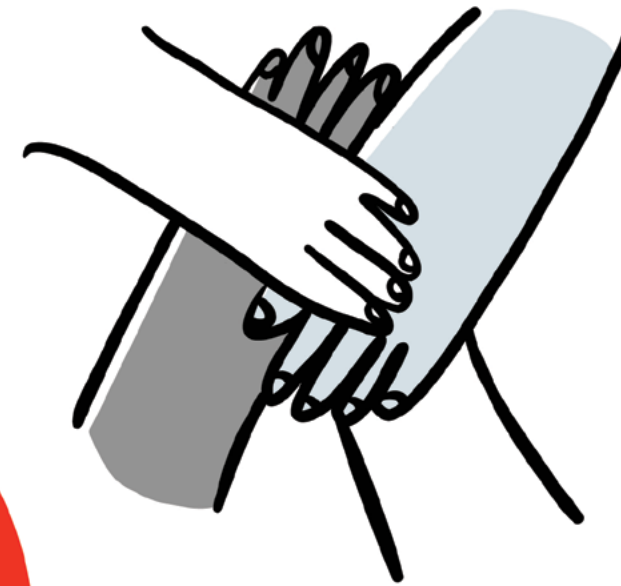
Forging strong partner and client bonds.

Ensuring top-tier quality and technical advancement in our products.

Providing dependable, comprehensive client services.

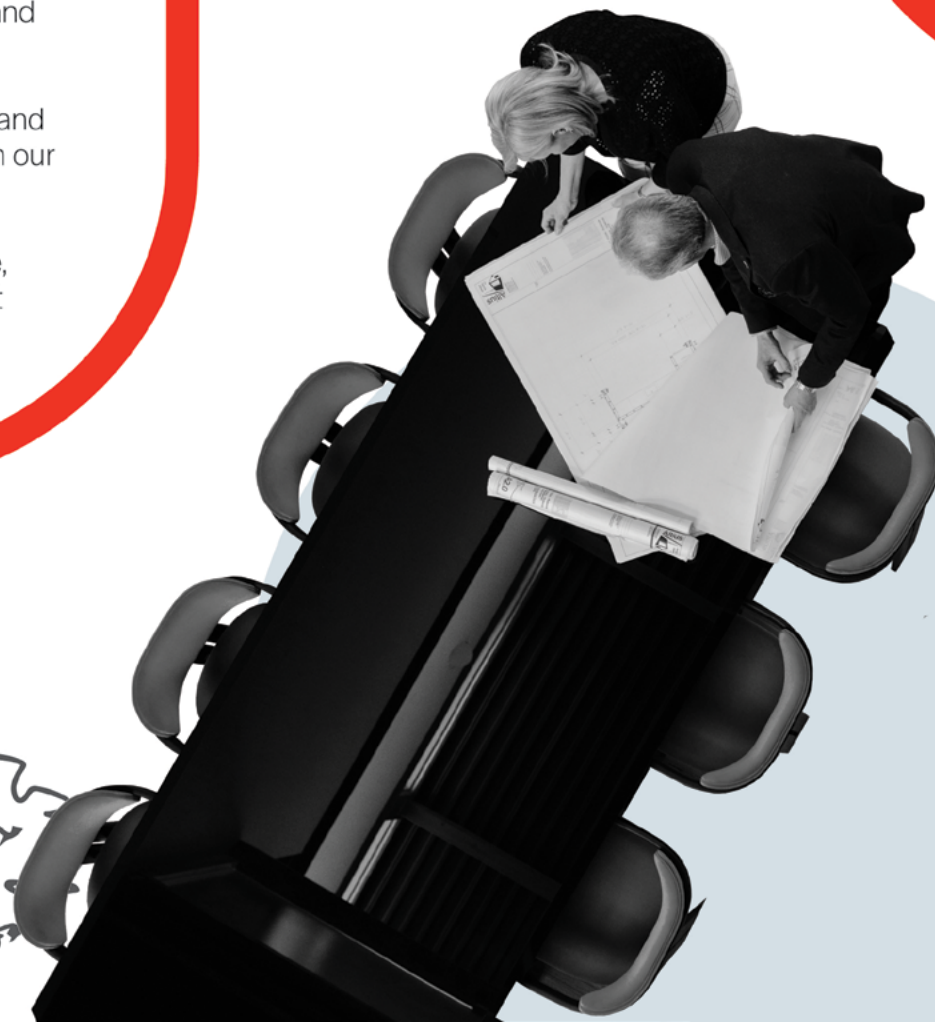
PROJECTS

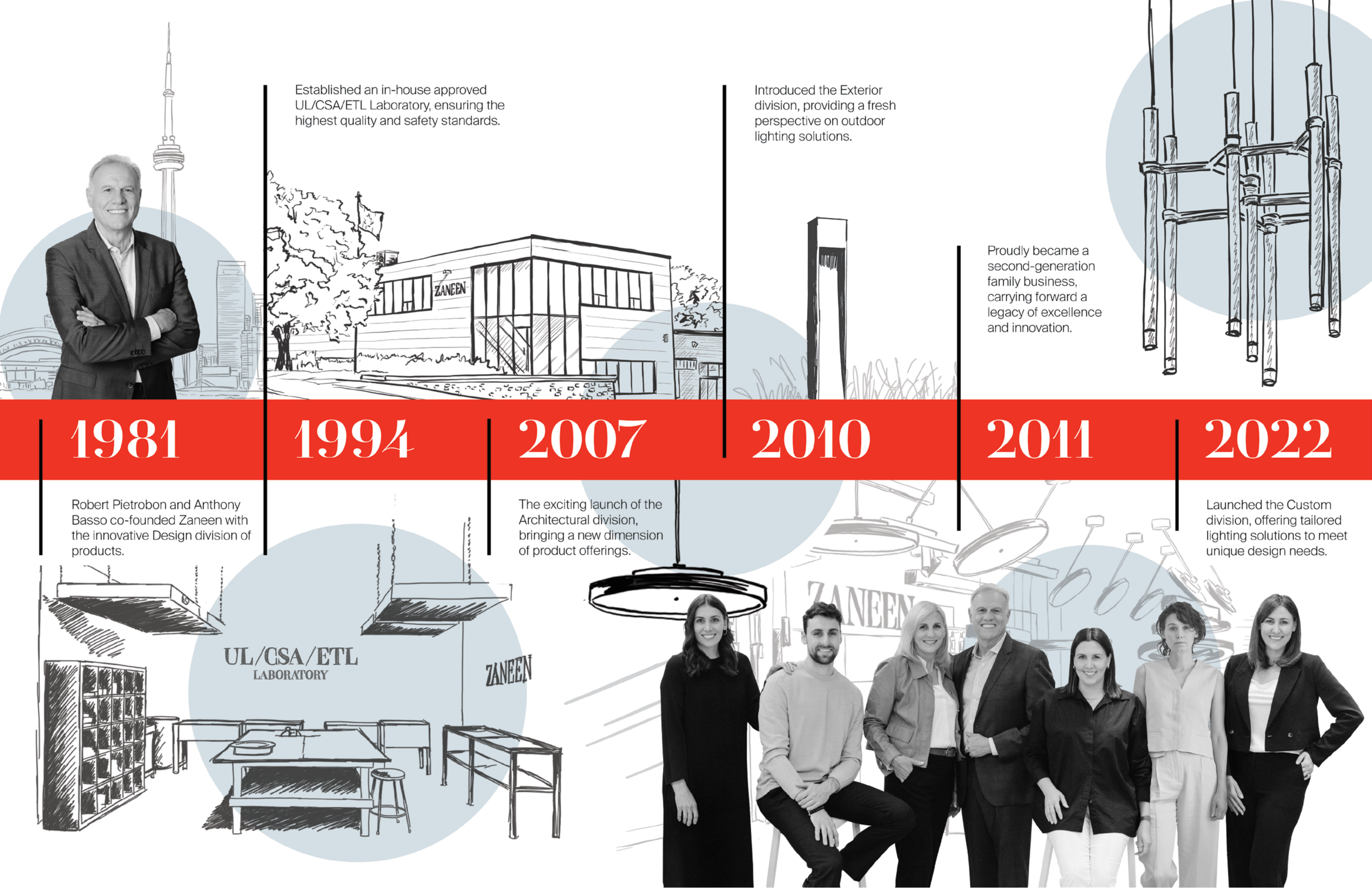
Zaneen serves academia, commercial, healthcare, hospitality, national accounts, and residential sectors. Collaborating with top professionals in North America, Mexico, and the Caribbean for outstanding outcomes.



PARTNERS

A collection of established European manufacturing partners exclusively available in North America through Zaneen, each with their own unique product offering.





Established an in-house approved UL/CSA/ETL Laboratory, ensuring the highest quality and safety standards.

Introduced the Exterior division, providing a fresh perspective on outdoor lighting solutions.

Proudly became a second-generation family business, carrying forward a legacy of excellence and innovation.

Launched the Custom division, offering tailored lighting solutions to meet unique design needs.

1981

1994

2007

2010

2011

2022

Robert Pietrobon and Anthony Basso co-founded Zaneen with the innovative Design division of products.

The exciting launch of the Architectural division, bringing a new dimension of product offerings.

UL/CSA/ETL
LABORATORY

ZANEEN

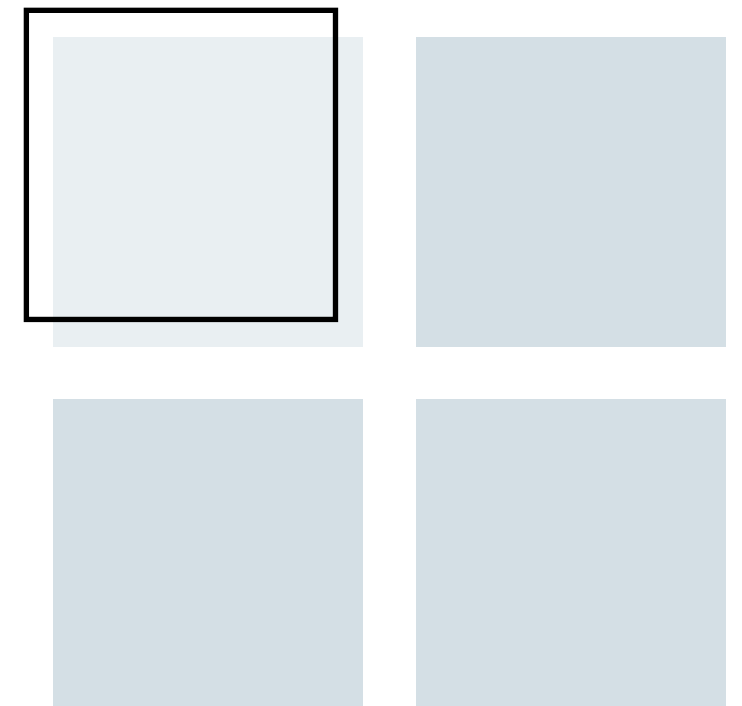
ZANEEN

Studio Zaneen, the exclusive brand in Zaneen's Custom division, is an established leading provider of tailor-made lighting designs.

With a deep passion for creativity and a commitment to exceptional craftsmanship, Studio Zaneen offers flexibility by providing both **modifications** and **custom solutions**.

Modifications, adjustments or scaling products in our current program to better suit your needs.

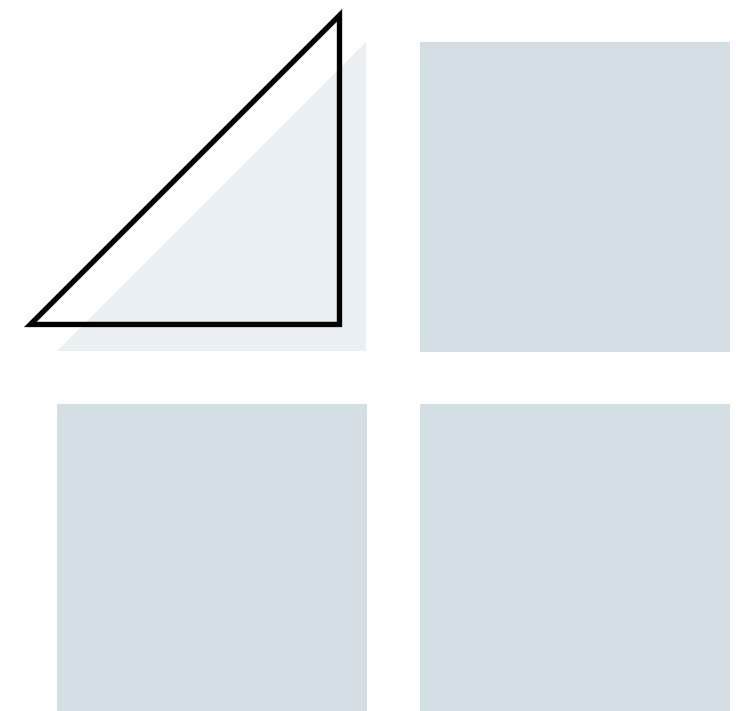
Custom solutions, creating a new one-of-a-kind luminaire specific to your project.



Under Studio Zaneen, your project will always meet UL/CSA approval for ease of installation.

We understand that lighting is more than just illumination; it has the power to shape experiences, evoke emotions and enhance the aesthetics of any environment.

Whether you're seeking to create an enchanting ambiance in a luxurious hotel, a striking visual display in a retail store, or an inviting atmosphere in a residential space, our team of skilled designers and engineers are dedicated to bringing your vision to life.



CONTENTS

Adaptations to fit project needs 7

Spotlight variations 8

The best out of light 9

New mounting types 11

Project integration 12

Creative Solutions 13

Think outside the box 14

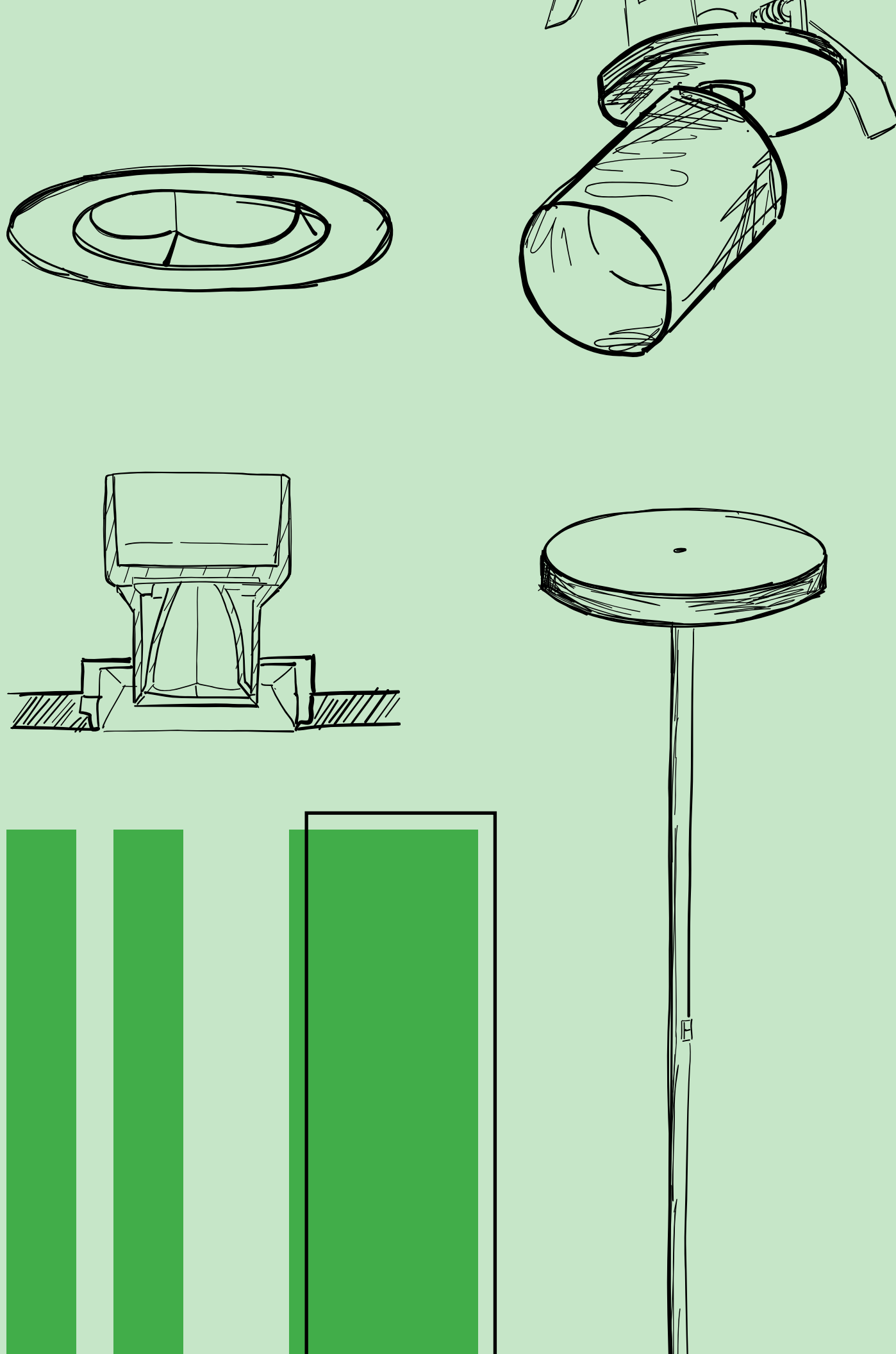
Go big and bold 17

Natural wood 21

Explore materials and shapes 23

Modular design 25

Project Profile: Auburn University 26



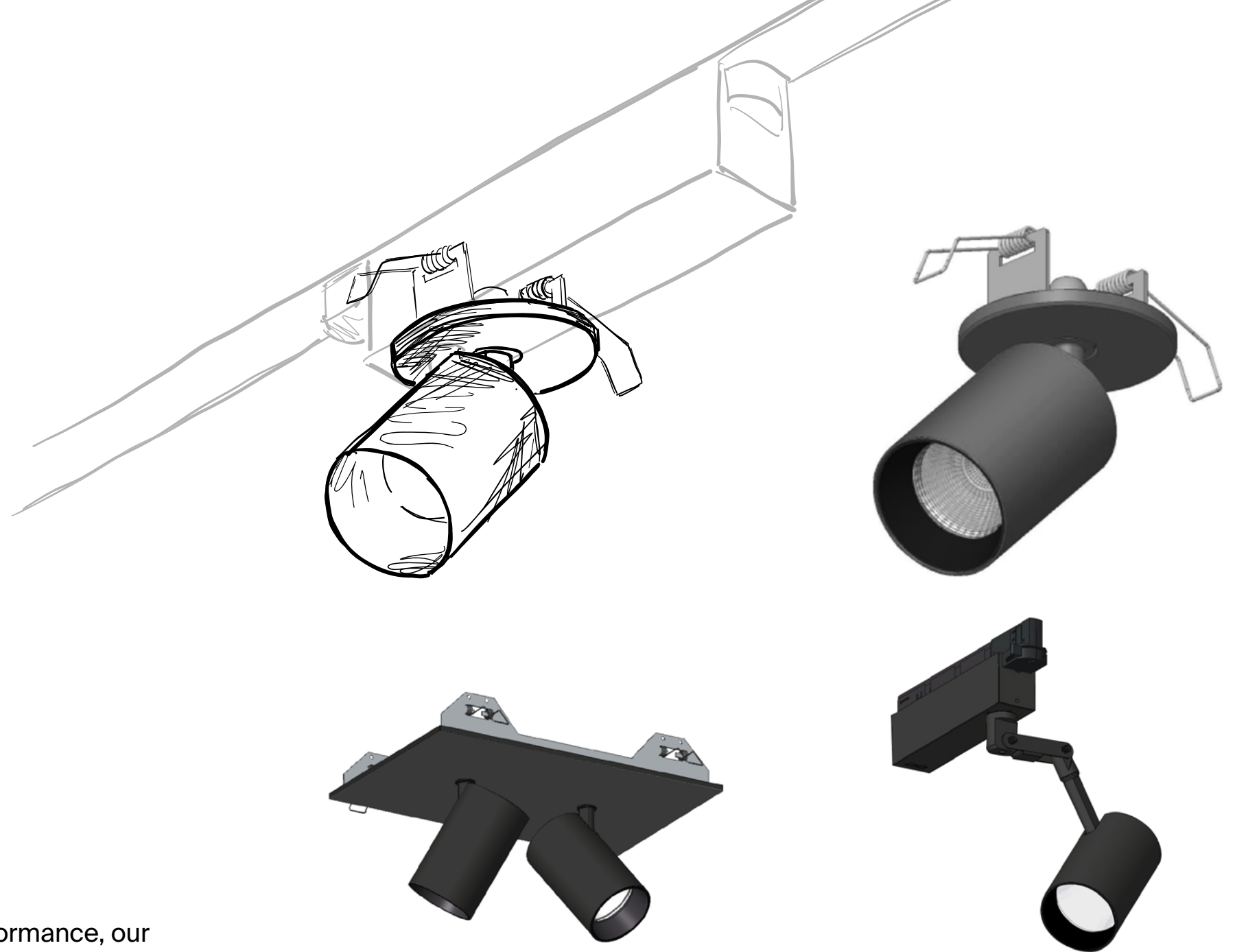
Adaptations to fit project needs

With Studio Zaneen, you're never pigeon-holed into one way of visualizing lighting solutions. Play with variations, mounting types and more to create the luminaire that checks every box for your project.

Spotlight variations

Utilizing cutting-edge technology to deliver unparalleled performance, our expert team of designers will work closely with you, ensuring that every aspect of your spotlight meets your exact specifications.

Whether you're showcasing artwork, highlighting architectural features, or simply setting the mood, a custom spotlight offers the flexibility to further enhance an environment.



Feel empowered to envision a desired end product with the flexibility to customize Centriq downlights. Studio Zaneen can match your specific preferences and requirements through different applications and mounting types.

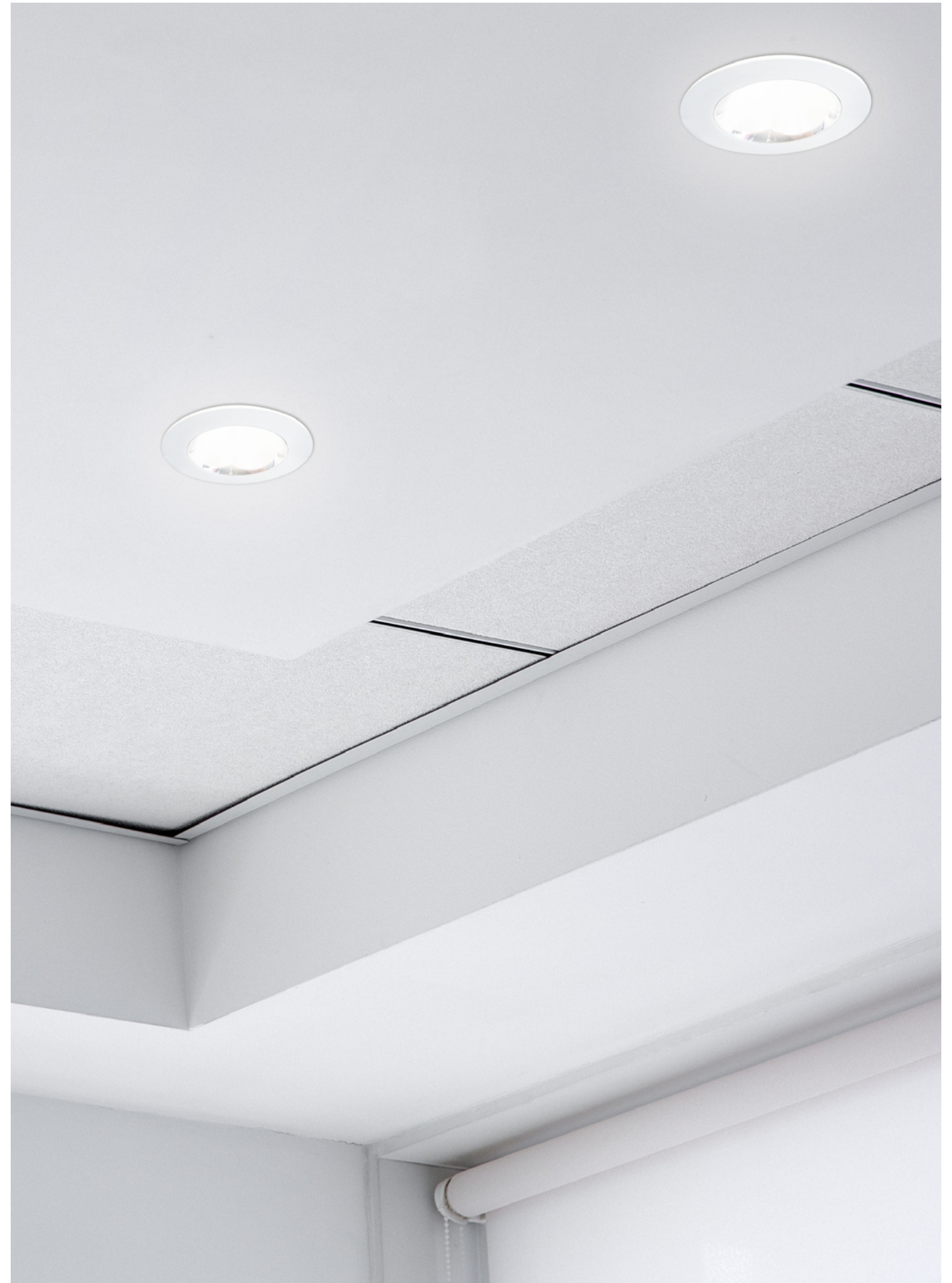
The best out of light

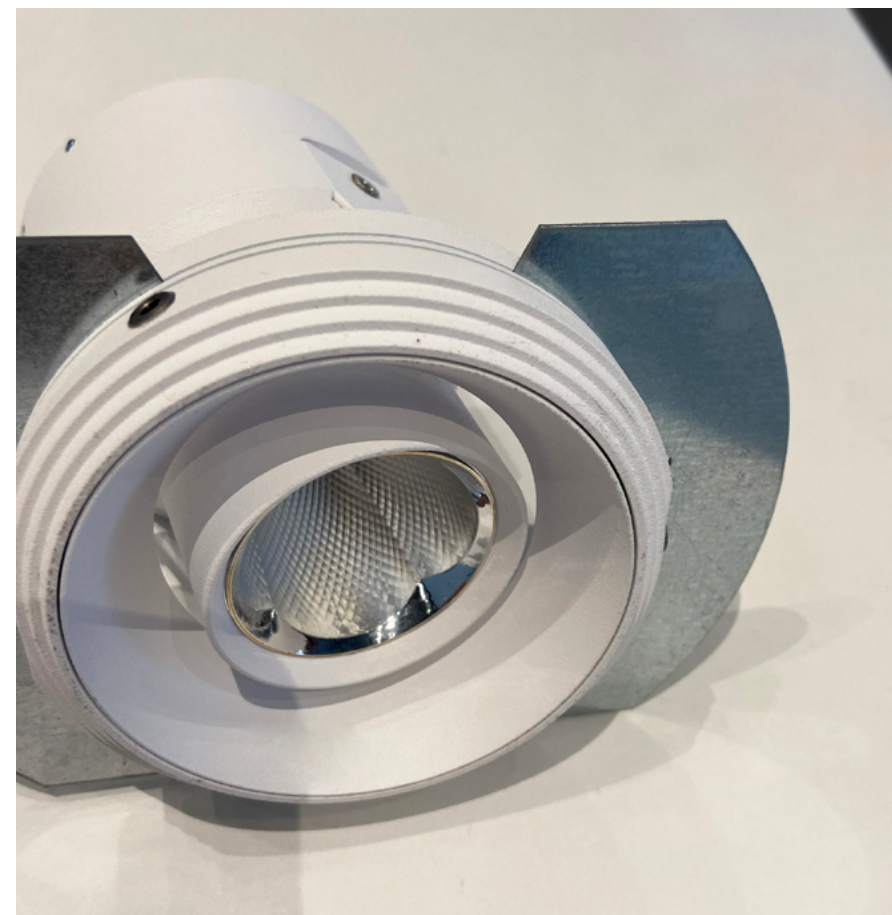
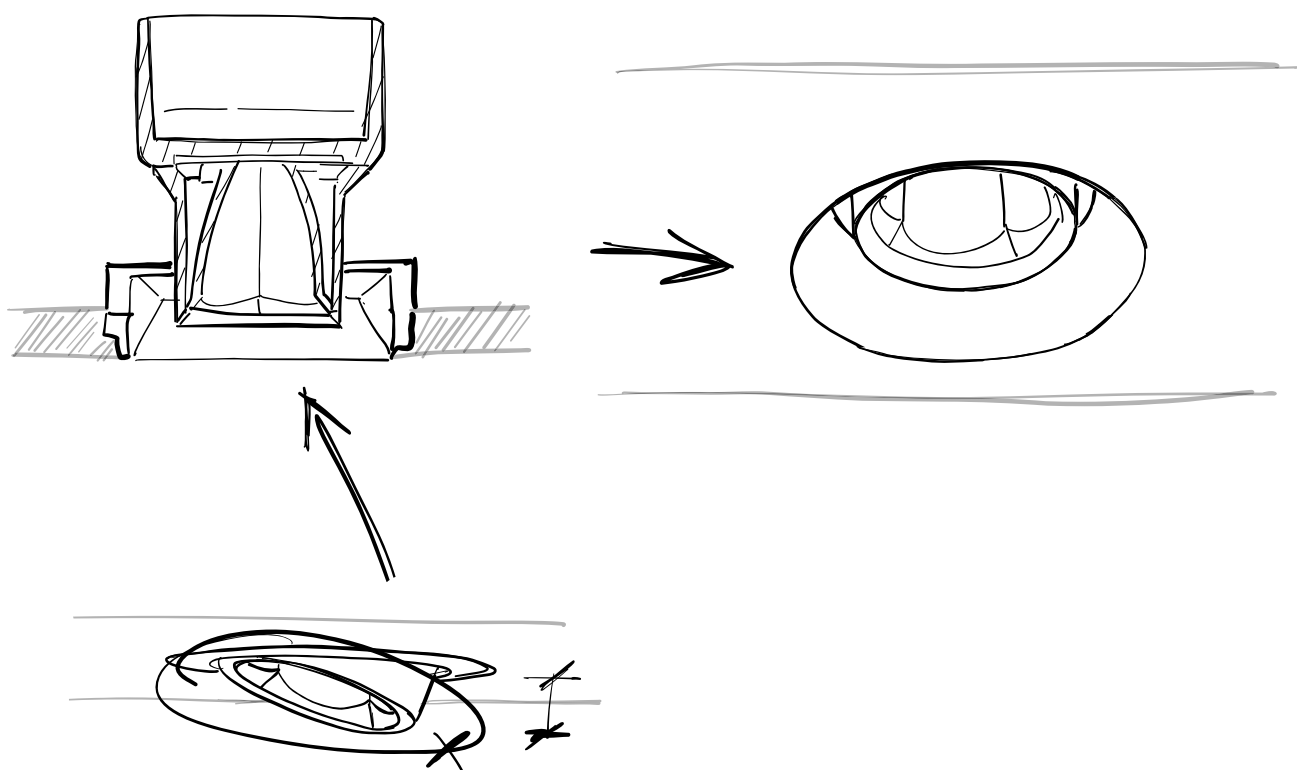
A lighting designer was looking for a technically advanced downlight to fit into the shallow housing available in their project's ceiling.

The solution? A custom Oiko Pro was specified and designed to meet that space requirement. Glare control was not compromised ($UGR < 19$) with no double scallops, ensuring optimal visual comfort while still delivering high performance and efficiency. We understand that every detail matters, and this custom Oiko Pro was designed to surpass the highest standards of performance and aesthetics.



The key to Oiko Pro's success lies in its simplicity and efficiency. With a minimalist design that remains consistent across all available shapes, it seamlessly integrates into any architectural setting, allowing its superior light emission to take center stage.



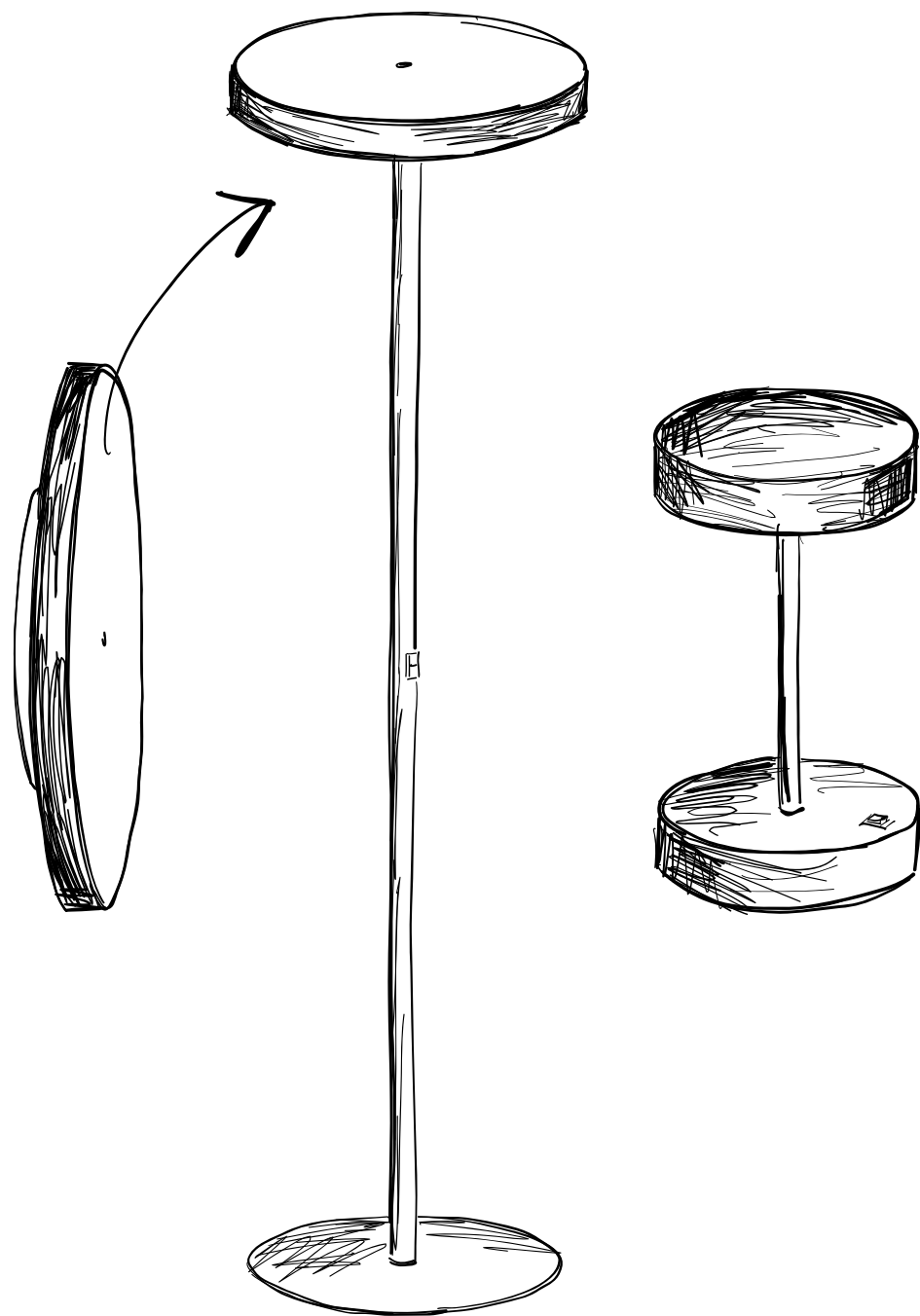


Oiko Pro features UGR of virtually 0 using the 14 and 34 degree spread. Even wider beam spread of 52 degrees maintains $UGR \leq 19$.

Performance meets subtlety with this custom request. The designer requested the exceptional performance and reflectors of our popular Oiko Pro adjustable range, but with a more discreet ceiling integration.

Studio Zaneen crafted a custom fitting that flawlessly blends into the ceiling, allowing full tilt range, and delivering the outstanding capabilities that define our acclaimed Oiko Pro range.





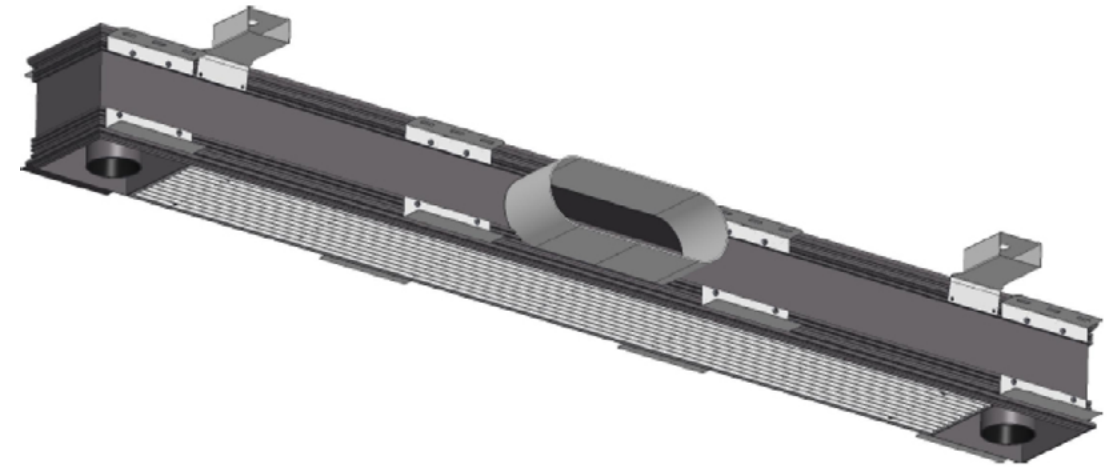
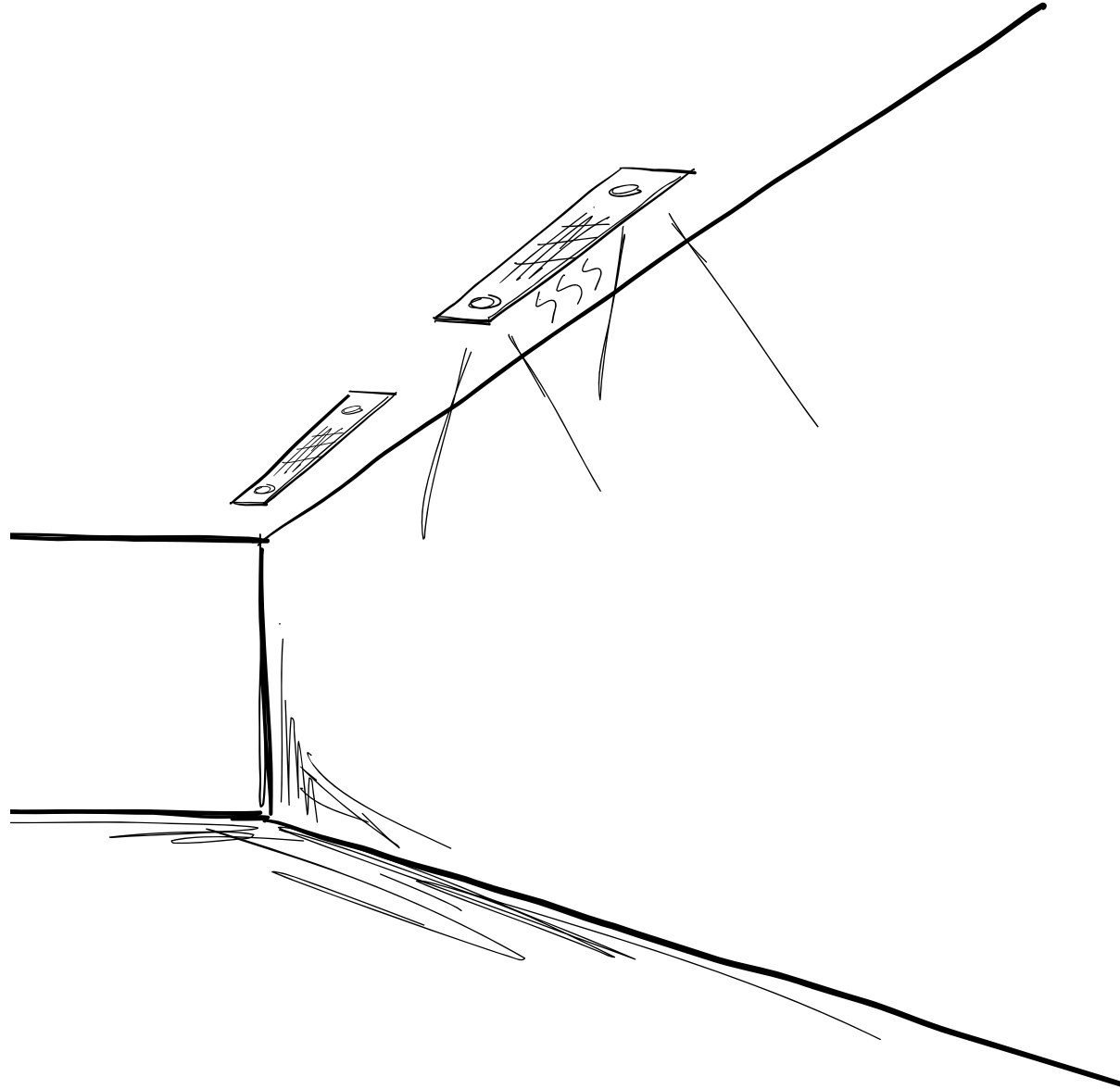
Our Sign Diva is known for its performance, diffusers and effective light distribution. This designer customized the luminaire in portable table and floor applications to allow for further dynamism.



New mounting types

Illuminate your space with style and functionality, while enjoying the freedom to specify the ideal mounting option that integrates into your environment.

Customize the mounting type that aligns perfectly with your project vision and requirements.



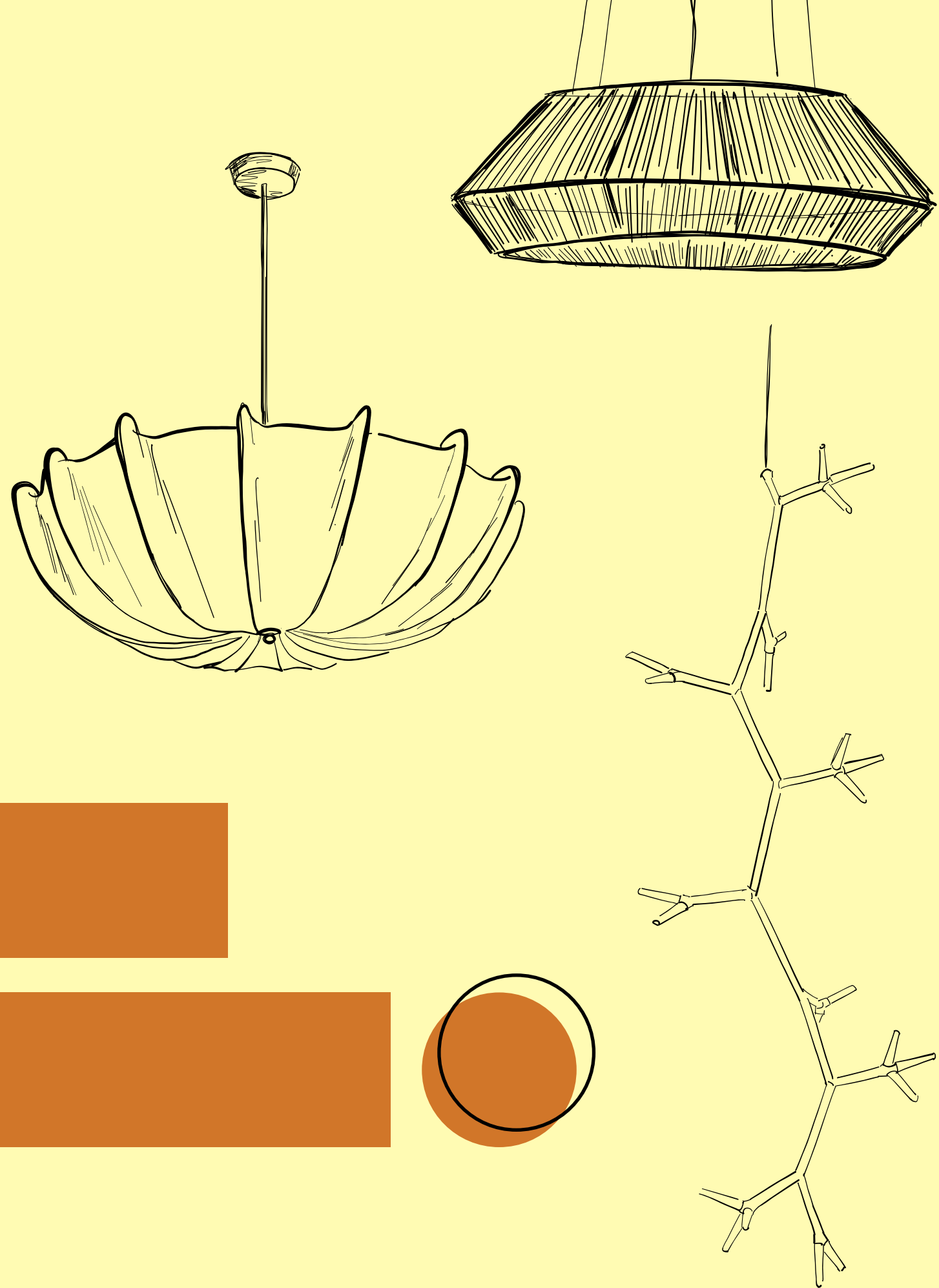
Studio Zaneen created a customized lighting solution that incorporated strategically placed cut-outs for seamless integration with HVAC systems, speakers, sprinklers, and motion sensors, ensuring a harmonious blend of functionality and design.

Project integration

In some circumstances where space is limited, the need for a bespoke lighting solution becomes imperative. In this instance where the HVAC system was in the way of the design concept, Studio Zaneen rose to the occasion by integrating the 2Look4 seamlessly *into* the HVAC system.

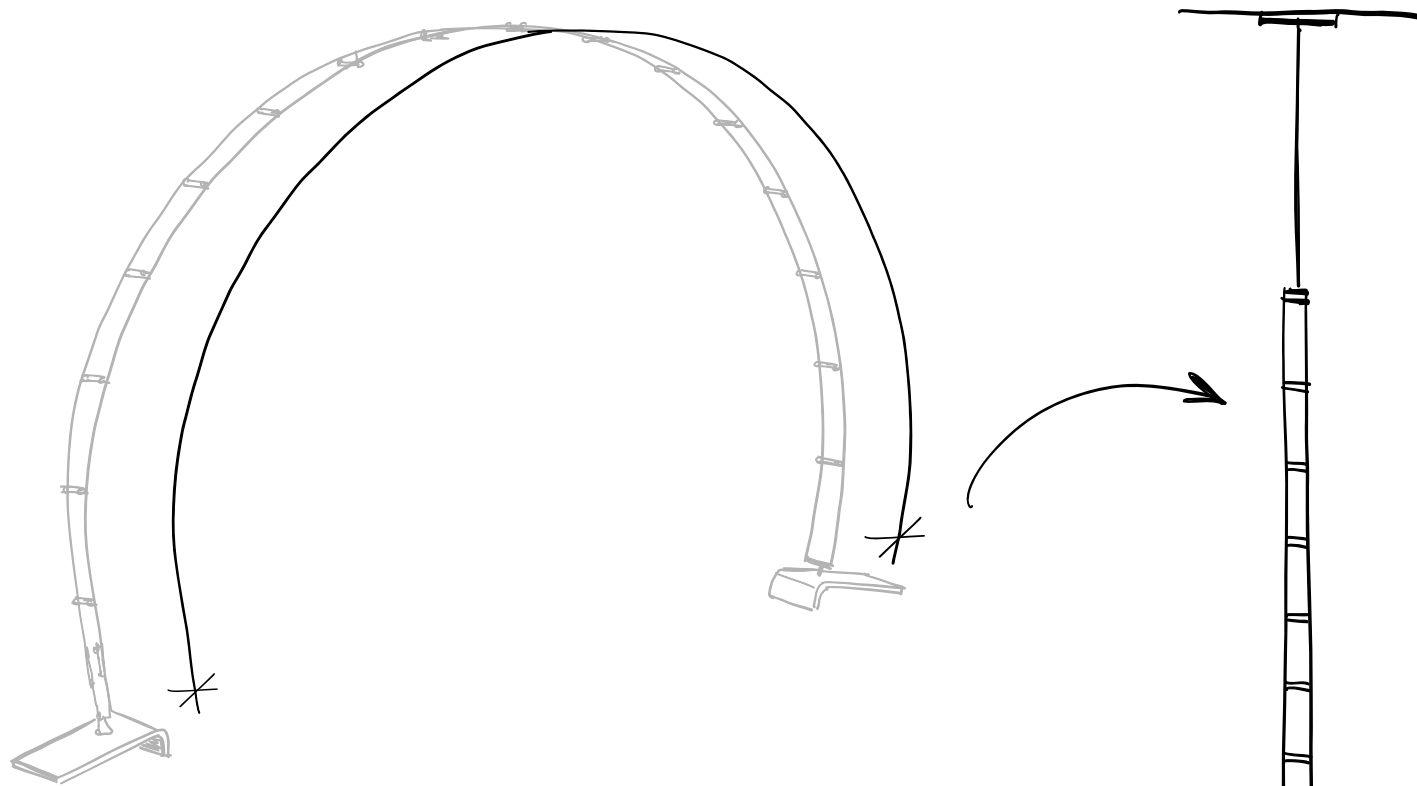
This innovative approach maximized space utilization while maintaining the highest standards of functionality and aesthetics.





Creative Solutions

Let your creativity shine as we bring your vision to life, delivering captivating solutions that leave a lasting impression.

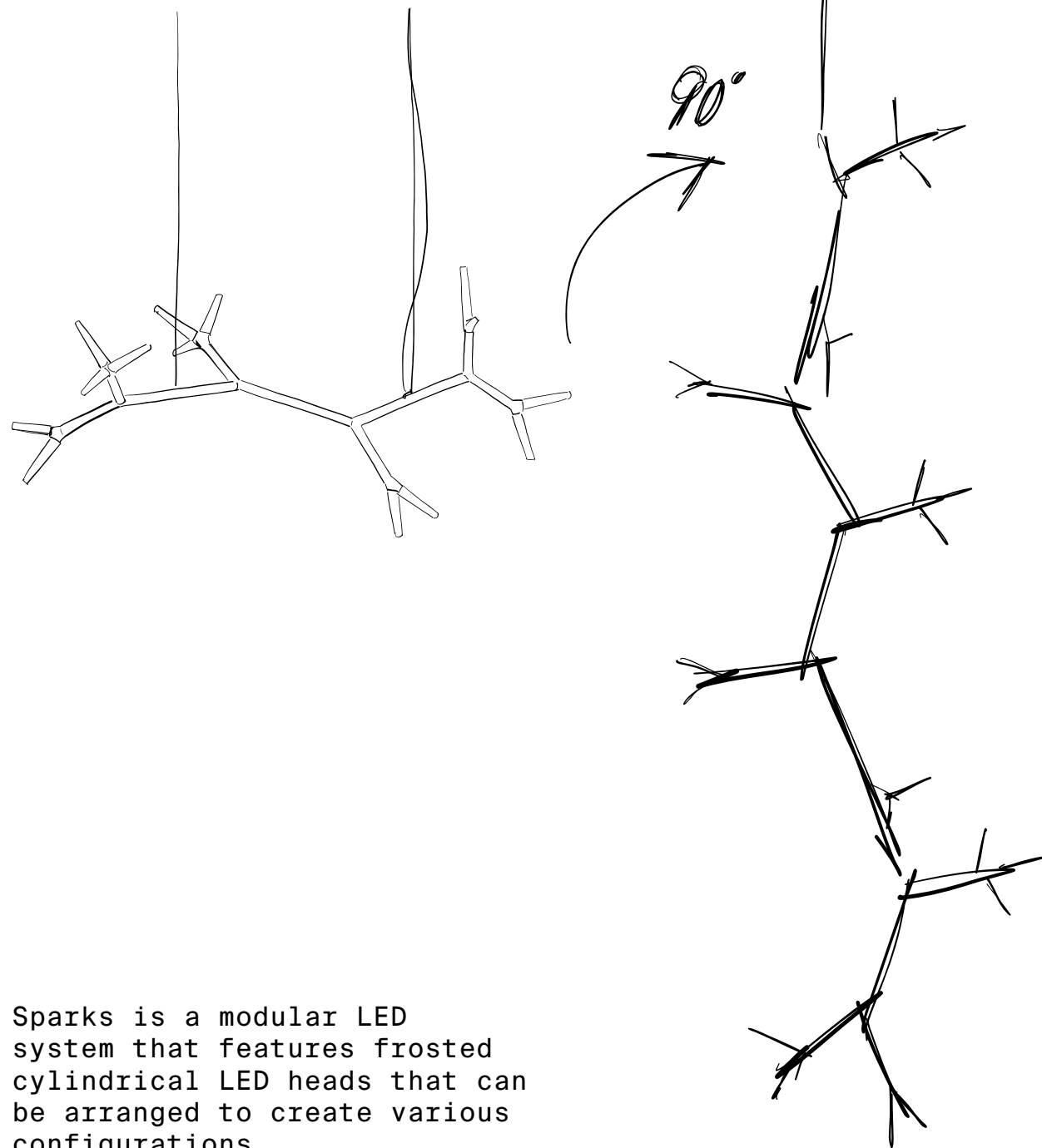


Think outside the box

Inspired by a desire for hanging droplets of light, a visionary designer dared to reimagine possibilities. Through the ingenious modification of our portable Raven fixture, Studio Zaneen brought this extraordinary vision to life.

By skillfully removing the arch bases and introducing lightweight hanging wire pendants, the luminaire was meticulously redesigned, transcending the ordinary.

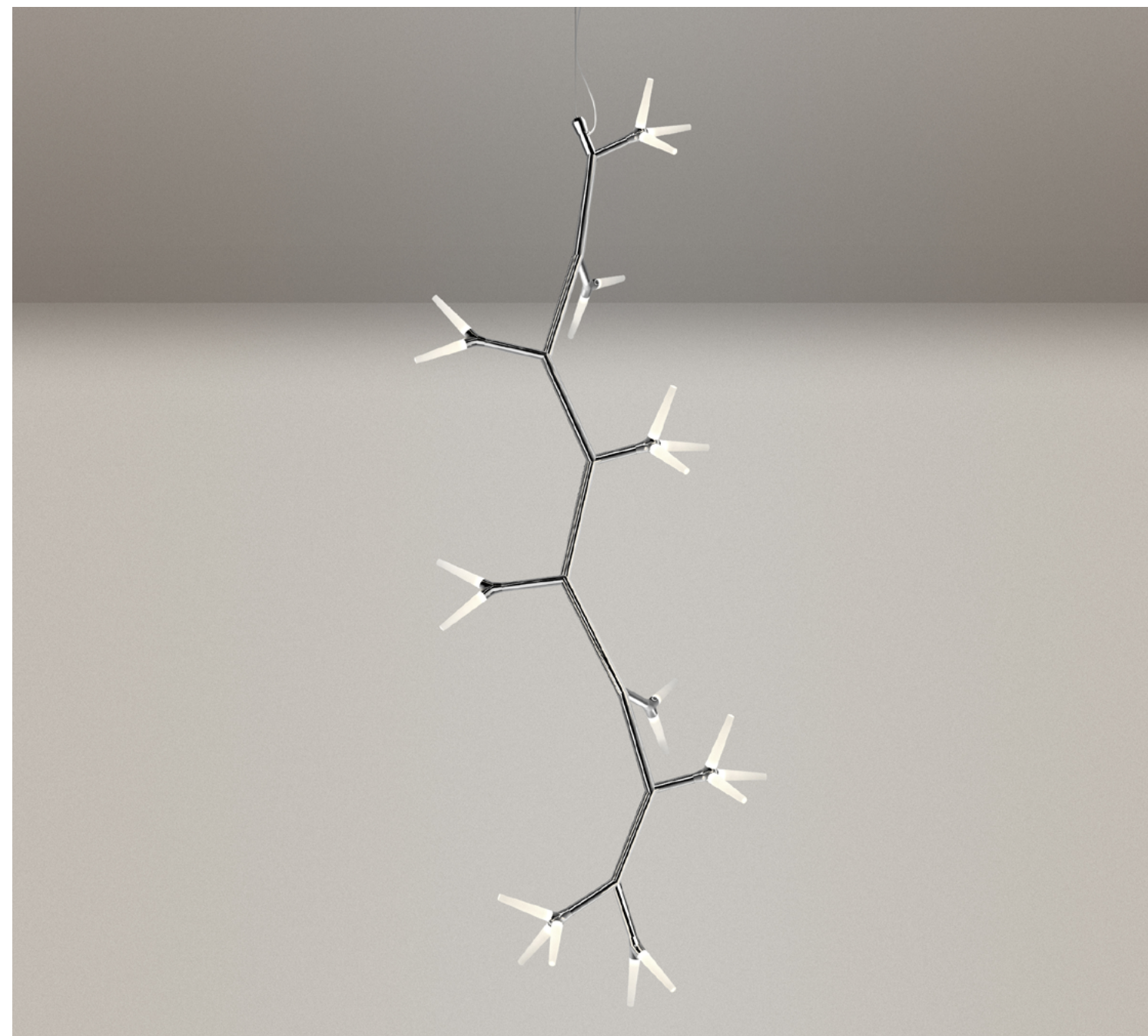




Sparks is a modular LED system that features frosted cylindrical LED heads that can be arranged to create various configurations.

Sometimes, the most remarkable transformations emerge from subtle shifts. In this case, a seemingly simple horizontal to vertical change revolutionized the entire design landscape.

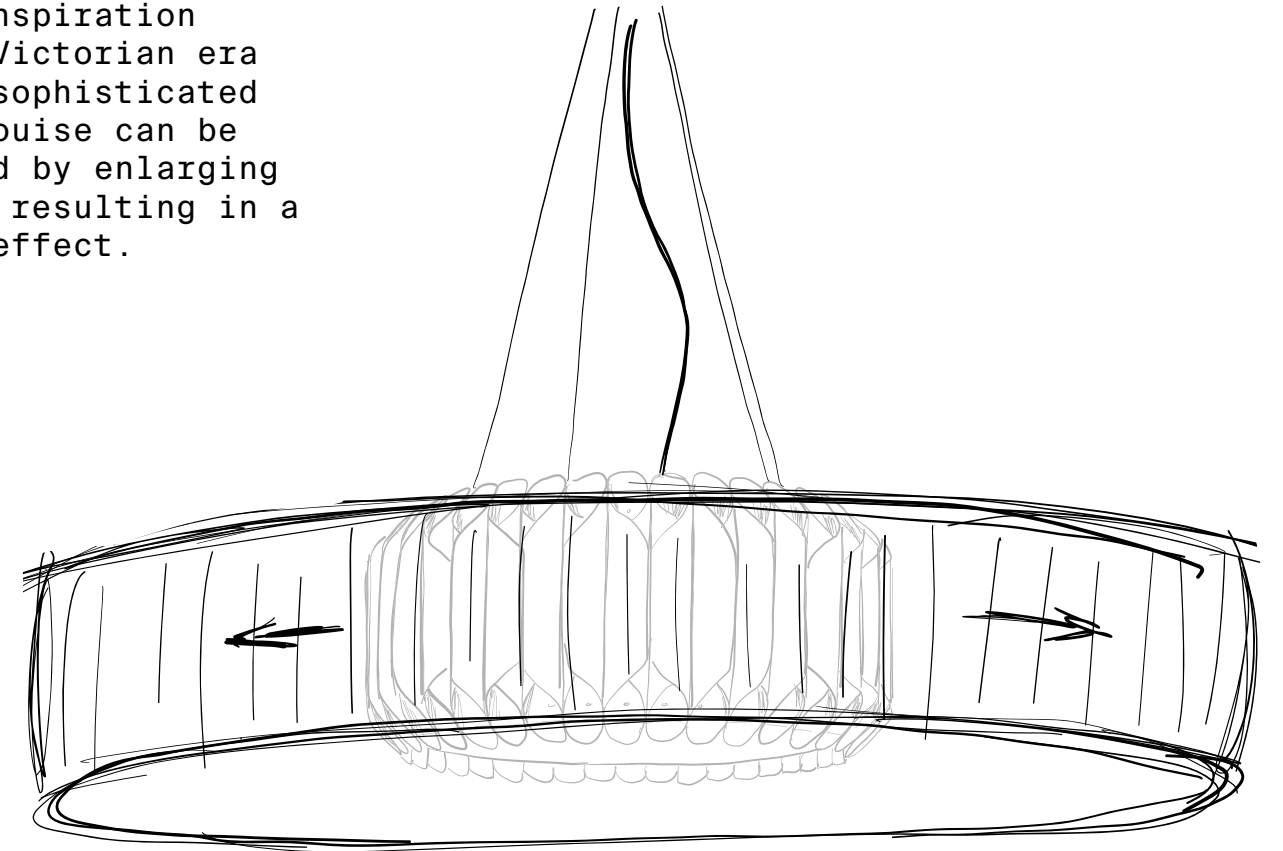
The Sparks suspension light was deftly rotated 90° to hang vertically in the space. This small yet significant adjustment breathed new life into the environment, forging an exquisite visual impact that defies expectations.







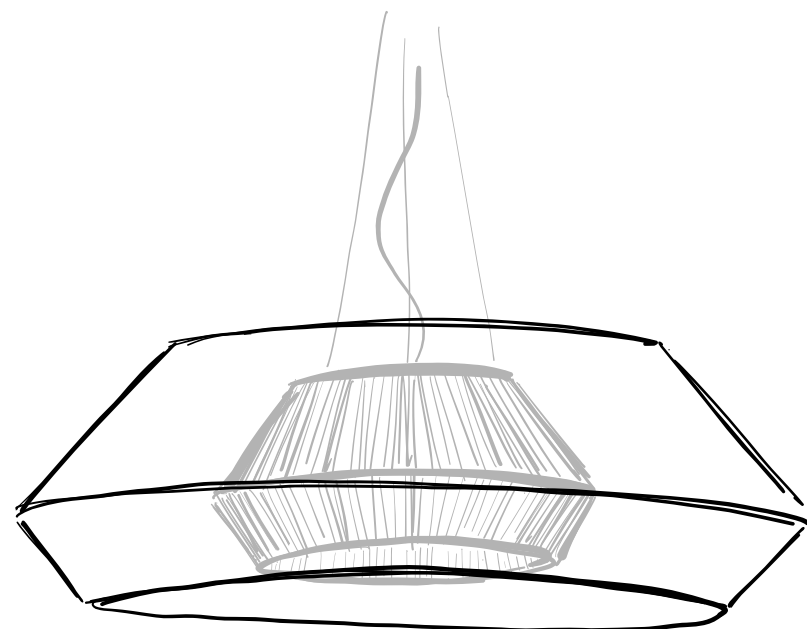
Drawing inspiration from the Victorian era with its sophisticated design, Louise can be modernized by enlarging its size, resulting in a dramatic effect.



Go big and bold

With the art of customization, you can take your lighting to new heights by envisioning and creating a larger-than-life solution, creating a grand and impactful centerpiece that commands attention in any space.

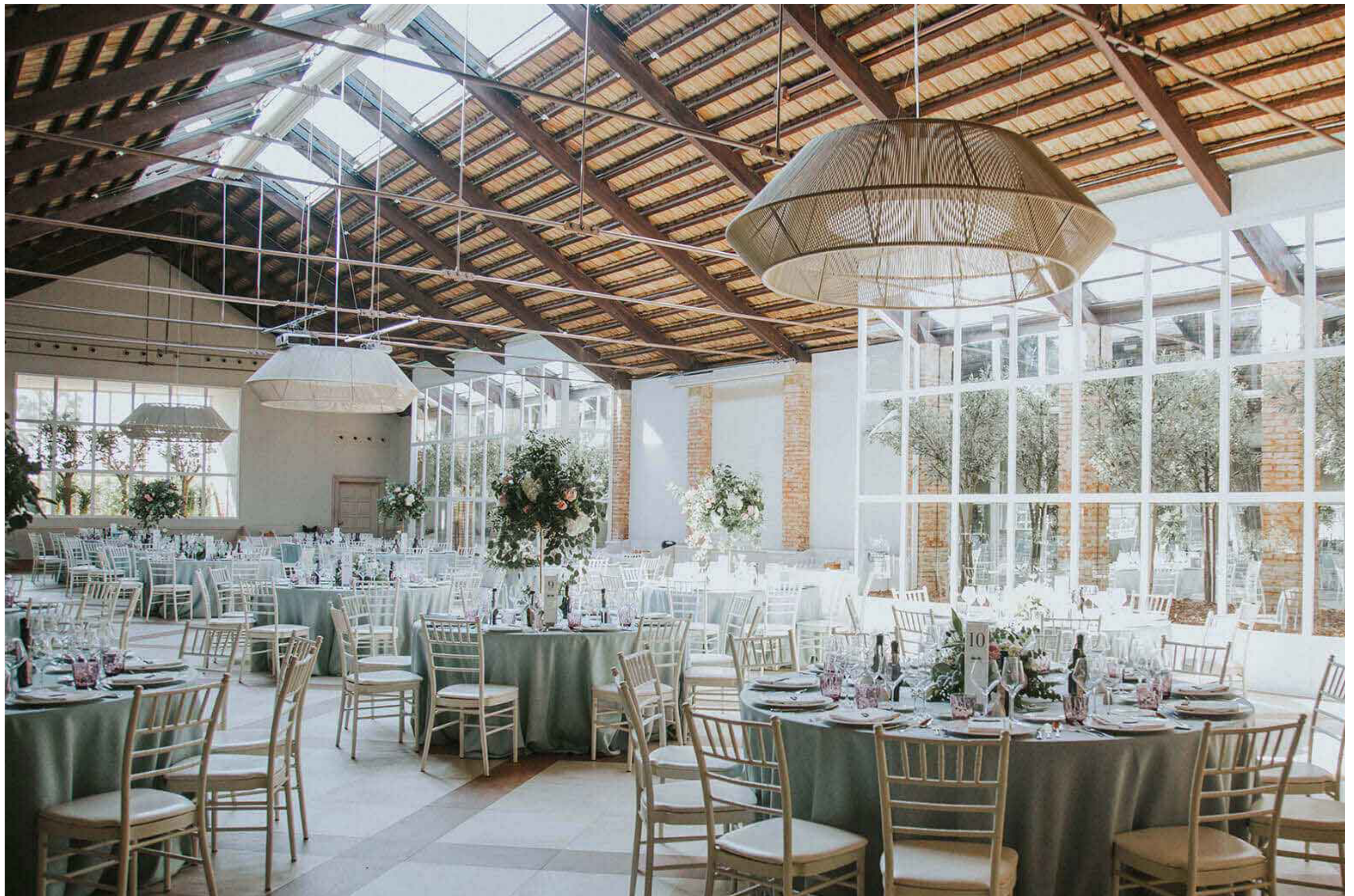


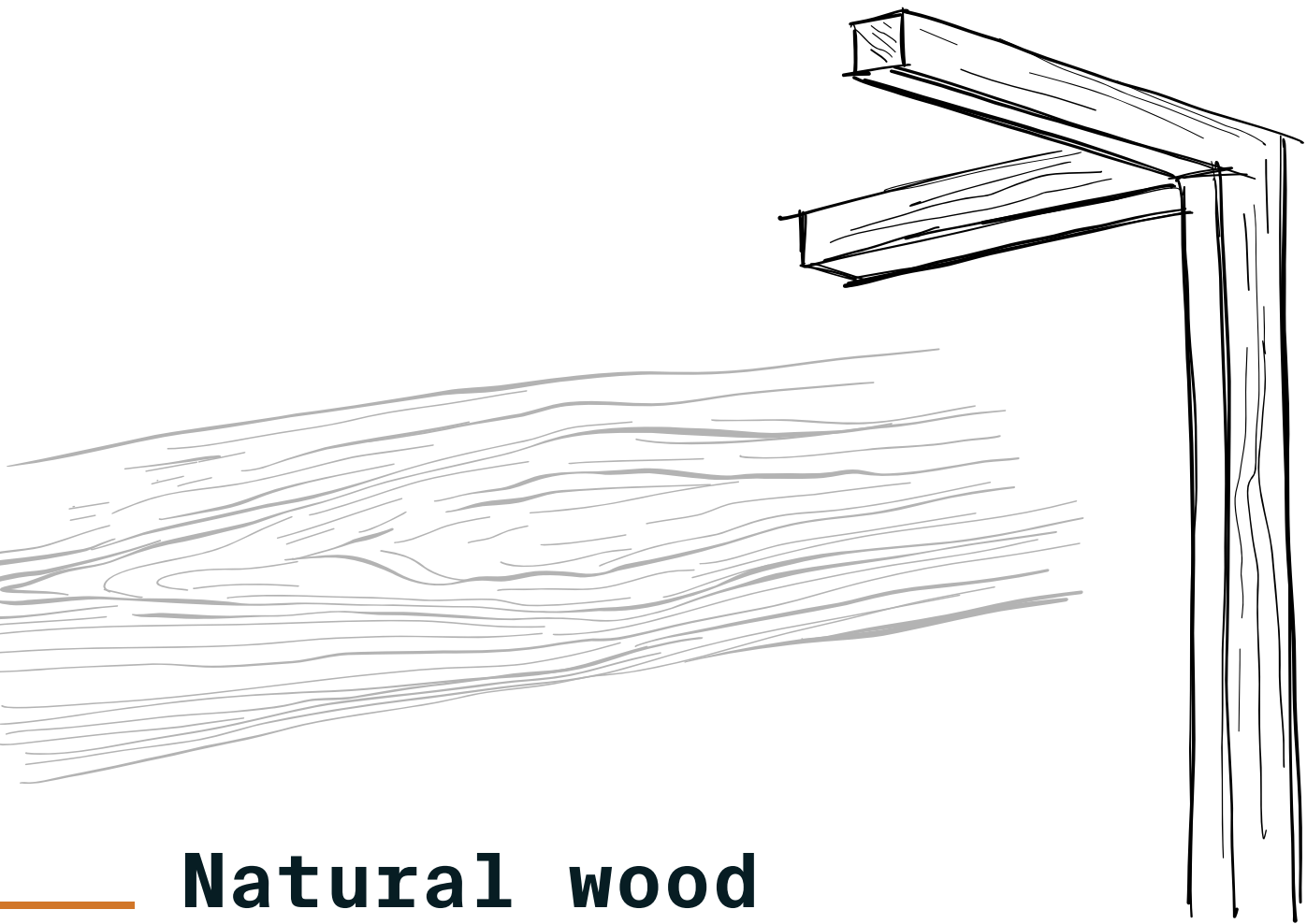


Banyo showcases an artisanal hand-made braided cord shade, which not only generates stunning lighting effects but also embodies sustainability through the utilization of recycled materials.

A custom large-scale fixture becomes the pièce de résistance of any interior design, amplifying its presence and infusing a space with character.







Natural wood

Skillfully crafted new lights for this library reading room project placed a strong emphasis on the exquisite use of natural wood. The lighting fixtures were meticulously tailored to meet the library's precise demands for both aesthetic appeal and uncompromising quality, with the outcome being nothing short of a resounding success. With the careful integration of natural wood, the lighting solutions harmonize perfectly with the surroundings and create a warm and inviting effect.

The Woodlin series encompasses handcrafted linear profiles, crafted exclusively from wood, available in a diverse range of finishes including ash, oak, walnut, black stained, and white stained. This collection seamlessly blends functional lighting with the essence of organic materials.





With this large-scale office building project, there was an unwavering emphasis on the use of natural wood materials. Driven by the building's airy and curvaceous architecture, the goal was to infuse these captivating elements into the very essence of our lighting fixtures' design.

The custom wood pendant lights stand as a testament to our commitment to customization. These lights were meticulously optimized for illuminating display terminals, offering dimmable functionality, adjustable color temperature, and a remarkable quality of light.



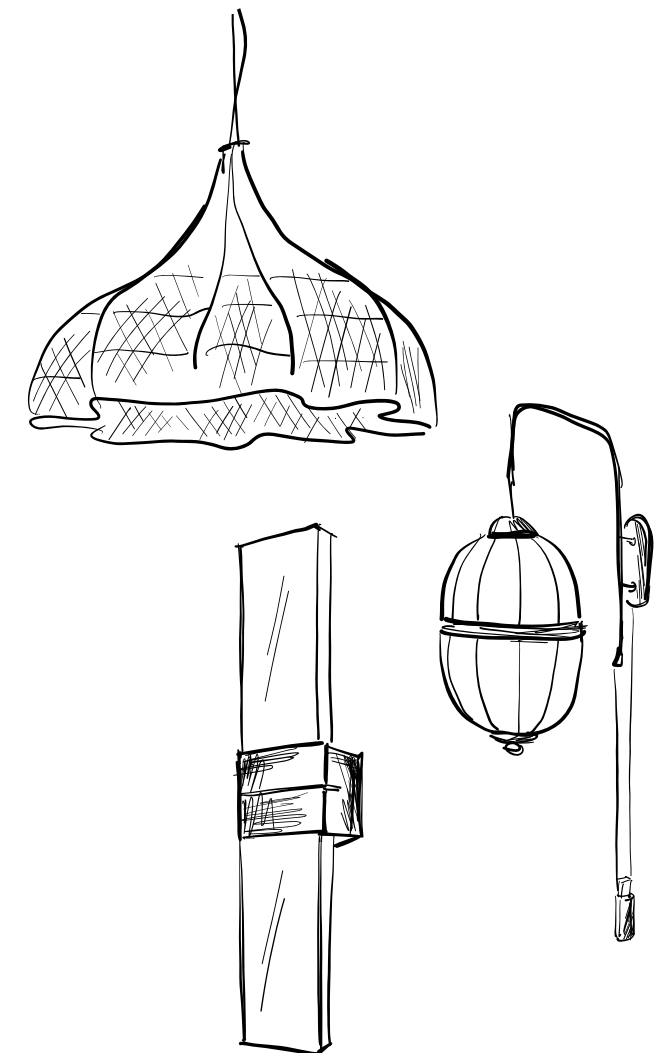
The custom pendant lights have been ingeniously designed to be fully adjustable and modular. This deliberate approach allows for effortless future interior changes, all while maintaining consistency by utilizing the same lighting fixtures.



Explore materials and shapes

Ignite your creativity with the use of custom materials and shapes. From the sleek elegance of brushed metal to the warmth of natural rattan, each element is carefully selected to harmonize with your desired aesthetic.

Glass, with its inherent transparency and luminous properties, adds a touch of enchantment to a custom lighting solution. Its light-diffusing nature creates a mesmerizing interplay of light and shadows, casting an ethereal glow that transforms any space.

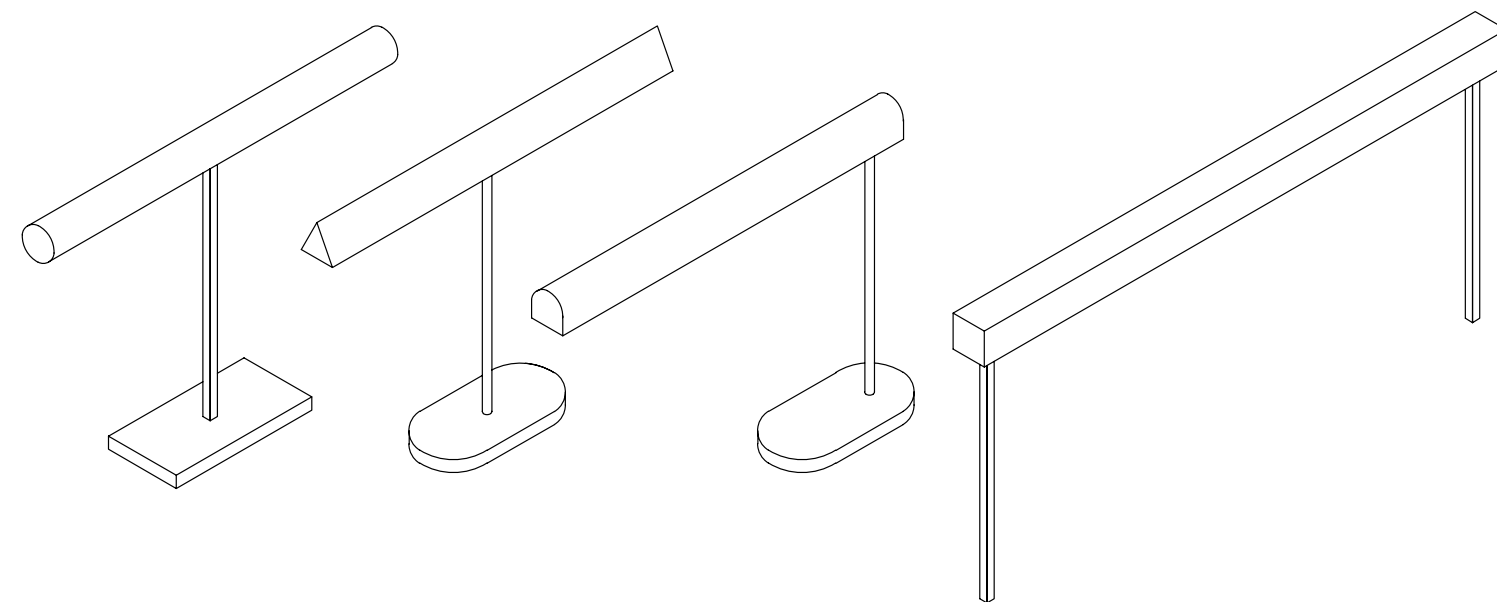
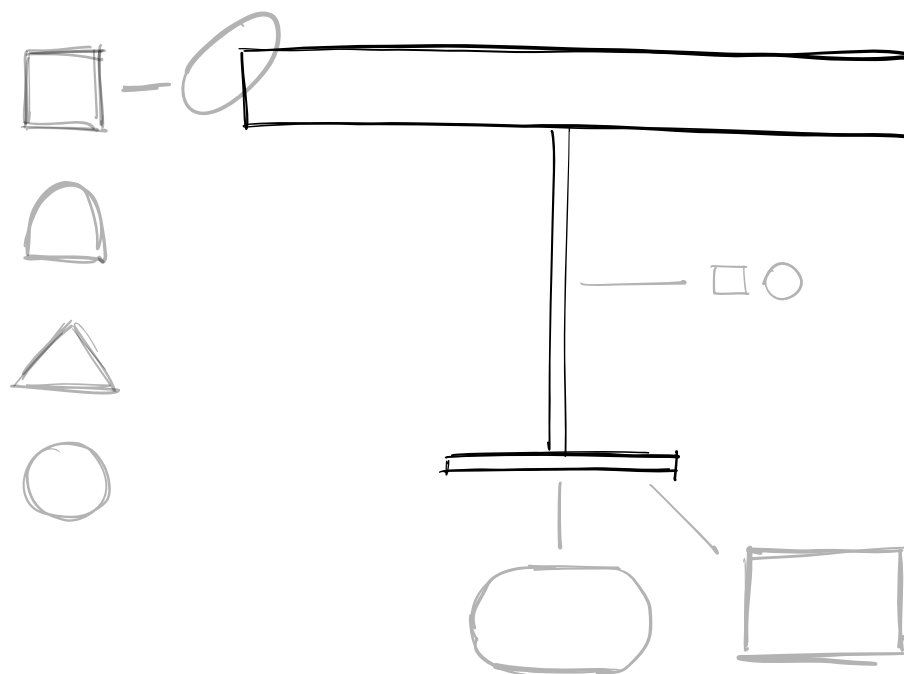


Embrace the freedom to shape light into extraordinary forms, whether it's a striking geometric pattern, an organic-inspired sculpture, or a whimsical interplay of curves and angles.



The enchanting embrace of fabric in a custom lighting solution where warm and soft textures unite, creates a truly inviting ambiance. The gentle glow diffused through exquisite fabrics adds a touch of elegance and coziness to any space, infusing it with a soothing atmosphere that delights the eye.

Create a stunning juxtaposition that elevates an industrial space with the contrasting allure of a custom fabric lighting solution.



Modular design

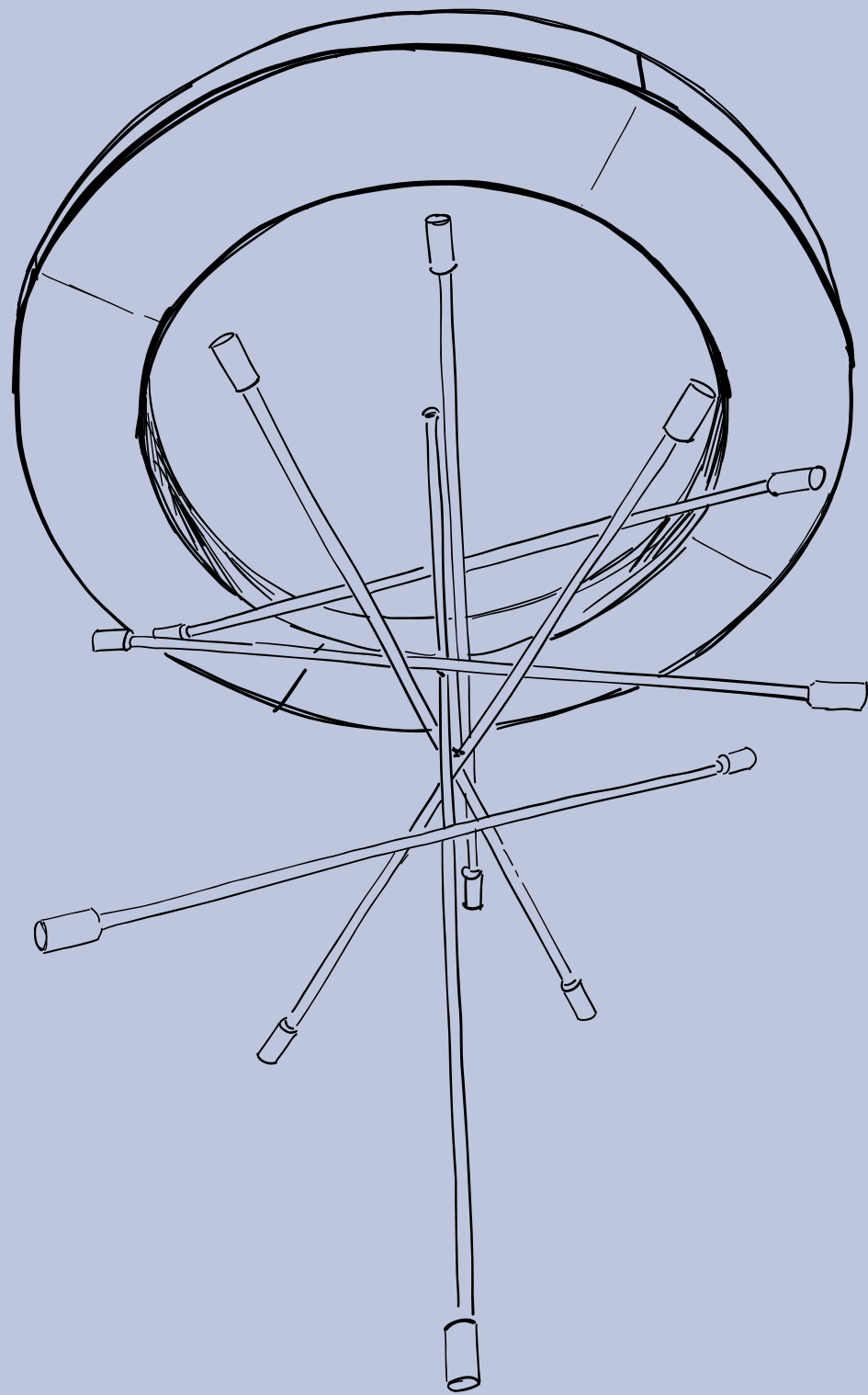
Developed entirely in-house by Studio Zaneen, this exclusive new portable light series represents a bold step forward in the realm of personalized illumination.

At the heart of this new series lies the shade, a focal point that exudes elegance and sophistication, available in a variety of finishing shape options. Crafted from premium aluminum, it embodies a perfect balance of durability and refined aesthetics.

A polycarbonate diffuser, known for its excellent light diffusion properties, has been incorporated to create a soft and even illumination. However, we understand that different projects may have unique requirements, so we remain open to the possibility of utilizing glass diffusers when deemed necessary.

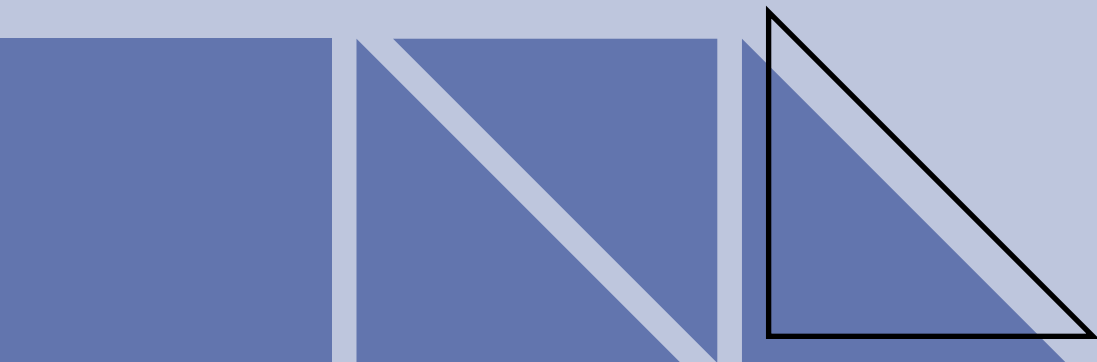


Personalization is a cornerstone of our custom light series. While the standard color options include timeless black and white, we embrace the opportunity to go above and beyond. Through the use of RAL options, we invite you to explore a vast palette of hues, enabling you to achieve a seamless integration with your design scheme and make a truly personalized statement.



Project profile: Auburn University

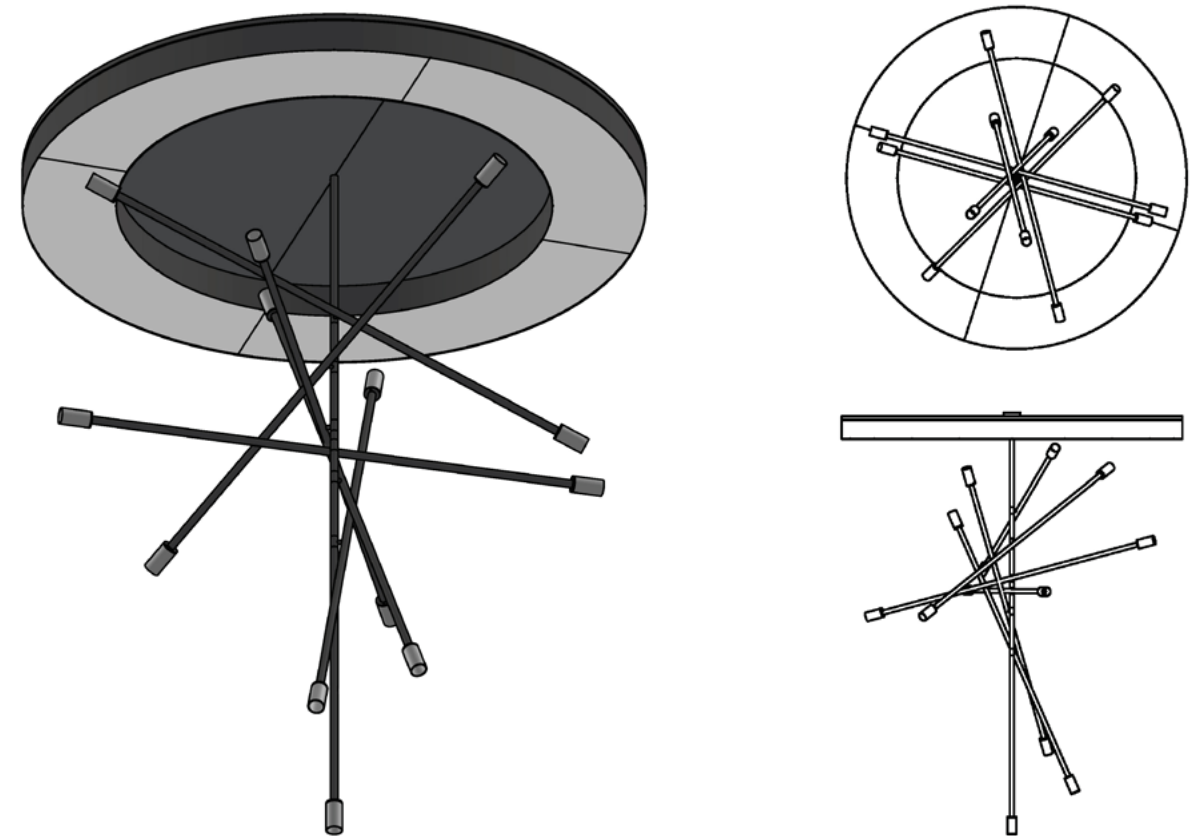
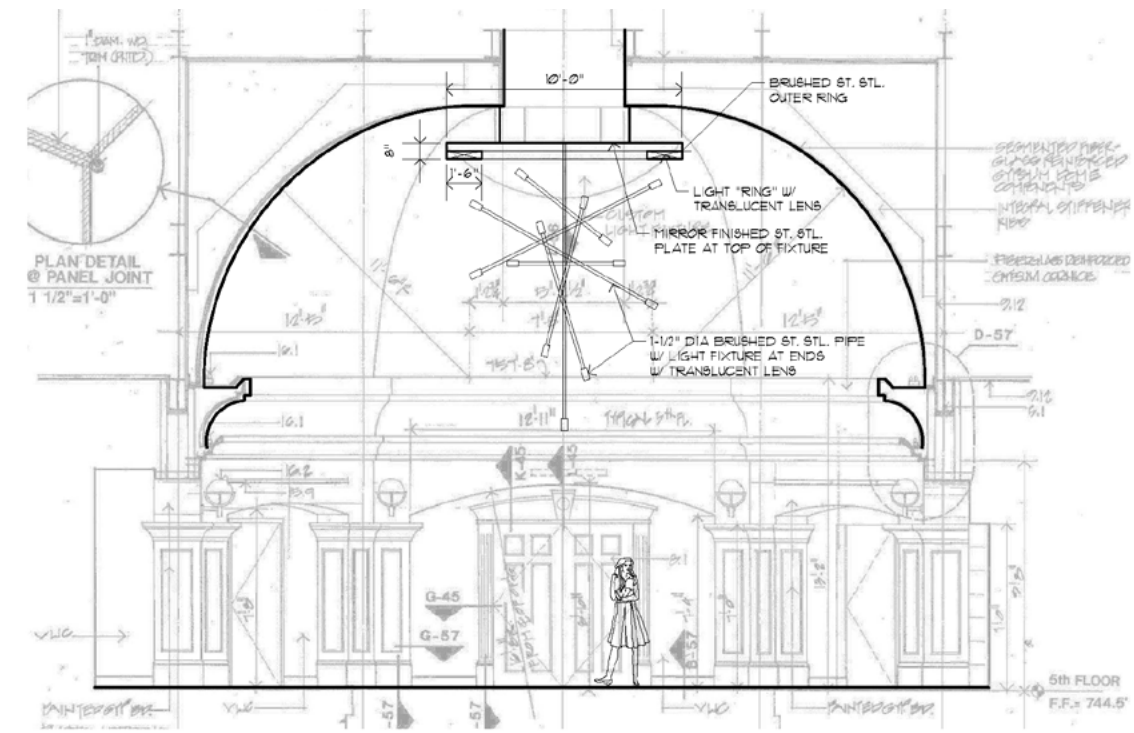
A focal point of the renovation project at Auburn University's Lowder Hall was to modernize the building, replacing outdated styles and paying homage to the architect's design through the installation of a meticulously crafted custom lighting fixture.



From an idea to installation

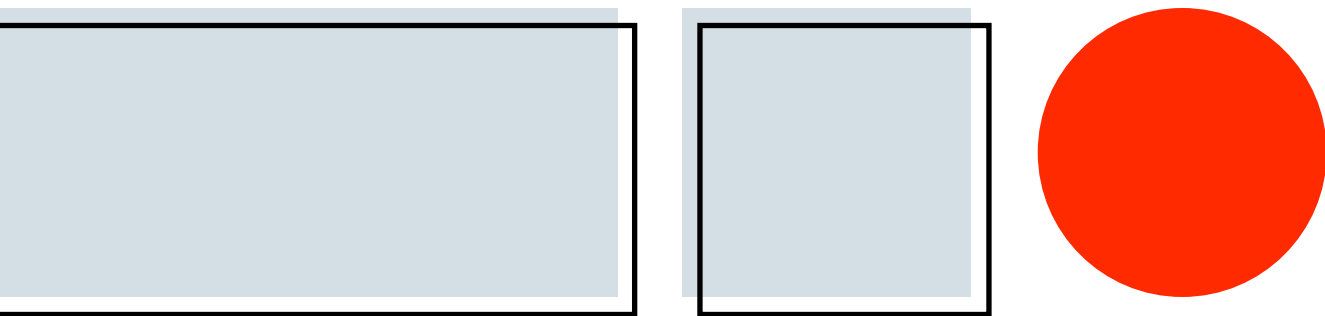
From a mere concept sketch, our team embarked on an extensive journey, crafting detailed drawings and intricate 3D renderings. Through meticulous refinement, we transformed the initial vision into a remarkable reality: a custom fixture that not only fulfilled all requirements but also remained within budgetary constraints.

The end result is a brilliant masterpiece, seamlessly blending functionality and a much-needed modern element, breathing new life into the space.



The 10' by 12' custom chandelier features 6 configurable hanging stems, each lit at the ends by cylindrical glass diffusers and a 10' mirrored back ring placed at the top.





From conceptualization to installation, **Studio Zaneen** offers a comprehensive suite of services to ensure a smooth and hassle-free experience for our valued customers. Our team of experts will work closely with you, leveraging our extensive knowledge and expertise, to develop custom lighting solutions that align with your specific requirements, budget and timeline.

Discover the limitless possibilities of light and explore the transformative impact it can have on your space. Together, let's create an ambiance that captivates, inspires and leaves a lasting impression.

Architectural



Ivela



Letroh



Prolight

Design



Cangini & Tucci



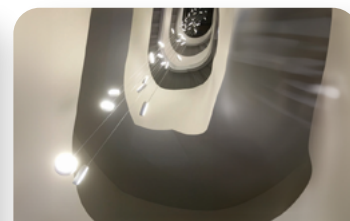
Cini & Nils



Fambuena



Icone



Knikerboker



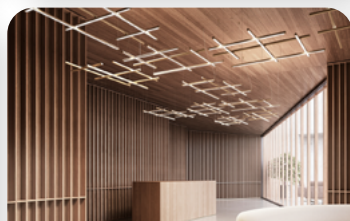
Linea Zero



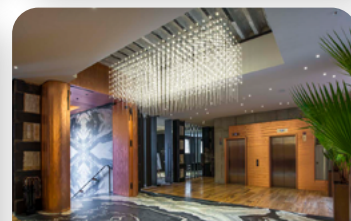
Milan



Ole



Panzeri



Quasar



Tunto



Zaneen

Exterior



Diamante



Platek



Side



Unonovesette

ZANEEN

Zaneen brings together a select group of European manufacturing partners, offering a wide range of distinctive products exclusively available in North America.

zaneen.com

