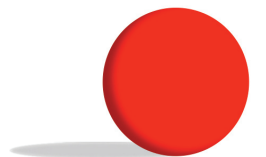
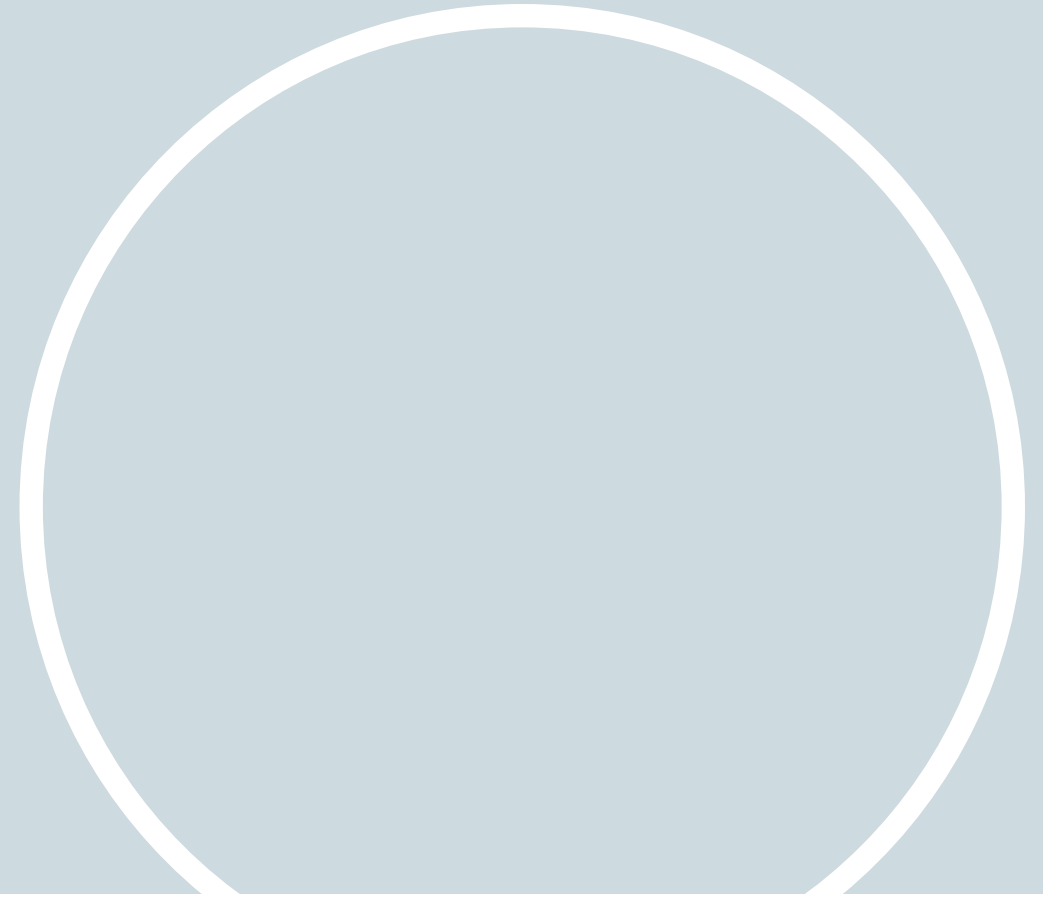


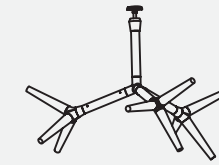
Sparks

System Workbook

Do you need ideas for design configurations?

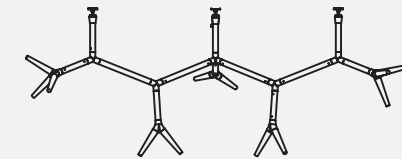


SPARKS MODULAR SYSTEM A
CEILING SURFACE 3-LIGHTHEAD



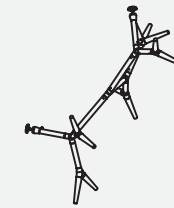
5

SPARKS MODULAR SYSTEM B
CEILING SURFACE 5-LIGHTHEAD



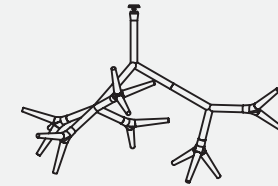
6

SPARKS MODULAR SYSTEM C
CEILING SURFACE 5-LIGHTHEAD



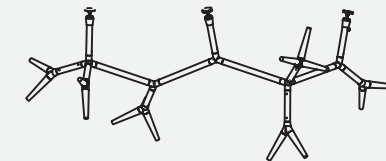
7

SPARKS MODULAR SYSTEM D
CEILING SURFACE 6-LIGHTHEAD



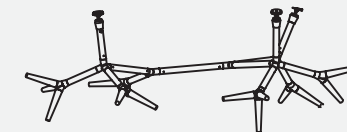
8

SPARKS MODULAR SYSTEM E
CEILING SURFACE 6-LIGHTHEAD



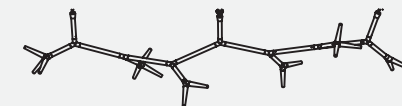
9

SPARKS MODULAR SYSTEM F
CEILING SURFACE 6-LIGHTHEAD



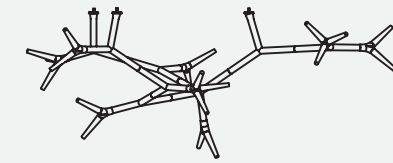
10

SPARKS MODULAR SYSTEM G
CEILING SURFACE 6-LIGHTHEAD



11

SPARKS MODULAR SYSTEM H
CEILING SURFACE 8-LIGHTHEAD



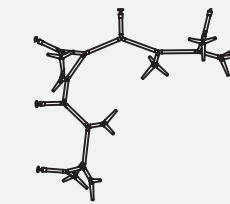
12

SPARKS MODULAR SYSTEM I
CEILING SURFACE 10-LIGHTHEAD



13

SPARKS MODULAR SYSTEM J
CEILING TO WALL SURFACE 8-LIGHTHEAD



14

SPARKS MODULAR SYSTEM K
CEILING SURFACE 11-LIGHTHEAD



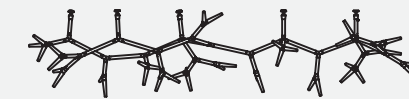
15

SPARKS MODULAR SYSTEM L
CEILING SURFACE 12-LIGHTHEAD



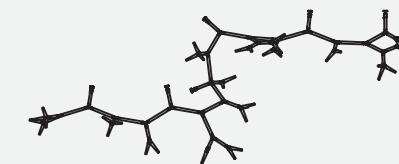
16

SPARKS MODULAR SYSTEM M
CEILING SURFACE 17-LIGHTHEAD



17

SPARKS MODULAR SYSTEM N
CEILING TO WALL SURFACE 8-LIGHTHEAD

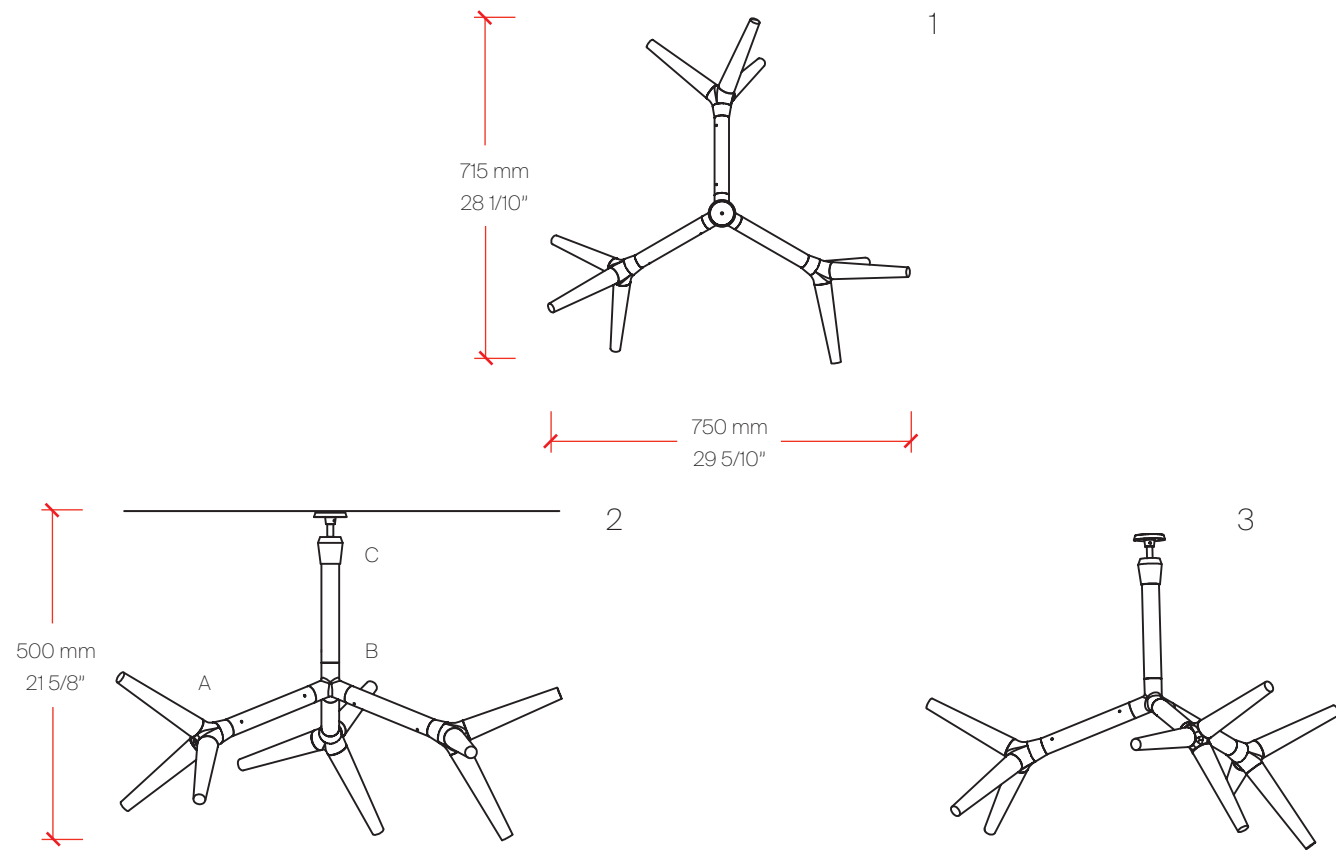


18

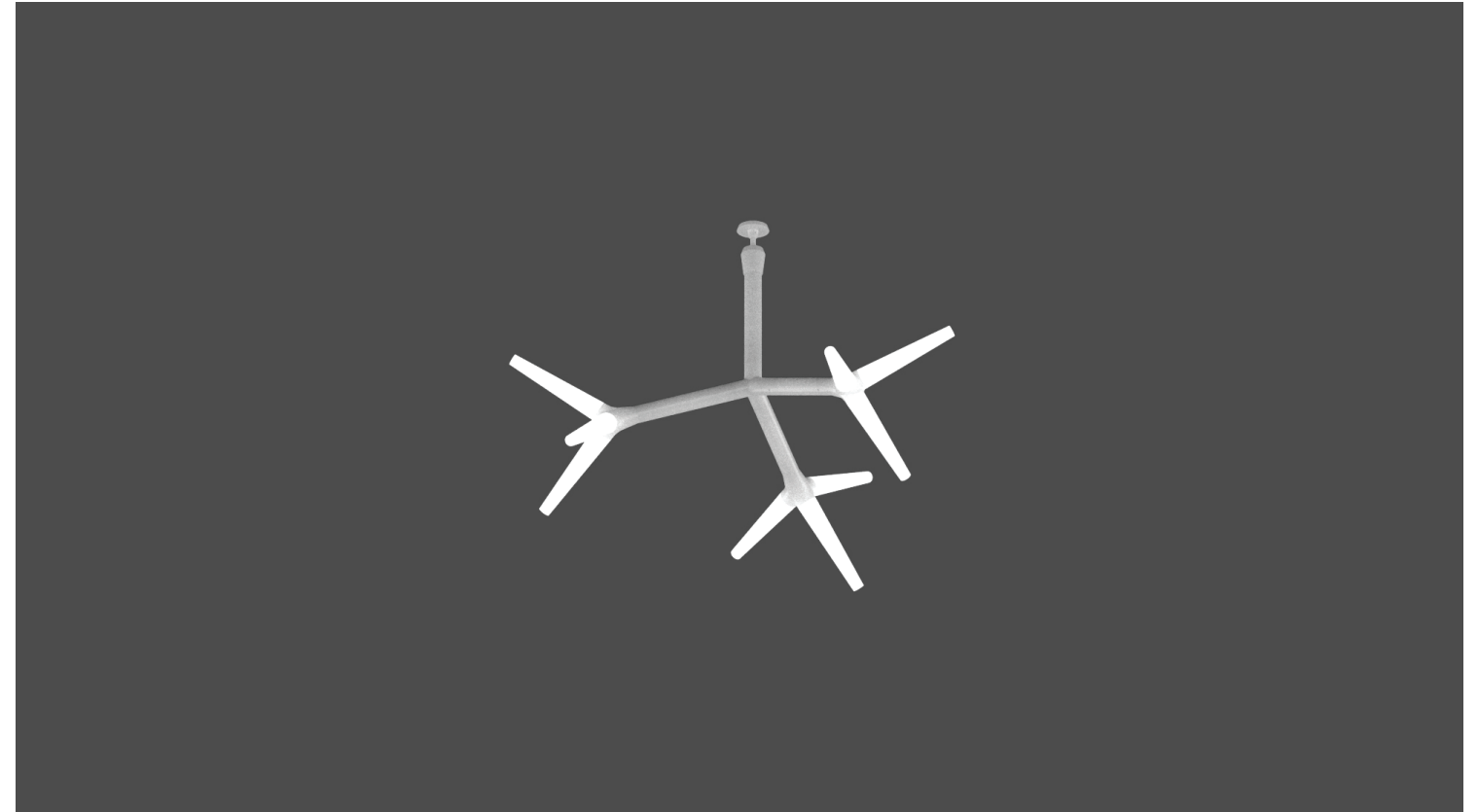
SPARKS MODULAR SYSTEM A

CEILING SURFACE 3-LIGHTHEAD

CEILING SURFACE 3-LIGHTHEAD



1. Top View | 2. Side View | 3. Isometric View



Bill of Materials

Item	Model #	Qty	Description
A	D109011-WHI	3	Triple Lighthead LED - 1 x 4.6W LED - 2700K - 326lm - White
B	D109014-WHI	1	X Connector - 314mm / 12 3/8" x 360mm 14 3/16" - White
C	D109015-WHI	1	Wall/Ceiling Connector with Cable - 226mm / 1 3/16" x 30mm / 8 7/8" - White
D	D109018-WHI	1	LED Driver - 24V - Max 100W - 0-10V dimming - White With Metal Enclosure

* Available in polished aluminium - suffix "PAL"

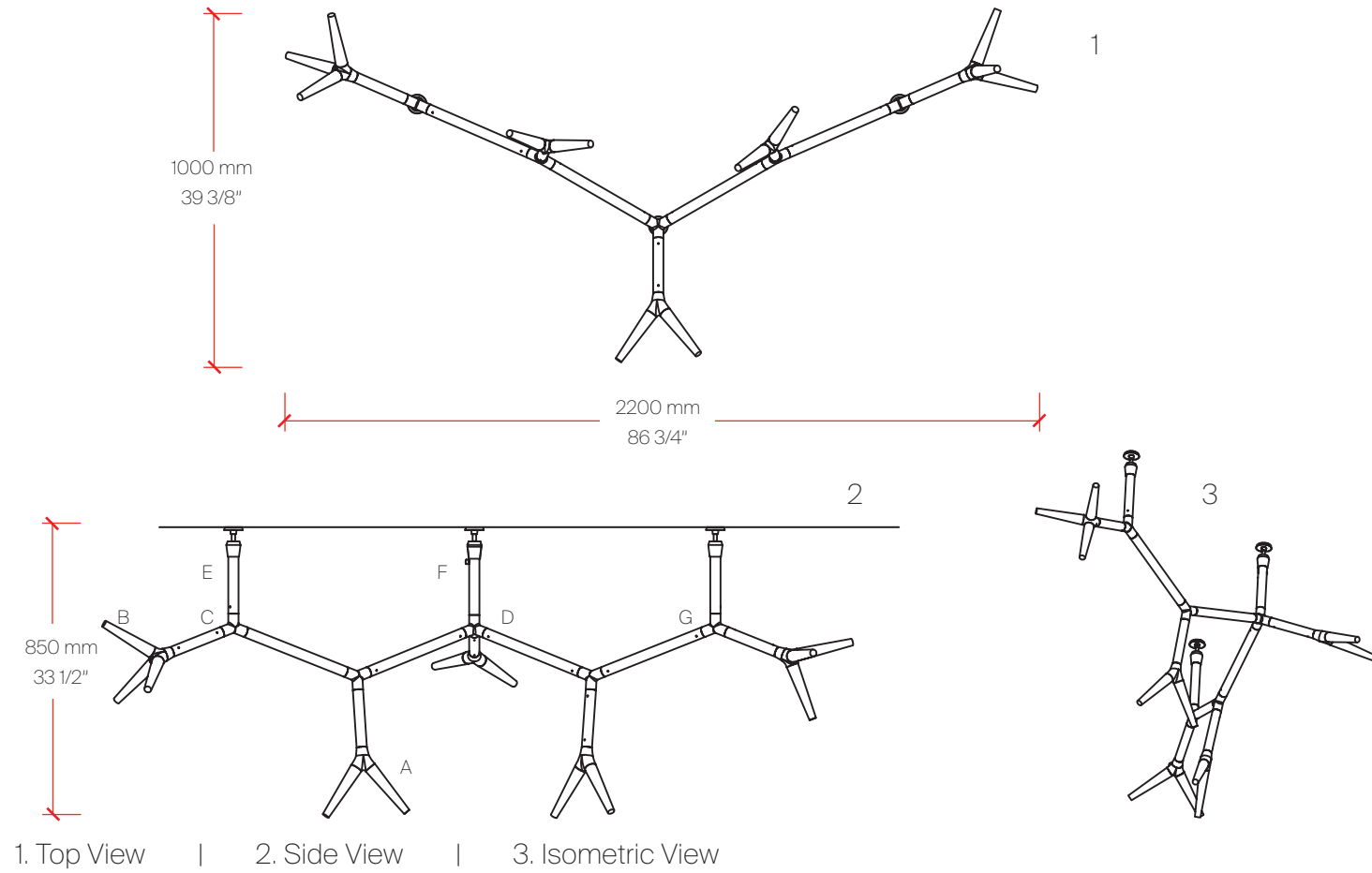
* Requires remote driver with enclosure

Zaneen Group Inc. © 2025, T 1800-388-3382, F 416-247-9319, www.zaneen.com

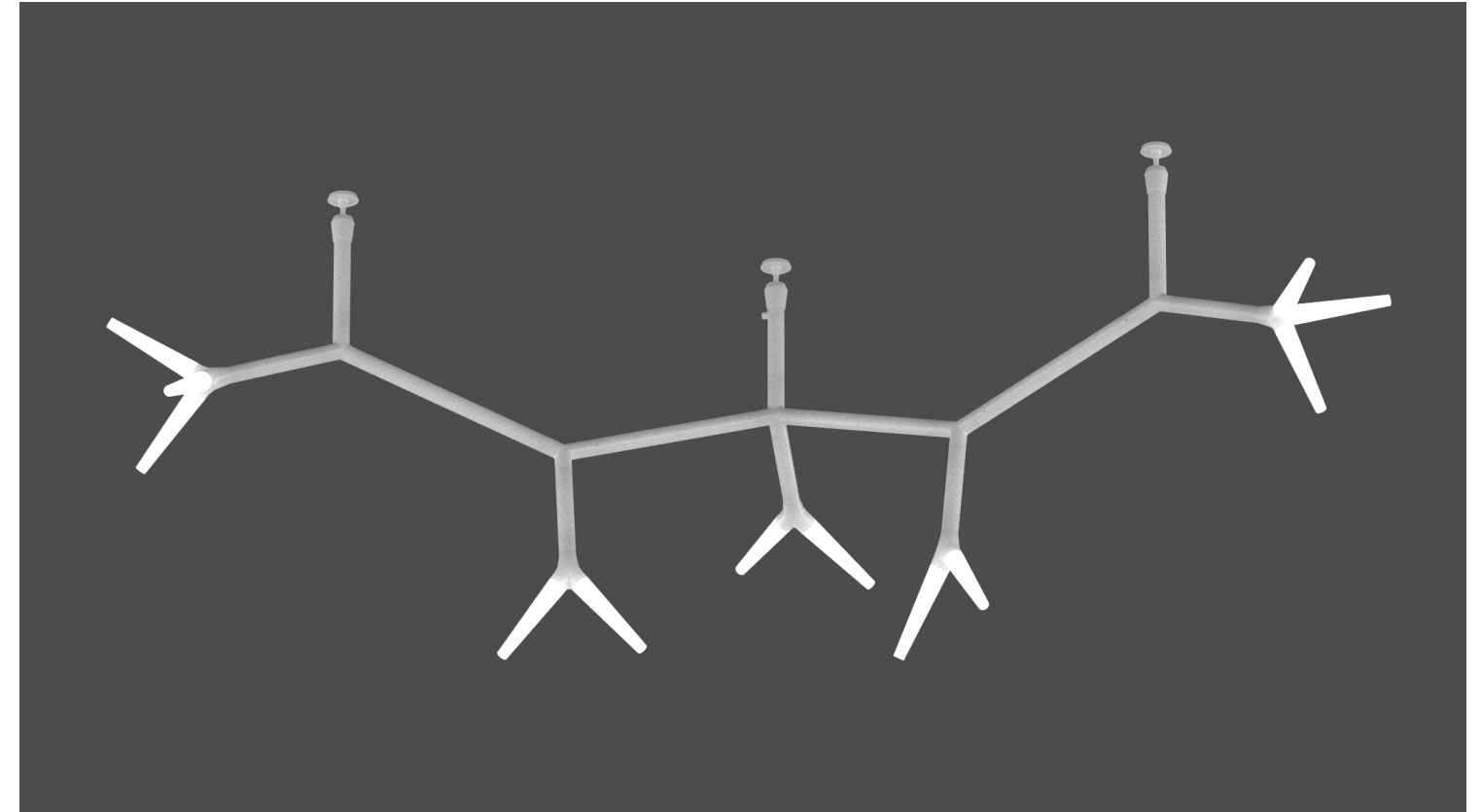
In a constant effort to supply the best product, we reserve the right to change specifications or materials without notice. The most recent specification sheets are found at zaneen.com

SPARKS MODULAR SYSTEM B

CEILING SURFACE 5-LIGHTHEAD



CEILING SURFACE 5-LIGHTHEAD



Bill of Materials

Item	Model #	Qty	Description
A	D109010-WHI	3	Double Lighthouse LED - 1 x 4.6W LED - 2700K - 376lm - White
B	D109011-WHI	2	Triple Lighthouse LED - 1 x 4.6W LED - 2700K - 326lm - White
C	D109012-WHI	4	T Connector - 120mm / 4 3/4" x 140mm 5 1/2" - 2 x 110°, 1 x 140° - White
D	D109014-WHI	1	X Connector - 314mm / 12 3/8" x 360mm 14 3/16" - White
E	D109015-WHI	1	Wall/Ceiling Connector with Cable - 226mm / 1 3/16" x 30mm / 8 7/8" - White
F	D109016-WHI	2	Wall/Ceiling Connector - 226mm 1 3/16" x 30mm / 8 7/8" - White
G	D109017-WHI	4	Tube - 35cm / 13 3/4" - White
H	D109018-WHI	1	LED Driver - 24V - Max 100W - 0-10V dimming - White With Metal Enclosure

* Available in polished aluminium - suffix "PAL"

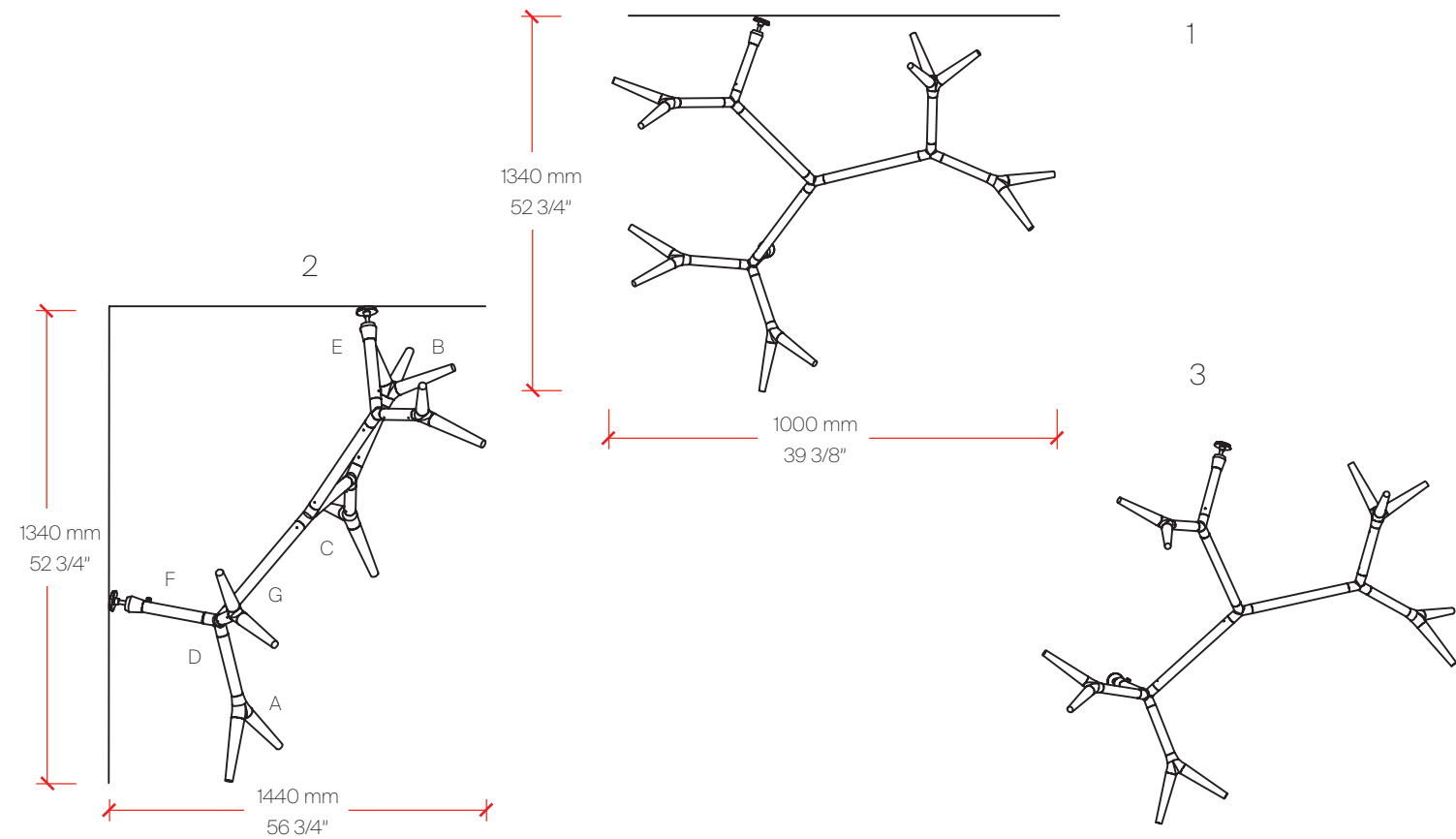
* Requires remote driver with enclosure

Zaneen Group Inc. © 2025, T 1800-388-3382, F 416-247-9319, www.zaneen.com

In a constant effort to supply the best product, we reserve the right to change specifications or materials without notice. The most recent specification sheets are found at zaneen.com

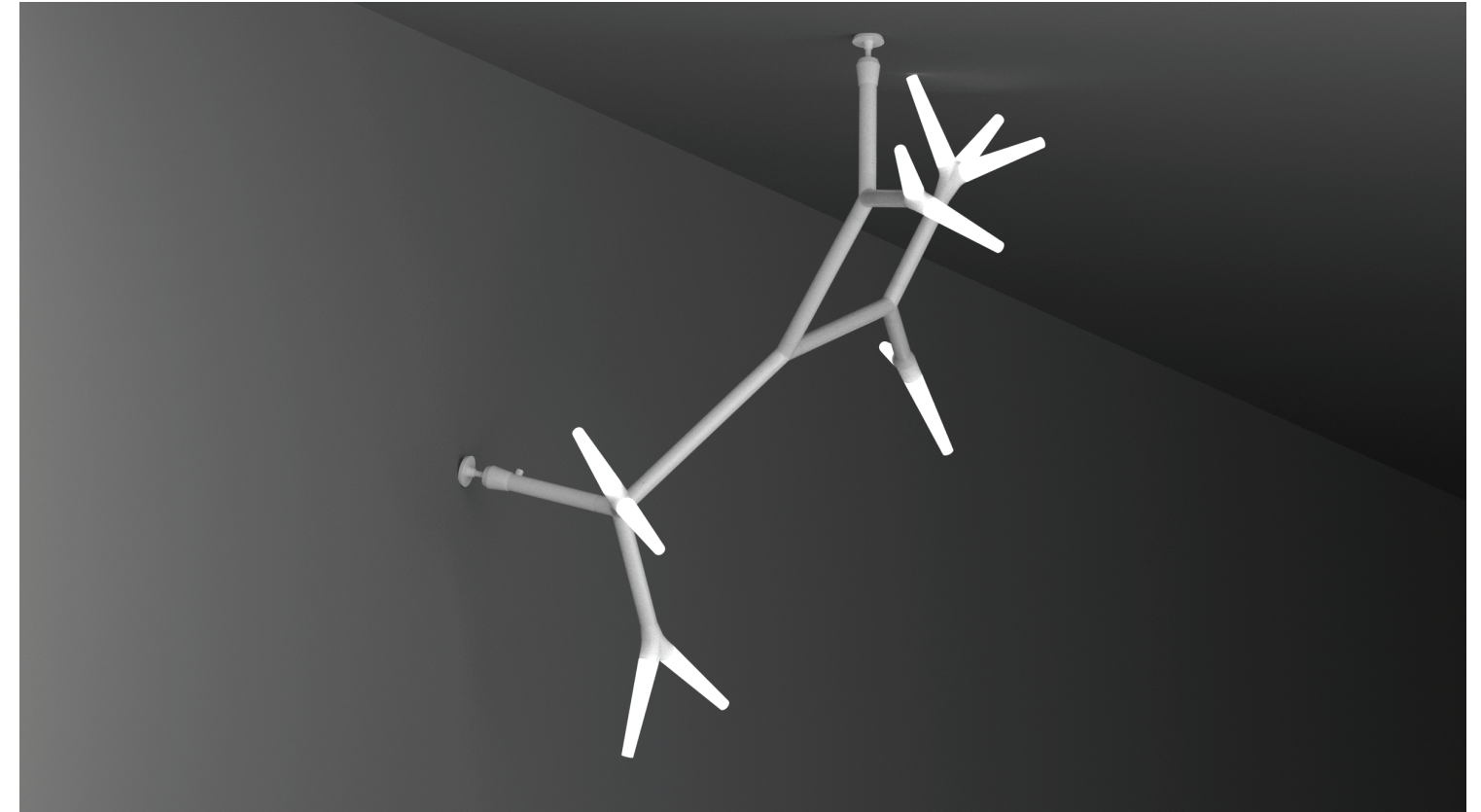
SPARKS MODULAR SYSTEM C

CEILING SURFACE 5-LIGHTHEAD



1. Top View | 2. Side View | 3. Isometric View

CEILING SURFACE 5-LIGHTHEAD



Bill of Materials

Item	Model #	Qty	Description
A	D109010-WHI	4	Double Lighthouse LED - 1 x 4.6W LED - 2700K - 376lm - White
B	D109011-WHI	1	Triple Lighthouse LED - 1 x 4.6W LED - 2700K - 326lm - White
C	D109012-WHI	3	T Connector - 120mm / 4 3/4" x 140mm 5 1/2" - 2 x 110°, 1 x 140° - White
D	D109014-WHI	1	X Connector - 314mm / 12 3/8" x 360mm 14 3/16" - White
E	D109015-WHI	1	Wall/Ceiling Connector with Cable - 226mm / 1 3/16" x 30mm / 8 7/8" - White
F	D109016-WHI	1	Wall/Ceiling Connector - 226mm 1 3/16" x 30mm / 8 7/8" - White
G	D109017-WHI	3	Tube - 35cm / 13 3/4" - White
H	D109018-WHI	1	LED Driver - 24V - Max 100W - 0-10V dimming - White With Metal Enclosure

* Available in polished aluminium - suffix "PAL"

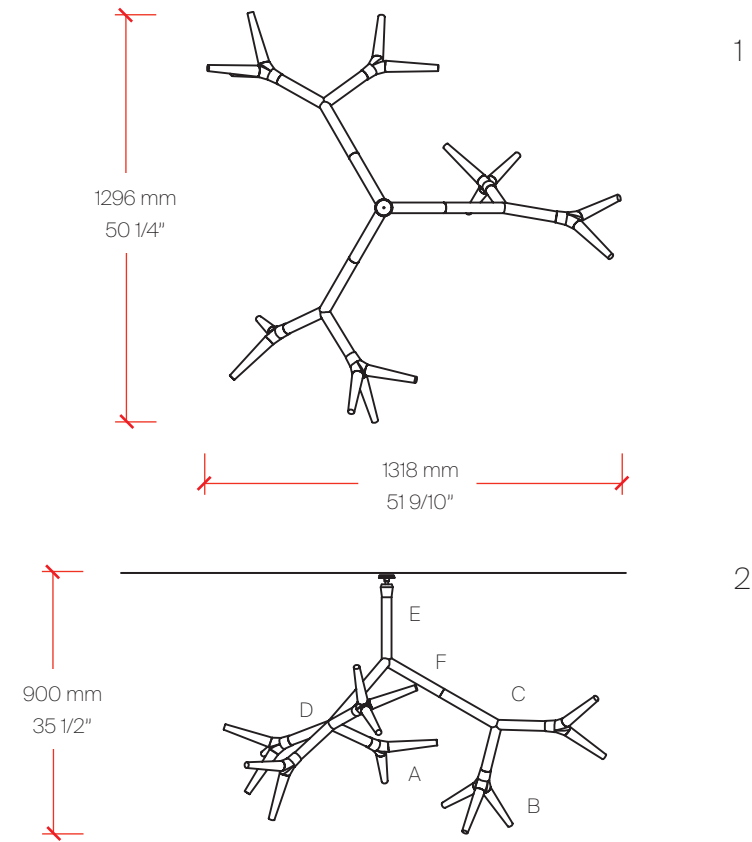
* Requires remote driver with enclosure

Zaneen Group Inc. © 2025, T 1800-388-3382, F 416-247-9319, www.zaneen.com

In a constant effort to supply the best product, we reserve the right to change specifications or materials without notice. The most recent specification sheets are found at zaneen.com

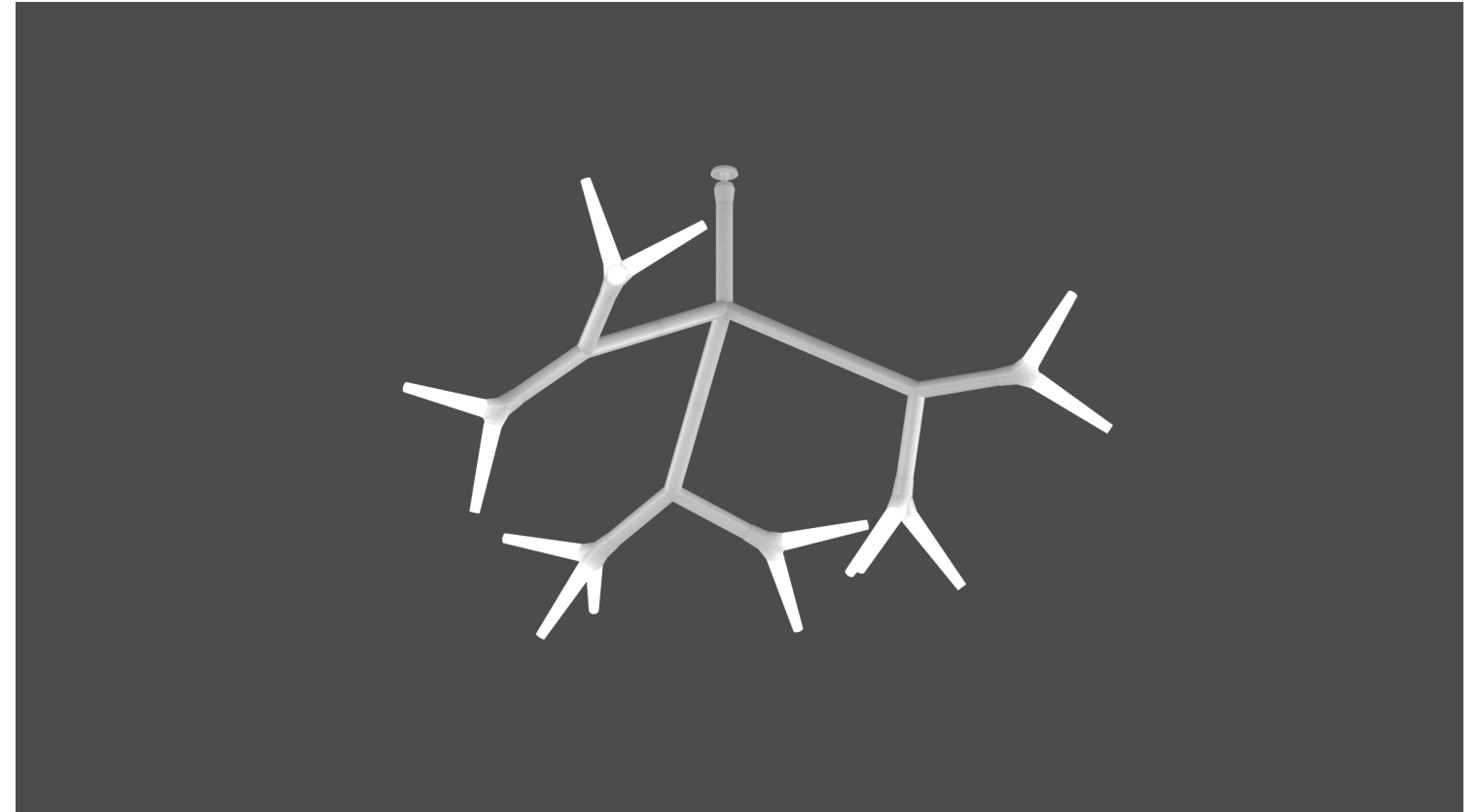
SPARKS MODULAR SYSTEM D

CEILING SURFACE 6-LIGHTHEAD



1. Top View | 2. Side View

CEILING SURFACE 6-LIGHTHEAD



Bill of Materials

Item	Model #	Qty	Description
A	D109010-WHI	3	Double Lighthouse LED - 1 x 4.6W LED - 2700K - 376lm - White
B	D109011-WHI	3	Triple Lighthouse LED - 1 x 4.6W LED - 2700K - 326lm - White
C	D109012-WHI	3	T Connector - 120mm / 4 3/4" x 140mm 5 1/2" - 2 x 110°, 1 x 140° - White
D	D109014-WHI	1	X Connector - 314mm / 12 3/8" x 360mm 14 3/16" - White
E	D109015-WHI	1	Wall/Ceiling Connector with Cable - 226mm / 1 3/16" x 30mm / 8 7/8" - White
F	D109017-WHI	3	Tube - 35cm / 13 3/4" - White
G	D109018-WHI	1	LED Driver - 24V - Max 100W - 0-10V dimming - White With Metal Enclosure

* Available in polished aluminium - suffix "PAL"

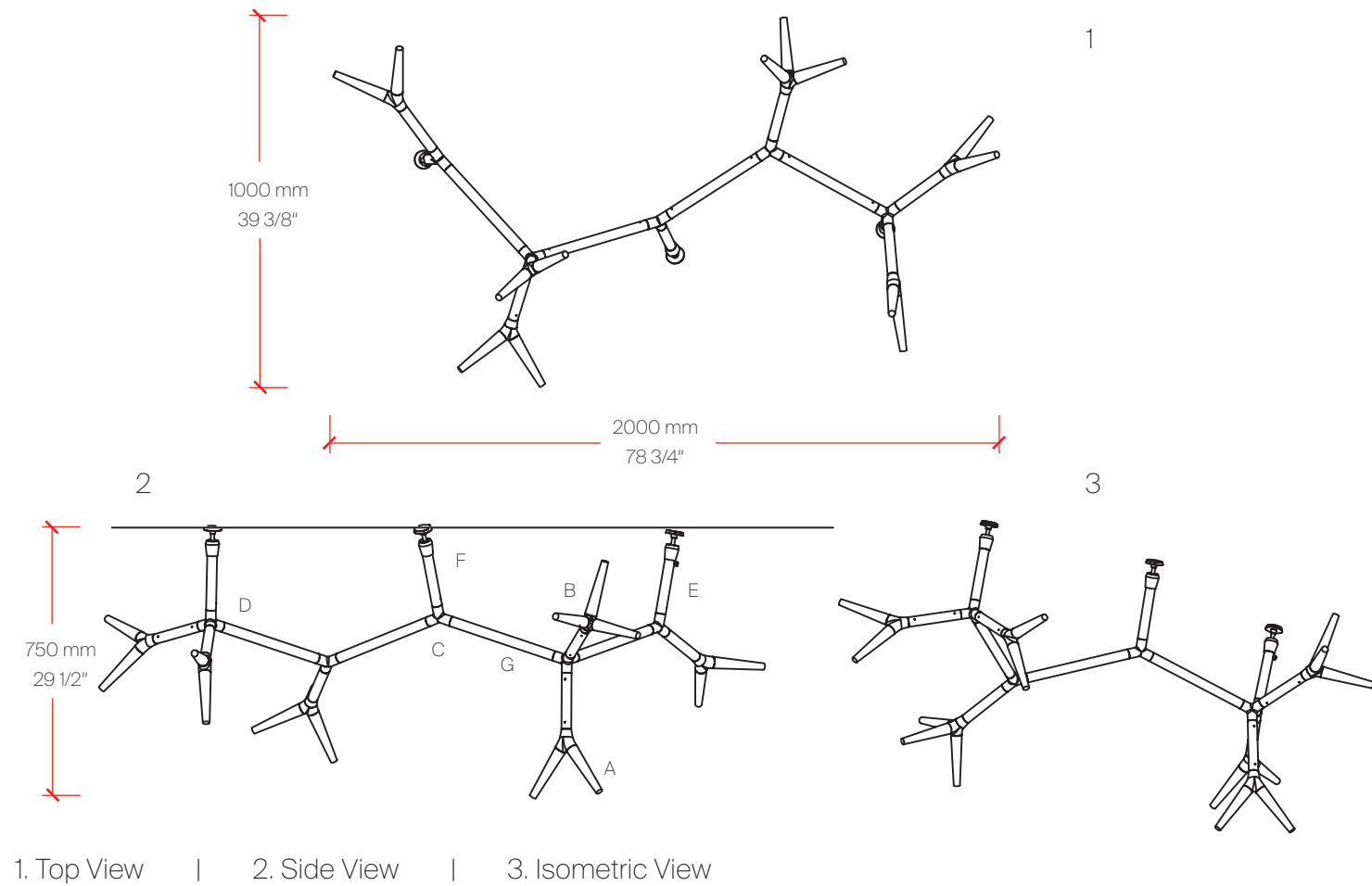
* Requires remote driver with enclosure

Zaneen Group Inc. © 2025, T 1800-388-3382, F 416-247-9319, www.zaneen.com

In a constant effort to supply the best product, we reserve the right to change specifications or materials without notice. The most recent specification sheets are found at zaneen.com

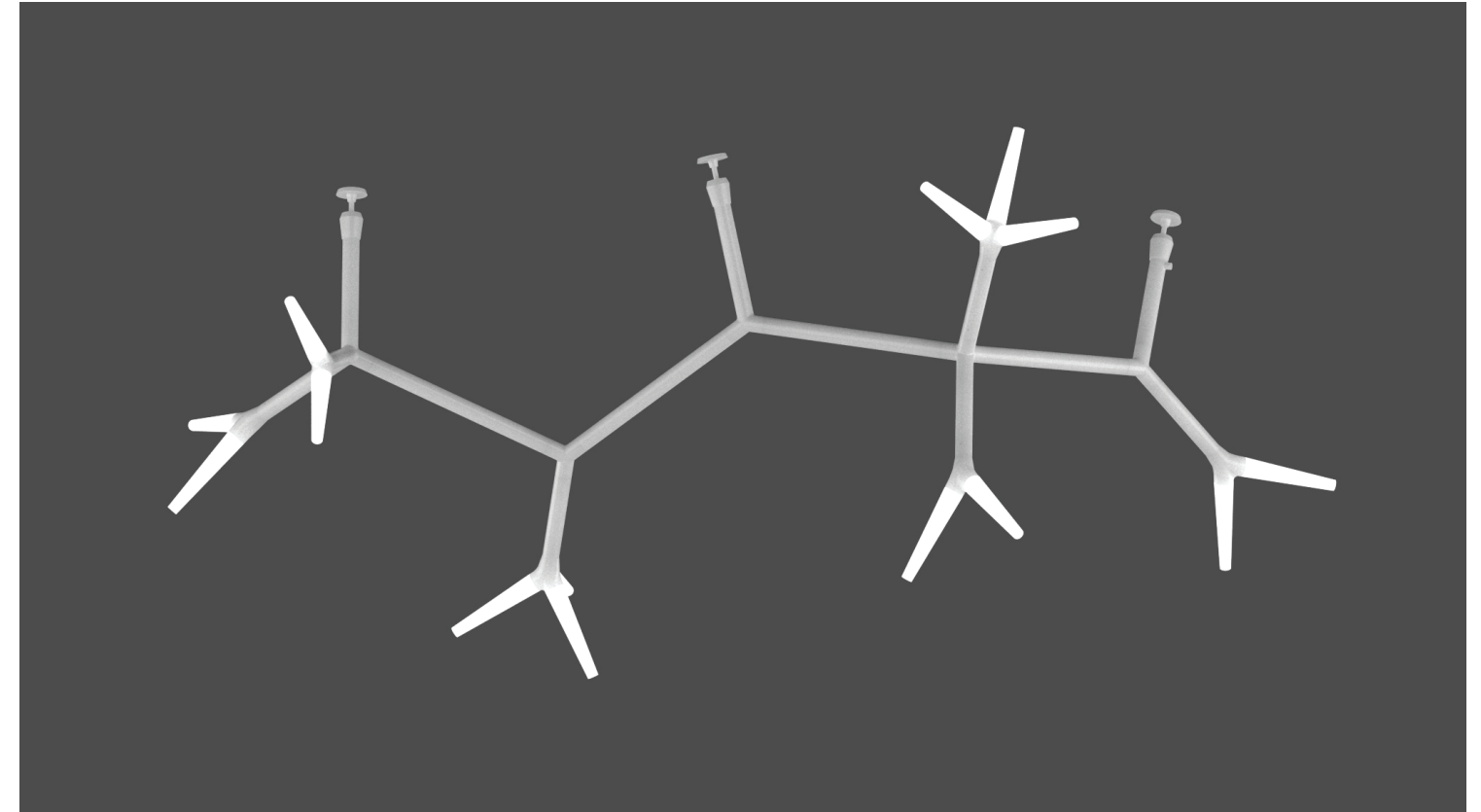
SPARKS MODULAR SYSTEM E

CEILING SURFACE 6-LIGHTHEAD



1. Top View | 2. Side View | 3. Isometric View

CEILING SURFACE 6-LIGHTHEAD



Bill of Materials

Item	Model #	Qty	Description
A	D109010-WHI	4	Double Lighthouse LED - 1 x 4.6W LED - 2700K - 376lm - White
B	D109011-WHI	2	Triple Lighthouse LED - 1 x 4.6W LED - 2700K - 326lm - White
C	D109012-WHI	3	T Connector - 120mm / 4 3/4" x 140mm 5 1/2" - 2 x 110°, 1 x 140° - White
D	D109014-WHI	2	X Connector - 314mm / 12 3/8" x 360mm 14 3/16" - White
E	D109015-WHI	1	Wall/Ceiling Connector with Cable - 226mm / 1 3/16" x 30mm / 8 7/8" - White
F	D109016-WHI	2	Wall/Ceiling Connector - 226mm 1 3/16" x 30mm / 8 7/8" - White
G	D109017-WHI	4	Tube - 35cm / 13 3/4" - White
H	D109018-WHI	1	LED Driver - 24V - Max 100W - 0-10V dimming - White With Metal Enclosure

* Available in polished aluminium - suffix "PAL"

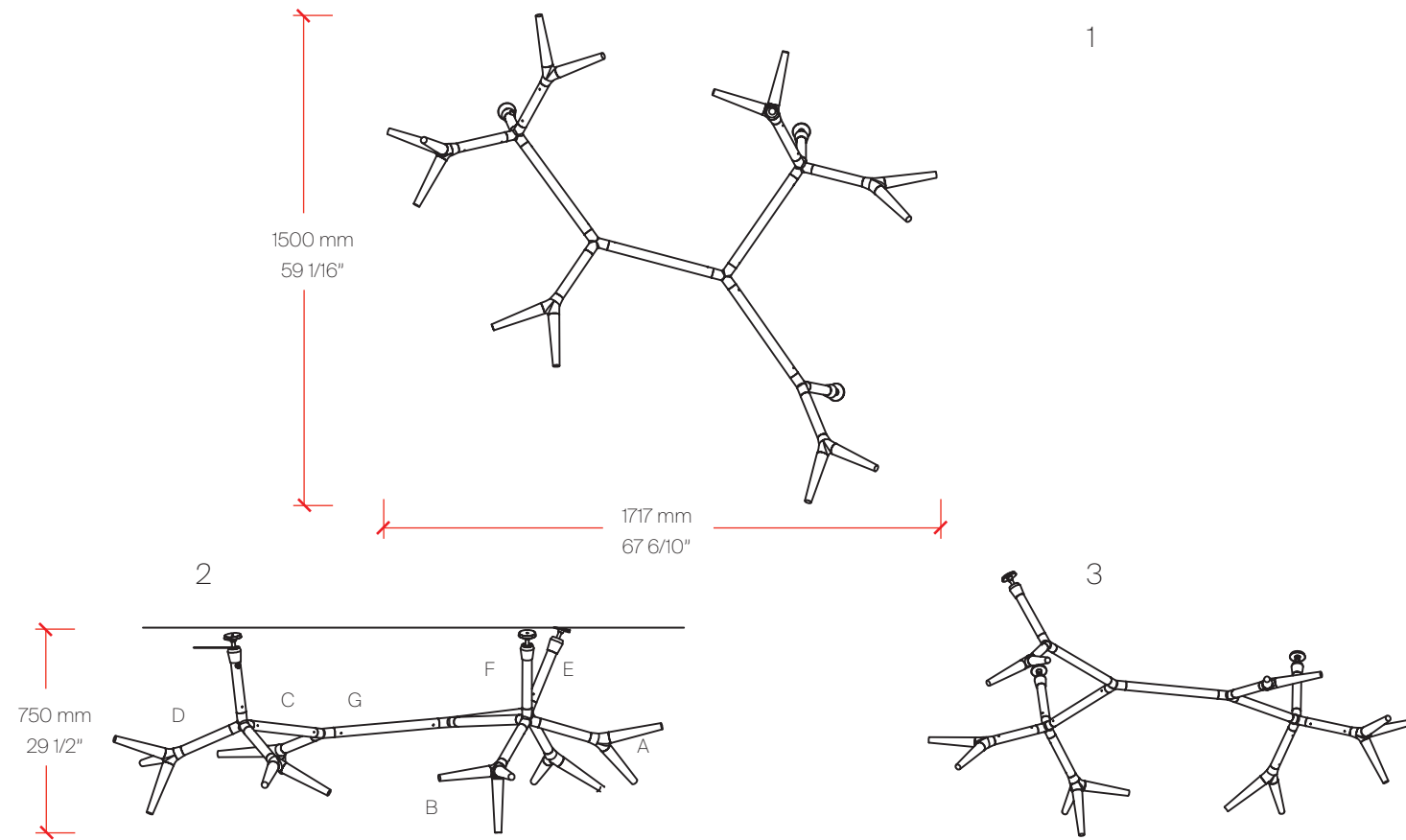
* Requires remote driver with enclosure

Zaneen Group Inc. © 2025, T 1800-388-3382, F 416-247-9319, www.zaneen.com

In a constant effort to supply the best product, we reserve the right to change specifications or materials without notice. The most recent specification sheets are found at zaneen.com

SPARKS MODULAR SYSTEM F

CEILING SURFACE 6-LIGHTHEAD



1. Top View | 2. Side View | 3. Isometric View

Bill of Materials

Item	Model #	Qty	Description
A	D109010-WHI	4	Double Lighthouse LED - 1 x 4.6W LED - 2700K - 376lm - White
B	D109011-WHI	2	Triple Lighthouse LED - 1 x 4.6W LED - 2700K - 326lm - White
C	D109012-WHI	3	T Connector - 120mm / 4 3/4" x 140mm 5 1/2" - 2 x 110°, 1 x 140° - White
D	D109014-WHI	2	X Connector - 314mm / 12 3/8" x 360mm 14 3/16" - White
E	D109015-WHI	1	Wall/Ceiling Connector with Cable - 226mm / 1 3/16" x 30mm / 8 7/8" - White
F	D109016-WHI	2	Wall/Ceiling Connector - 226mm 1 3/16"x 30mm / 8 7/8" - White
G	D109017-WHI	4	Tube - 35cm / 13 3/4" - White
H	D109018-WHI	1	LED Driver - 24V - Max 100W - 0-10V dimming - White With Metal Enclosure

* Available in polished aluminium - suffix "PAL"

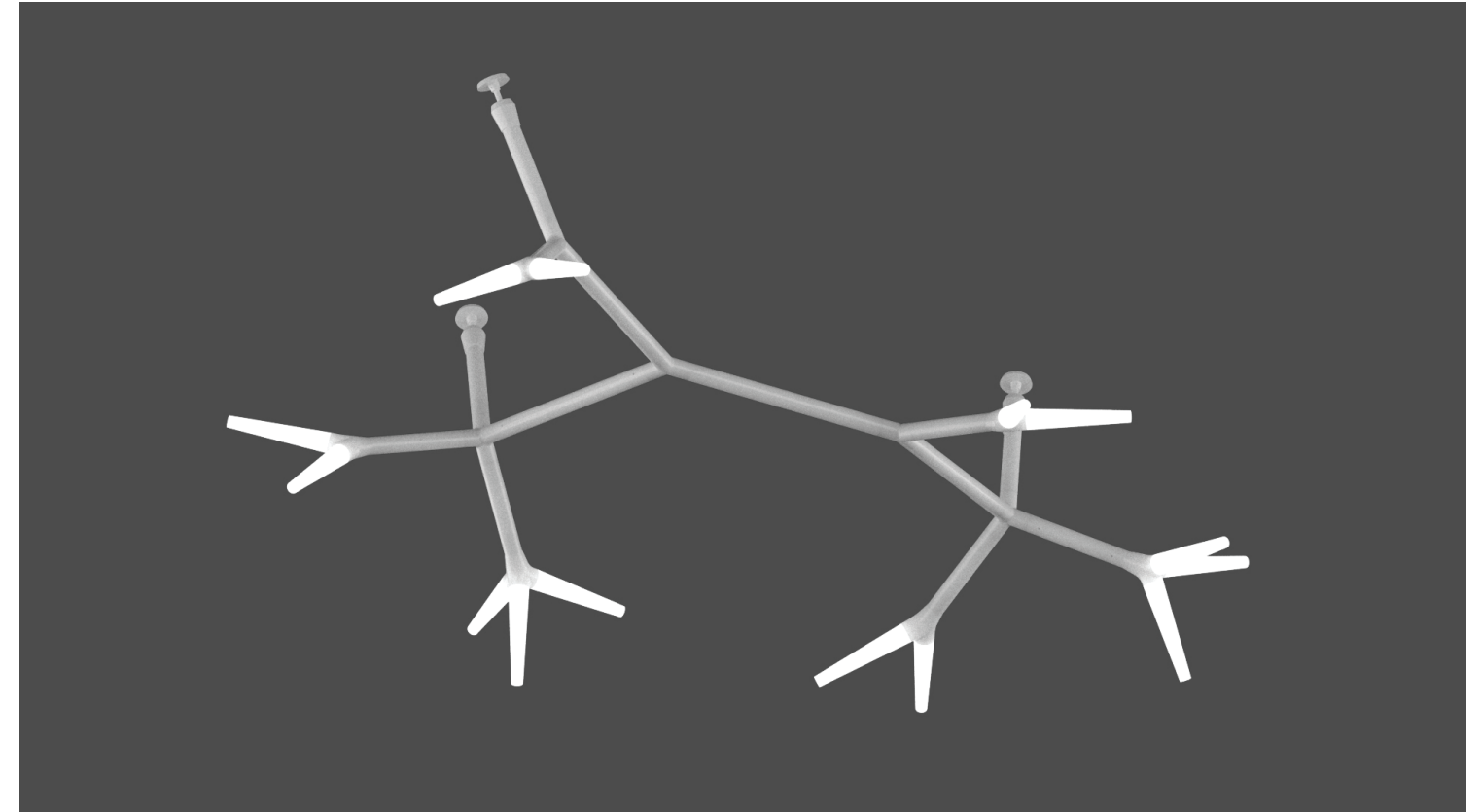
* Requires remote driver with enclosure

Zaneen Group Inc. © 2025, T 1800-388-3382, F 416-247-9319, www.zaneen.com

In a constant effort to supply the best product, we reserve the right to change specifications or materials without notice. The most recent specification sheets are found at zaneen.com

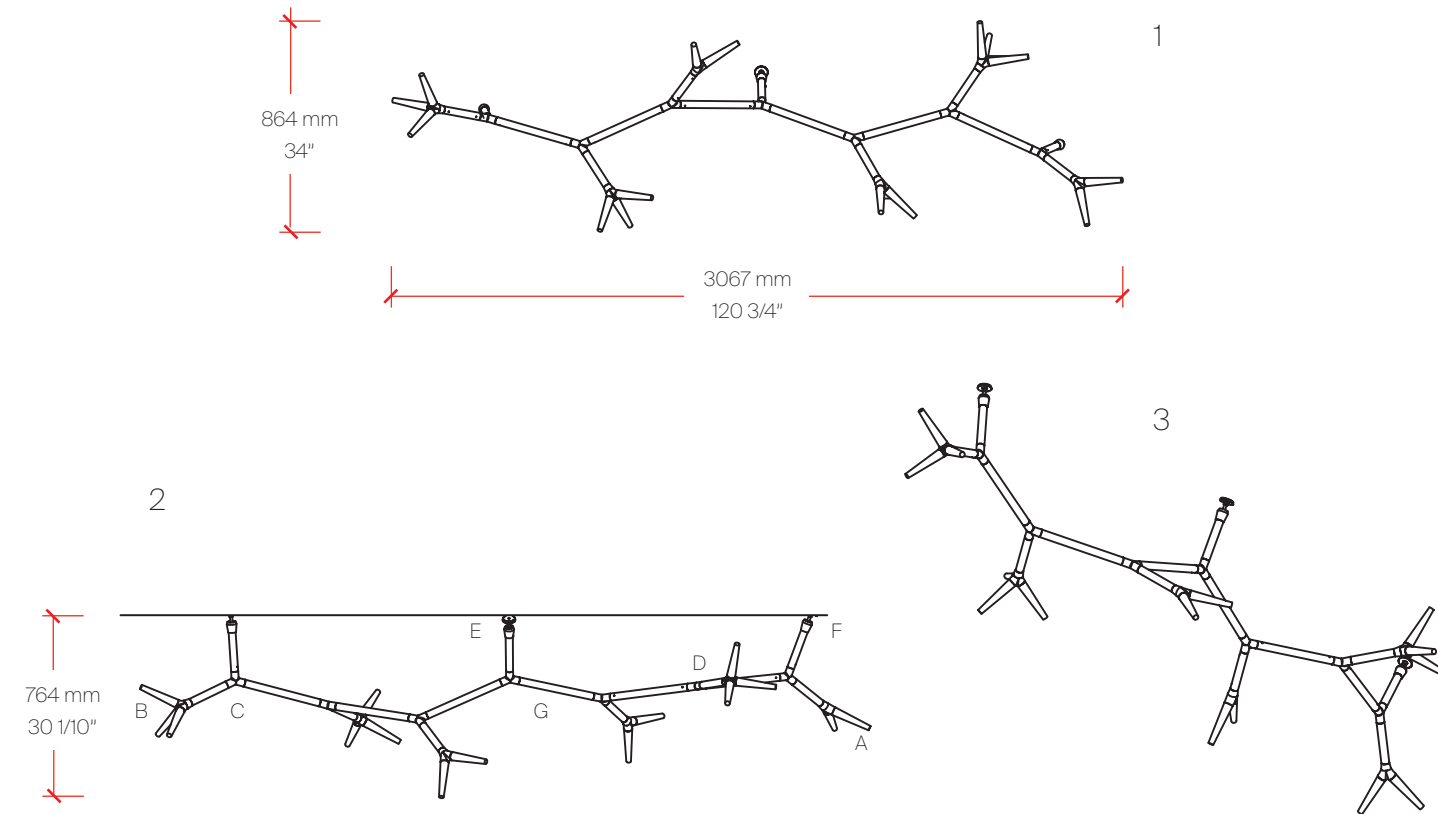
SPARKS MODULAR SYSTEM F

CEILING SURFACE 6-LIGHTHEAD



SPARKS MODULAR SYSTEM G

CEILING SURFACE 6-LIGHTHEAD



1. Top View | 2. Side View | 3. Isometric View

Bill of Materials

Item	Model #	Qty	Description
A	D109010-WHI	3	Double Lighthouse LED - 1 x 4.6W LED - 2700K - 376lm - White
B	D109011-WHI	3	Triple Lighthouse LED - 1 x 4.6W LED - 2700K - 326lm - White
C	D109012-WHI	3	T Connector - 120mm / 4 3/4" x 140mm 5 1/2" - 2 x 110°, 1 x 140° - White
D	D109013-WHI	4	Y Connector - 120mm / 4 3/4" x 150mm 5 7/8" - 2 x 140°, 1 x 80° - White
E	D109015-WHI	1	Wall/Ceiling Connector with Cable - 226mm / 1 3/16" x 30mm / 8 7/8" - White
F	D109016-WHI	2	Wall/Ceiling Connector - 226mm 1 3/16" x 30mm / 8 7/8" - White
G	D109017-WHI	6	Tube - 35cm / 13 3/4" - White
H	D109018-WHI	1	LED Driver - 24V - Max 100W - 0-10V dimming - White With Metal Enclosure

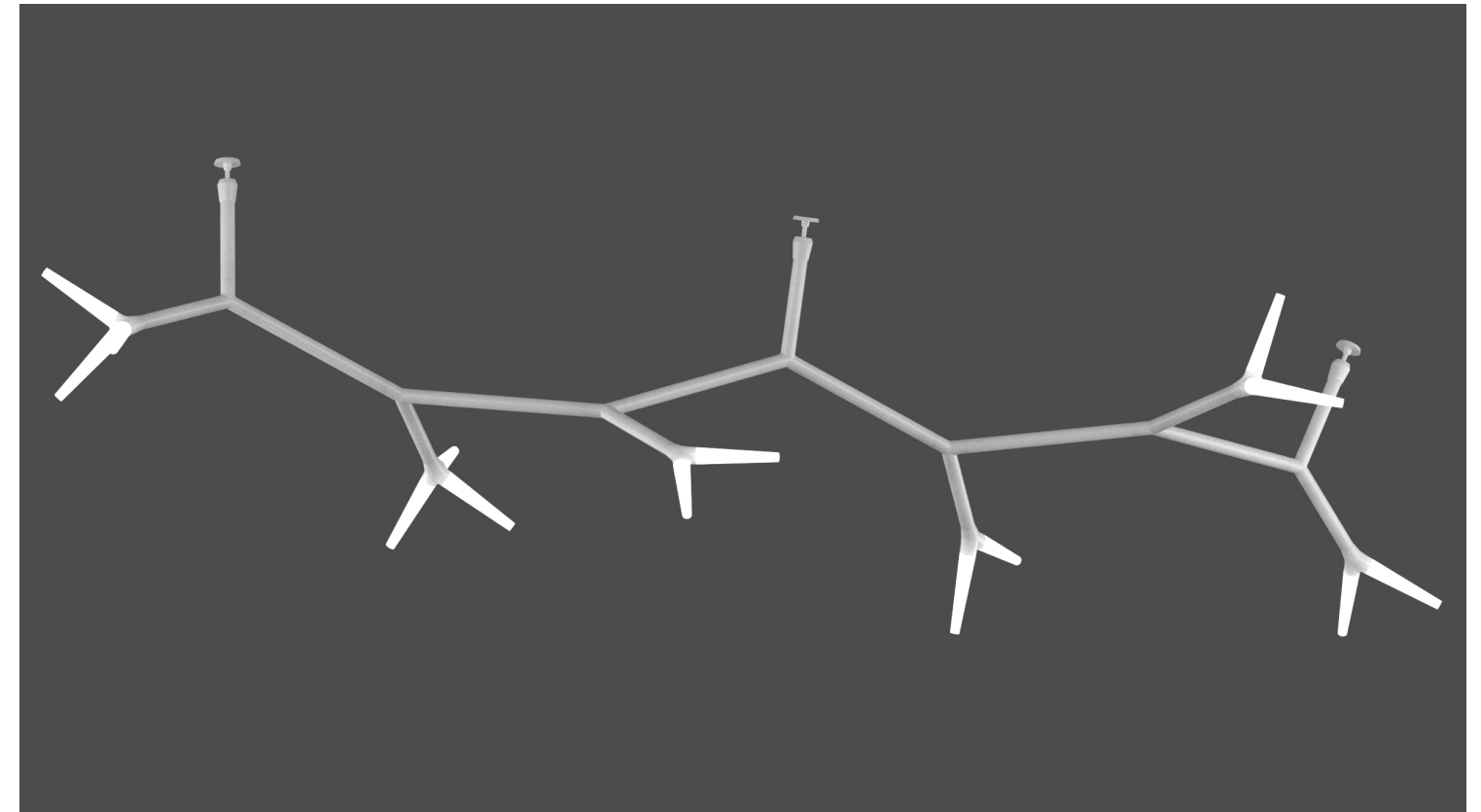
* Available in polished aluminium - suffix "PAL"

* Requires remote driver with enclosure

Zaneen Group Inc. © 2025, T 1800-388-3382, F 416-247-9319, www.zaneen.com

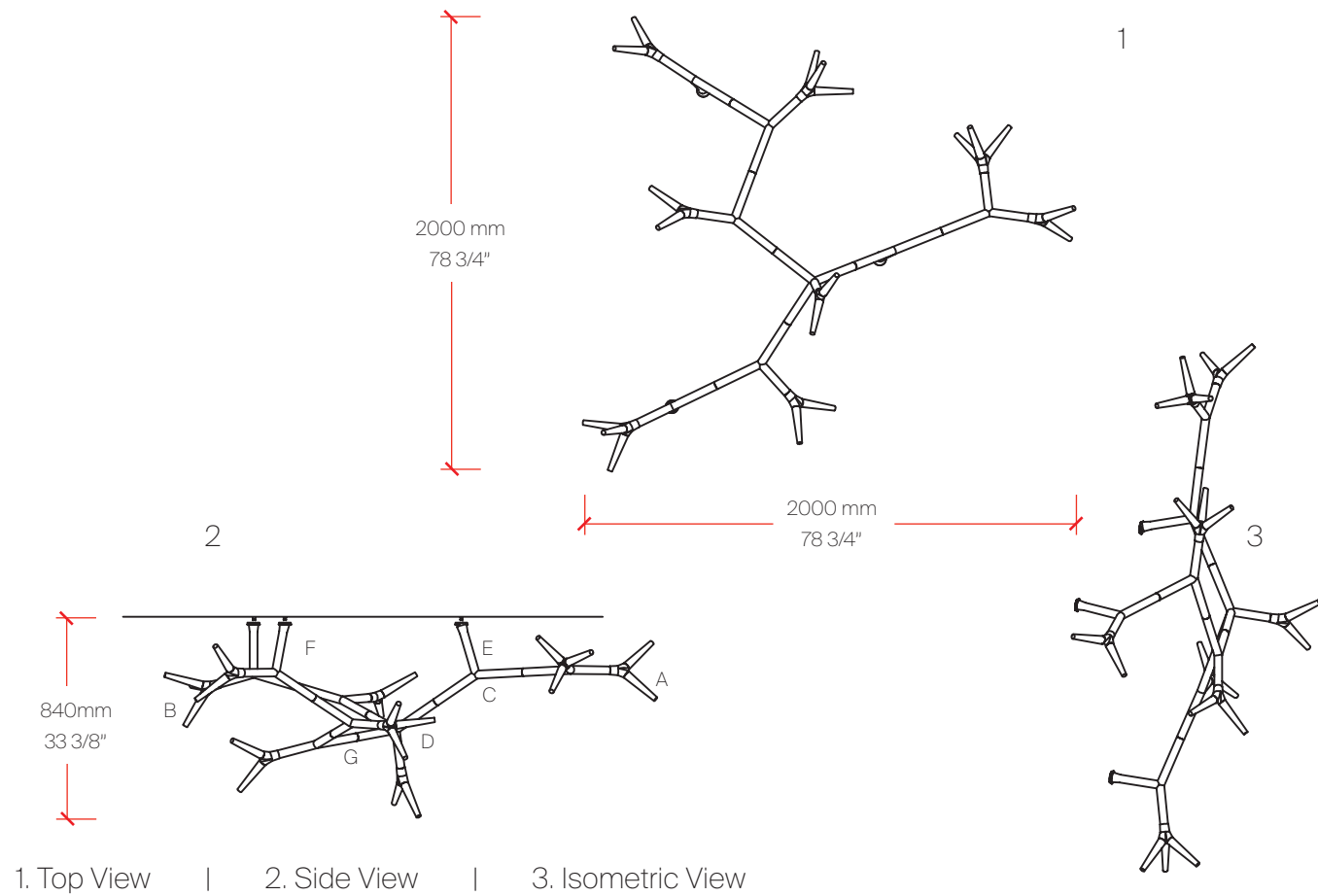
In a constant effort to supply the best product, we reserve the right to change specifications or materials without notice. The most recent specification sheets are found at zaneen.com

CEILING SURFACE 6-LIGHTHEAD



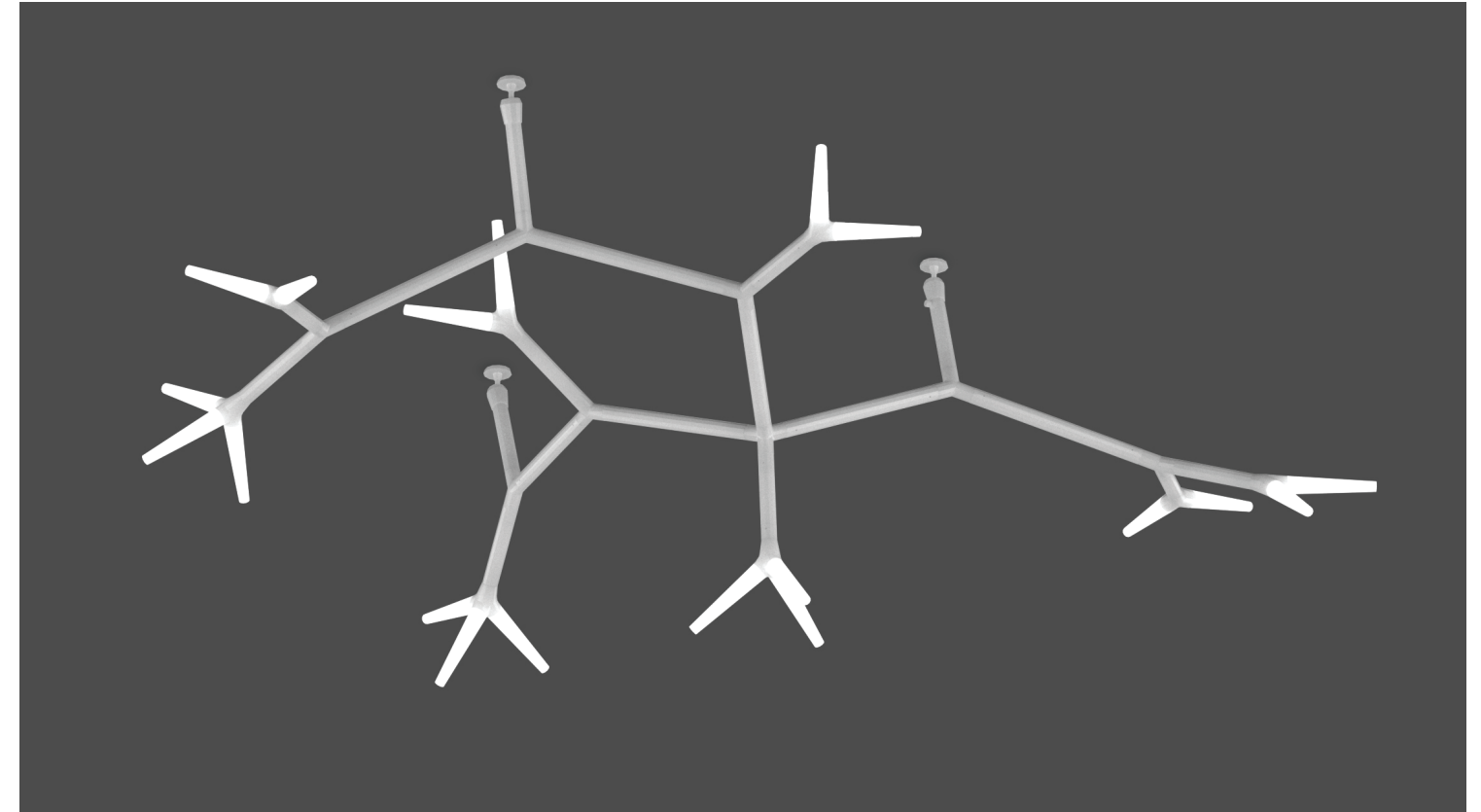
SPARKS MODULAR SYSTEM H

CEILING SURFACE 8-LIGHTHEAD



1. Top View | 2. Side View | 3. Isometric View

CEILING SURFACE 8-LIGHTHEAD



Bill of Materials

Item	Model #	Qty	Description
A	D109010-WHI	5	Double Lighthouse LED - 1 x 4.6W LED - 2700K - 376lm - White
B	D109011-WHI	3	Triple Lighthouse LED - 1 x 4.6W LED - 2700K - 326lm - White
C	D109012-WHI	7	T Connector - 120mm / 4 3/4" x 140mm 5 1/2" - 2 x 110°, 1 x 140° - White
D	D109014-WHI	1	X Connector - 314mm / 12 3/8" x 360mm 14 3/16" - White
E	D109015-WHI	1	Wall/Ceiling Connector with Cable - 226mm / 1 3/16" x 30mm / 8 7/8" - White
F	D109016-WHI	2	Wall/Ceiling Connector - 226mm 1 3/16"x 30mm / 8 7/8" - White
G	D109017-WHI	7	Tube - 35cm / 13 3/4" - White
H	D109018-WHI	1	LED Driver - 24V - Max 100W - 0-10V dimming - White With Metal Enclosure

* Available in polished aluminium - suffix "PAL"

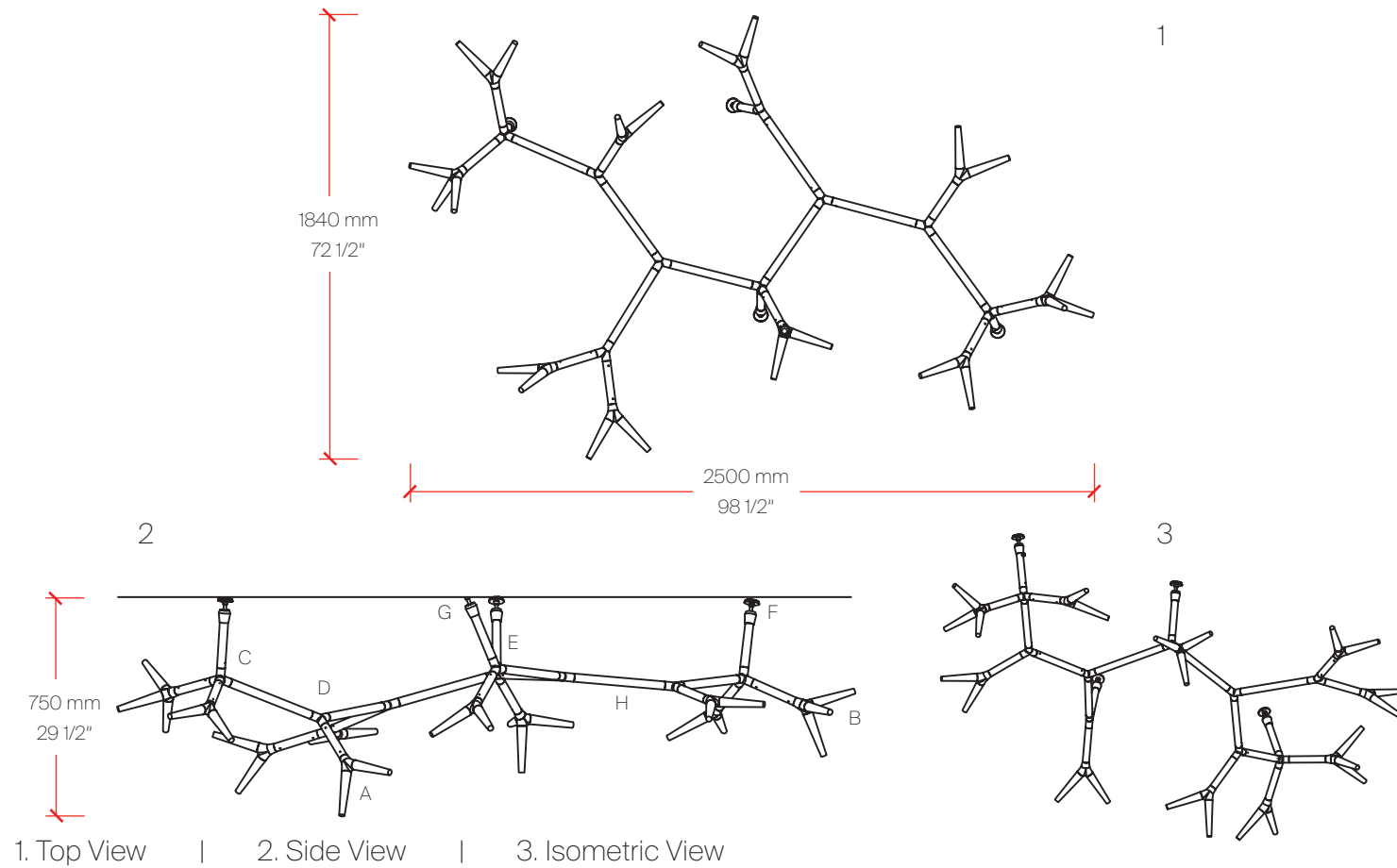
* Requires remote driver with enclosure

Zaneen Group Inc. © 2025, T 1800-388-3382, F 416-247-9319, www.zaneen.com

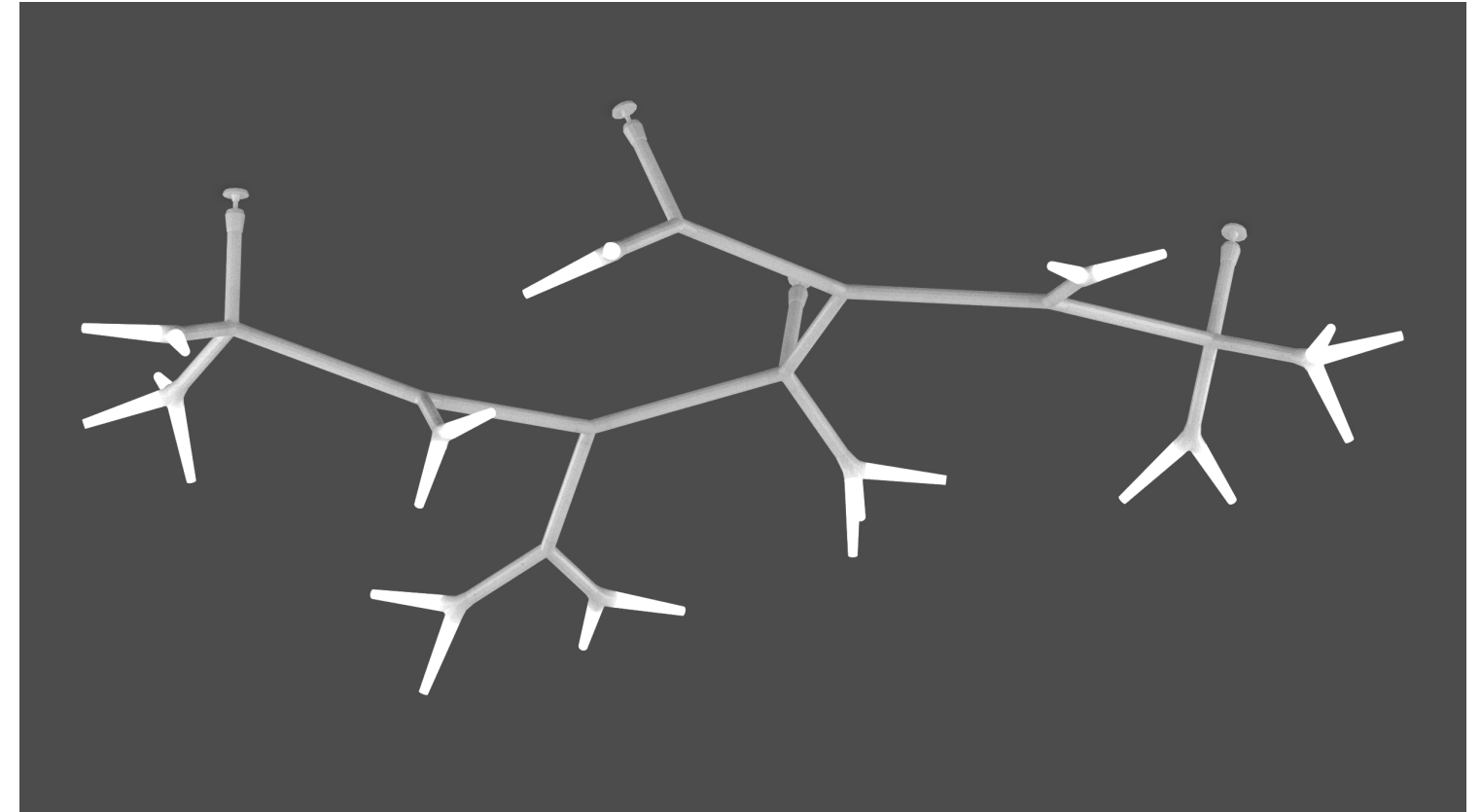
In a constant effort to supply the best product, we reserve the right to change specifications or materials without notice. The most recent specification sheets are found at zaneen.com

SPARKS MODULAR SYSTEM I

CEILING SURFACE 10-LIGHTHEAD



CEILING SURFACE 10-LIGHTHEAD



Bill of Materials

Item	Model #	Qty	Description
A	D109010-WHI	7	Double Lighthead LED - 1 x 4.6W LED - 2700K - 376lm - White
B	D109011-WHI	3	Triple Lighthead LED - 1 x 4.6W LED - 2700K - 326lm - White
C	D109012-WHI	5	T Connector - 120mm / 4 3/4" x 140mm 5 1/2" - 2 x 110°, 1 x 140° - White
D	D109013-WHI	1	Y Connector - 120mm / 4 3/4" x 150mm 5 7/8" - 2 x 140°, 1 x 80° - White
E	D109014-WHI	3	X Connector - 314mm / 12 3/8" x 360mm 14 3/16" - White
F	D109015-WHI	1	Wall/Ceiling Connector with Cable - 226mm / 1 3/16" x 30mm / 8 7/8" - White
G	D109016-WHI	3	Wall/Ceiling Connector - 226mm 1 3/16" x 30mm / 8 7/8" - White
H	D109017-WHI	8	Tube - 35cm / 13 3/4" - White
I	D109018-WHI	1	LED Driver - 24V - Max 100W - 0-10V dimming - White With Metal Enclosure

* Available in polished aluminium - suffix "PAL"

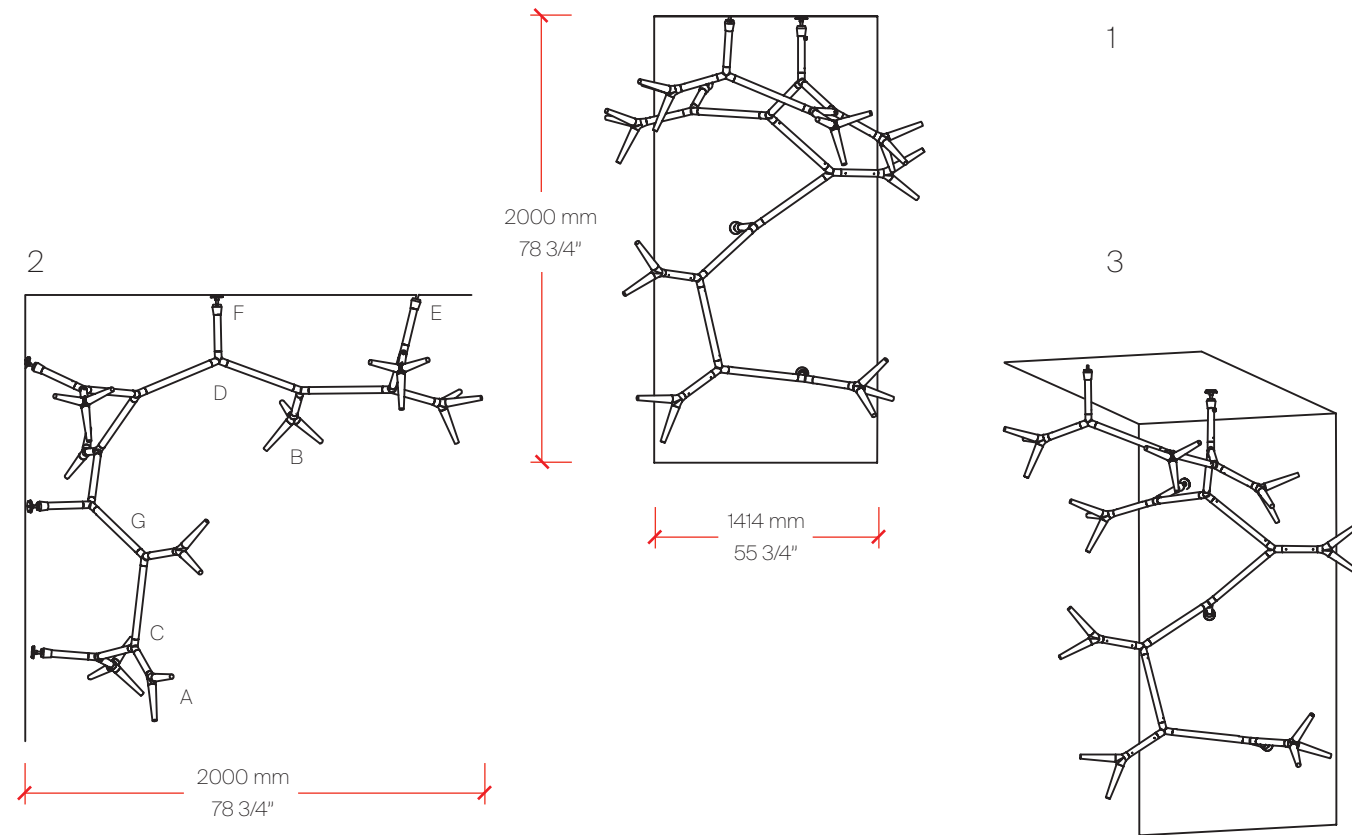
* Requires remote driver with enclosure

Zaneen Group Inc. © 2025, T 1800-388-3382, F 416-247-9319, www.zaneen.com

In a constant effort to supply the best product, we reserve the right to change specifications or materials without notice. The most recent specification sheets are found at zaneen.com

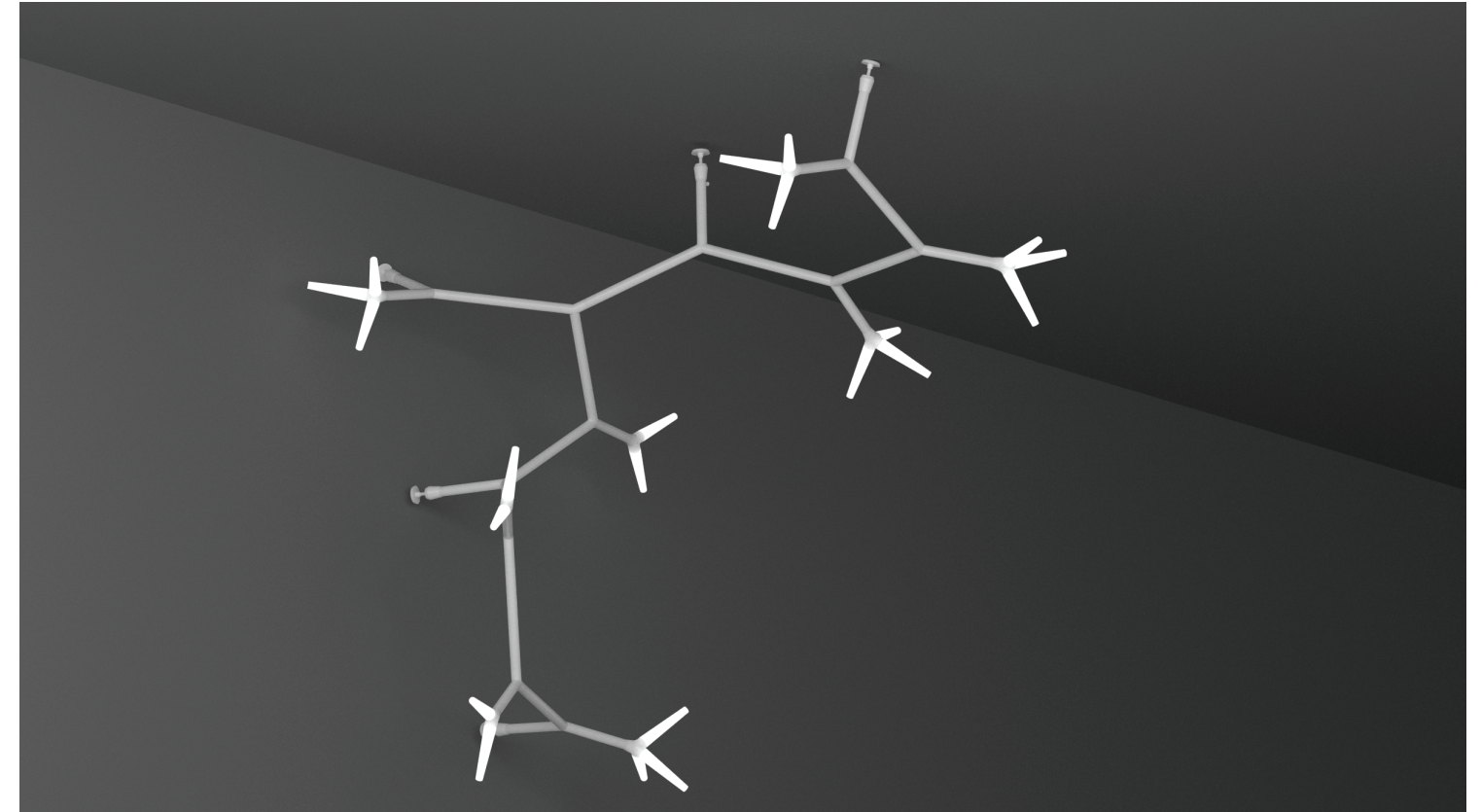
SPARKS MODULAR SYSTEM J

CEILING TO WALL SURFACE 8-LIGHTHEAD



1. Top View | 2. Side View | 3. Isometric View

CEILING TO WALL SURFACE 8-LIGHTHEAD



Bill of Materials

Item	Model #	Qty	Description
A	D109010-WHI	3	Double Lighthouse LED - 1 x 4.6W LED - 2700K - 376lm - White
B	D109011-WHI	5	Triple Lighthouse LED - 1 x 4.6W LED - 2700K - 326lm - White
C	D109012-WHI	10	T Connector - 120mm / 4 3/4" x 140mm 5 1/2" - 2 x 110°, 1 x 140° - White
D	D109013-WHI	1	Y Connector - 120mm / 4 3/4" x 150mm 5 7/8" - 2 x 140°, 1 x 80° - White
E	D109015-WHI	1	Wall/Ceiling Connector with Cable - 226mm / 1 3/16" x 30mm / 8 7/8" - White
F	D109016-WHI	4	Wall/Ceiling Connector - 226mm 1 3/16"x 30mm / 8 7/8" - White
G	D109017-WHI	10	Tube - 35cm / 13 3/4" - White
H	D109018-WHI	1	LED Driver - 24V - Max 100W - 0-10V dimming - White With Metal Enclosure

* Available in polished aluminium - suffix "PAL"

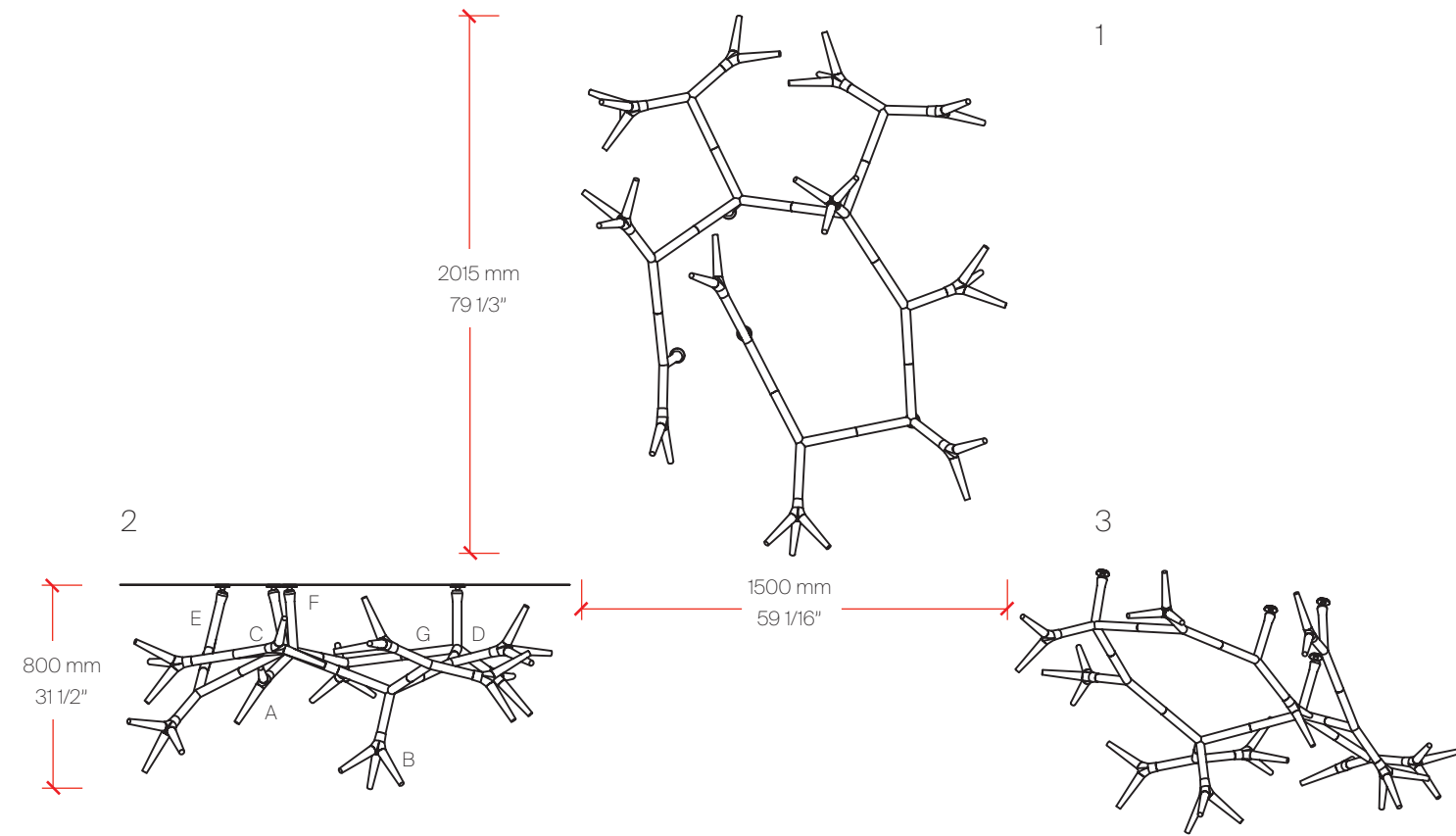
* Requires remote driver with enclosure

Zaneen Group Inc. © 2025, T 1800-388-3382, F 416-247-9319, www.zaneen.com

In a constant effort to supply the best product, we reserve the right to change specifications or materials without notice. The most recent specification sheets are found at zaneen.com

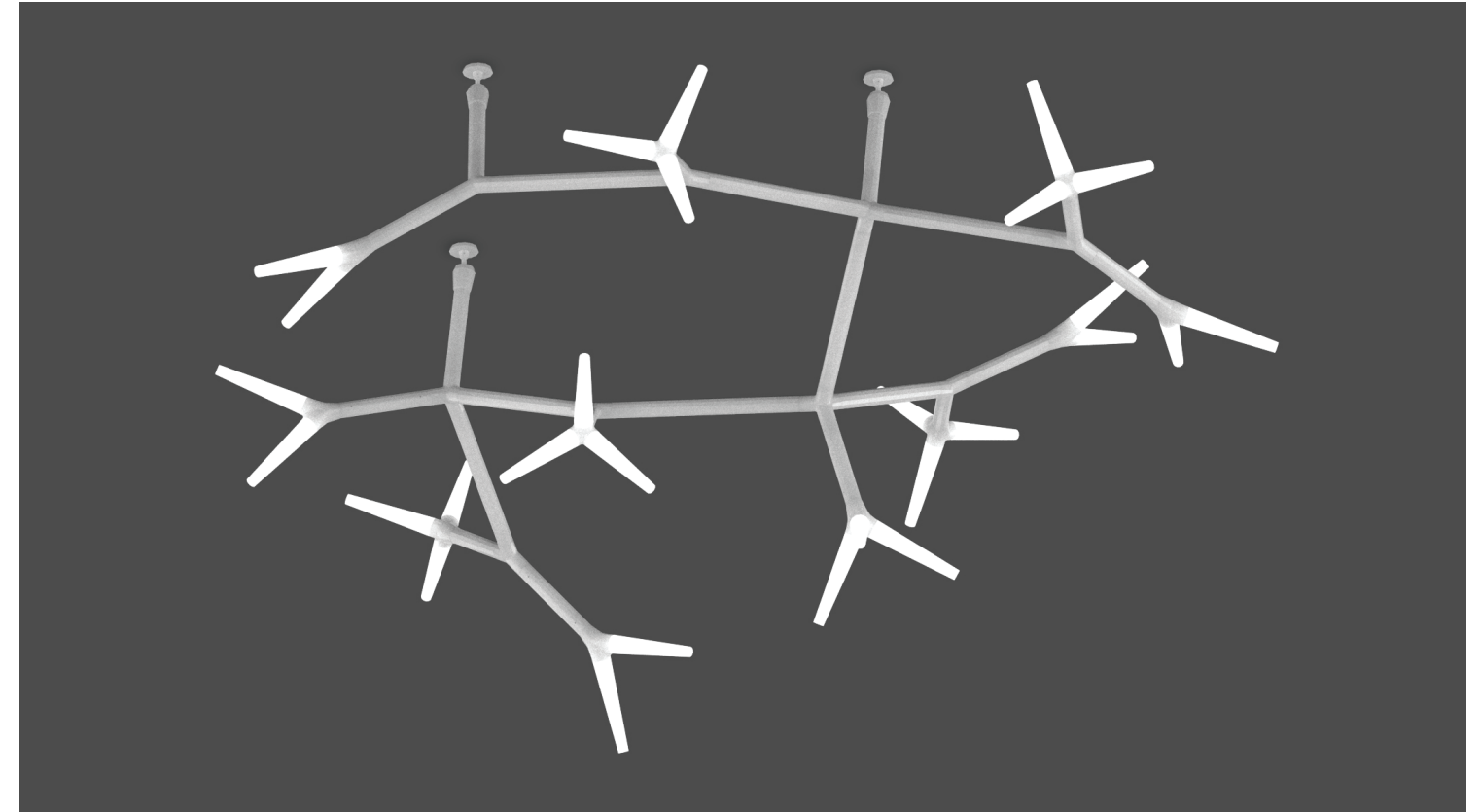
SPARKS MODULAR SYSTEM K

CEILING SURFACE 11-LIGHTHEAD



1. Top View | 2. Side View | 3. Isometric View

CEILING SURFACE 11-LIGHTHEAD



Bill of Materials

Item	Model #	Qty	Description
A	D109010-WHI	5	Double Lighthouse LED - 1 x 4.6W LED - 2700K - 376lm - White
B	D109011-WHI	6	Triple Lighthouse LED - 1 x 4.6W LED - 2700K - 326lm - White
C	D109012-WHI	7	T Connector - 120mm / 4 3/4" x 140mm 5 1/2" - 2 x 110°, 1 x 140° - White
D	D109014-WHI	3	X Connector - 314mm / 12 3/8" x 360mm 14 3/16" - White
E	D109015-WHI	1	Wall/Ceiling Connector with Cable - 226mm / 1 3/16" x 30mm / 8 7/8" - White
F	D109016-WHI	3	Wall/Ceiling Connector - 226mm 1 3/16" x 30mm / 8 7/8" - White
G	D109017-WHI	9	Tube - 35cm / 13 3/4" - White
H	D109018-WHI	1	LED Driver - 24V - Max 100W - 0-10V dimming - White With Metal Enclosure

* Available in polished aluminium - suffix "PAL"

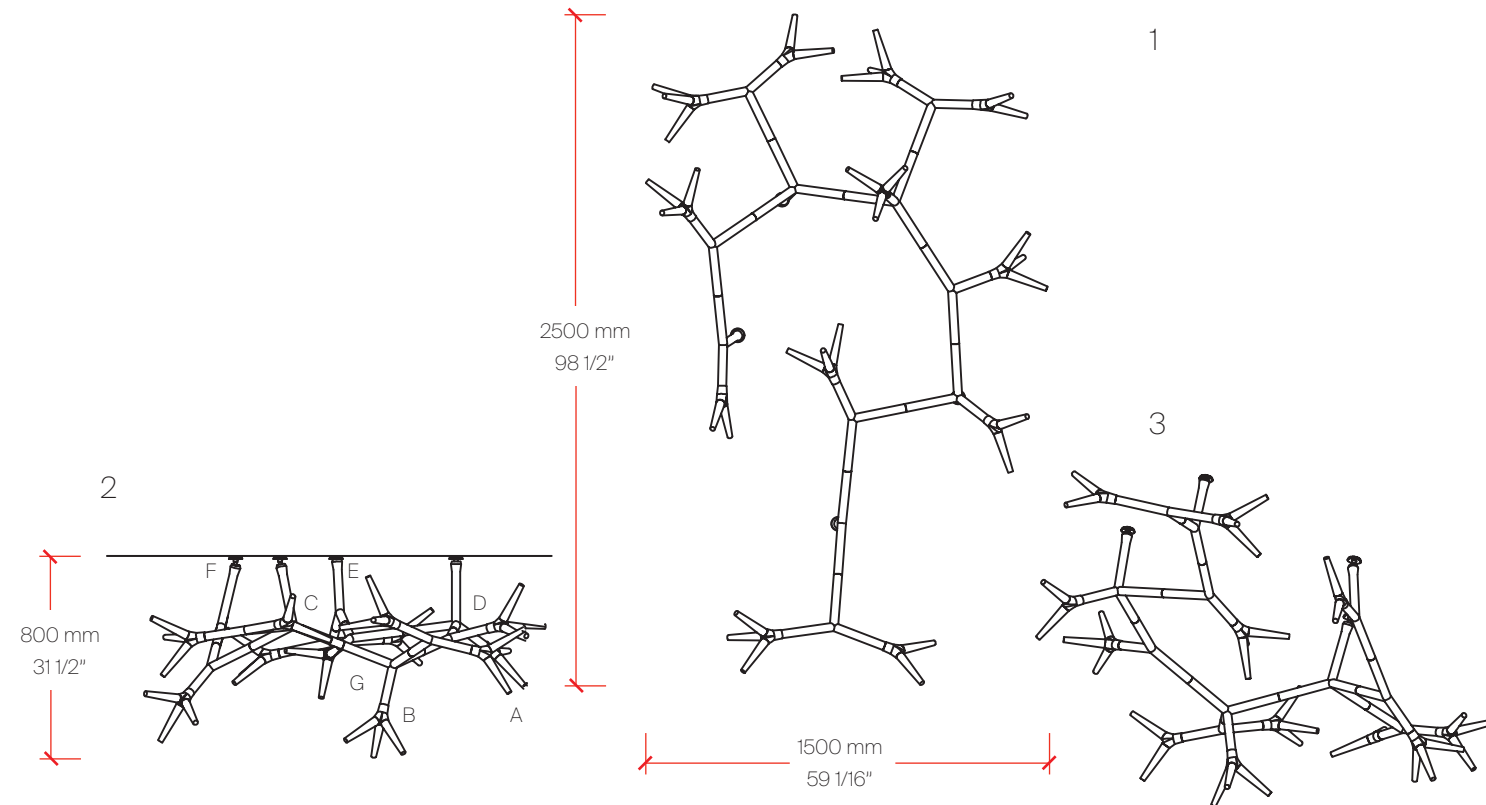
* Requires remote driver with enclosure

Zaneen Group Inc. © 2025, T 1800-388-3382, F 416-247-9319, www.zaneen.com

In a constant effort to supply the best product, we reserve the right to change specifications or materials without notice. The most recent specification sheets are found at zaneen.com

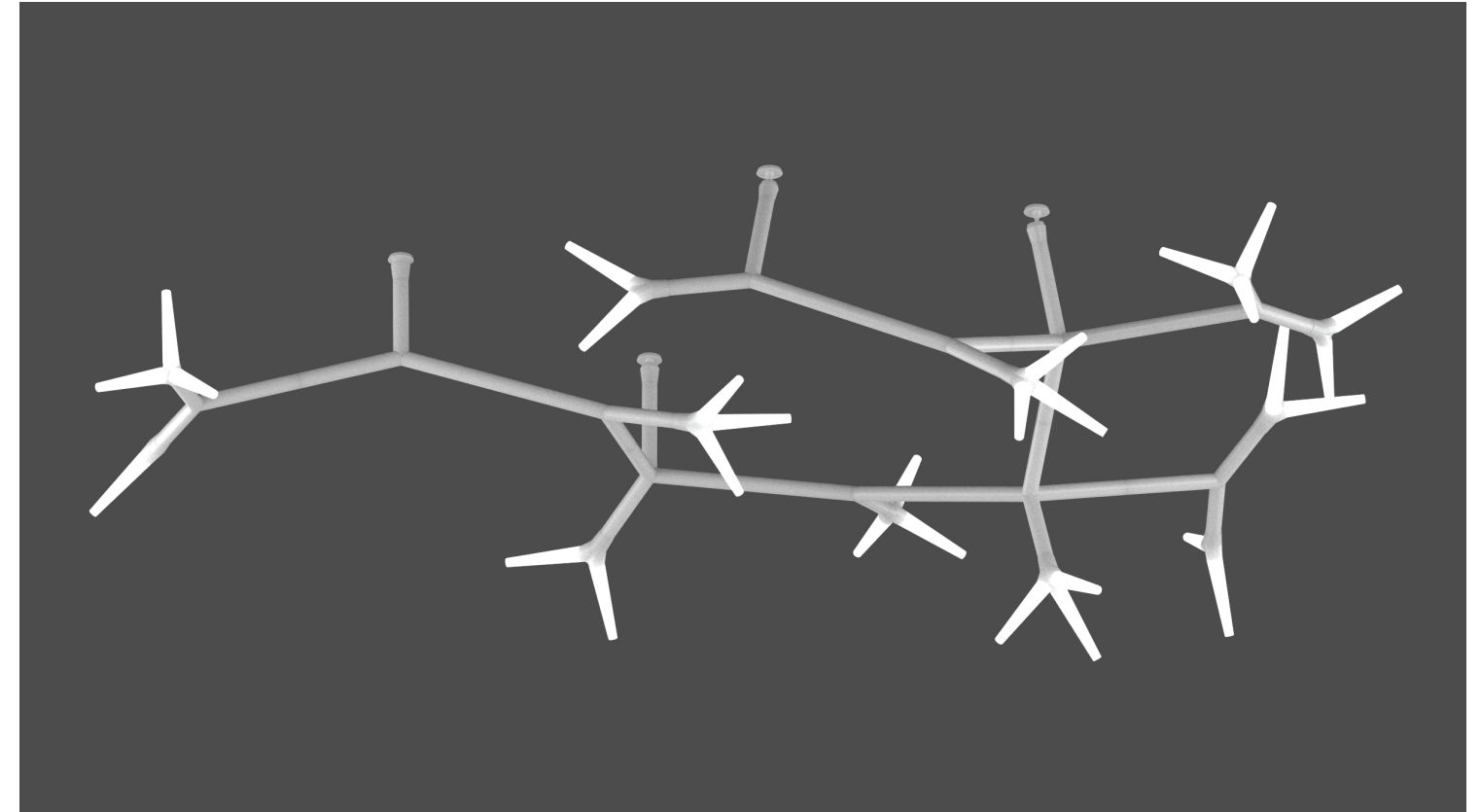
SPARKS MODULAR SYSTEM L

CEILING SURFACE 12-LIGHTHEAD



1. Top View | 2. Side View | 3. Isometric View

CEILING SURFACE 12-LIGHTHEAD



Bill of Materials

Item	Model #	Qty	Description
A	D109010-WHI	5	Double Lighthouse LED - 1 x 4.6W LED - 2700K - 376lm - White
B	D109011-WHI	7	Triple Lighthouse LED - 1 x 4.6W LED - 2700K - 326lm - White
C	D109012-WHI	8	T Connector - 120mm / 4 3/4" x 140mm 5 1/2" - 2 x 110°, 1 x 140° - White
D	D109014-WHI	3	X Connector - 314mm / 12 3/8" x 360mm 14 3/16" - White
E	D109015-WHI	1	Wall/Ceiling Connector with Cable - 226mm / 1 3/16" x 30mm / 8 7/8" - White
F	D109016-WHI	3	Wall/Ceiling Connector - 226mm 1 3/16"x 30mm / 8 7/8" - White
G	D109017-WHI	10	Tube - 35cm / 13 3/4" - White
H	D109018-WHI	1	LED Driver - 24V - Max 100W - 0-10V dimming - White With Metal Enclosure

* Available in polished aluminium - suffix "PAL"

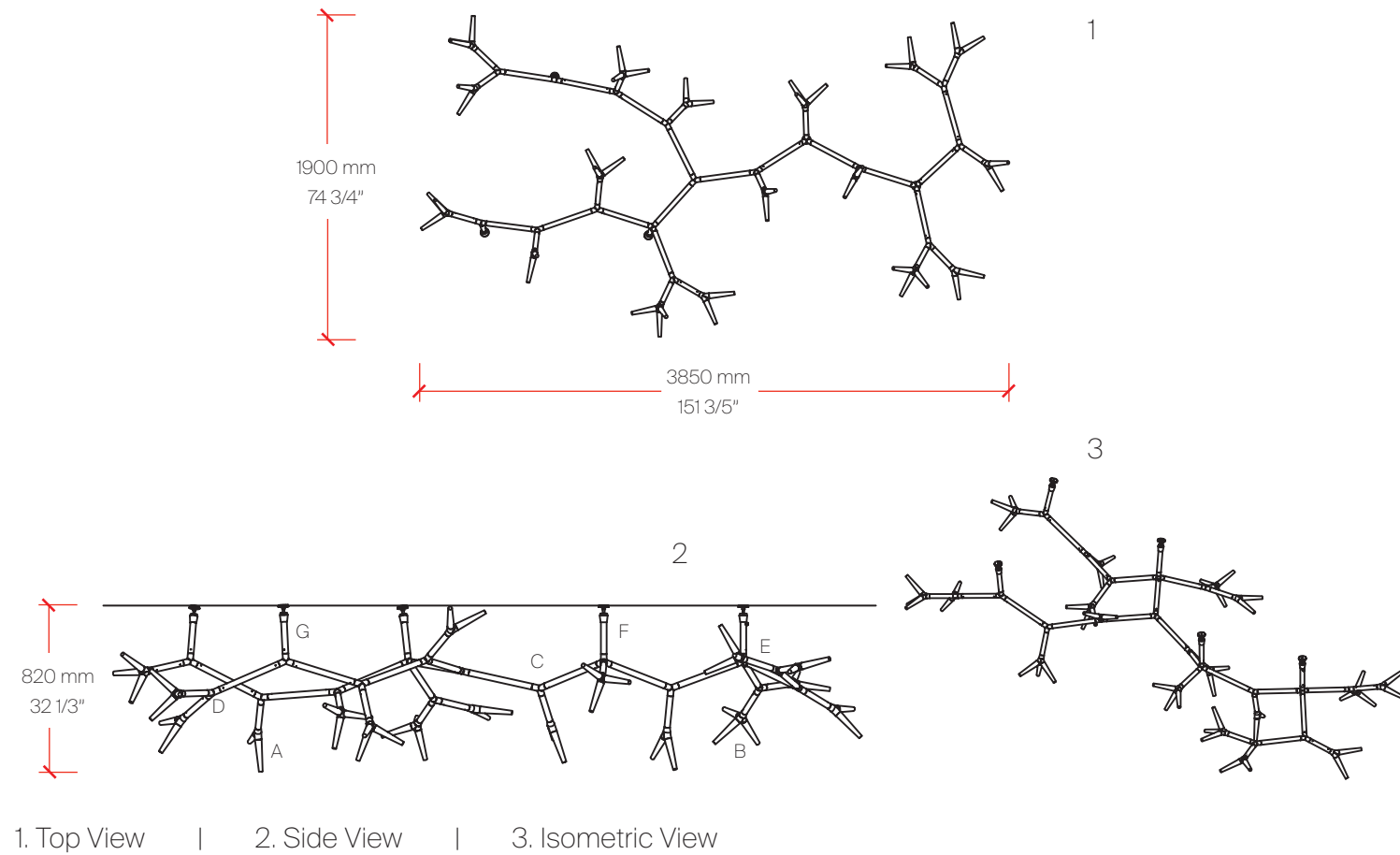
* Requires remote driver with enclosure

Zaneen Group Inc. © 2025, T 1800-388-3382, F 416-247-9319, www.zaneen.com

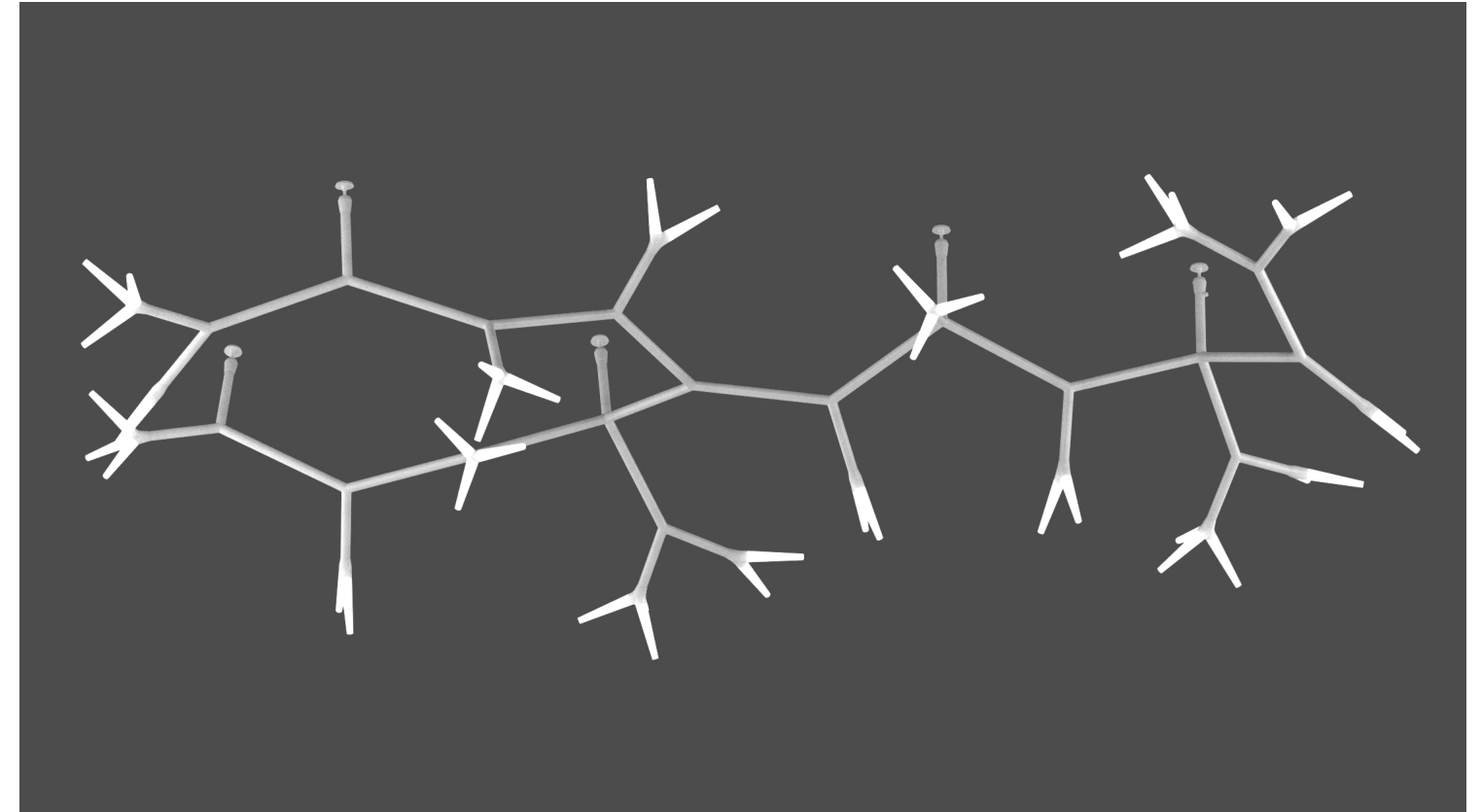
In a constant effort to supply the best product, we reserve the right to change specifications or materials without notice. The most recent specification sheets are found at zaneen.com

SPARKS MODULAR SYSTEM M

CEILING SURFACE 17-LIGHTHEAD



CEILING SURFACE 17-LIGHTHEAD



Bill of Materials

Item	Model #	Qty	Description
A	D109010-WHI	9	Double Lighthouse LED - 1 x 4.6W LED - 2700K - 376lm - White
B	D109011-WHI	8	Triple Lighthouse LED - 1 x 4.6W LED - 2700K - 326lm - White
C	D109012-WHI	10	T Connector - 120mm / 4 3/4" x 140mm 5 1/2" - 2 x 110°, 1 x 140° - White
D	D109013-WHI	4	Y Connector - 120mm / 4 3/4" x 150mm 5 7/8" - 2 x 140°, 1 x 80° - White
E	D109014-WHI	3	X Connector - 314mm / 12 3/8" x 360mm 14 3/16" - White
F	D109015-WHI	1	Wall/Ceiling Connector with Cable - 226mm / 1 3/16" x 30mm / 8 7/8" - White
G	D109016-WHI	4	Wall/Ceiling Connector - 226mm 1 3/16" x 30mm / 8 7/8" - White
H	D109017-WHI	16	Tube - 35cm / 13 3/4" - White
I	D109018-WHI	1	LED Driver - 24V - Max 100W - 0-10V dimming - White With Metal Enclosure

* Available in polished aluminium - suffix "PAL"

* Requires remote driver with enclosure

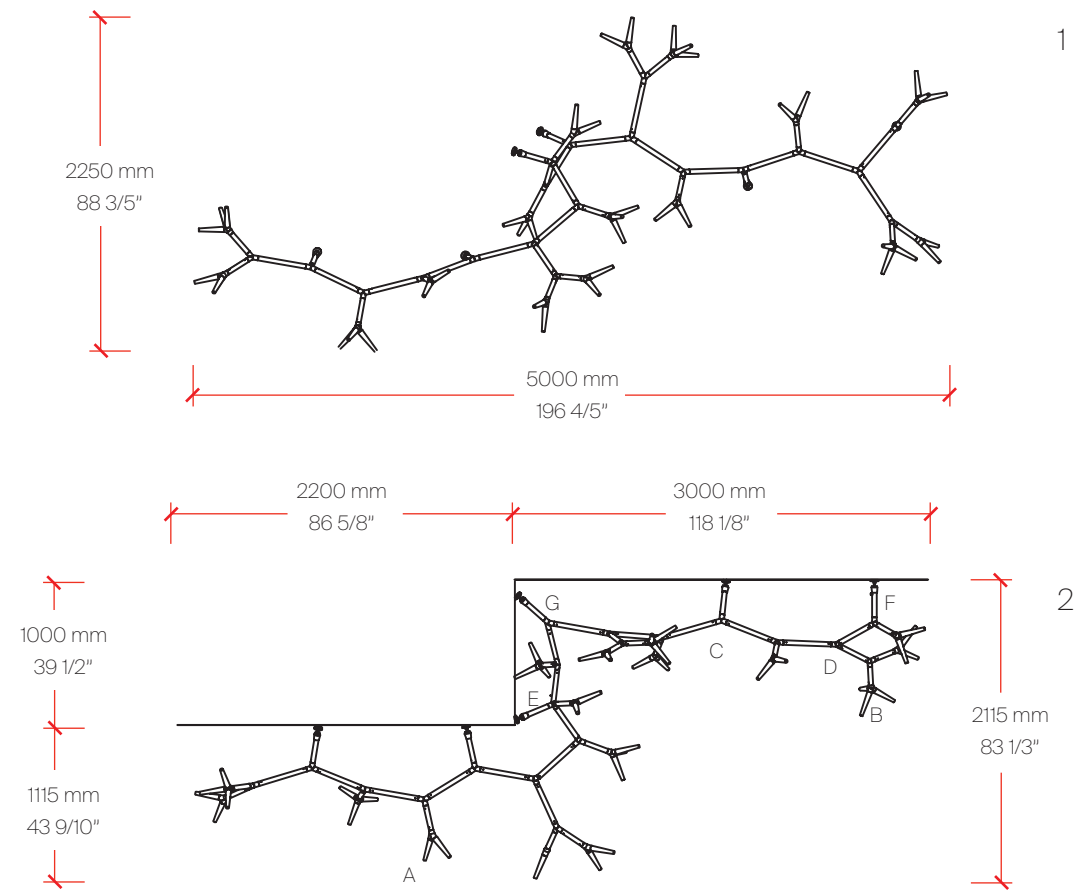
Zaneen Group Inc. © 2025, T 1800-388-3382, F 416-247-9319, www.zaneen.com

In a constant effort to supply the best product, we reserve the right to change specifications or materials without notice. The most recent specification sheets are found at zaneen.com

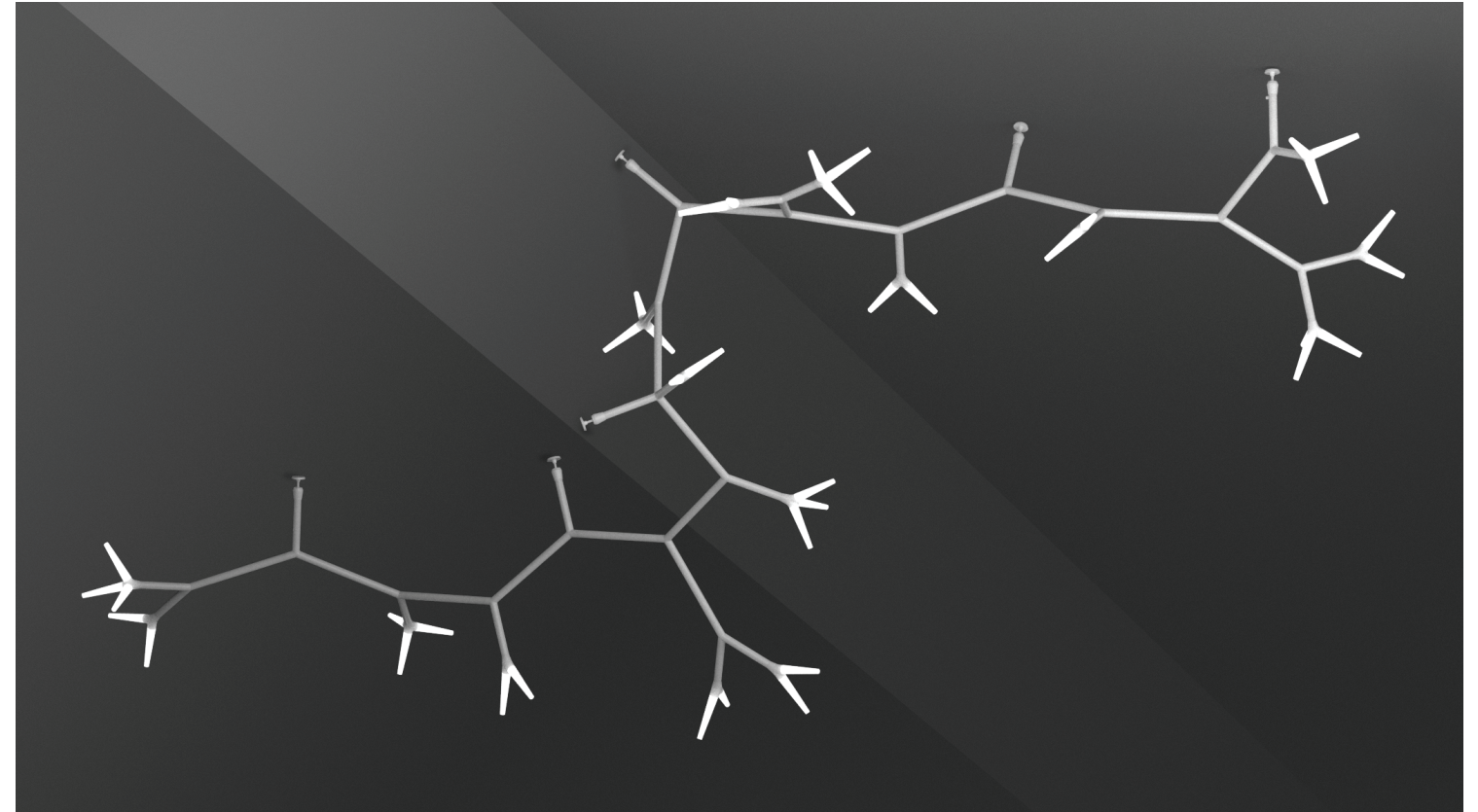
SPARKS MODULAR SYSTEM N

CEILING TO WALL SURFACE 16-LIGHTHEAD

CEILING TO WALL SURFACE 16-LIGHTHEAD



1. Top View | 2. Side View



Bill of Materials

Item	Model #	Qty	Description
A	D109010-WHI	9	Double Lighthouse LED - 1 x 4.6W LED - 2700K - 376lm - White
B	D109011-WHI	7	Triple Lighthouse LED - 1 x 4.6W LED - 2700K - 326lm - White
C	D109012-WHI	14	T Connector - 120mm / 4 3/4" x 140mm 5 1/2" - 2 x 110°, 1 x 140° - White
D	D109013-WHI	4	Y Connector - 120mm / 4 3/4" x 150mm 5 7/8" - 2 x 140°, 1 x 80° - White
E	D109014-WHI	1	X Connector - 314mm / 12 3/8" x 360mm 14 3/16" - White
F	D109015-WHI	1	Wall/Ceiling Connector with Cable - 226mm / 1 3/16" x 30mm / 8 7/8" - White
G	D109016-WHI	5	Wall/Ceiling Connector - 226mm 1 3/16" x 30mm / 8 7/8" - White
H	D109017-WHI	18	Tube - 35cm / 13 3/4" - White
I	D109018-WHI	1	LED Driver - 24V - Max 100W - 0-10V dimming - White With Metal Enclosure

* Available in polished aluminium - suffix "PAL"

* Requires remote driver with enclosure

Zaneen Group Inc. © 2025, T 1800-388-3382, F 416-247-9319, www.zaneen.com

In a constant effort to supply the best product, we reserve the right to change specifications or materials without notice. The most recent specification sheets are found at zaneen.com

ZANEEN

This product catalog has been provided by Zaneen.
Contact your local representative, zteam@zaneen.com or 1-800.388.3382