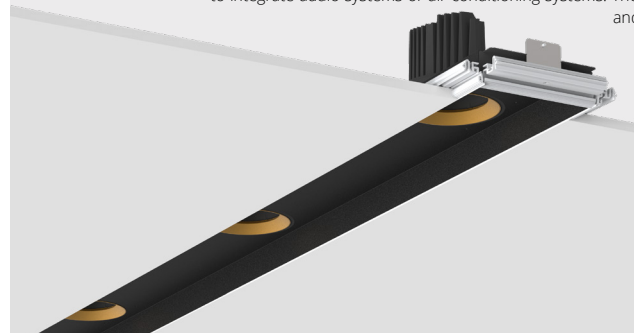


2LOOK4 160 TRIMLESS SYSTEM

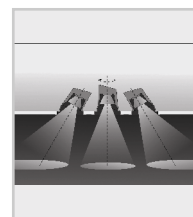
SPECIFICATION SHEET

ARCHITECTURAL

The all-rounder of the 2LOOK4 family combines the advantages of the minimalist knife-edge profile system with additional integrable features. In addition to the seamlessly integrated and adjustable BIONIQ luminaries, it is also possible to integrate audio systems or air conditioning systems. The wide opening of 160 millimeters allows easy installation and maintenance - all connections are accessible at all times



A: Opening width | B: Recess depth | C: Opening depth
D: Width including mounting brackets



With a simple twist, the light cone can be aligned precisely and smoothly. The EAS allows a rotation angle of 355° and tilt angle of up to 30°. Rims of the BIONIQ covers are also available in all 29 colors

PROLICHT

UPON REQUEST

Additional Options

Color Temperature

Special Beam Angle

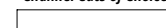
Special LEDs

RGB-W / Tunable

Different Output



Drawing is Required
Channel Cuts of Choice



BUILDING GUIDE

Check boxes to complete specification order and submit to quotes@zaneen.com to receive a formal BOM and finalized model number
For specification purposes, build a unique model number with bold text [30K - DIR - ...]

Quick Ship (QS) - Not Available

Build Code **L32L4160-TRI-SYS-**

| PROFILE - SYSTEM | Product | Color Temperature | Distribution | Length |
|------------------|------------------------------|-------------------|---------------|---------------------|
| | L32L4160-TRI-SYS Trimless | 27K 2700K | DIR Direct | Alum Profile System |
| | | | | length |
| | | 30K 3000K | | Specify in mm |
| | | | | length |
| | | 35K 3500K | | Specify in X'-X" |
| | qty | | | |
| | | | | |
| | | | | |
| | | | | |
| | | | | |
| | | | | |
| | | | | |
| | | | | |
| | | | | |
| | | | | |
| | | | | |
| | | | | |
| | | | | |
| | | | | |
| | | | | |
| | | | | |
| | | | | |
| | | | | |
| | | | | |
| | | | | |
| | | | | |
| | | | | |
| | | | | |
| | | | | |
| | | | | |
| | | | | |
| | | | | |
| | | | | |
| | | | | |
| | | | | |
| | | | | |
| | | | | |
| | | | | |
| | | | | |
| | | | | |
| | | | | |
| | | | | |
| | | | | |
| | | | | |
| | | | | |
| | | | | |
| | | | | |
| | | | | |
| | | | | |
| | | | | |
| | | | | |
| | | | | |
| | | | | |
| | | | | |
| | | | | |
| | | | | |
| | | | | |
| | | | | |
| | | | | |
| | | | | |
| | | | | |
| | | | | |
| | | | | |
| | | | | |
| | | | | |
| | | | | |
| | | | | |
| | | | | |
| | | | | |
| | | | | |
| | | | | |
| | | | | |
| | | | | |
| | | | | |
| | | | | |
| | | | | |
| | | | | |
| | | | | |
| | | | | |
| | | | | |
| | | | | |
| | | | | |
| | | | | |
| | | | | |
| | | | | |
| | | | | |
| | | | | |
| | | | | |
| | | | | |
| | | | | |
| | | | | |
| | | | | |
| | | | | |
| | | | | |
| | | | | |
| | | | | |
| | | | | |
| | | | | |
| | | | | |
| | | | | |
| | | | | |
| | | | | |
| | | | | |
| | | | | |
| | | | | |
| | | | | |
| | | | | |
| | | | | |
| | | | | |
| | | | | |
| | | | | |
| | | | | |
| | | | | |
| | | | | |
| | | | | |
| | | | | |
| | | | | |
| | | | | |
| | | | | |
| | | | | |
| | | | | |
| | | | | |
| | | | | |
| | | | | |
| | | | | |
| | | | | |
| | | | | |
| | | | | |
| | | | | |
| | | | | |
| | | | | |
| | | | | |
| | | | | |
| | | | | |
| | | | | |
| | | | | |
| | | | | |
| | | | | |
| | | | | |
| | | | | |
| | | | | |
| | | | | |
| | | | | |
| | | | | |
| | | | | |
| | | | | |
| | | | | |
| | | | | |
| | | | | |
| | | | | |
| | | | | |
| | | | | |
| | | | | |
| | | | | |
| | | | | |
| | | | | |
| | | | | |
| | | | | |
| | | | | |
| | | | | |
| | | | | |
| | | | | |
| | | | | |
| | | | | |
| | | | | |
| | | | | |
| | | | | |
| | | | | |
| | | | | |
| | | | | |
| | | | | |
| | | | | |
| | | | | |
| | | | | |
| | | | | |
| | | | | |
| | | | | |
| | | | | |
| | | | | |
| | | | | |
| | | | | |
| | | | | |
| | | | | |
| | | | | |
| | | | | |
| | | | | |
| | | | | |
| | | | | |
| | | | | |
| | | | | |
| | | | | |
| | | | | |
| | | | | |
| | | | | |
| | | | | |
| | | | | |
| | | | | |
| | | | | |
| | | | | |
| | | | | |
| | | | | |
| | | | | |
| | | | | |
| | | | | |
| | | | | |
| | | | | |
| | | | | |
| | | | | |
| | | | | |
| | | | | |
| | | | | |
| | | | | |
| | | | | |
| | | | | |
| | | | | |
| | | | | |
| | | | | |
| | | | | |
| | | | | |
| | | | | |
| | | | | |
| | | | | |
| | | | | |
| | | | | |
| | | | | |

| PROFILE - SYSTEM | Electrical | Input Voltage | Emergency | Finish | |
|------------------|--|--|--------------------------------------|--|---------------------------------------|
| | DN Non-Dimming | UNV Universal 120V / 277V | EMCIR Emergency Circuit | End Component ◆ 01-29 | Channel 2-Fold ◆ 01-29 |
| | DP Phase Dimming | | | Channel Cuts of Choice ◆ 01-29 | Channel 2-Fold Long ◆ 01-29 |
| | DV 0-10 Dimming | | | Blind Channel ◆ 01-29 | Channel 3-Fold ◆ 01-29 |
| | DD Dali Dimming (Upon Request) | | | Channel 1-Fold ◆ 01-29 | |
| | refer to color chart refer to inserts to build code RAL color # (upon request) | | | | |

2LOOK4 160 TRIMLESS SYSTEM

SPECIFICATION SHEET

PROJECT _____

TYPE _____

NOTES _____

QUANTITY _____

DATE _____

| | | | | | | | |
|------------------|---------------------------------|--|--------------------------|-------------|--|--|--|
| ALUMINUM PROFILE | Build Code L3657900- --- | | | | | qty | |
| | | | Dimension mm mm² | | | | |
| | | | | W: 39 H: 31 | | per meter max 3000mm field-cutable | |

| | | | | | | | |
|---------------|---------------------------|--|-------------------------|-------------------|--------|---------|--|
| END COMPONENT | Build Code L39585- | | | | | qty | |
| | | | Dimension mm mm | | Finish | | |
| | | | | 38 x 163 H: 67 | | ◆ 01-29 | |

| | | | | | | | |
|-------------------------|---------------------------|--|-------------------------|---------------------|--------|-----------------------|--|
| CHANNEL - CUT OF CHOICE | Build Code L38534- | | | | | qty | |
| | | | Dimension mm mm | | Finish | | |
| | | | | 1000 x 165 H: 45 | | max 2400mm ◆ 01-29 | |

| | | | | | | | |
|---------------|---------------------------|--|-------------------------|---------------------|--------|---------|--|
| CHANNEL BLIND | Build Code L38535- | | | | | qty | |
| | | | Dimension mm mm | | Finish | | |
| | | | | 1200 x 165 H: 45 | | ◆ 01-29 | |

| | | | | | | | |
|----------------|-----------------------------|--|-------------------------|---------------------|---------------------|--|--|
| CHANNEL 1-FOLD | Build Code L3853 _ - | | | | | qty | |
| | | | Dimension mm mm | | Build Code Addition | Finish | |
| | | | | 1200 x 165 H: 45 | | Ø 95 53 <u>6</u> - Ø 125 53 <u>7</u> - ◆ 01-29 | |

2LOOK4 160 TRIMLESS SYSTEM

SPECIFICATION SHEET

PROJECT _____

TYPE _____

NOTES _____

QUANTITY _____

DATE _____

| | | | | | | | |
|-------------------------------|--|--|-------------------------------|---|--|---------|--|
| Build Code L3853 _ - | | | | | | qty | |
| CHANNEL 2-FOLD | | | Dimension | | Build Code Addition | Finish | |
| | | | mm | mm | | | |
| | | | 1200 x 165 H: 45 | Ø 95 Ø 125 | 53 <u>8</u> - 53 <u>9</u> - | ◆ 01-29 | |
| Build Code L3854 _ - | | | | | | qty | |
| CHANNEL 2-FOLD LONG | | | Dimension | | Build Code Addition | Finish | |
| | | | mm | mm | | | |
| | | | 1200 x 165 H: 45 | Ø 95 Ø 125 | 54 <u>0</u> - 54 <u>1</u> - | ◆ 01-29 | |
| Build Code L3854 _ - | | | | | | qty | |
| CHANNEL 3-FOLD | | | Dimension | | Build Code Addition | Finish | |
| | | | mm | mm | | | |
| | | | 1200 x 165 H: 45 | Ø 95 Ø 125 | 54 <u>2</u> - 54 <u>3</u> - | ◆ 01-29 | |
| Build Code L3876 _ _ _ | | | | | | qty | |
| MOUNTING FRAME | | | Dimension | | Build Code Addition | | |
| | | | mm | mm | | | |
| | | | Ø 95 H: 23 Ø 125 H: 23 | Ø 95 Ø 125 required for each spot | 76 <u>3</u> <u>9</u> <u>9</u> 76 <u>4</u> <u>9</u> <u>9</u> | | |
| Build Code L3951700 | | | | | | qty | |
| FRAME ALIGNMENT KIT | | | Dimension | | | | |
| | | | mm | | | | |
| | | | 115 x 167 H: 25 | | | | |

2LOOK4 160 TRIMLESS SYSTEM SPECIFICATION SHEET

PROJECT _____

TYPE _____

NOTES _____


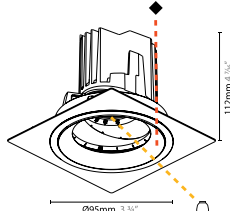
QUANTITY _____

DATE _____

Build Code **L38477-**

qty


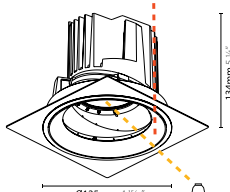
BIONIQ 95

| |  |  | | | | | | | | |
|--|---|---|--------------------|-------------------------|------------|----------------------|--------------------------|---------------|--------------------|--|
| | | | Wattage | Delivered Lumens | CRI | Dimming | Color Temperature | Finish | Reflector | |
| | | | 14 14.5W | 940 940lm | 90 | DN Non-Dim | 27K 2700K | 01-29 | 20 △ 20° | |
| | | | | 980 980lm | | DP Phase | 30K 3000K | | 40 △ 40° | |
| | | | | 1029 1029lm | | DV 0-10V | 35K 3500K | | 60 △ 60° | |
| | | | | 1050 1050lm | | | 40K 4000K | | | |

Build Code **L38480-**

qty

BIONIQ 125

| |  |  | | | | | | | | |
|--|--|--|--------------------|-------------------------|------------|----------------------|--------------------------|---------------|--------------------|--|
| | | | Wattage | Delivered Lumens | CRI | Dimming | Color Temperature | Finish | Reflector | |
| | | | 26 26.4W | 2030 2030lm | 90 | DN Non-Dim | 27K 2700K | 01-29 | 20 △ 20° | |
| | | | | 2080 2080lm | | DP Phase | 30K 3000K | | 25 △ 25° | |
| | | | | 2185 2185lm | | DV 0-10V | 35K 3500K | | 40 △ 40° | |
| | | | | 2230 2230lm | | | 40K 4000K | | | |

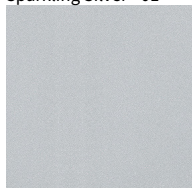
2LOOK4 160 TRIMLESS SYSTEM

SPECIFICATION SHEET

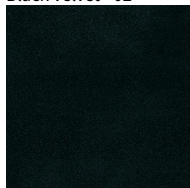
| | |
|----------|--|
| PROJECT | |
| TYPE | |
| NOTES | |
| QUANTITY | |
| DATE | |

FINISH COLORS 01-29

Sparkling Silver - 01



Black Velvet - 02



Crystal White - 03



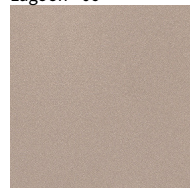
Creamy - 04



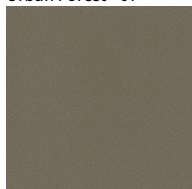
Hampton Bay - 05



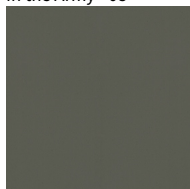
Lagoon - 06



Urban Forest - 07



In the Army - 08



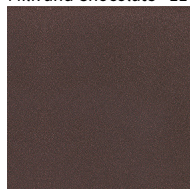
Rusty Angel - 09



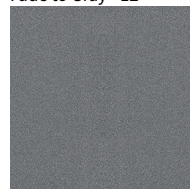
Rusty Rush - 10



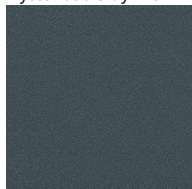
Milk and Chocolate - 11



Fade to Gray - 12



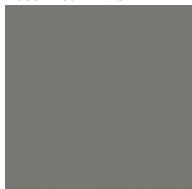
Mysterious Gray - 13



Twilight - 14



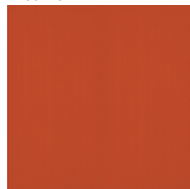
Lost Dream - 15



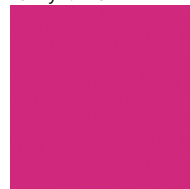
Purple Sky - 16



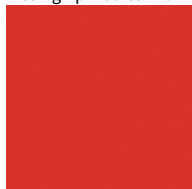
Fresh Oh - 17



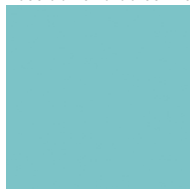
Funky P. - 18



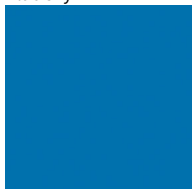
Kissing Aphrodite - 19



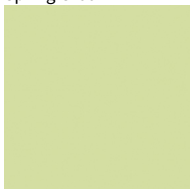
Poseidon's Paradise - 20



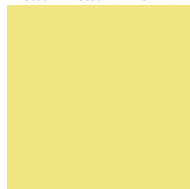
Blue Sky - 21



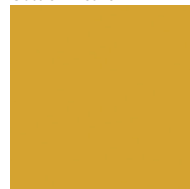
Spring Green - 22



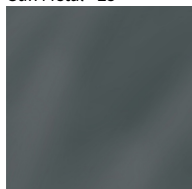
Mellow Yellow - 23



Golden Heart - 24



Gun Metal - 25



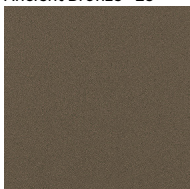
Champagne Cream - 26



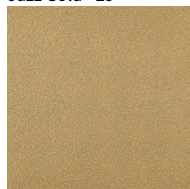
Copper Mine - 27



Ancient Bronze - 28



Jazz Gold - 29



Digital: Not all screens are calibrated the same, and therefore, colors will appear differently between screens.

Physical: When texture is involved, there will be variations in color, character and tone within a product series and between product families.

Gun Metal: No Gun Metal finish is alike. It combines a mixture of transparent and black color particles which ensures a highly individual effect and no luminaire being identical.

Champagne Cream, Copper Mine, Ancient Bronze + Jazz Gold: These finishes have slight fading from specific powder coating production. Each luminaire will slightly vary.

RAL Color Upon Request



2LOOK4 160 TRIMLESS SYSTEM

SPECIFICATION SHEET

| | |
|----------|--|
| PROJECT | |
| TYPE | |
| NOTES | |
| QUANTITY | |
| DATE | |

LEGEND

| | | | | | |
|--|--|--|--|--|--|
| | floor-mounted | | pivotal | | special LED (upon request) RGB, RGBW, tunable, gold+, meat+, art+, fashion+ |
| | wall and ceiling: recessed and surface mounted | | rotating | | warm dim / natural dimming LED |
| | ceiling-mounted and wall-mounted | | illuminate tilted | | rechargeable battery powered |
| | wall-mounted | | color of suspension cable | | fixture with natural vivid LED (upon request) |
| | omni-directional light distribution | | length of suspension cable | | color rendering index |
| | direct light distribution | | reflector degree selection | | color temperature |
| | direct/indirect light distribution | | super spot | | lumen (luminous flux) |
| | indirect light distribution | | lens | | efficacy (lumens per watt) |
| | asymmetric light distribution | | lens pack | | Unified Glare Rating (UGR) range from 5-40 |
| | aura light distribution | | shine ring | | marine grade (AISI 316 stainless steel) |
| | round wall or ceiling cut-out | | integrated shine ring with diffuser | | walk on |
| | square wall or ceiling cut-out | | free individual colors 01-29 | | drive on |
| | the supplied jig specifies the cutout dimensions | | individual colors: 00 (free of charge), 01-25 (extra charge) | | Dark Sky Compliance |
| | minimum distance (meters) lamp - object | | luminaire part to be colored (F1) | | Americans with Disabilities Act (less than 4" off the wall located between 27"-84" from floor) |
| | recessed depth | | luminaire part to be colored (F2) | | lamp protected against explosion |
| | ceiling thickness in mm | | luminaire part to be colored (F3) | | blown glass using traditional methods by master glass blower |
| | ceiling thickness selection | | luminaire part to be colored (F4) | | acoustic material |
| | dimmmable DP (phase), DV (0-10V), DD (dali), DS (step-dim) | | luminaire part to be colored (F5) | | protection class I, protection insulation |
| | included or excluded LED driver/transformer/ control gear | | color of 3-circuit adaptor | | protection class II, protection insulation |
| | separately switchable | | indirect diffuser | | ETL Certified to UL and CSA Standards |
| | sensor | | direct diffuser | | UL Certified to UL and CSA Standards |
| | remote control | | ball-proof (upon request) | | CSA Certified to UL and CSA Standards |
| | available upon request | | accessory | | Certified for North American Standards |

IP RATING

| | |
|--|--|
| | protected against ingress of solid bodies greater than 12.5mm (finger) |
| | protected against ingress of solid bodies greater than 2.5mm protected against sprays of water up to 60 degrees from the vertical (rain) |
| | protected against ingress of solid bodies greater than 1mm (wire) no protection against the ingress of moisture |
| | protected against ingress of solid bodies greater than 1mm (wire) protected against sprays of water up to 60 degrees from the vertical (rain) |
| | protected against ingress of solid bodies greater than 1mm (wire) protected against water splashed from all directions |
| | protected against limited ingress of dust (wet rooms/covered outdoor areas) protected against water splashed from all directions |
| | protected against ingress of dust protected against jets of water |
| | protected against ingress of dust protected against powerful jets of water or heavy seas |
| | protected against ingress of dust protected against immersion of water between 15cm - 1m for 30 minutes |
| | protected against ingress of dust protected against immersion of water under pressure for long periods |

IK RATING

| | |
|--|---|
| | protected against 0.14 joules impact (equivalent to 0.25kg mass dropped from 56mm above the surface) |
| | protected against 0.2 joules impact (equivalent to 0.25kg mass dropped from 80mm above the surface) |
| | protected against 0.35 joules impact (equivalent to 0.25kg mass dropped from 140mm above the surface) |
| | protected against 0.5 joules impact (equivalent to 0.25kg mass dropped from 200mm above the surface) |
| | protected against 0.7 joules impact (equivalent to 0.25kg mass dropped from 280mm above the surface) |
| | protected against 1 joules impact (equivalent to 0.25kg mass dropped from 400mm above the surface) |
| | protected against 2 joules impact (equivalent to 0.5kg mass dropped from 400mm above the surface) |
| | protected against 5 joules impact (equivalent to 1.7kg mass dropped from 300mm above the surface) |
| | protected against 10 joules impact (equivalent to 5.0kg mass dropped from 200mm above the surface) |
| | protected against 20 joules impact (equivalent to 5.0kg mass dropped from 400mm above the surface) |

2LOOK4 160 TRIMLESS SYSTEM

SPECIFICATION SHEET

| | |
|----------|--|
| PROJECT | |
| TYPE | |
| NOTES | |
| QUANTITY | |
| DATE | |

SYSTEM SUMMARY

System

Type
Trimless (Non-IC type)
Rated for Dry Locations Ceiling Mounted

Approval Status
CSA Certified to CSA and UL Standards

Emission
Refer to emission icon beside each light insert and symbol legend for descriptions

Profile

Measurement
w 240mm (9 7/8") x ht. 48mm (1 7/8")

Housing
Anodized extruded aluminum profile available per meter and field-cuttable
Profiles have a maximum length of 3000mm (9' 10 5/16") and joined together with couplers to ensure uniform appearance and easy installation

Cutout
w 185mm (7 3/8") x Profile Length + 22mm (7/8")
Drywall Ceiling Thickness
Mounting brackets must be specified considering the ceiling thickness of 12.5mm (1/2")
Recessed Depth
h 80mm (3 1/8")

Electrical

Connections
Luminaries are pre-wired by factory

Power Feed
Located in the center of the start module with a 22mm diameter hole
3 Wires - non-dimming or phase dimming
4 Wires - two circuits of non-dimming or phase dimming
5 Wires - 0-10V dimming or dali dimming

LED Driver
External to inserts
Electronic Class 2 driver, Universal 120V/277V
Non-Dimming Driver, Phase Dimming Driver, and 0-10V Dimming Driver (10-100%)
Consult factory for driver cutsheet
If a different driver is required, please specify

Emergency Inverter Compatible
To be installed remotely, and provided by others
It can be located up to 250m away from the fixture

Emergency circuit wiring is available upon request (Isolated track with dedicated driver used for emergency circuit will connect to emergency battery pack - supplied by others)

General

Features
With a simple twist, the light cone can be aligned precisely and smoothly. The EAS allows rotation angle of 355° and a tilt angle of up to 30°. Rims of the BIONIQ covers are available in the all 29 colors

The deeper recessed channel (45mm) improves glare control and is available in all 29 colors

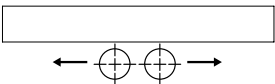
The construction of this luminaire prevents unwanted light leakage and incorporates the One Lock System to simplify assembly and maintenance. It allows the vertical rotation and horizontal tilting position to change with a single screw

Custom Requests and Additional Options
Availability depends by insert, system, and configuration
Must consult factory and allow up to 5 business days for an answer

Special beam angles, Special LEDs, RGB-W, tunable, light inserts with different outputs

Special LEDs optimize luminaries to meet different applications
Gold+ invokes a heavy golden tone intended for bread and pastries
Meat+ displays saturated red light (white parts of product will appear slightly red)
Art+ highlights pieces of art without adversely affecting the perception of individual colors
Fashion+ has the entire color spectrum brilliantly orchestrated without distorting the color temperature

Configuration
Consult factory for placement of spots
Provide configuration drawings



*Shop drawings provided upon receiving purchase order

Warranty

ZANEEN provides a limited warranty from date of purchase to original purchaser

LED Inserts : 5 year tested for 50,000 hours at 70% lumen output (L70)
LED Driver : 5 year
Non-Electrical Components : 1 year

*Check boxes to complete specification order and submit to quotes@zaneen.com to receive a formal BOM and a finalized model number

*In a constant effort to supply the best product, we reserve the right to change specifications or materials without notice. The most recent specification sheets are found at zaneen.com

2LOOK4 160 TRIMLESS SYSTEM

SPECIFICATION SHEET

| | |
|----------|--|
| PROJECT | |
| TYPE | |
| NOTES | |
| QUANTITY | |
| DATE | |

SYSTEM SUMMARY

Inserts

*Delivered lumens is the maximum possible; using widest lens, optic, or reflector

Spots

Bioniq Spots
Wattage: 14.5W - 26.4W
Lumen: 940lm - 2230lm
Color Temperature: 27K, 30K, 35K, 40K
Reflector/Lens Option: 20°, 40°, 60° / 20°, 25°, 40°
Available in 29 colors

WIRING DIAGRAMS

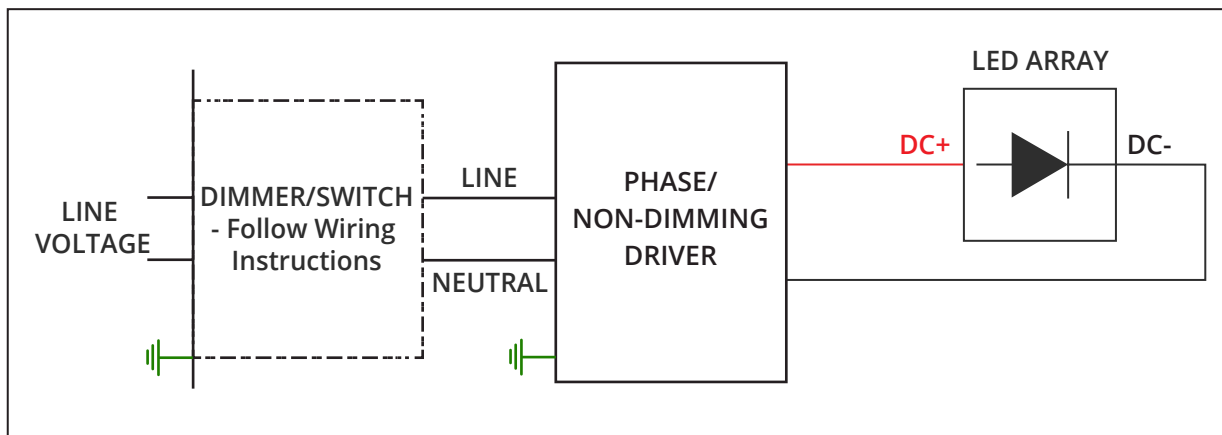
ALL ZANEEN FIXTURES ARE MANUFACTURED TO NORTH AMERICAN ELECTRICAL STANDARDS

Post Sales Support
HQ 1-800-388-3382 X 625 support@zaneen.com

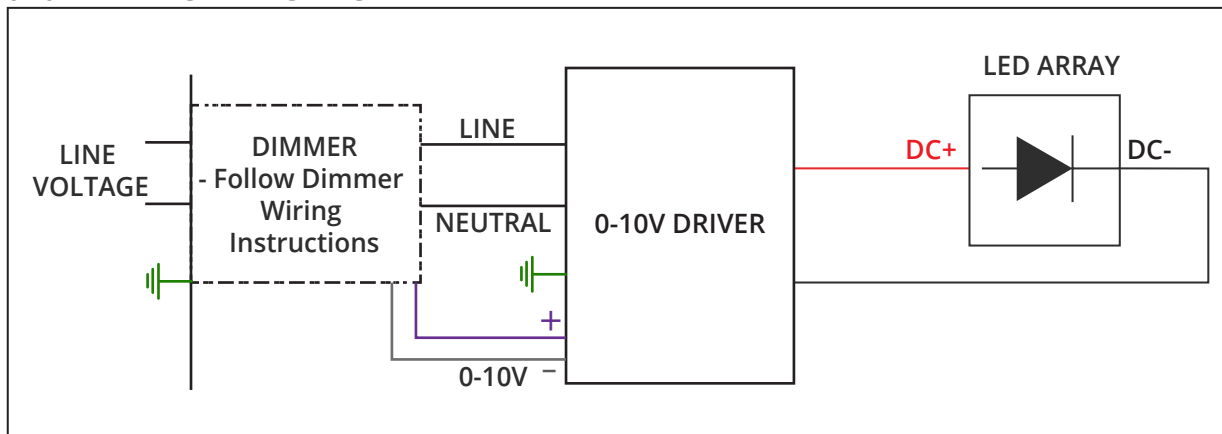
IMPORTANT:

- Do NOT connect directly to line voltage
- There is a minimum and maximum load per driver (See fixture and driver specifications).
- Fixture MUST be connected to LED driver, prior to turning power on

PHASE/NON-DIMMING WIRING DIAGRAM



0-10V DIMMING WIRING DIAGRAM





2LOOK4 160 TRIMLESS SYSTEM
SPECIFICATION SHEET

| | |
|----------|--|
| PROJECT | |
| TYPE | |
| NOTES | |
| QUANTITY | |
| DATE | |

INSERT CUSTOM DRAWING HERE OR ATTACH WITH ADDITIONAL PAGES