

2LOOK4 20 TRACK TRIMLESS SYSTEM SPECIFICATION SHEET

PROJECT	
TYPE	
NOTES	
QUANTITY	
DATE	



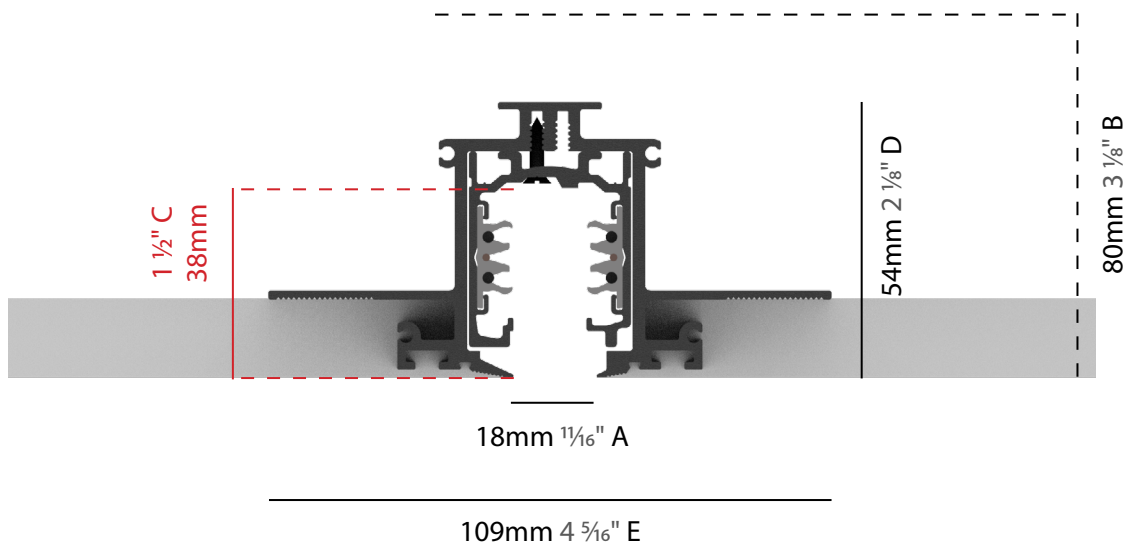
2Look4 allows you to design a minimal track system with high performance spots. The track virtually becomes invisible in the ceiling and you have enough lumen capacity to shine a retail space. The IMAGINE PLUS variant with Ø75mm is also available with CASAMBI and PUSH-DIM control including memory function.

ARCHITECTURAL | 2LOOK4 20 TRACK

2LOOK4 20 TRACK is a cutting-edge trimless system designed for seamless architectural flow and timeless aesthetics and design. A revolutionary mini 120V track system with a visible opening of just 20mm offers minimalism on a completely new level for designers. The special slim adapter can be used with IMAGINE luminaries in three different diameters and in all 28 Prolicht Colors.



SYSTEM PROFILE



A: Opening width | B: Recess depth | C: Opening depth
D: Profile height | E: Width including mounting brackets

2LOOK4 20 TRACK TRIMLESS SYSTEM
SPECIFICATION SHEET

PROJECT

TYPE

NOTES

QUANTITY

DATE

SYSTEM GUIDE

To make your product selection and complete system specification, proceed with the following:
review system options, create your system code in the field below and include your quantity.
For the inserts, use the field beside each product name.
Submit to quotes@zaneen.com to receive a formal BOM and finalized model numbers.

EXAMPLE A32L420-TRK-TRI-SYS-UNV-DN-2C-8"-S

SYSTEM BUILD CODE: A32L420-TRK-TRI-SYS-

qty

UPON REQUEST

Additional Options

Color Temperature

Beam Angle

LEDs

Lumen Outputs

CRI



ELECTRICAL

Voltage	Dimming	Circuit
UNV - 120/277V	DN - Non Dim	2C - 2 Circuit Operation
120 - 120V	DP - Phase Dim (Triac/ELV)	3C - 3 Circuit Operation
347 - 347V	DV - 0-10V (100-1%)	EMCIR - Emergency Circuit
	DD - DALI (100-1%)	

LAYOUT

Fixture Head Spacing	Run Shapes
8" - on center	S _____ ' Straight
16" - on center	L _____ 'x_____ '
24" - on center	U _____ 'x_____ 'x_____ '
CUS (XX) - Custom	R _____ 'x_____ ' Rectangle

IMAGINE

INSERT BUILD CODE EXAMPLE: A3T073-DN-27K-01-16-00
FINISHES OPTIONS: See page 6 for color options and use 2 digit numbers to indicate your choices

INSERTS

IMAGINE Ø60	A3T073-					qty			
Wattage: 13.4W	Dimming	CCT - 90 CRI	Finish	Reflector	Optics	Delivered Lumen (lm)			
	DN - Non Dim	27K - 2700K	◆ — (28 colors)	16 - 16°	00 - No optic	CCT	16°	32°	46°
	DP - Phase Dim	30K - 3000K		32 - 32°	01 - Linear Spread	2700K	768	742	709
	DV - 0-10V	35K - 3500K		46 - 46°	02 - Spread	3000K	796	769	735
		40K - 4000K			03 - Honeycomb	3500K	836	808	773
						4000K	854	825	789

IMAGINE SUPERSPOT Ø60	A3T072-					qty		
Wattage: 13.7W	Dimming	CCT - 90 CRI	Finish		Optics	Delivered Lumen (lm)		
	DN - Non Dim	27K - 2700K	◆ — (28 colors)		00 - No optic	CCT	12°	
	DP - Phase Dim	30K - 3000K			01 - Linear Spread	2700K	776	
	DV - 0-10V	35K - 3500K			02 - Spread	3000K	836	
		40K - 4000K			03 - Honeycomb	3500K	885	
						4000K	887	

2LOOK4 20 TRACK TRIMLESS SYSTEM
SPECIFICATION SHEET

PROJECT

TYPE

NOTES

QUANTITY

DATE

INSERTS

IMAGINE

FINISHES OPTIONS:
See page 6 for color options and use 2 digit numbers to indicate your choices

IMAGINE Ø75	A3T075-						qty		
	Wattage: 19W	Dimming	CCT - 90 CRI	Finish	Reflector	Optics	Delivered Lumen (lm)		
		DN - Non Dim	27K - 2700K	◆ — (28 colors)	16 - 16°	00 - No optic	CCT	16°	32°
		DP - Phase Dim	30K - 3000K		32 - 32°	01 - Linear Spread	2700K	1460	1432
		DV - 0-10V	35K - 3500K			02 - Spread	3000K	1521	1492
			40K - 4000K			03 - Honeycomb	3500K	1585	1555
							4000K	1656	1624

IMAGINE SUPERSPOT Ø75	A3T074-						qty	
	Wattage: 13.7W	Dimming	CCT - 90 CRI	Finish		Optics	Delivered Lumen (lm)	
		DN - Non Dim	27K - 2700K	◆ — (28 colors)		00 - No optic	CCT	12°
		DP - Phase Dim	30K - 3000K			01 - Linear Spread	2700K	1124
		DV - 0-10V	35K - 3500K			02 - Spread	3000K	1210
			40K - 4000K			03 - Honeycomb	3500K	1281
							4000K	1284

IMAGINE PLUS Ø75	A3T124-						qty		
	Wattage: 19W	Dimming	CCT - 90 CRI	Finish	Reflector	Optics	Delivered Lumen (lm)		
		DN - Non Dim	27K - 2700K	◆ — (28 colors)	16 - 16°	00 - No optic	CCT	16°	32°
		DP - Phase Dim	30K - 3000K		32 - 32°	01 - Linear Spread	2700K	1460	1432
		DV - 0-10V	35K - 3500K			02 - Spread	3000K	1521	1492
			40K - 4000K			03 - Honeycomb	3500K	1585	1555
							4000K	1656	1624

IMAGINE PLUS SUPERSPOT Ø75	A3T123-						qty	
	Wattage: 13.7W	Dimming	CCT - 90 CRI	Finish		Optics	Delivered Lumen (lm)	
		DN - Non Dim	27K - 2700K	◆ — (28 colors)		00 - No optic	CCT	12°
		DP - Phase Dim	30K - 3000K			01 - Linear Spread	2700K	1124
		DV - 0-10V	35K - 3500K			02 - Spread	3000K	1210
			40K - 4000K			03 - Honeycomb	3500K	1281
							4000K	1284

2LOOK4 20 TRACK TRIMLESS SYSTEM
SPECIFICATION SHEET

PROJECT

TYPE

NOTES


QUANTITY

DATE

INSERTS

IMAGINE

FINISHES OPTIONS:
See page 6 for color options and use 2 digit numbers to indicate your choices

IMAGINE Ø90	A3T077-						qty			
Wattage: 27.6W	Dimming	CCT - 90 CRI	Finish	Reflector	Optics	Delivered Lumen (lm)				
	DN - Non Dim	27K -2700K	◆ ____	14 - 14°	00 - No optic	CCT	14°	24°	32°	
	DP - Phase Dim	30K - 3000K	(28 colors)	24 - 24°	01 - Linear Spread	2700K	2045	1967	1917	
	DV - 0-10V	35K - 3500K		32 - 32°	02 - Spread	3000K	2129	2047	1995	
		40K - 4000K			03 - Honeycomb	3500K	2234	2149	2095	
						4000K	2301	2212	2157	

IMAGINE SUPERSPOT Ø90	A3T076-					qty	
Wattage: 13.7W	Dimming	CCT - 90 CRI	Finish	Optics	Delivered Lumen (lm)		
	DN - Non Dim	27K -2700K	◆ ____	00 - No optic	CCT	6°	
	DP - Phase Dim	30K - 3000K	(28 colors)	01 - Linear Spread	2700K	846	
	DV - 0-10V	35K - 3500K		02 - Spread	3000K	911	
		40K - 4000K		03 - Honeycomb	3500K	964	
					4000K	967	

2LOOK4 20 TRACK TRIMLESS SYSTEM

SPECIFICATION SHEET

PROJECT	
TYPE	
NOTES	
QUANTITY	
DATE	

SYSTEM SUMMARY

System

Type
Trimless (Non-IC type)
Rated for Dry Locations Ceiling Mounted

Approval Status
CSA Certified to CSA and UL Standards

Emission
Refer to emission icon beside each light insert and symbol legend for descriptions

Profile

Measurement
w 109mm (4 1⁄8") x ht. 54mm (2 1⁄8")

Housing
Anodized extruded aluminum profile available per meter and field-cuttable
Profiles have a maximum length of 3000mm (9' 10 5⁄16") and joined together with couplers to ensure uniform appearance and easy installation

Cutout
w 60mm (2 3⁄8") x Profile Length + 8mm (5⁄16")
Drywall Ceiling Thickness
Mounting brackets must be specified considering the ceiling thickness of 12.5mm (1⁄2")
Recessed Depth
h 80mm (3 1⁄8")

Electrical

Connections
Luminaries are pre-wired by factory with track adapters

Power Feed
Located on the end power supply (22mm diameter hole)
If a different location is required, please specify
3 Wires - non-dimming or phase dimming
4 Wires - two circuits of non-dimming or phase dimming
5 Wires - 0-10V dimming or dali dimming

LED Driver
Integrated with inserts
Electronic Class 2 driver, Universal 120V/277V
Non Dimming Driver, Dimming Driver 0-10V (10-100%)
Consult factory for driver cutsheet
If a different driver is required, please specify

Emergency Inverter Compatible
To be installed remotely, and provided by others
It can be located up to 250m away from the fixture

Emergency circuit wiring is available upon request (Isolated track with dedicated driver used for emergency circuit will connect to emergency battery pack - supplied by others)

General

Features
A revolutionary mini 120V track system with a visible opening of just 20mm offers minimalism on a completely new level for designers.

The special slim adapter can be used with track lights in three sizes 60, 75, and 90mm diameter up to more than 2440lm.

The high performance of this spotlight is superbly glare-free. A black anti-glare tube on the light output side ensures optimal visual comfort.

The Imagine spotlights are characterized by their adjust-ability. A special articulated arm allows rotation of 350 degrees and inclination of up to 90 degrees.

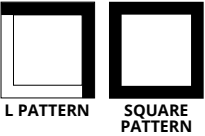
The linear spread lens has the light cone can stretched into a long oval, perfect for passages and corridors without projecting arcs onto the walls. A diffuser or spread lens made of structured, toughened glass softens the accentuating light of a spotlight and thus reduces the sharp delineation of the arc. A honeycomb grid can be used to reduce glare and can be combined with both the spread and linear spread lens.

Custom Requests and Additional Options
Availability depends by insert, system, and configuration
Must consult factory and allow up to 5 business days for an answer

Special beam angles, individual sizes, Special LEDs, light inserts with different outputs

Special LEDs optimize luminaries to meet different applications
Gold+ invokes a heavy golden tone intended for bread and pastries
Meat+ displays saturated red light (white parts of product will appear slightly red)
Art+ highlights pieces of art without adversely affecting the perception of individual colors
Fashion+ has the entire color spectrum brilliantly orchestrated without distorting the color temperature

Configuration
Consult factory for patterns or custom designs
Provide configuration drawings



*Shop drawings provided upon receiving purchase order

Warranty

ZANEEN provides a limited warranty from date of purchase to original purchaser

LED Inserts: 5 year tested for 50,000 hours at 70% lumen output (L70)
LED Driver: 5 year
Non-Electrical Components: 1 year

*Check boxes to complete specification order and submit to quotes@zaneen.com to receive a formal BOM and a finalized model number

*In a constant effort to supply the best product, we reserve the right to change specifications or materials without notice. The most recent specification sheets are found at zaneen.com

2LOOK4 20 TRACK TRIMLESS SYSTEM

SPECIFICATION SHEET

PROJECT	
TYPE	
NOTES	
QUANTITY	
DATE	

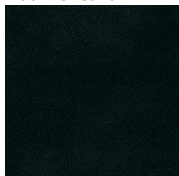
FINISH COLORS



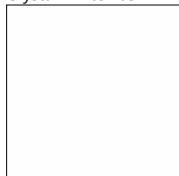
Sparkling Silver - 01



Black Velvet - 02



Crystal White - 03



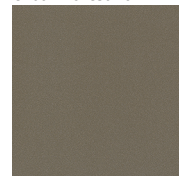
Creamy - 04



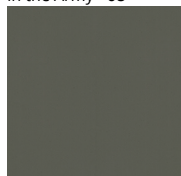
Hampton Bay - 05



Urban Forest - 07



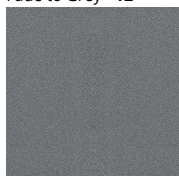
In the Army - 08



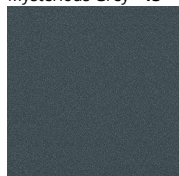
Rusty Angel - 09



Fade to Grey - 12



Mysterious Grey - 13



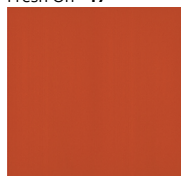
Lost Dream - 15



Purple Sky - 16



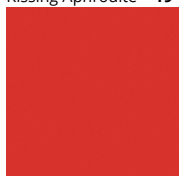
Fresh Oh - 17



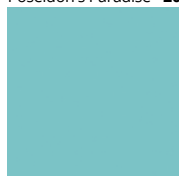
Funky P - 18



Kissing Aphrodite - 19



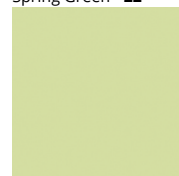
Poseidon's Paradise - 20



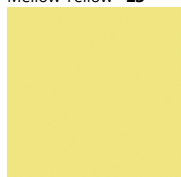
Blue Sky - 21



Spring Green - 22



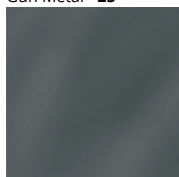
Mellow Yellow - 23



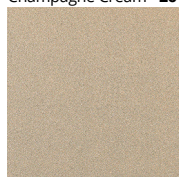
Golden Heart - 24



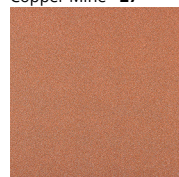
Gun Metal - 25



Champagne Cream - 26



Copper Mine - 27



Ancient Bronze - 28



Jazz Gold - 29



Olive Breeze - 30



Moonlight Silver - 31



Rosewood Red - 32



Digital: Not all screens are calibrated the same, and therefore, colors will appear differently between screens.

Physical: When texture is involved, there will be variations in color, character and tone within a product series and between product families.

Gun Metal: No Gun Metal finish is alike. It combines a mixture of transparent and black color particles which ensures a highly individual effect and no luminaire being identical.

Champagne Cream, Copper Mine, Ancient Bronze + Jazz Gold: These finishes have slight fading from specific powder coating production. Each luminaire will slightly vary.

RAL Color Upon Request



2LOOK4 20 TRACK TRIMLESS SYSTEM

SPECIFICATION SHEET

PROJECT	
TYPE	
NOTES	
QUANTITY	
DATE	

LEGEND

	floor-mounted		pivotal		special LED (upon request) RGB, RGBW, tunable, gold+, meat+, art+, fashion+
	wall and ceiling: recessed and surface mounted		rotating		warm dim / natural dimming LED
	ceiling-mounted and wall-mounted		illuminate tilted		rechargeable battery powered
	wall-mounted		color of suspension cable		fixture with natural vivid LED (upon request)
	omni-directional light distribution		length of suspension cable		color rendering index
	direct light distribution		reflector degree selection		color temperature
	direct/indirect light distribution		super spot		lumen (luminous flux)
	indirect light distribution		lens		efficacy (lumens per watt)
	asymmetric light distribution		lens pack		Unified Glare Rating (UGR) range from 5-40
	aura light distribution		shine ring		marine grade (AISI 316 stainless steel)
	round wall or ceiling cut-out		integrated shine ring with diffuser		walk on
	square wall or ceiling cut-out		free individual colors 01-29		drive on
	the supplied jig specifies the cutout dimensions		individual colors: 00 (free of charge), 01-25 (extra charge)		Dark Sky Compliance
	minimum distance (meters) lamp - object		luminaire part to be colored (F1)		Americans with Disabilities Act (less than 4" off the wall located between 27"-84" from floor)
	recessed depth		luminaire part to be colored (F2)		lamp protected against explosion
	ceiling thickness in mm		luminaire part to be colored (F3)		blown glass using traditional methods by master glass blower
	ceiling thickness selection		luminaire part to be colored (F4)		acoustic material
	dimmable DP (phase), DV (0-10V), DD (dali), DS (step-dim)		luminaire part to be colored (F5)		protection class I, protection insulation
	included or excluded LED driver/transformer/control gear		color of 3-circuit adaptor		protection class II, protection insulation
	separately switchable		indirect diffuser		ETL Certified to UL and CSA Standards
	sensor		direct diffuser		UL Certified to UL and CSA Standards
	remote control		ball-proof (upon request)		CSA Certified to UL and CSA Standards
	available upon request		accessory		Certified for North American Standards

IP RATING

	protected against ingress of solid bodies greater than 12.5mm (finger)
	protected against ingress of solid bodies greater than 2.5mm protected against sprays of water up to 60 degrees from the vertical (rain)
	protected against ingress of solid bodies greater than 1mm (wire) no protection against the ingress of moisture
	protected against ingress of solid bodies greater than 1mm (wire) protected against sprays of water up to 60 degrees from the vertical (rain)
	protected against ingress of solid bodies greater than 1mm (wire) protected against water splashed from all directions
	protected against limited ingress of dust (wet rooms/covered outdoor areas) protected against water splashed from all directions
	protected against ingress of dust protected against jets of water
	protected against ingress of dust protected against powerful jets of water or heavy seas
	protected against ingress of dust protected against immersion of water between 15cm - 1m for 30 minutes
	protected against ingress of dust protected against immersion of water under pressure for long periods

IK RATING

	protected against 0.14 joules impact (equivalent to 0.25kg mass dropped from 56mm above the surface)
	protected against 0.2 joules impact (equivalent to 0.25kg mass dropped from 80mm above the surface)
	protected against 0.35 joules impact (equivalent to 0.25kg mass dropped from 140mm above the surface)
	protected against 0.5 joules impact (equivalent to 0.25kg mass dropped from 200mm above the surface)
	protected against 0.7 joules impact (equivalent to 0.25kg mass dropped from 280mm above the surface)
	protected against 1 joules impact (equivalent to 0.25kg mass dropped from 400mm above the surface)
	protected against 2 joules impact (equivalent to 0.5kg mass dropped from 400mm above the surface)
	protected against 5 joules impact (equivalent to 1.7kg mass dropped from 300mm above the surface)
	protected against 10 joules impact (equivalent to 5.0kg mass dropped from 200mm above the surface)
	protected against 20 joules impact (equivalent to 5.0kg mass dropped from 400mm above the surface)

WIRING DIAGRAMS

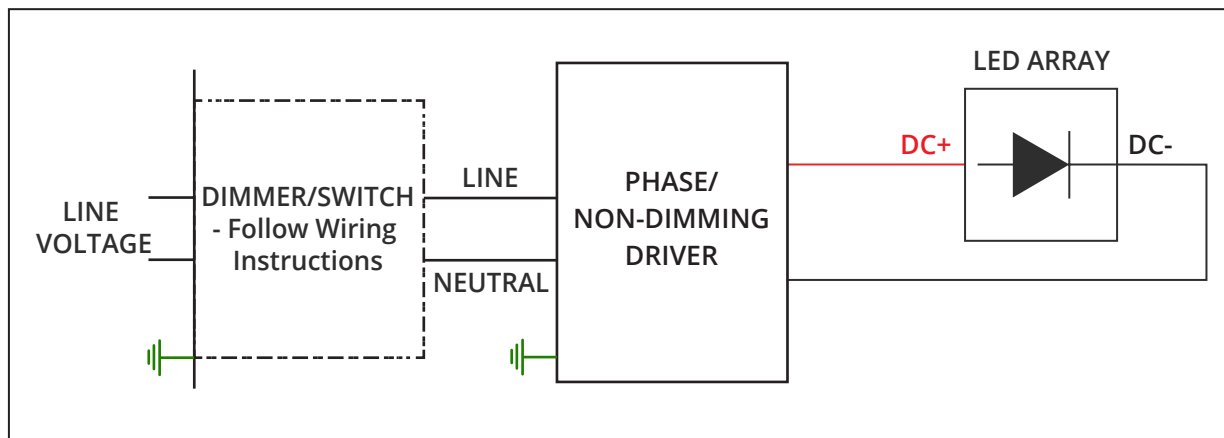
ALL ZANEEN FIXTURES ARE MANUFACTURED TO NORTH AMERICAN ELECTRICAL STANDARDS

Post Sales Support
HQ 1-800-388-3382 X 625 support@zaneen.com

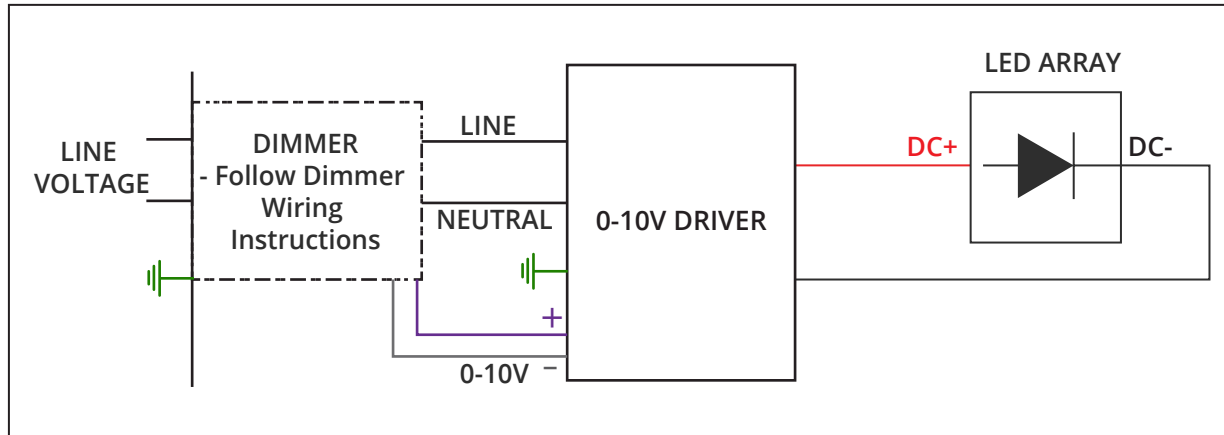
IMPORTANT

- Do NOT connect directly to line voltage
- There is a minimum and maximum load per driver (See fixture and driver specifications).
- Fixture MUST be connected to LED driver, prior to turning power on

PHASE/NON-DIMMING WIRING DIAGRAM



0-10V DIMMING WIRING DIAGRAM





2LOOK4 20 TRACK TRIMLESS SYSTEM
SPECIFICATION SHEET

PROJECT

TYPE

NOTES

QUANTITY

DATE

Insert custom drawing here or attach with additional pages

