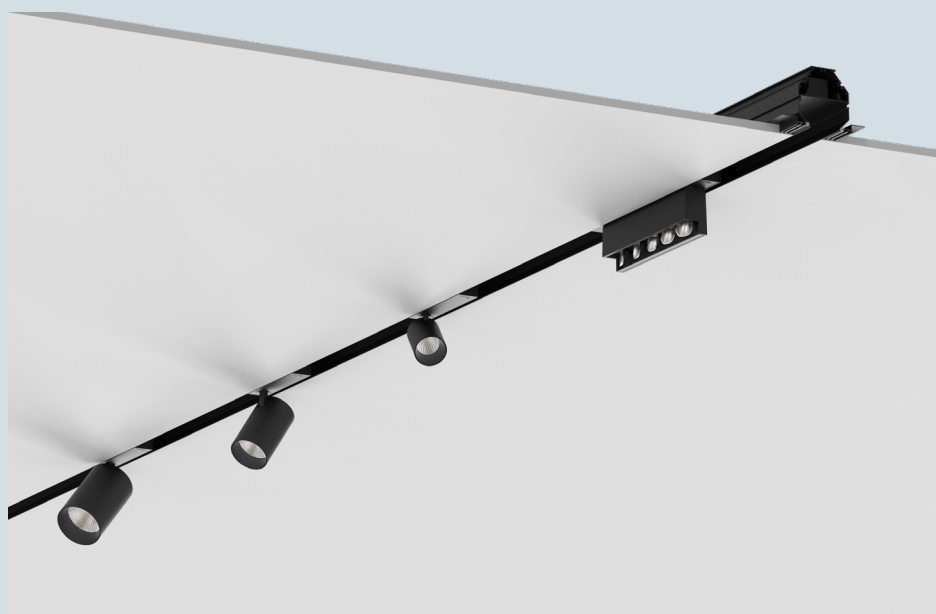


2LOOK4 50 TRACK TRIMLESS SYSTEM

SPECIFICATION SHEET

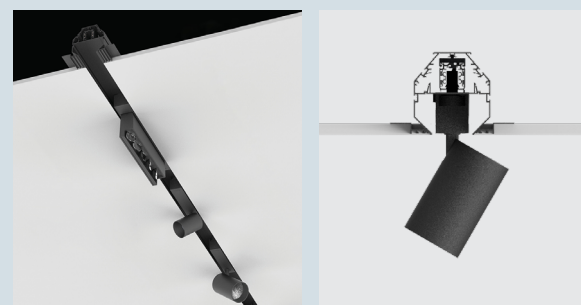
| | |
|----------|--|
| PROJECT | |
| TYPE | |
| NOTES | |
| QUANTITY | |
| DATE | |



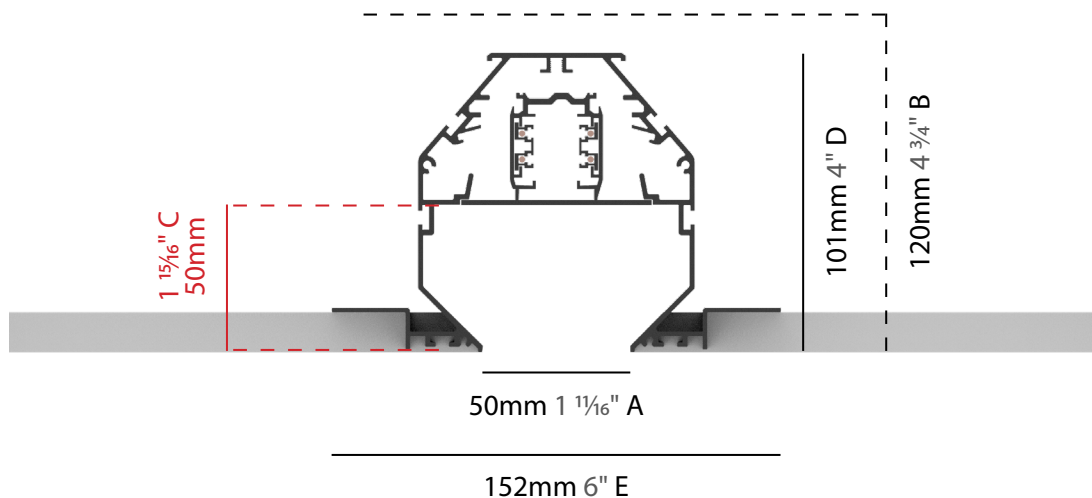
To compensate for on-site tolerances the Magiq Plus Wallwasher can be adjusted in increments of 5° to a max. of 15° to the vertical - necessary for long shelves or corridors.

ARCHITECTURAL | 2LOOK4 50 TRACK

The 2LOOK4 50 TRACK profile system is characterized by the typical razor-sharp, minimalist design. In the recessed 120V rail, the driver housing for the track lights is flush with the ceiling. With the MAGIQ PLUS WALLWASH inserts and the CENTRIQ IN and OIKO PRO IN spotlights, the 2LOOK4 50 TRACK system meets even the most complex lighting concept requirements.



SYSTEM PROFILE



A: Opening width | B: Recess depth | C: Opening depth
D: Profile height | E: Width including mounting brackets

2LOOK4 50 TRACK TRIMLESS SYSTEM
SPECIFICATION SHEET

PROJECT

TYPE

NOTES

QUANTITY

DATE

SYSTEM GUIDE

To make your product selection and complete system specification, proceed with the following:
review system options, create your system code in the field below and include your quantity.
For the inserts, use the field beside each product name.
Submit to quotes@zaneen.com to receive a formal BOM and finalized model numbers.

EXAMPLE A32L450-TRK-TRI-SYS-UNV-DN-2C-1'-S

SYSTEM BUILD CODE: A32L450-TRK-TRI-SYS-

qty

UPON REQUEST

Additional Options

Color Temperature

Beam Angle

LEDs

Lumen Outputs

CRI



ELECTRICAL

| Voltage | Dimming | Circuit |
|----------------|---------------------|---------------------------|
| UNV - 120/277V | DN - Non Dim | 2C - 2 Circuit Operation |
| 120 - 120V | DV - 0-10V (100-1%) | 3C - 3 Circuit Operation |
| 347 - 347V | DD- DALI (100-1%) | EMCIR - Emergency Circuit |

LAYOUT

| Fixture Head Spacing | Run Shapes |
|---|------------------------------|
| 1' - on center | S _____ ' Straight |
| 2' - on center | L _____ 'x _____ ' |
| 4' - on center | U _____ 'x _____ 'x _____ ' |
| CUS (XX) - Custom | R _____ 'x _____ ' Rectangle |
| Spotlights - Minimum distance of 11" Wallwashers - see recommended distances at page 7 | |

CENTRIQ IN

INSERT BUILD CODE EXAMPLE: A3T294-DN-27K-01-01-02-24-00
FINISHES OPTIONS: See page 9 for color options and use 2 digit numbers to indicate your choices

INSERTS

| CENTRIQ IN Ø65 | | A3T294- | | | | qty | | | | |
|----------------|--------------|-------------|------------------------|----------|--------------------|--------|----------------------|------|------|--|
| Wattage: 23W | | Dimming | CCT - 90 CRI | Finish | Reflector | Optics | Delivered Lumen (lm) | | | |
| | DN - Non Dim | 27K -2700K | ◆ _____ | 24 - 24° | 00 - No optic | CCT | 24° | 36° | 52° | |
| | DV - 0-10V | 30K - 3000K | ▲ _____ (27 colors) | 36 - 36° | 01 - Linear Spread | 2700K | 1946 | 2016 | 1975 | |
| | | 35K - 3500K | ◻ _____ (2 colors) | 52 - 52° | 02 - Spread | 3000K | 2026 | 2099 | 2056 | |
| | | 40K - 4000K | | | 03 - Honeycomb | 3500K | 2113 | 2189 | 2145 | |
| | | | | | | 4000K | 2211 | 2291 | 2245 | |

CENTRIQ IN SUPERSPOT Ø65

A3T295-

| Wattage: 21.1W | Dimming | CCT - 90 CRI | Finish | Optics | qty | |
|----------------|--------------|--------------|------------------------|--------------------|-------|------|
| | DN - Non Dim | 27K - 2700K | ◆ _____ | 00 - No optic | CCT | 12° |
| | DV - 0-10V | 30K - 3000K | ▲ _____ (27 colors) | 01 - Linear Spread | 2700K | 1483 |
| | | 35K - 3500K | □ _____ (2 colors) | 02 - Spread | 3000K | 1465 |
| | | 40K - 4000K | | 03 - Honeycomb | 3500K | 1553 |
| | | | | | 4000K | 1554 |

2LOOK4 50 TRACK TRIMLESS SYSTEM

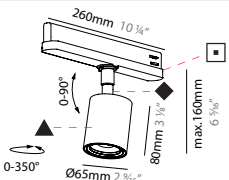
SPECIFICATION SHEET

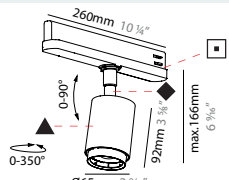
| | |
|----------|--|
| PROJECT | |
| TYPE | |
| NOTES | |
| QUANTITY | |
| DATE | |

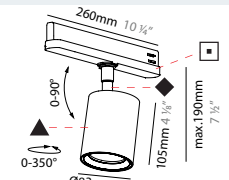
INSERTS


CENTRIQ IN


FINISHES OPTIONS:
See page 9 for color options and use 2 digit numbers to indicate your choices

| CENTRIQ IN SUPERSPOT Ø65 TW | A3xxxx- | qty |
|---|--|--|
| Wattage: 8.2W | Finish | Optics |
|  | ◆ — ▲ — (27 colors) □ — (2 colors) | 00 - No optic 01 - Linear Spread 02 - Spread 03 - Honeycomb |
| | | Delivered Lumen (lm) |
| | | TUNABLE WHITE 2700K - 6500K (MAX) |
| | | 12° 564 |

| CENTRIQ IN FLEX Ø65 | A3T220- | qty |
|---|----------------------------|--|
| Wattage: 21.1W | Dimming | CCT - 90 CRI |
|  | DN - Non Dim DV - 0-10V | 27K - 2700K 30K - 3000K 35K - 3500K 40K - 4000K |
| | | Finish |
| | | Delivered Lumen (lm) |
| | | CCT 14° - 44° |
| | | 2700K 1205 - 1127 |
| | | 3000K 1298 - 1214 |
| | | 3500K 1376 - 1287 |
| | | 4000K 1377 - 1288 |

| CENTRIQ IN Ø83 | A3T218- | qty |
|---|----------------------------|--|
| Wattage: 36.2W | Dimming | CCT - 90 CRI |
|  | DN - Non Dim DV - 0-10V | 27K - 2700K 30K - 3000K 35K - 3500K 40K - 4000K |
| | | Finish |
| | | Reflector |
| | | Optics |
| | | Delivered Lumen (lm) |
| | | CCT 20° 32° 54° |
| | | 2700K 2923 3030 2916 |
| | | 3000K 3044 3156 3037 |
| | | 3500K 3173 3290 3166 |
| | | 4000K 3328 3450 3320 |

| CENTRIQ IN Ø83 TW | A3xxxx- | qty |
|---|--|--------------------------------------|
| Wattage: 34.9W | Finish | Reflector |
|  | ◆ — ▲ — (27 colors) □ — (2 colors) | 24 - 24° 34 - 34° 54 - 54° |
| | | Optics |
| | | Delivered Lumen (lm) |
| | | TUNABLE WHITE 2700K - 6500K (MAX) |
| | | 24° 2893 |
| | | 34° 2907 |
| | | 54° 2805 |

| CENTRIQ IN SUPERSPOT Ø83 | A3T217- | qty |
|---|----------------------------|--|
| Wattage: 25.7W | Dimming | CCT - 90 CRI |
|  | DN - Non Dim DV - 0-10V | 27K - 2700K 30K - 3000K 35K - 3500K 40K - 4000K |
| | | Finish |
| | | Optics |
| | | Delivered Lumen (lm) |
| | | CCT 12° |
| | | 2700K 1609 |
| | | 3000K 1733 |
| | | 3500K 1838 |
| | | 4000K 1839 |

2LOOK4 50 TRACK TRIMLESS SYSTEM

SPECIFICATION SHEET

| | |
|----------|--|
| PROJECT | |
| TYPE | |
| NOTES | |
| QUANTITY | |
| DATE | |

INSERTS

CENTRIQ IN

FINISHES OPTIONS:
See page 9 for color options and use 2 digit numbers to indicate your choices

| CENTRIQ IN SUPERSPOT Ø83 TW | A3xxxx- | qty | |
|-----------------------------|---|--|--|
| Wattage: 8.2W | Finish | Optics | Delivered Lumen (lm) |
| | ◆ ____ ▲ ____ (27 colors) □ ____ (2 colors) | 00 - No optic 01 - Linear Spread 02 - Spread 03 - Honeycomb | TUNABLE WHITE 2700K - 6500K (MAX) 10° 569 |

| CENTRIQ IN FLEX Ø83 | A3T221- | qty | |
|---------------------|--|--|--|
| Wattage: 21.1W | Dimming | CCT - 90 CRI | Finish |
| | DN - Non Dim DV - 0-10V | 27K - 2700K 30K - 3000K 35K - 3500K 40K - 4000K | (27 colors) (2 colors) |
| | | | Delivered Lumen (lm) CCT 14° - 44° 2700K 1314 - 1229 3000K 1298 - 1214 3500K 1376 - 1287 4000K 1377 - 1288 |

| CENTRIQ IN FLEX Ø83 TW | A3xxxx- | qty | |
|------------------------|---|---|--|
| Wattage: 8.2W | Finish | Delivered Lumen (lm) | |
| Same as drawing above | ◆ ____ ▲ ____ □ ____ (27 colors) (2 colors) | TUNABLE WHITE 2700K - 6500K (MAX) 14° - 46° 479 - 451 | |

MAGIQ PLUS WALLWASH

| MAGIQ PLUS WALLWASH BLACK | A3T062- | qty | |
|---------------------------|--|--|---|
| Wattage: 44.7W | Dimming | CCT - 90 CRI | Finish |
| | DN - Non Dim DV - 0-10V | 27K - 2700K 30K - 3000K 35K - 3500K 40K - 4000K | (27 colors) (2 colors) |
| | | | Delivered Lumen (lm) 2700K 2844 3000K 3025 3500K 3251 4000K 3431 |

| MAGIQ PLUS WALLWASH WHITE | A3T065- | qty | |
|---------------------------|--|--|---|
| Wattage: 44.7W | Dimming | CCT - 90 CRI | Finish |
| | DN - Non Dim DV - 0-10V | 27K - 2700K 30K - 3000K 35K - 3500K 40K - 4000K | (27 colors) (2 colors) |
| | | | Delivered Lumen (lm) 2700K 2844 3000K 3025 3500K 3251 4000K 3431 |

2LOOK4 50 TRACK TRIMLESS SYSTEM

SPECIFICATION SHEET

PROJECT _____

TYPE _____

NOTES _____

QUANTITY _____

DATE _____

INSERTS

OIKO PRO IN

FINISHES OPTIONS:
See page 9 for color options and use 2 digit numbers to indicate your choices

| OIKO PRO IN 34° | A3T203- | qty | |
|-----------------------|--|----------------------|-----------------------|
| Wattage: 19.3W | Dimming | CCT - 90 CRI | Delivered Lumen (lm) |
| | DN - Non Dim | 27K - 2700K | CCT 34° |
| | DV - 0-10V | 30K - 3000K | 2700K 1510 |
| | | 35K - 3500K | 3000K 1517 |
| | | 40K - 4000K | 3500K 1588 |
| | | | 4000K 1603 |
| | <div> <div>◆</div> <div>▲</div> <div>◻</div> </div> <div>(27 colors)</div> <div>(2 colors)</div> | | |
| OIKO PRO IN 34° TW | A3xxxx- | qty | |
| Wattage: 14.4W | Finish | Delivered Lumen (lm) | |
| Same as drawing above | <div> <div>◆</div> <div>▲</div> <div>◻</div> </div> <div>(27 colors)</div> <div>(2 colors)</div> | TUNABLE WHITE | |
| | | 2700K - 6500K (MAX) | |
| | | 34° | 1081 |
| OIKO PRO IN 50° | A3T204- | qty | |
| Wattage: 19.3W | Dimming | CCT - 90 CRI | Delivered Lumen (lm) |
| | DN - Non Dim | 27K - 2700K | CCT 50° |
| | DV - 0-10V | 30K - 3000K | 2700K 1656 |
| | | 35K - 3500K | 3000K 1665 |
| | | 40K - 4000K | 3500K 1743 |
| | | | 4000K 1759 |
| | <div> <div>◆</div> <div>▲</div> <div>◻</div> </div> <div>(27 colors)</div> <div>(2 colors)</div> | | |
| OIKO PRO IN 50° TW | A3xxxx- | qty | |
| Wattage: 14.4W | Finish | Delivered Lumen (lm) | |
| Same as drawing above | <div> <div>◆</div> <div>▲</div> <div>◻</div> </div> <div>(27 colors)</div> <div>(2 colors)</div> | TUNABLE WHITE | |
| | | 2700K - 6500K (MAX) | |
| | | 50° | 1186 |
| OIKO PRO IN 60° | A3T205- | qty | |
| Wattage: 19.3W | Dimming | CCT - 90 CRI | Delivered Lumen (lm) |
| | DN - Non Dim | 27K - 2700K | CCT 60° |
| | DV - 0-10V | 30K - 3000K | 2700K 1820 |
| | | 35K - 3500K | 3000K 1829 |
| | | 40K - 4000K | 3500K 1914 |
| | | | 4000K 1932 |
| | <div> <div>◆</div> <div>▲</div> <div>◻</div> </div> <div>(27 colors)</div> <div>(2 colors)</div> | | |
| OIKO PRO IN 62° TW | A3xxxx- | qty | |
| Wattage: 14.4W | Finish | Delivered Lumen (lm) | |
| Same as drawing above | <div> <div>◆</div> <div>▲</div> <div>◻</div> </div> <div>(27 colors)</div> <div>(2 colors)</div> | TUNABLE WHITE | |
| | | 2700K - 6500K (MAX) | |
| | | 62° | 1381 |

2LOOK4 50 TRACK TRIMLESS SYSTEM
SPECIFICATION SHEET

PROJECT

TYPE

NOTES

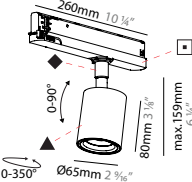
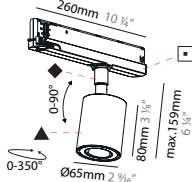
QUANTITY

DATE

INSERTS

OIKO PRO IN

FINISHES OPTIONS:
See page 9 for color options and use 2 digit numbers to indicate your choices

| OIKO PRO IN SUPERSPOT | | A3T226- | | qty | | |
|---|---------------|--------------|---------------------|-------------|----------------------|------|
| Wattage: 21.1W | | Dimming | CCT - 90 CRI | Finish | Delivered Lumen (lm) | |
|  | | DN - Non Dim | 27K -2700K | ◆ ____ | CCT | 14° |
| | | DV - 0-10V | 30K - 3000K | ▲ ____ | 2700K | 1394 |
| | | | 35K - 3500K | (27 colors) | 3000K | 1377 |
| | | | 40K - 4000K | ▣ ____ | 3500K | 1459 |
| | | | | (2 colors) | 4000K | 1461 |
| OIKO PRO IN WALLWASH | | A3T206- | | qty | | |
| Wattage: 19.3W | | Dimming | CCT - 90 CRI | Finish | Delivered Lumen (lm) | |
|  | | DN - Non Dim | 27K -2700K | ◆ ____ | 2700K | 1624 |
| | | DV - 0-10V | 30K - 3000K | ▲ ____ | 3000K | 1632 |
| | | | 35K - 3500K | (27 colors) | 3500K | 1708 |
| | | | 40K - 4000K | ▣ ____ | 4000K | 1724 |
| | | | | (2 colors) | | |
| OIKO PRO IN WALLWASH TW | | A3xxxx- | | qty | | |
| Wattage: 14.4W | | Finish | | | Delivered Lumen (lm) | |
| Same as drawing above | ◆ ____ ▲ ____ | ▣ ____ | TUNABLE WHITE | | | |
| | (27 colors) | (2 colors) | 2700K - 6500K (MAX) | | | |
| | | | 1162 | | | |

2LOOK4 50 TRACK TRIMLESS SYSTEM
SPECIFICATION SHEET

PROJECT

TYPE

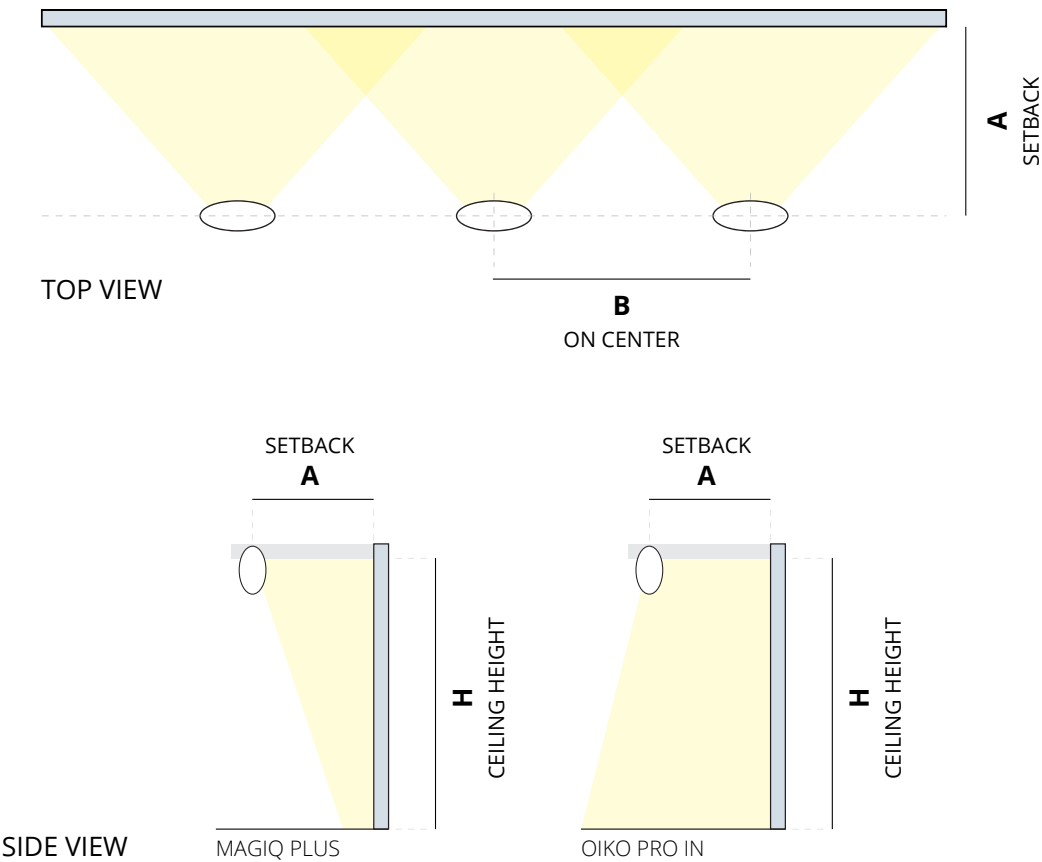
NOTES

QUANTITY

DATE

RECOMMENDED WALLWASH DISTANCES

Simplified diagrams - it does not reflect the specific photometry of the inserts.
Setback and on center spacing depends on the color and texture of your walls.
The calculations below were completed with a white wall.



| MAGIQ WALLWASH PLUS | | | OIKO PRO IN WALLWASH | | |
|---------------------|-----------|-----------|----------------------|---------------|-------------|
| H | A | B | H | A | B |
| 9' 10" | 38" - 41" | 46" - 54" | 7' 6.5" | 18.5" - 30" | 27.5" - 45" |
| 11' 6" | 41" - 46" | 54" - 62" | 8' 2.5" | 19.5" - 33.5" | 29.5" - 49" |
| 13' | 46" - 54" | 62" - 69" | 8' 10" | 21.5" - 35.5" | 31.5" - 53" |
| 14' 9" | 54" - 62" | 69" - 77" | 9' 10" | 23.5" - 39" | 35.5" - 59" |

2LOOK4 50 TRACK TRIMLESS SYSTEM

SPECIFICATION SHEET

| |
|----------|
| PROJECT |
| TYPE |
| NOTES |
| QUANTITY |
| DATE |

SYSTEM SUMMARY

System

Type
Trimless (Non-IC type)
Rated for Dry Locations Ceiling Mounted

Approval Status
Certified to North American Standards

Emission
Refer to emission icon beside each light insert and symbol legend for descriptions

Profile

Measurement
w 152mm (6") x ht. 101mm (4")

Housing
Anodized extruded aluminum profile available per meter and field-cuttable
Profiles have a maximum length of 3000mm (9' 10 5/8") and joined together with couplers to ensure uniform appearance and easy installation

Cutout
w 105mm (4 1/8") x Profile Length + 8mm (5/16")
Drywall Ceiling Thickness
Mounting brackets must be specified considering the ceiling thickness of 12.5mm (1/2")
Recessed Depth
h 120mm (4 3/4")

Electrical

Connections
Luminaries are pre-wired by factory

Power Feed
Located on the end power supply (22mm diameter hole)
3 Wires - non-dimming or phase dimming
4 Wires - two circuits of non-dimming or phase dimming
5 Wires - 0-10V dimming or dali dimming

LED Driver
Integrated with inserts
Electronic Class 2 driver, Universal 120V/277V
Non Dimming Driver, Dimming Driver 0-10V (10-100%)
Consult factory for driver cutsheet
If a different driver is required, please specify

Emergency Inverter Compatible
To be installed remotely, and provided by others
It can be located up to 250m away from the fixture

Emergency circuit wiring is available upon request (Isolated track with dedicated driver used for emergency circuit will connect to emergency battery pack - supplied by others)

General

Features
The housing of the adjustable track spotlights for all sizes is flush mounted in the ceiling In order to be able to compensate for on-site tolerances, the Magiq Plus Wallwasher can be adjusted in increments of 5° to a maximum of 15° to the vertical. This is often necessary for long shelves or corridors.

A sophisticated unlocking system in the reflector base that allows rotation through 180° with subsequent locking allows this spotlight to be used on either side of a 3-phase track.

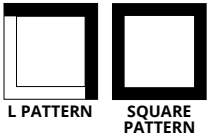
The linear spread lens has the light cone can stretched into a long oval, perfect for passages and corridors without projecting arcs onto the walls. A diffuser or spread lens made of structured, toughened glass softens the accentuating light of a spotlight and thus reduces the sharp delineation of the arc. A honeycomb grid can be used to reduce glare and can be combined with both the spread and linear spread lens.

Custom Requests and Additional Options
Availability depends by insert, system, and configuration
Must consult factory and allow up to 5 business days for an answer

Special beam angles, individual sizes, Special LEDs, light inserts with different outputs

Special LEDs optimize luminaries to meet different applications
Gold+ invokes a heavy golden tone intended for bread and pastries
Meat+ displays saturated red light (white parts of product will appear slightly red)
Art+ highlights pieces of art without adversely affecting the perception of individual colors
Fashion+ has the entire color spectrum brilliantly orchestrated without distorting the color temperature

Configuration
Consult factory for patterns or custom designs
Provide configuration drawings



*Shop drawings provided upon receiving purchase order

Warranty

ZANEEN provides a limited warranty from date of purchase to original purchaser

LED Inserts: 5 year tested for 50,000 hours at 70% lumen output (L70)
LED Driver: 5 year
Non-Electrical Components: 1 year

*Check boxes to complete specification order and submit to quotes@zaneen.com to receive a formal BOM and a finalized model number

*In a constant effort to supply the best product, we reserve the right to change specifications or materials without notice. The most recent specification sheets are found at zaneen.com

2LOOK4 50 TRACK TRIMLESS SYSTEM

SPECIFICATION SHEET

PROJECT _____

TYPE _____

NOTES _____

QUANTITY _____

DATE _____

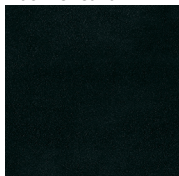
FINISH COLORS



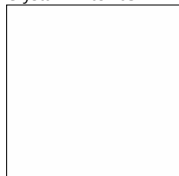
Sparkling Silver - 01



Black Velvet - 02



Crystal White - 03



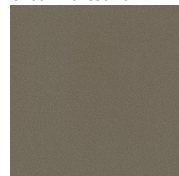
Creamy - 04



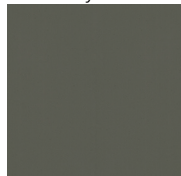
Hampton Bay - 05



Urban Forest - 07



In the Army - 08



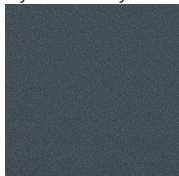
Rusty Angel - 09



Fade to Grey - 12



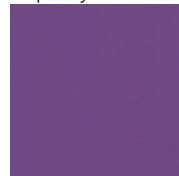
Mysterious Grey - 13



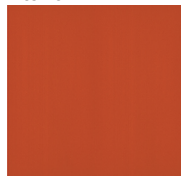
Lost Dream - 15



Purple Sky - 16



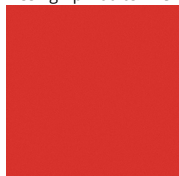
Fresh Oh - 17



Funky P - 18



Kissing Aphrodite - 19



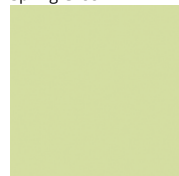
Poseidon's Paradise - 20



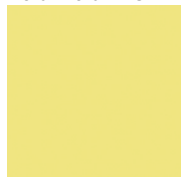
Blue Sky - 21



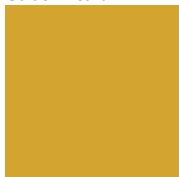
Spring Green - 22



Mellow Yellow - 23



Golden Heart - 24



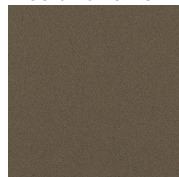
Champagne Cream - 26



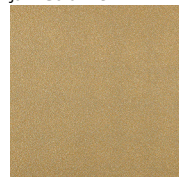
Copper Mine - 27



Ancient Bronze - 28



Jazz Gold - 29



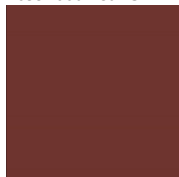
Olive Breeze - 30



Moonlight Silver - 31



Rosewood Red - 32



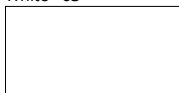
ADAPTER FINISH



Black - 02



White - 03



Digital: Not all screens are calibrated the same, and therefore, colors will appear differently between screens.

Physical: When texture is involved, there will be variations in color, character and tone within a product series and between product families.

Champagne Cream, Copper Mine, Ancient Bronze + Jazz Gold: These finishes have slight fading from specific powder coating production. Each luminaire will slightly vary.

RAL Color Upon Request



2LOOK4 50 TRACK TRIMLESS SYSTEM

SPECIFICATION SHEET

PROJECT _____

TYPE _____

NOTES _____

QUANTITY _____

DATE _____

LEGEND

| | | | | | |
|--|---|--|--|--|--|
| | floor-mounted | | pivotal | | special LED (upon request) RGB, RGBW, tunable, gold+, meat+, art+, fashion+ |
| | wall and ceiling: recessed and surface mounted | | rotating | | warm dim / natural dimming LED |
| | ceiling-mounted and wall-mounted | | illuminate tilted | | rechargeable battery powered |
| | wall-mounted | | color of suspension cable | | fixture with natural vivid LED (upon request) |
| | omni-directional light distribution | | length of suspension cable | | color rendering index |
| | direct light distribution | | reflector degree selection | | color temperature |
| | direct/indirect light distribution | | super spot | | lumen (luminous flux) |
| | indirect light distribution | | lens | | efficacy (lumens per watt) |
| | asymmetric light distribution | | lens pack | | Unified Glare Rating (UGR) range from 5-40 |
| | aura light distribution | | shine ring | | marine grade (AISI 316 stainless steel) |
| | round wall or ceiling cut-out | | integrated shine ring with diffuser | | walk on |
| | square wall or ceiling cut-out | | free individual colors 01-29 | | drive on |
| | the supplied jig specifies the cutout dimensions | | individual colors: 00 (free of charge), 01-25 (extra charge) | | Dark Sky Compliance |
| | minimum distance (meters) lamp - object | | luminaire part to be colored (F1) | | Americans with Disabilities Act (less than 4" off the wall located between 27"-84" from floor) |
| | recessed depth | | luminaire part to be colored (F2) | | lamp protected against explosion |
| | ceiling thickness in mm | | luminaire part to be colored (F3) | | blown glass using traditional methods by master glass blower |
| | ceiling thickness selection | | luminaire part to be colored (F4) | | acoustic material |
| | dimmable DP (phase), DV (0-10V), DD (dali), DS (step-dim) | | luminaire part to be colored (F5) | | protection class I, protection insulation |
| | included or excluded LED driver/transformer/control gear | | color of 3-circuit adaptor | | protection class II, protection insulation |
| | separately switchable | | indirect diffuser | | ETL Certified to UL and CSA Standards |
| | sensor | | direct diffuser | | UL Certified to UL and CSA Standards |
| | remote control | | ball-proof (upon request) | | CSA Certified to UL and CSA Standards |
| | available upon request | | accessory | | Certified for North American Standards |

IP RATING

| | |
|--|--|
| | protected against ingress of solid bodies greater than 12.5mm (finger) |
| | protected against ingress of solid bodies greater than 2.5mm protected against sprays of water up to 60 degrees from the vertical (rain) |
| | protected against ingress of solid bodies greater than 1mm (wire) no protection against the ingress of moisture |
| | protected against ingress of solid bodies greater than 1mm (wire) protected against sprays of water up to 60 degrees from the vertical (rain) |
| | protected against ingress of solid bodies greater than 1mm (wire) protected against water splashed from all directions |
| | protected against limited ingress of dust (wet rooms/covered outdoor areas) protected against water splashed from all directions |
| | protected against ingress of dust protected against jets of water |
| | protected against ingress of dust protected against powerful jets of water or heavy seas |
| | protected against ingress of dust protected against immersion of water between 15cm - 1m for 30 minutes |
| | protected against ingress of dust protected against immersion of water under pressure for long periods |

IK RATING

| | |
|--|---|
| | protected against 0.14 joules impact (equivalent to 0.25kg mass dropped from 56mm above the surface) |
| | protected against 0.2 joules impact (equivalent to 0.25kg mass dropped from 80mm above the surface) |
| | protected against 0.35 joules impact (equivalent to 0.25kg mass dropped from 140mm above the surface) |
| | protected against 0.5 joules impact (equivalent to 0.25kg mass dropped from 200mm above the surface) |
| | protected against 0.7 joules impact (equivalent to 0.25kg mass dropped from 280mm above the surface) |
| | protected against 1 joules impact (equivalent to 0.25kg mass dropped from 400mm above the surface) |
| | protected against 2 joules impact (equivalent to 0.5kg mass dropped from 400mm above the surface) |
| | protected against 5 joules impact (equivalent to 1.7kg mass dropped from 300mm above the surface) |
| | protected against 10 joules impact (equivalent to 5.0kg mass dropped from 200mm above the surface) |
| | protected against 20 joules impact (equivalent to 5.0kg mass dropped from 400mm above the surface) |

WIRING DIAGRAMS

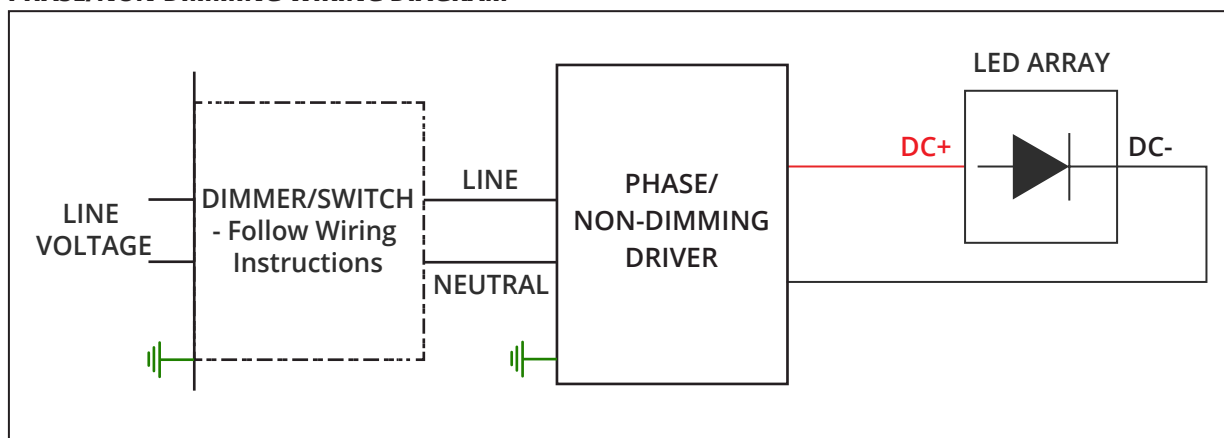
ALL ZANEEN FIXTURES ARE MANUFACTURED TO NORTH AMERICAN ELECTRICAL STANDARDS

Post Sales Support
HQ 1-800-388-3382 X 625 support@zaneen.com

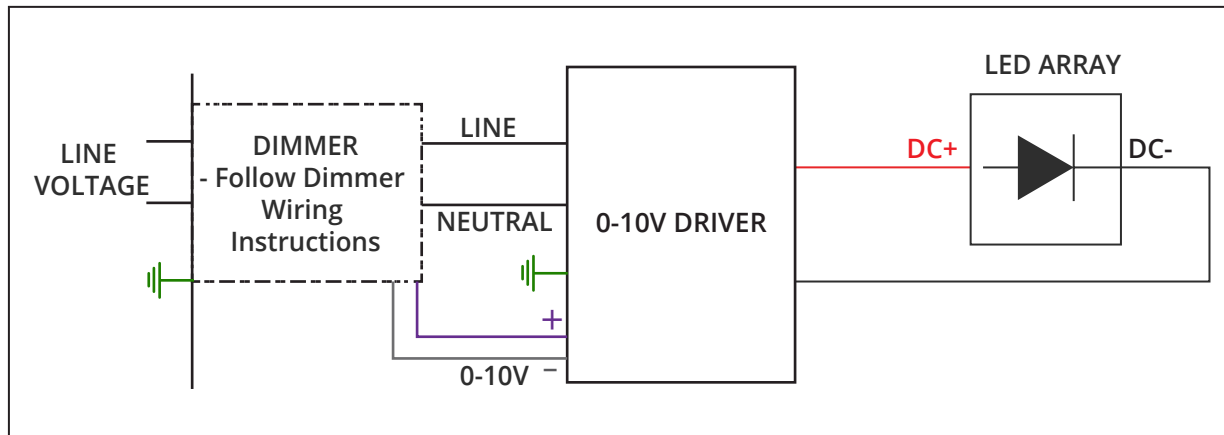
IMPORTANT

- Do NOT connect directly to line voltage
- There is a minimum and maximum load per driver (See fixture and driver specifications).
- Fixture MUST be connected to LED driver, prior to turning power on

PHASE/NON-DIMMING WIRING DIAGRAM



0-10V DIMMING WIRING DIAGRAM



2LOOK4 50 TRACK TRIMLESS SYSTEM
SPECIFICATION SHEET

PROJECT

TYPE

NOTES

QUANTITY

DATE

Insert custom drawing here or attach with additional pages

