

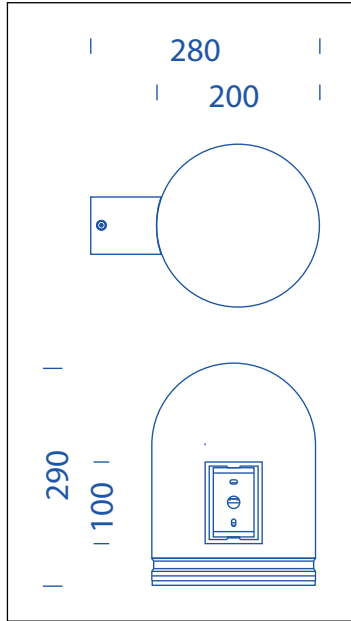
IP65



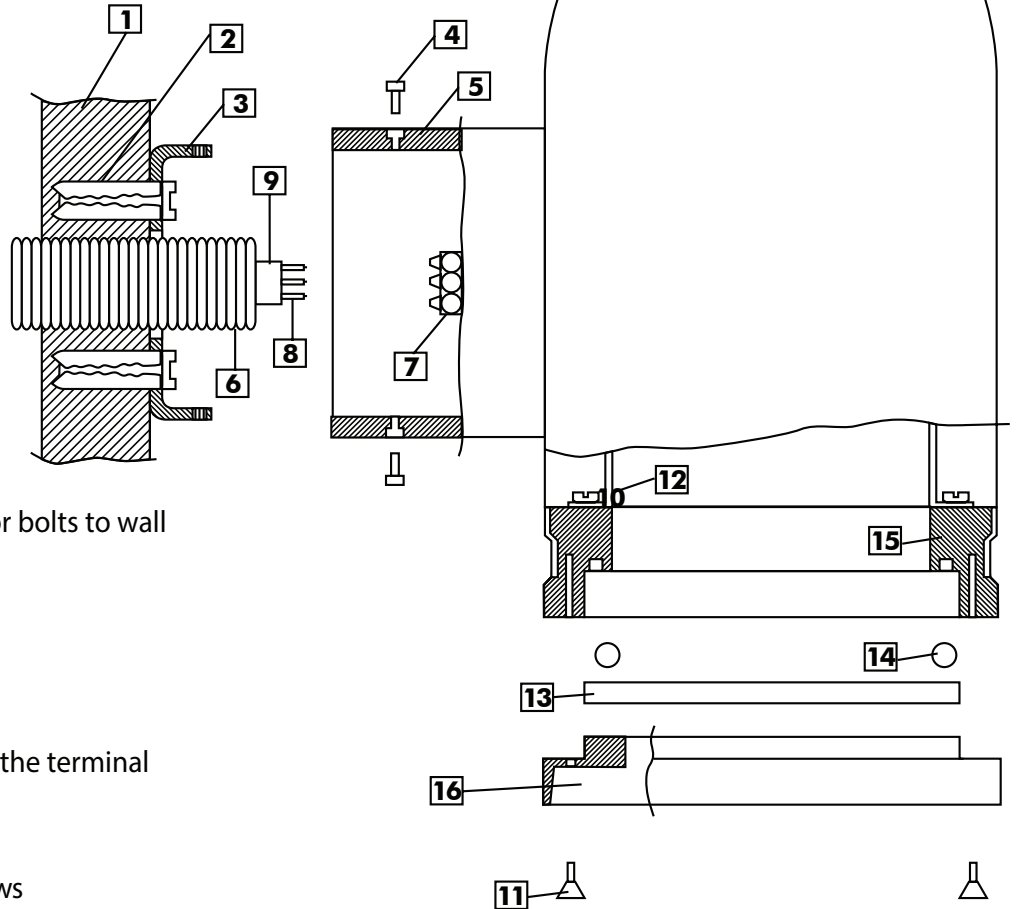
120V - 50 / 60Hz

IK 10

IP65



OPTION - 1



- 1 Fixing wall
- 2 Bracket fixing screws and anchor bolts to wall
- 3 Wall bracket
- 4 Fixture fixing screws to bracket
- 5 Fixture support
- 6 Power supply tube
- 7 Fixture terminal block
- 8 Power supply for connection to the terminal
- 9 Power supply cable
- 10 Lighting fixture
- 11 Fixture locking diffuser fixing screws
- 12 Gear box brackets
- 13 Glass
- 14 Gasket
- 15 Internal ring
- 16 Diffuser

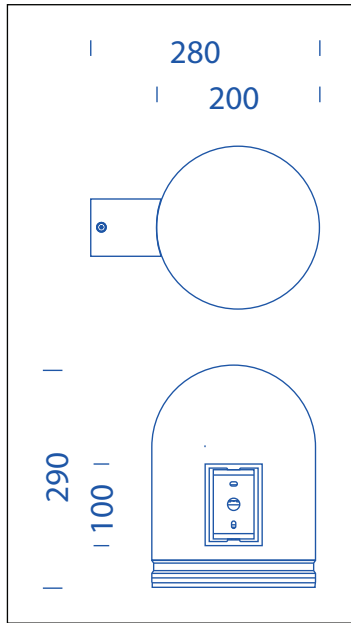
FITTING INSTRUCTIONS

Fit the bracket [3] to the wall [1] using the screws and anchor bolts [2], slide the power supply cable [9] out of the tube [6], arrange the wires [8] and connect them to the terminal block [7]. Slide the support [5] into the bracket [3] and lock the fixture [10] with the screws [4]. Open the fixture by unscrewing the screws [11], remove the diffuser [16] and the glass [13] with the gasket [14]. Fit the lamp making certain that its characteristics are those described in the label and try switching on. When everything is in place, close the fixture positioning the gasket [14], the glass [13] and the diffuser [16] well. Lock everything by fitting the screws [11], always acting alternately on opposite screws.

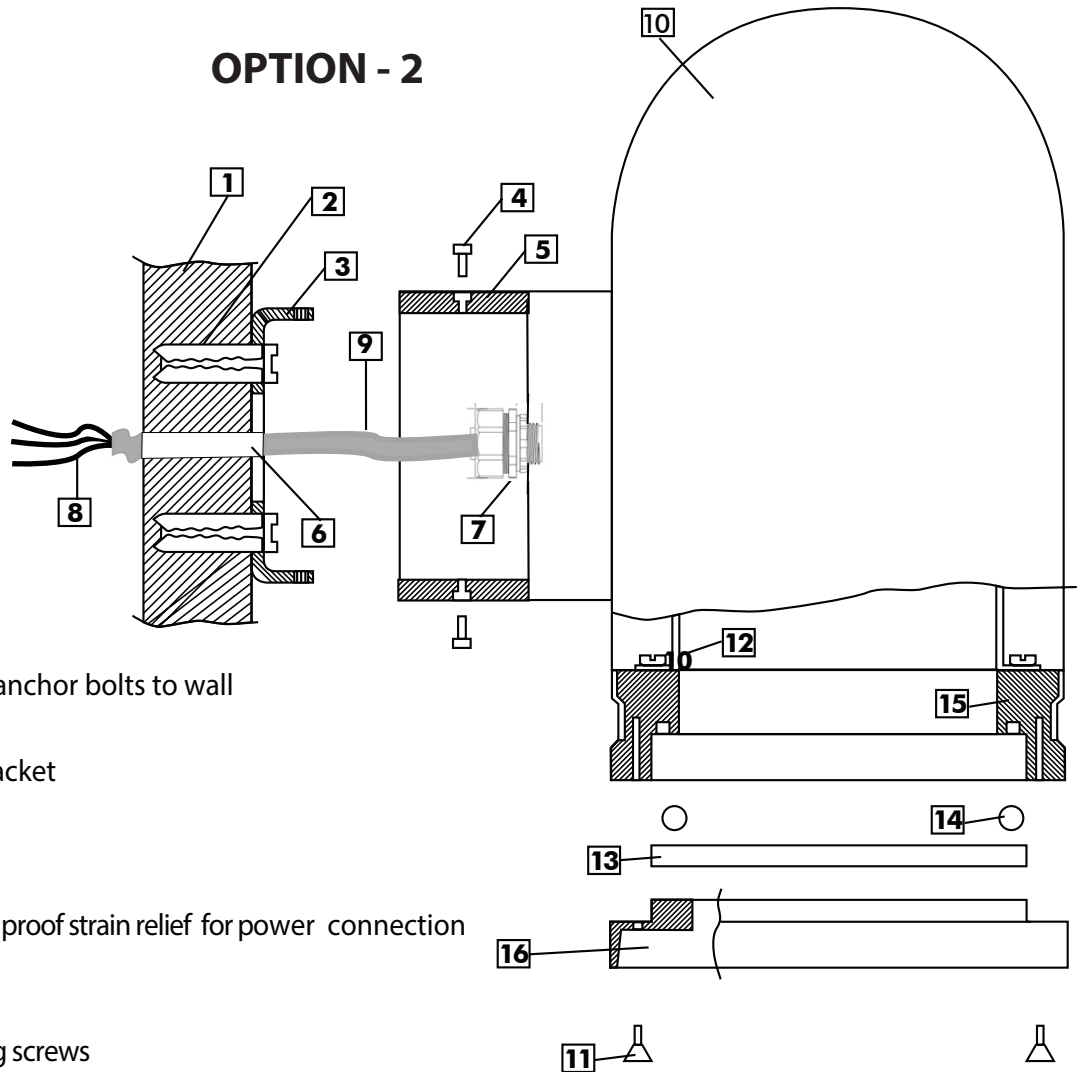
120V - 50 / 60Hz

IK 10

IP65



OPTION - 2



- 1 Fixing wall
- 2 Bracket fixing screws and anchor bolts to wall
- 3 Wall bracket
- 4 Fixture fixing screws to bracket
- 5 Fixture support
- 6 Power supply tube
- 7 Weatherproof strain relief
- 8 To be connected to weather proof strain relief for power connection
- 9 Power supply cable
- 10 Lighting fixture
- 11 Fixture locking diffuser fixing screws
- 12 Gear box brackets
- 13 Glass
- 14 Gasket
- 15 Internal ring
- 16 Diffuser

FITTING INSTRUCTIONS

Fit the bracket [3] to the wall [1] using the screws and anchor bolts [2], slide the power supply cable [9] out of the tube [6], arrange the wires [8] and connect them to the power supply. Slide the support [5] into the bracket [3] and lock the fixture [10] with the screws [4]. Open the fixture by unscrewing the screws [11], remove the diffuser [16] and the glass [13] with the gasket [14]. Fit the lamp making certain that its characteristics are those described in the label and try switching on. When everything is in place, close the fixture positioning the gasket [14], the glass [13] and the diffuser [16] well. Lock everything by fitting the screws [11], always acting alternately on opposite screws.

GENERAL NOTES

This instruction sheet must be used for installing the fixture and must be handed over for safekeeping to the ordinary maintenance engineer for lamp replacement, glass cleaning or directing the oscillating parts (where foreseen).

1. Blown lamps should be replaced regularly. Make certain not to use lamps with a power rating higher than that prescribed on the label.
2. Immediately replace glasses and gaskets whenever damaged. It is good practice to regularly check the condition of the fixtures.
3. This fixture cannot be used for purposes not foreseen by this sheet or in the general catalogue.
4. The prescribed power ratings, specific to the fixture cannot be exceeded.
5. Only specialised personnel may install and maintain this fixture, fully respecting the constructor's specifications and the regulatory system prescriptions in force.
6. To guarantee the seal, position the glass and gaskets exactly, and tighten the screws that must be perfectly clean before disassembling. Efficient spanners of the right size must be used for disassembling to avoid ruining the spanner seats.
7. **Before closing the fixture lubricate the screws and their seats with PTFE lubricant.**
8. **Tighten the fixing screws with a 3 Nm torque.**
9. Before completing and activating the electrical system, check the class each fixture belongs to.
10. Fixtures opened for maintenance and installation must be protected from water.
11. Before fitting and connecting to the power supply, check the voltage indicated on the label.
12. Respect the distances described on the product label.
13. Avoid staying on ground recess products to prevent them from overheating.
14. Any junctions in the system, performed in separate boxes, must be watertight to avoid liquids from being drawn inside the fixture.
15. Avoid an excessive accumulation of cables between the fixture and its housing.
16. During operation, the glasses and the shields can reach high temperatures: avoid the accidental contact of persons, animals and objects. Special fixtures are available with double glasses for temperatures safe to touch.
17. Class II fixtures must be installed so that the exposed metallic parts are not in electrical contact with installed parts connected to a protection conductor.

Post Sales Support

HQ 1-800-388-3382 support@zaneen.com



EN

- Installation and electrification must be carried out by a qualified electrician, only.
- Observe all relevant building codes and regulations.
- Prior to installation or repair: disconnect power; it is the installer's responsibility to ensure for all electrical, mechanical and thermal compatibility.
- The LED light source contained in this fixture shall only be replaced by Zaneen, or a person approved by Zaneen.
- Recommendations: Keep the instruction sheet(s) in the event of maintenance and/or disassembly.

Access detailed spec sheets from www.zaneen.com

FR

- L'installation et l'électrification doivent être effectuées uniquement par un électricien qualifié.
- Respectez tous les codes du bâtiment et réglementations en vigueur.
- Avant l'installation ou la réparation: débranchez l'alimentation électrique; Il incombe à l'installateur d'assurer de la compatibilité électrique, mécanique et thermique.
- La source de lumière LED contenue dans ce luminaire ne doit être remplacée que par Zaneen, ou une personne approuvée par Zaneen.
- Recommandations: Conservez la (les) fiche (s) d'instructions en cas de maintenance et / ou de démontage

Accéder aux fiches techniques détaillées sur www.zaneen.com

Zaneen's lighting fixtures, when properly installed on correct line voltage, and under normal conditions of use, are warrantied as follows:

- All products, excluding lamps, are warrantied to be free from defect in materials and workmanship for a period of 12 months (1 year) from the date of invoice.
- Transformers and Ballast Warranty: 3 Years Limited Warranty from the invoice date.
- LED engines and power supplies: 5 Years Limited Warranty from the invoice date.

Warranty claims regarding the product(s) must be:
Submitted in writing within 30 days of discovery of the defect.

Zaneen uses only electrical components, which are produced by responsible manufacturers. Components that may fail in service within the warranty period, under normal use, will be replaced at no charge.

Zaneen will not assume labour or transportation charges in connection with replacement of such parts, nor for removal or re-installation of equipment or parts, nor for consequential damages or losses.

The warranty extended to Zaneen by the manufacturers of the electrical components is passed on to our customers.

At its option, Zaneen will repair or replace, any fixture defective as provided herein if such fixture is returned by the purchaser within the warranty period, provided Zaneen has issued a written "Return Goods Authorization". Such repair or replacement is the exclusive remedy against Zaneen and Zaneen is not responsible for damage of any sort whatsoever, including incidental and consequential damages or losses. This warranty extends only to replacement defective fixtures or components and no allowance will be made for labour or transportation charges in connection with replacement of such parts, nor for removal or re-installation of equipment or parts unless specifically authorized in writing by Zaneen prior to any work being performed.

Due to advances in LED technology and change to luminous flux of LED due to usage, replacement LED have different output properties from the original LED supplied with the product

This warranty only applies when the products are installed in applications in which ambient temperatures are within normal temperatures and are operated within the electrical values shown on the LED driver label.

Zaneen will not be responsible under warranty for any failure of the product that results directly or indirectly from improper installation and/or external causes such as: acts of nature, physical damage, and exposure to adverse or hazardous chemicals or other substances, use of harsh cleaning agent or harsh chemicals.

Warranty for any substantial deterioration in the product finish caused by failure to clean, inspect or maintain the finish of the product. The end user is responsible for the structural integrity of existing foundations, anchorages, or structures and all consequences arising from their use.