

FIREFLY IN THE SKY TABLE / FLOOR
INSTALLATION GUIDE

ZANEEN



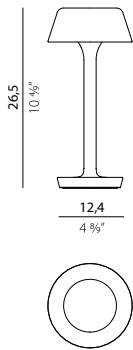


Fig. A

Lz

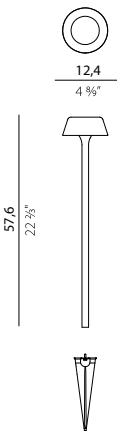
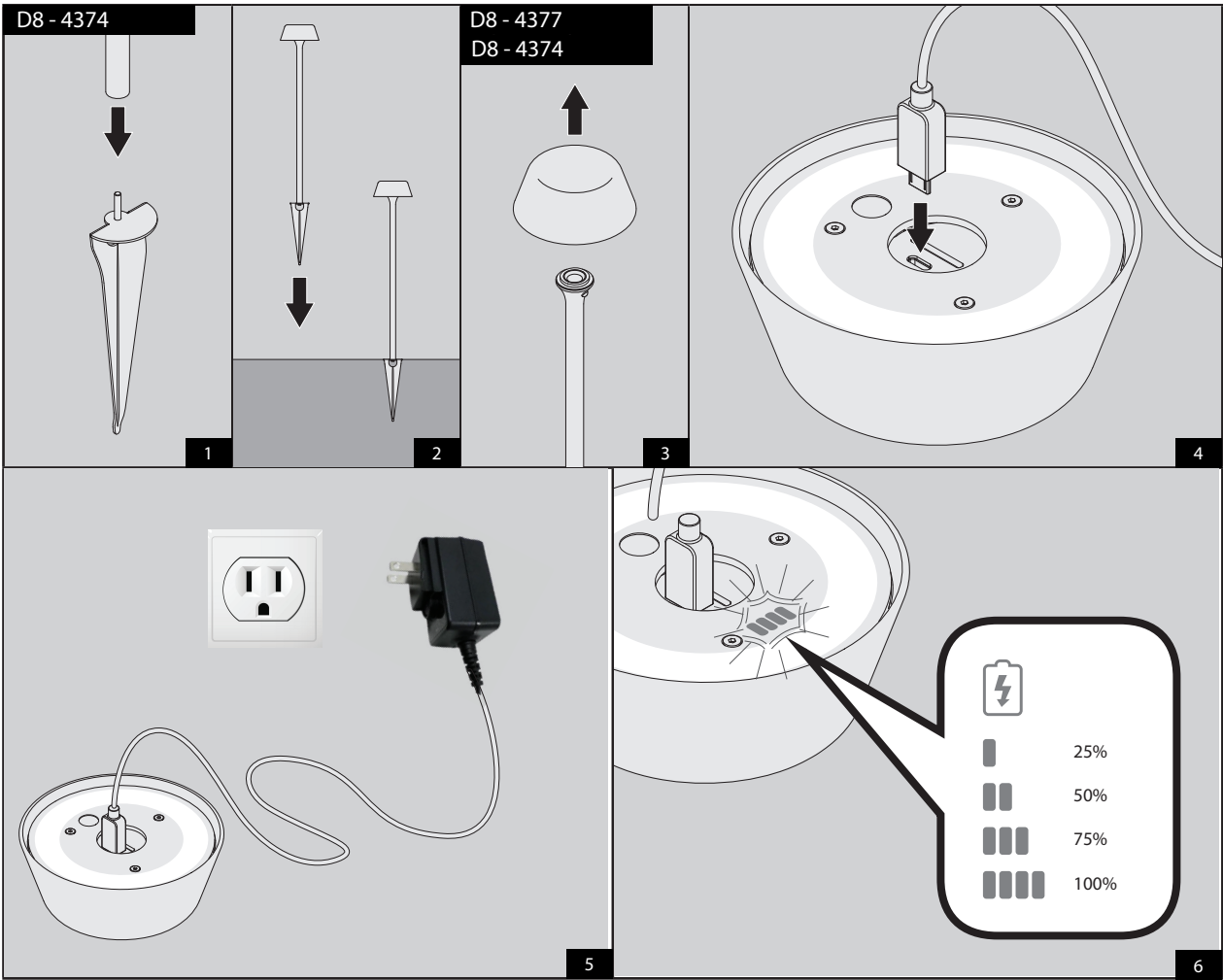


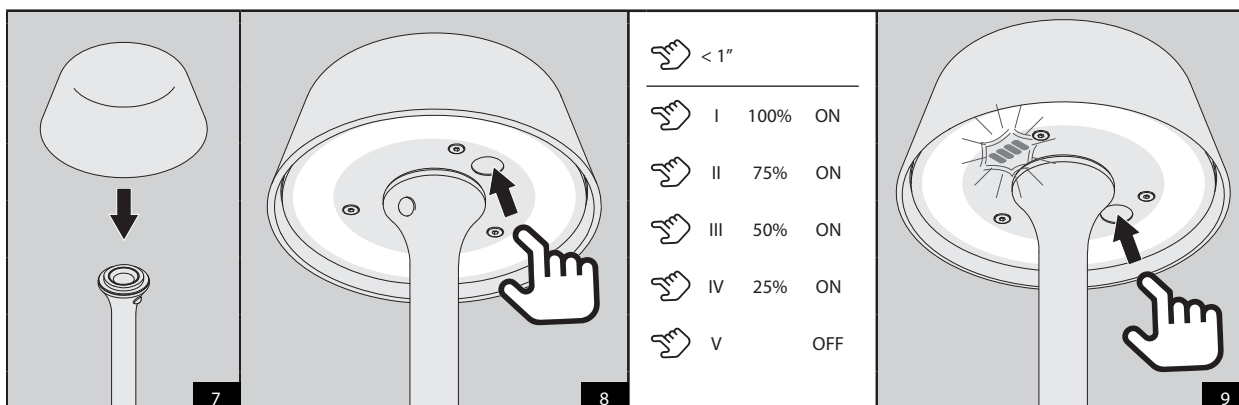
Fig. B

CODE	LAMP	WIRING VERSION	IMAGE
D8 - 4377	LED	STEP DIM	A
D8 - 4374	LED	STEP DIM	B





IP 65



WARNINGS:

The luminaire has a rechargeable 3,7V-4000mAh Li-Po battery, which cannot be replaced by the final consumer: the battery must be replaced by the manufacturer to avoid any danger. The product must not be exposed to heat sources or direct sunlight to prevent overheating of the battery.

Recharge the battery before using it the first time.

Use only the battery charger supplied with the product. If the power cable, the battery charger or the plug are damaged, do not use them but proceed to the replacement contacting the manufacturer, its service center or qualified personal to avoid risks.

To reach full charge, recharge the battery for about 4 hours. The operating autonomy of the totally recharged fitting is up to 7 hours at full light emission. When battery reach the 5% of left charge, the battery level indicator starts to flash. Insert the micro-USB jack in the fitting connector (fig. 4) and connect the plug to mains (fig. 5). During the recharge, the battery level indicator signals the progress of recharging (fig. 6). If the luminaire remains connected to the power source for more than the required charging time, the service life of the battery will not be affected.

Disconnect the device head from mains and mount it on the stem (fig. 7). Turn on the luminaire and dim light intensity by pushing the button (fig. 8); with every finger pressure the battery level indicator signals the charge status (fig. 9).

Recharge the battery every 4 months if it is used infrequently.

The storage of the product must be done in environments with a temperature range of -20°C ÷ +45°C.

The rechargeable battery contains pollutants such as mercury (Hg), cadmium (Cd) and lead (Pb). Failure to correctly dispose of this waste in the appropriate containers for separate collection will cause serious harm to the environment and human health.

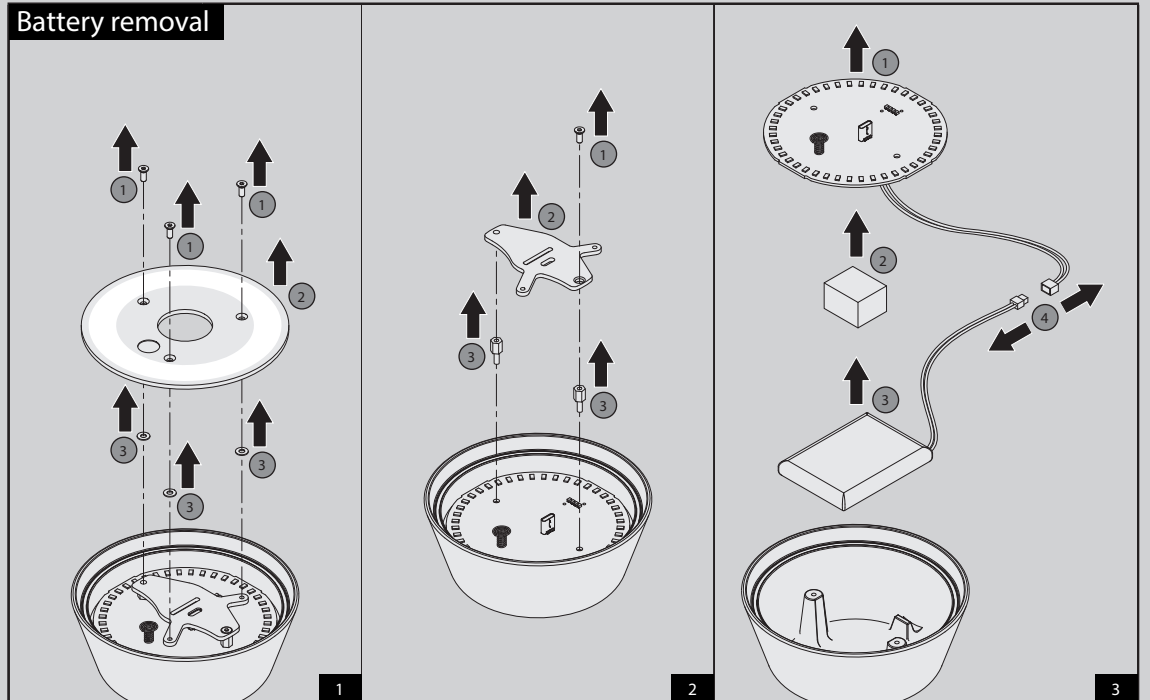




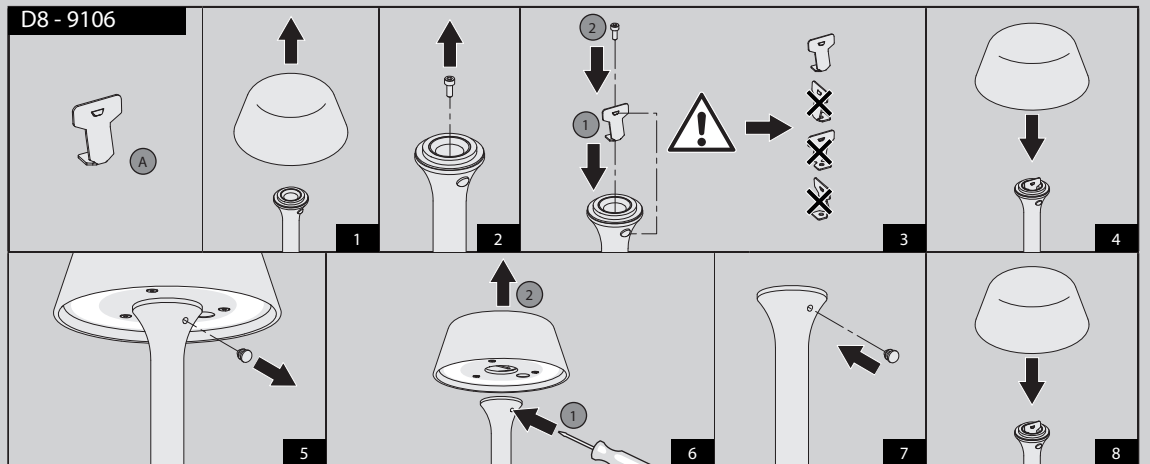
IP 65



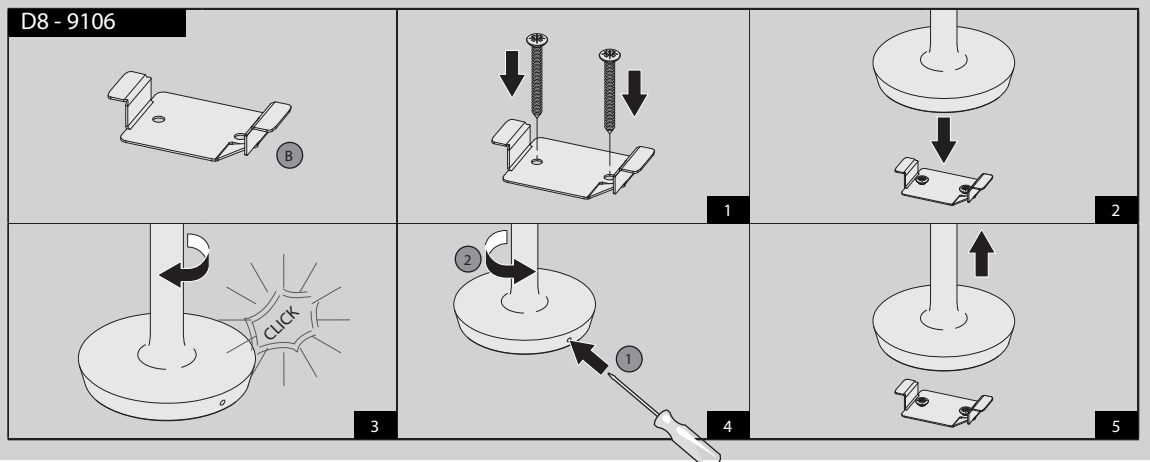
Battery removal



D8 - 9106



D8 - 9106



Post Sales Support

HQ 1-800-388-3382 support@zaneen.com



EN

- Installation and electrification must be carried out by a qualified electrician, only.
- Observe all relevant building codes and regulations.
- Prior to installation or repair: disconnect power; it is the installer's responsibility to ensure for all electrical, mechanical and thermal compatibility.
- The LED light source contained in this fixture shall only be replaced by Zaneen, or a person approved by Zaneen.
- Recommendations: Keep the instruction sheet(s) in the event of maintenance and/or disassembly.

Access detailed spec sheets from www.zaneen.com

FR

- L'installation et l'électrification doivent être effectuées uniquement par un électricien qualifié.
- Respectez tous les codes du bâtiment et réglementations en vigueur.
- Avant l'installation ou la réparation: débranchez l'alimentation électrique; Il incombe à l'installateur des'assurer de la compatibilité électrique, mécanique et thermique.
- La source de lumière LED contenue dans ce luminaire ne doit être remplacée que par Zaneen, ou une personne approuvée par Zaneen.
- Recommandations: Conservez la (les) fiche (s) d'instructions en cas de maintenance et / ou de démontage

Accéder aux fiches techniques détaillées sur www.zaneen.com

Zaneen's lighting fixtures, when properly installed on correct line voltage, and under normal conditions of use, are warrantied as follows:

- All products, excluding lamps, are warrantied to be free from defect in materials and workmanship for a period of 12 months (1 year) from the date of invoice.
- Transformers and Ballast Warranty: 3 Years Limited Warranty from the invoice date.
- LED engines and power supplies: 5 Years Limited Warranty from the invoice date.

Warranty claims regarding the product(s) must be:
Submitted in writing within 30 days of discovery of the defect.

Zaneen uses only electrical components, which are produced by responsible manufacturers. Components that may fail in service within the warranty period, under normal use, will be replaced at no charge.

Zaneen will not assume labour or transportation charges in connection with replacement of such parts, nor for removal or re-installation of equipment or parts, nor for consequential damages or losses.

The warranty extended to Zaneen by the manufacturers of the electrical components is passed on to our customers.

At its option, Zaneen will repair or replace, any fixture defective as provided herein if such fixture is returned by the purchaser within the warranty period, provided Zaneen has issued a written "Return Goods Authorization". Such repair or replacement is the exclusive remedy against Zaneen and Zaneen is not responsible for damage of any sort whatsoever, including incidental and consequential damages or losses. This warranty extends only to replacement defective fixtures or components and no allowance will be made for labour or transportation charges in connection with replacement of such parts, nor for removal or re-installation of equipment or parts unless specifically authorized in writing by Zaneen prior to any work being performed.

Due to advances in LED technology and change to luminous flux of LED due to usage, replacement LED have different output properties from the original LED supplied with the product

This warranty only applies when the products are installed in applications in which ambient temperatures are within normal temperatures and are operated within the electrical values shown on the LED driver label.

Zaneen will not be responsible under warranty for any failure of the product that results directly or indirectly from improper installation and/or external causes such as: acts of nature, physical damage, and exposure to adverse or hazardous chemicals or other substances, use of harsh cleaning agent or harsh chemicals.

Warranty for any substantial deterioration in the product finish caused by failure to clean, inspect or maintain the finish of the product. The end user is responsible for the structural integrity of existing foundations, anchorages, or structures and all consequences arising from their use.