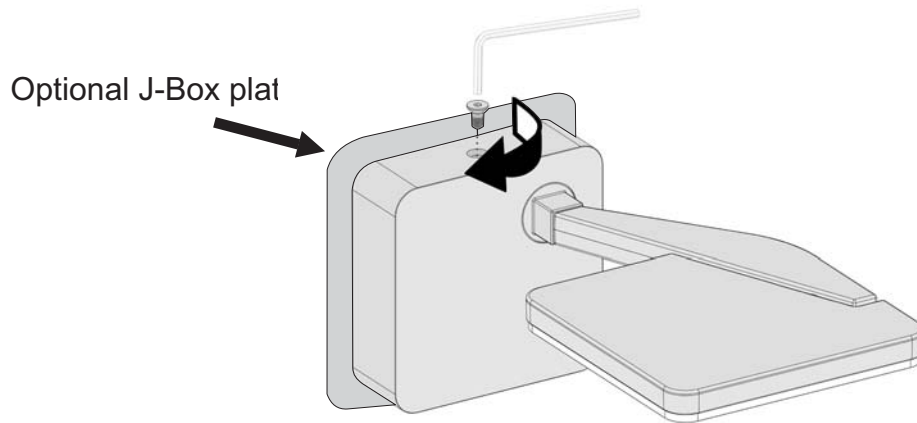


Compatible with:

D8-3410, D8-3411, D8-3412, D8-3413

D8-2292, D8-2293, D8-2294, D8-2295

This fixture comes with an optional J-Box cover that makes it easy to install on North American wall or ceiling J-Box.



OPERATION AND USE INSTRUCTIONS

ATTENTION: PLEASE READ AND SAVE THESE INSTRUCTIONS

The safety of this fitting is only guaranteed if the instructions are followed carefully.

Installation and all non-routine maintenance must be carried out only by qualified personal.

Disconnect main voltage before taking any action on the fitting.

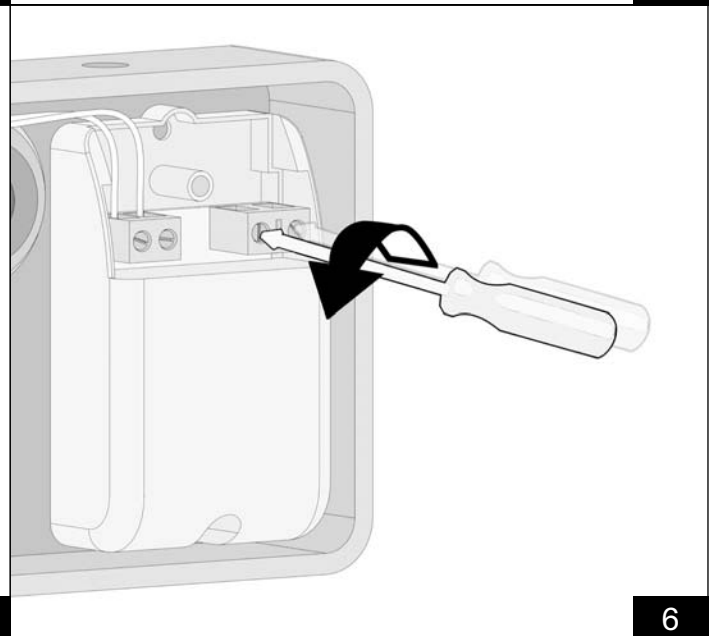
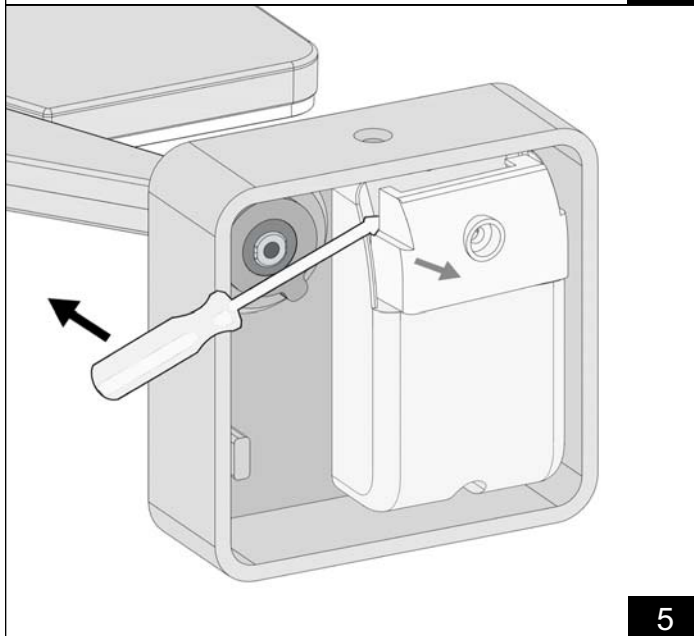
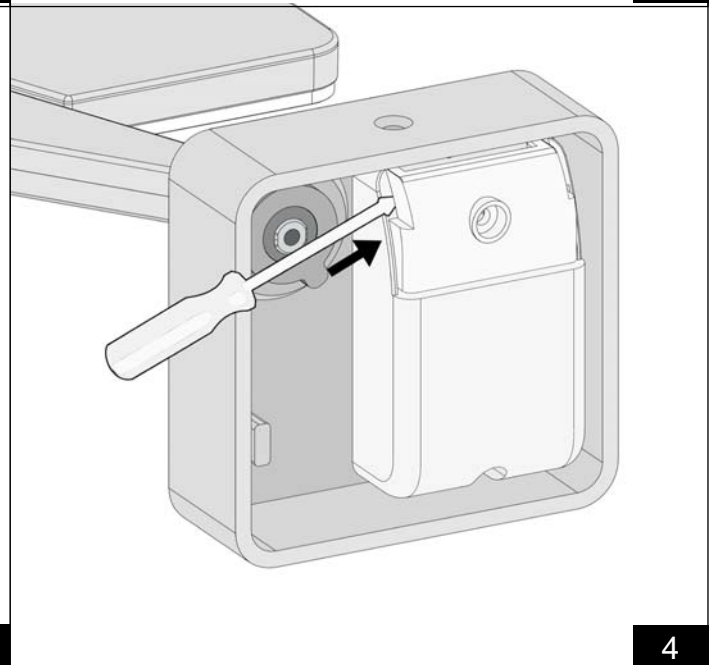
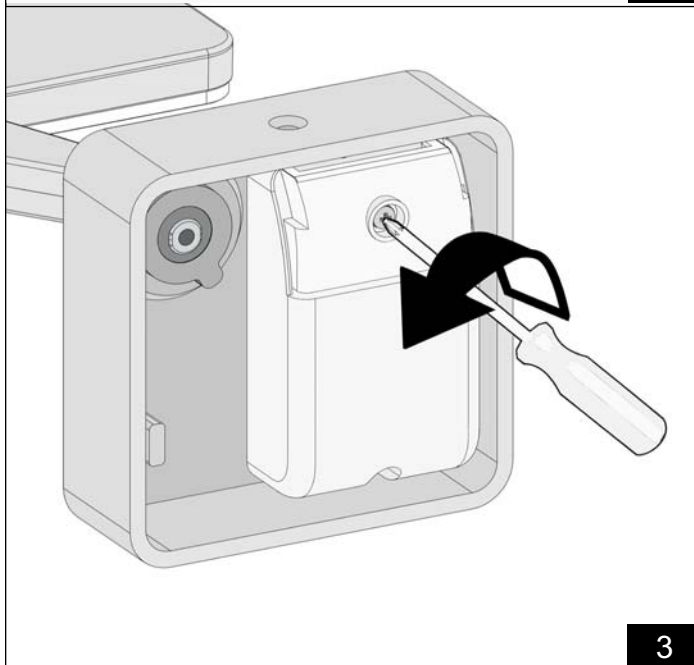
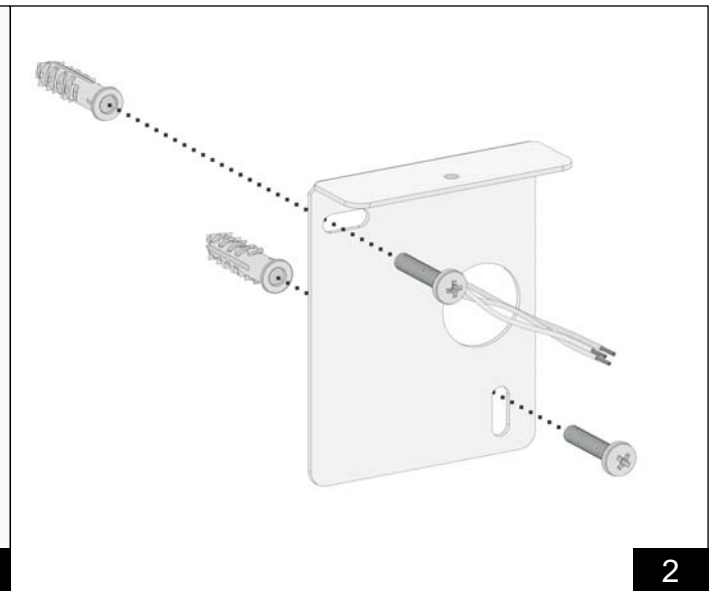
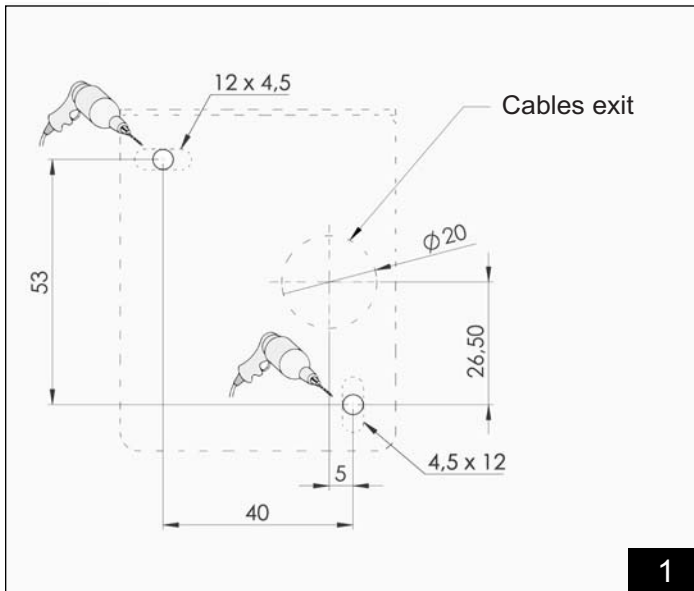
Panzeri Carlo Srl is not responsible for any damage to persons and/or property resulting from improper installation, misuse, or unauthorized modifications made to their products.

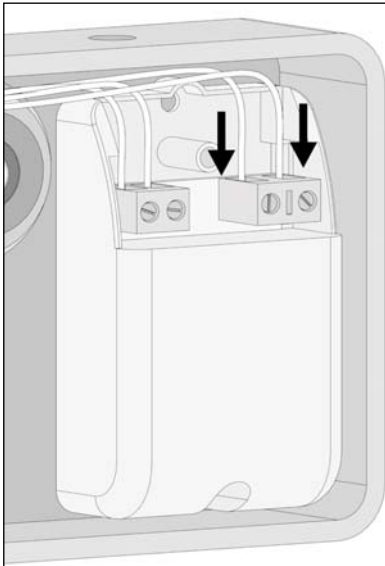
CLEANING

In order to clean the fitting use only a soft cloth. In case of persistent spots use only damp cloth and neutral soap.

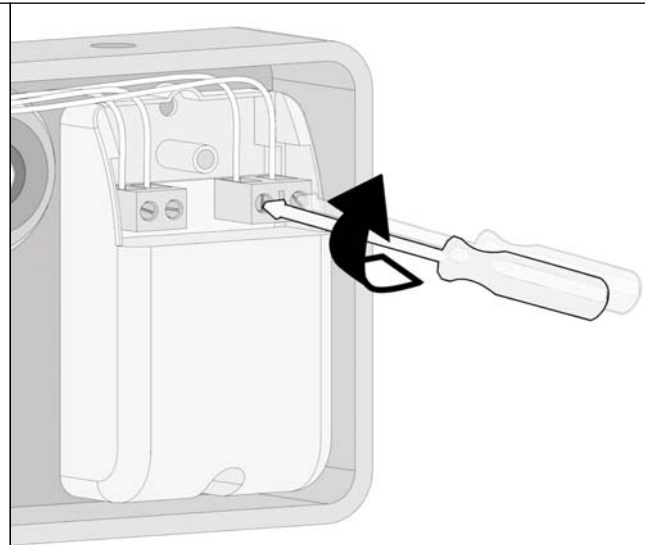
DON'T USE alcohol and/or solvent

Fixtures with led: the led cannot be partially replaced. If damaged all the power supply must be replaced.

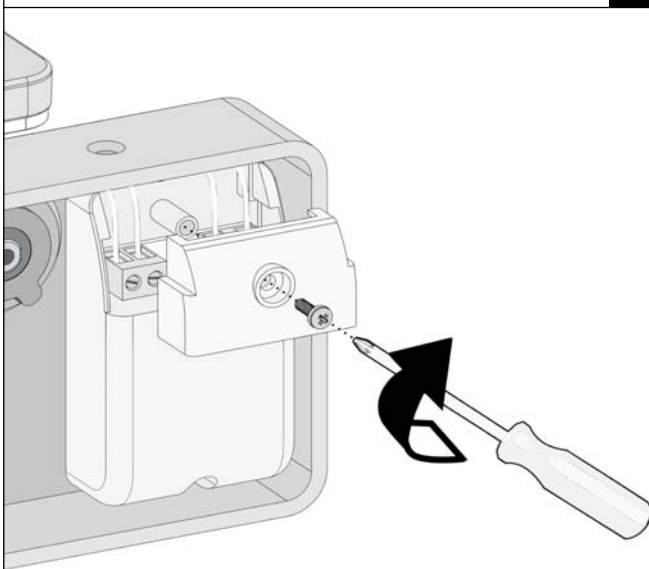




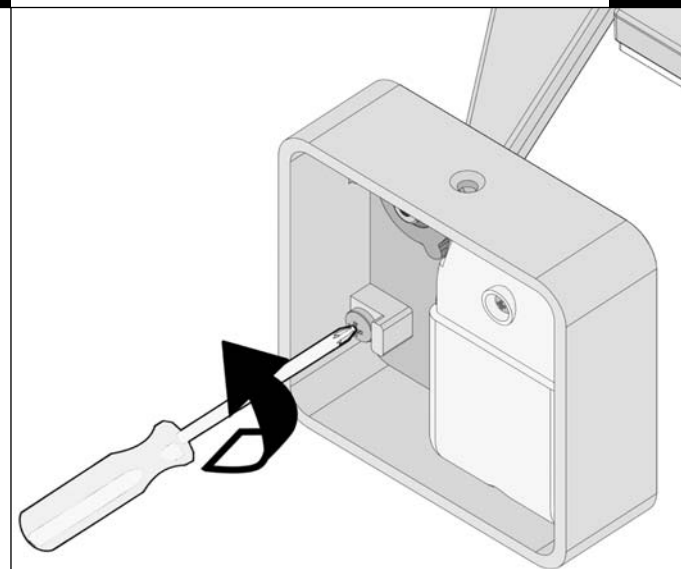
7



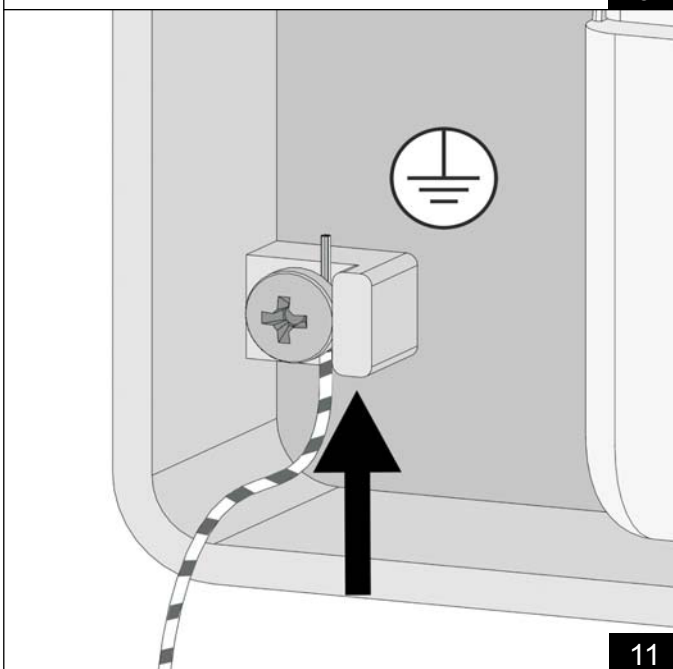
8



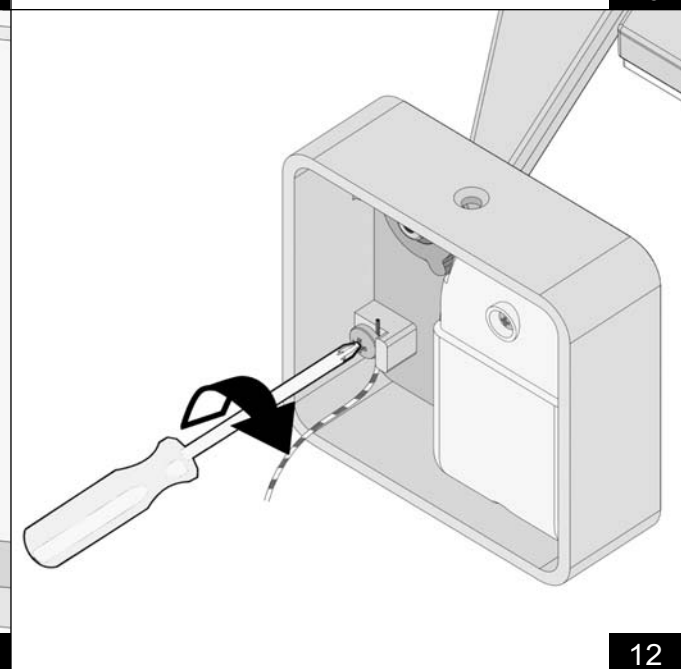
9



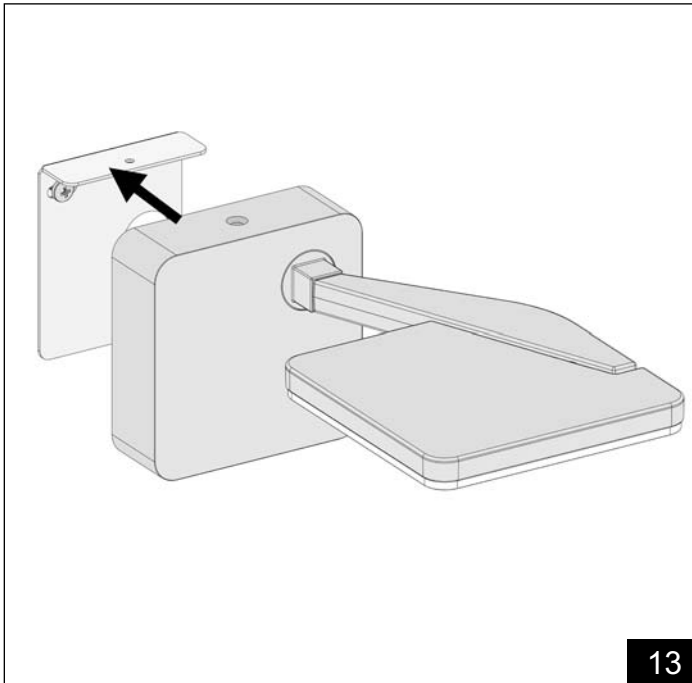
10



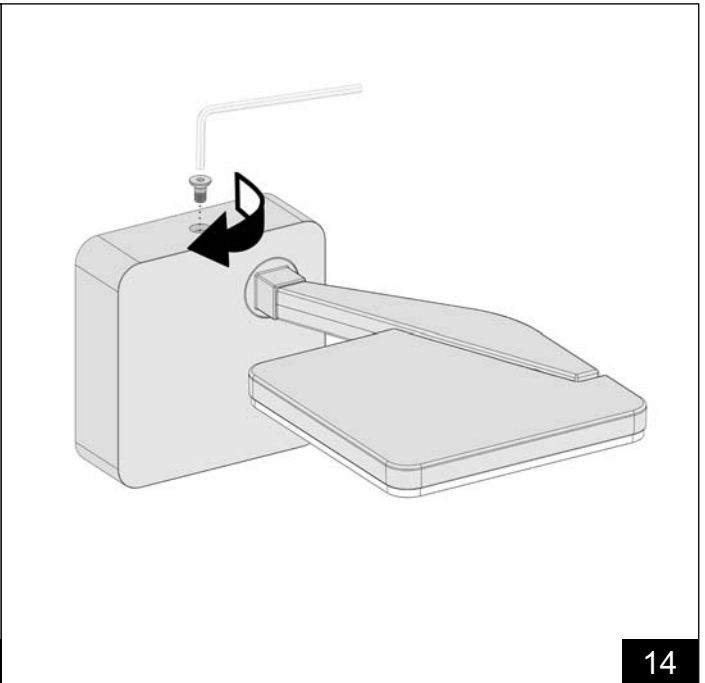
11



12



13



14

A77__



< 1"

I 100 % ON

II 75 % ON

III 50 % ON

IV 25 % ON

V 0 % OFF

> 1"

ON → > 1" → OFF

OFF → > 1" → Ultima Last Letzter Dernier % ON

15

A77__

MEMORY FUNCTION



(1)

In case of a remote ON/OFF switch, if you want to maintain the same level of light you had when you switched off proceed as following:

(1) Press and hold the PUSH button until fxture flashes briefly.

16