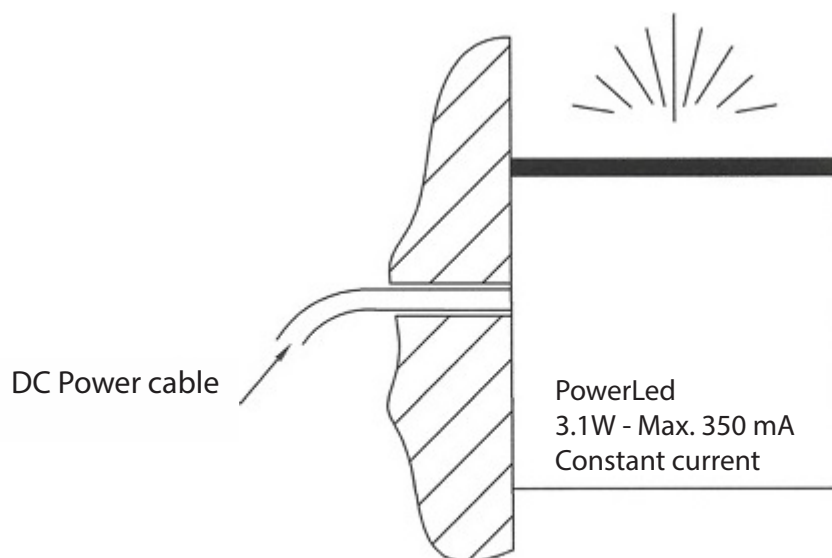
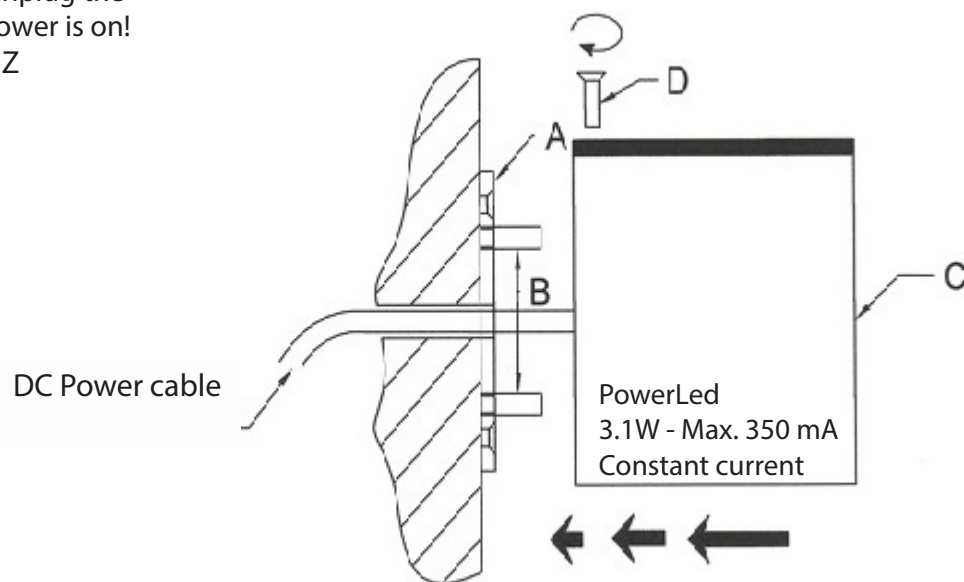
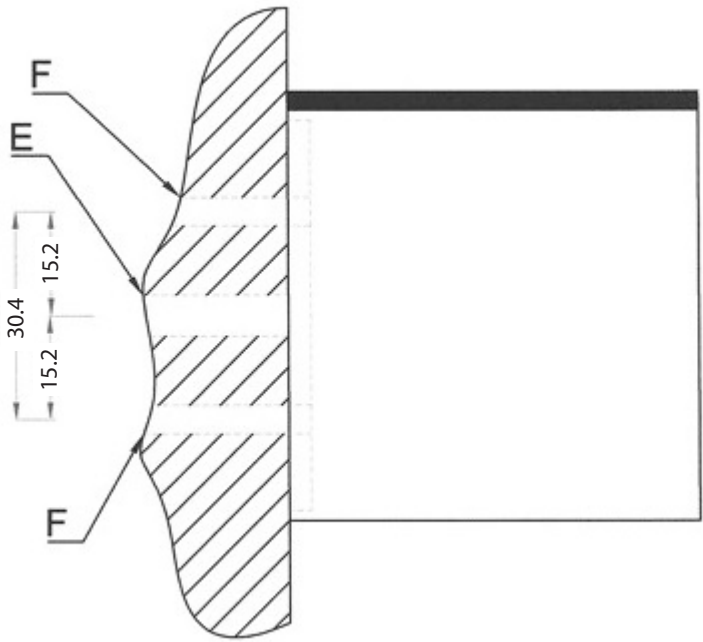


Attention !

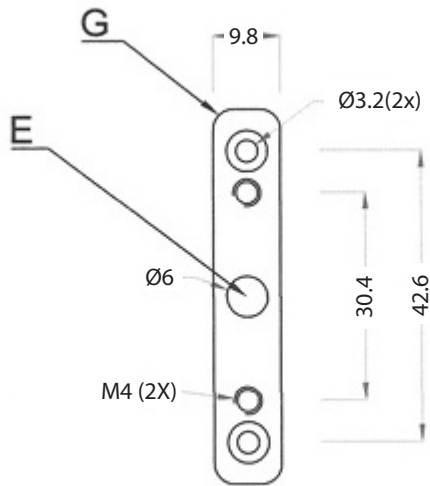
Do not plug in or unplug the
connector when power is on!
120/277V 50/60HZ



All dimensions are in mm



E : Cable entry
F : Wall plug
G: Wall Bracket



INSTALLATION WITH COVER PLATE

- Wall bracket will be fastened to cover plate.
- Cover plate includes crossbar that mounts to Junction Box

LOW VOLTAGE WIRING DIAGRAM SINGLE UNIT

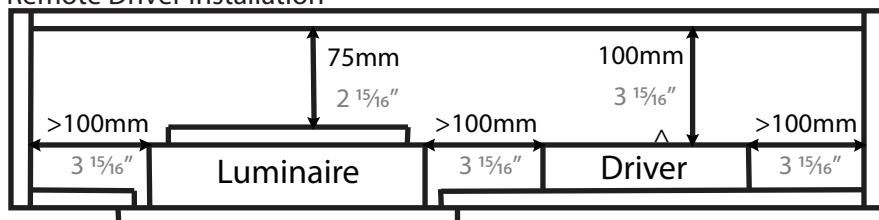
IMPORTANT

ALL ZANEEN FIXTURES ARE MANUFACTURED TO NORTH AMERICAN ELECTRICAL STANDARDS

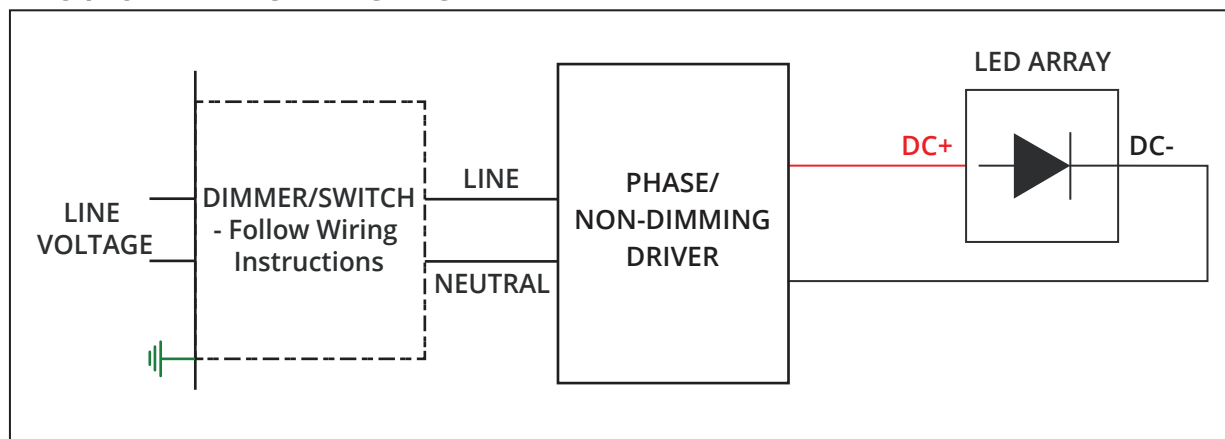
IMPORTANT:

- Fixture requires a remote driver (If supplied by zaneen, typically mounted in an galvanized metal enclosure).
- Do NOT connect directly to line voltage.
- Fixture MUST be connected to LED driver, prior to turning power on.

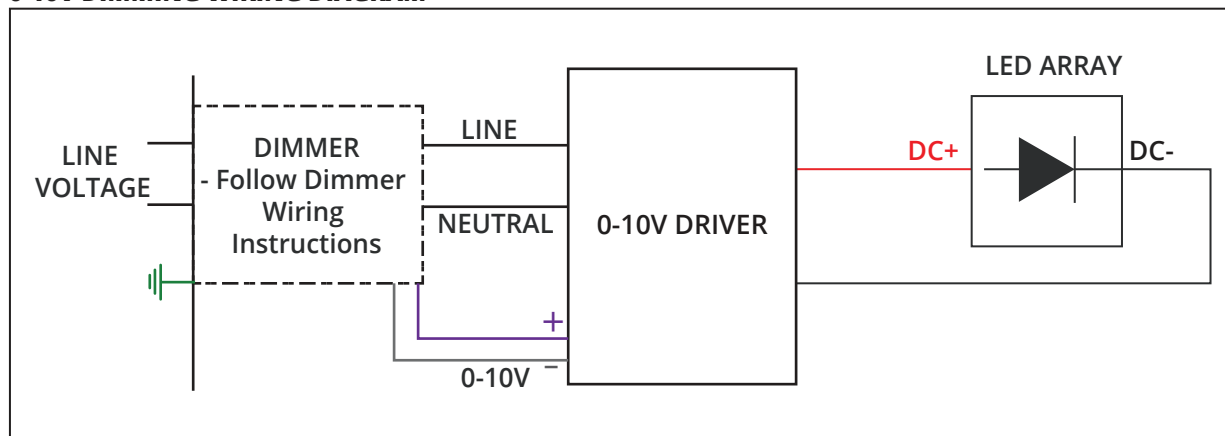
Remote Driver Installation



PHASE/NON-DIMMING WIRING DIAGRAM



0-10V DIMMING WIRING DIAGRAM



Mounting instructions:

- Please read the instructions before you start the installation.
- Keep this manual for future reference.
- The fixture is for indoor use only in normal dry conditions.
- If you have doubts, consult an electrician for the installation.
- Handle the product with caution to prevent damages during installation.
- ATTENTION!!!! STANDARD IT COMES WITHOUT A LED DRIVER!!!!
- Standard is 150 mm cable provided. Red is + and black is -.
- The driver must have the following specifications: Constant current 350mA, minimum 3W, and minimum 8.3V.
- Switch off electricity during installation.
- Install the clamp (A) on the wall with 2 plugs and screws.
- Pull the cables through the hole of the clamp and connect them.
- Put the match (C) on the screws (B).
- Fix the match by fastening the upper screw (D).

Product Information:

- Metal parts can be polished with a soft cloth. Using a polisher to clean this light is at your own risk.

IMPORTANT

Post Sales Support HQ 1-800-388-3382 support@zaneen.com



EN

- Installation and electrification must be carried out by a qualified electrician, only.
- Observe all relevant building codes and regulations.
- Prior to installation or repair: disconnect power; it is the installer's responsibility to ensure for all electrical, mechanical and thermal compatibility.
- The LED light source contained in this fixture shall only be replaced by Zaneen, or a person approved by Zaneen.
- Recommendations: Keep the instruction sheet(s) in the event of maintenance and/or disassembly.

Access detailed specification sheets and the warranty policy on the product page at zaneen.com.

FR

- L'installation et l'électrification doivent être effectuées uniquement par un électricien qualifié.
- Respectez tous les codes du bâtiment et réglementations en vigueur.
- Avant l'installation ou la réparation: débranchez l'alimentation électrique; Il incombe à l'installateur des'assurer de la compatibilité électrique, mécanique et thermique.
- La source de lumière LED contenue dans ce luminaire ne doit être remplacée que par Zaneen, ou une personne approuvée par Zaneen.
- Recommandations: Conservez la (les) fiche (s) d'instructions en cas de maintenance et / ou de démontage

Accéder aux fiches techniques détaillées et à la politique de garantie sur la page du produit sur zaneen.com