

## SUPER-G 150 SURFACE SYSTEM SPECIFICATION SHEET

PROJECT	
TYPE	
NOTES	
QUANTITY	
DATE	



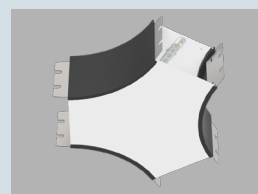
### ARCHITECTURAL | SUPER-G 150

Dynamic, buoyant, powerful – SUPER-G brings movement to light design. Inspired by the experience of high velocity, the avant-garde luminaires captivate with their liveliness and extraordinary freedom of design. The surface-mounted LED profile system with a width of 150 mm is composed of individual parts that can be seamlessly and infinitely arranged together. A 3x120° cross profile is available for creative light structures. The Y-Connector (available upon request) requires a custom diffuser that can be implemented into many design plans.

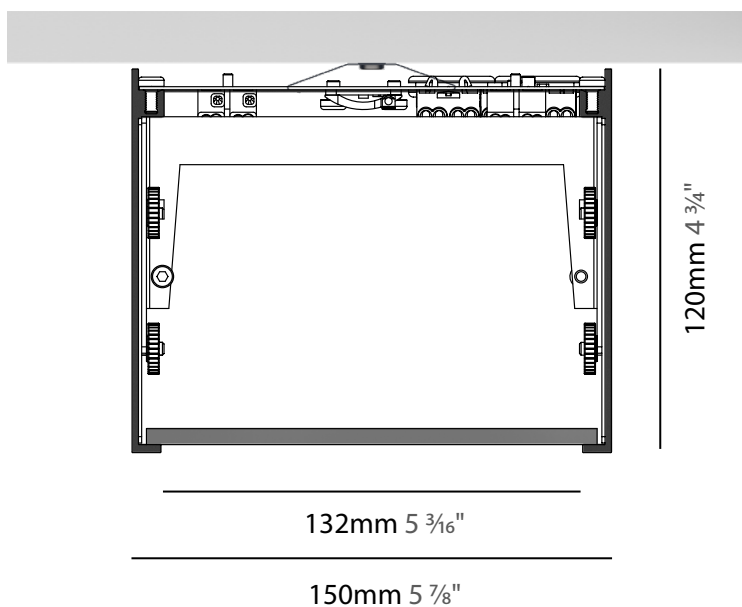
The opal diffuser for Super-G is LED optimized and provide absolutely glare-free and uniform light - right down to the end caps with specially integrated LEDs.



The profile can be finished in 28 colors and can also be customized, upon request, with individual cut-outs (eg texts or logos) along its entire length. Easily the best solution to be creative and make a space unique for branding, organizing, and motivation.



### SYSTEM PROFILE



SUPER-G 150 SURFACE SYSTEM  
SPECIFICATION SHEET

PROJECT

TYPE

NOTES

QUANTITY

DATE

SYSTEM GUIDE

To make your product selection and complete system specification, proceed with the following:  
review system options, create your system code in the field below and include your quantity.  
For the inserts/components, use the field beside each product name.  
Submit to quotes@zaneen.com to receive a formal BOM and finalized model numbers.

EXAMPLE A3SG150-SUR-SYS-UNV-DN-EMCIR

SYSTEM BUILD CODE: A3SG150-SUR-SYS-

qty

UPON REQUEST

Additional Options

Engraving Letters & Signs

Color Temperature

Integrated Spots

RGB-W/Tunable

Lumen Output

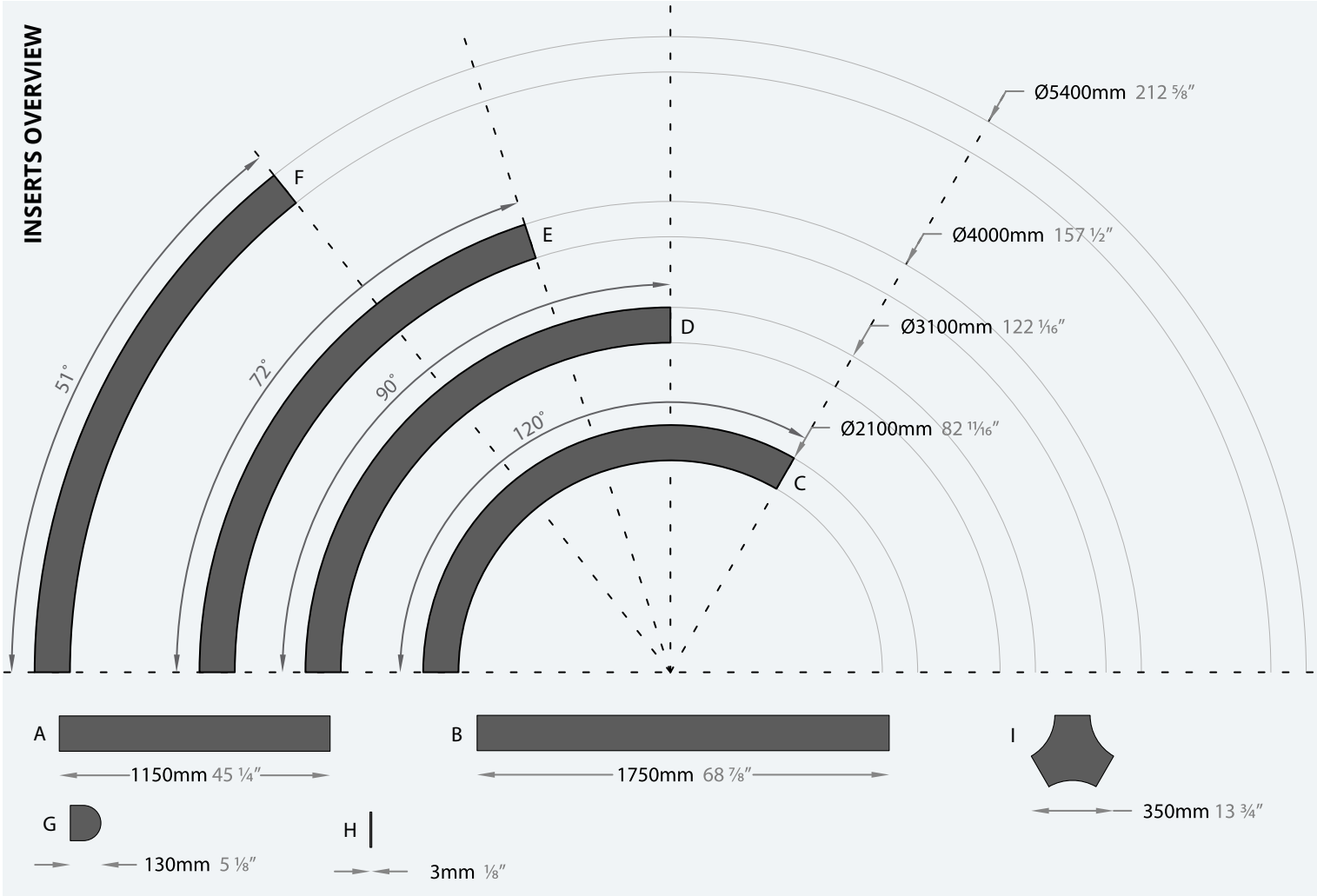
Custom Radii

Y-Connector

CRI



ELECTRICAL	Voltage	Dimming	Circuit
	UNV - 120/277V	DN - Non Dim	EMCIR - Emergency Circuit
	120 - 120V	DP - Phase Dim (Triac/ELV)	MC - Multiple Circuits
	347 - 347V	DV - 0-10V (100-1%)	
		DD - DALI (100-1%)	



SUPER-G 150 SURFACE SYSTEM  
SPECIFICATION SHEET

PROJECT

TYPE

NOTES

QUANTITY

DATE

INSERTS

STRAIGHT

INSERT BUILD CODE EXAMPLE: A32930-DN-27K-01

FINISHES OPTIONS:  
See page 7 for color options and use 2 digit numbers to indicate your choices

STRAIGHT 1150 - A	A32930-			qty	
	Dimming	CCT - 90 CRI	Finish	Delivered Lumen (lm)	
<div>Wattage: 19.6W</div>	DN - Non Dim	27K - 2700K	◆ ____ (28 colors)	2700K	1820
	DP - Phase Dim	30K - 3000K		3000K	1883
	DV - 0-10V	35K - 3500K		3500K	1899
		40K - 4000K		4000K	1915
STRAIGHT 1750 - B	A32932-			qty	
	Dimming	CCT - 90 CRI	Finish	Delivered Lumen (lm)	
<div>Wattage: 29.4W</div>	DN - Non Dim	27K - 2700K	◆ ____ (28 colors)	2700K	2730
	DP - Phase Dim	30K - 3000K		3000K	2825
	DV - 0-10V	35K - 3500K		3500K	2849
		40K - 4000K		4000K	2872

CURVES

CURVE 2100/120° - C	A32922-			qty	
	Dimming	CCT - 90 CRI	Finish	Delivered Lumen (lm)	
<div>Wattage: 34.3W</div>	DN - Non Dim	27K - 2700K	◆ ____ (28 colors)	2700K	3185
	DP - Phase Dim	30K - 3000K		3000K	3296
	DV - 0-10V	35K - 3500K		3500K	3326
		40K - 4000K		4000K	3351
CURVE 3100/90° - D	A32924-			qty	
	Dimming	CCT - 90 CRI	Finish	Delivered Lumen (lm)	
<div>Wattage: 39.2W</div>	DN - Non Dim	27K - 2700K	◆ ____ (28 colors)	2700K	3640
	DP - Phase Dim	30K - 3000K		3000K	3767
	DV - 0-10V	35K - 3500K		3500K	3799
		40K - 4000K		4000K	3830
CURVE 4000/72° - E	A32926-			qty	
	Dimming	CCT - 90 CRI	Finish	Delivered Lumen (lm)	
<div>Wattage: 39.2W</div>	DN - Non Dim	27K - 2700K	◆ ____ (28 colors)	2700K	3640
	DP - Phase Dim	30K - 3000K		3000K	3767
	DV - 0-10V	35K - 3500K		3500K	3799
		40K - 4000K		4000K	3830

PROJECT

TYPE

NOTES

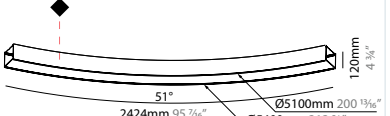
QUANTITY

DATE

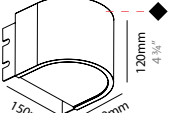
CURVES

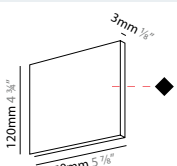

FINISHES OPTIONS:  
See page 7 for color options and use 2 digit numbers to indicate your choices


INSERTS

CURVE 5400/51° - F		A32928-			qty	
Wattage: 39.2W		Dimming	CCT - 90 CRI	Finish	Delivered Lumen (lm)	
	DN - Non Dim	27K - 2700K	◆ _____ (28 colors)	2700K	3640	
	DP - Phase Dim	30K - 3000K		3000K	3767	
	DV - 0-10V	35K - 3500K		3500K	3799	
		40K - 4000K		4000K	3830	

COMPONENTS

ROUNDED END CAP - G		A38113-			qty	
Wattage: 2.6W		Dimming	CCT - 90 CRI	Finish	Delivered Lumen (lm)	
	DN - Non Dim	27K - 2700K	◆ ____  (28 colors)	2700K	227	
	DP - Phase Dim	30K - 3000K		3000K	260	
	DV - 0-10V	35K - 3500K		3500K	298	
		40K - 4000K		4000K	304	

FLAT END CAP - H		A38346-		qty	
1 Pair		Finish			
		<div> _____</div> <div>(28 colors)</div>			

3X120° CROSS - I		A38153-			qty	
Wattage: 9.8W		Dimming	CCT - 90 CRI	Finish	Delivered Lumen (lm)	
	DN - Non Dim	27K - 2700K	◆ _____ (28 colors)	2700K	1063	
	DP - Phase Dim	30K - 3000K		3000K	1089	
	DV - 0-10V	35K - 3500K		3500K	1131	
		40K - 4000K		4000K	1154	

SUPER-G 150 SURFACE SYSTEM  
SPECIFICATION SHEET

PROJECT

TYPE

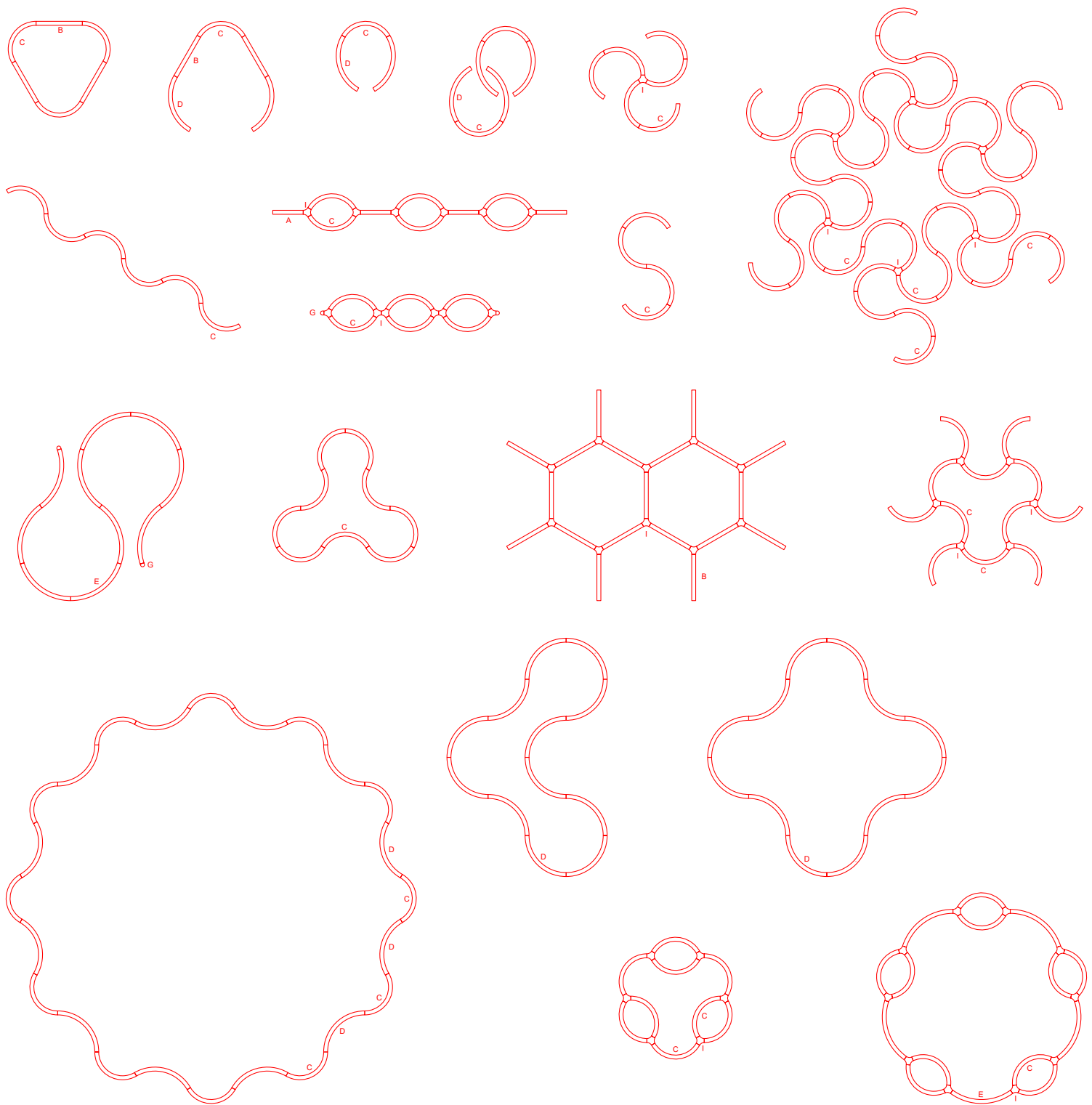
NOTES

QUANTITY

DATE

DESIGN IDEAS (Circle to select)

All configurations below can be done with standard lengths and curves.



## SUPER-G 150 SURFACE SYSTEM SPECIFICATION SHEET

PROJECT	
TYPE	
NOTES	
QUANTITY	
DATE	

### SYSTEM SUMMARY

#### System

##### Type

Surface  
Rated for Dry Locations Ceiling Mounted

##### Approval Status

CSA Certified to CSA and UL Standards

##### Emission

Refer to emission icon beside each light insert and symbol legend for descriptions

##### Efficiency

Acrylic Opal Diffuser (gravity-held) lens 43%

#### Profile

##### Measurement

w 150mm (5 7/8") x ht. 120mm (4 3/4")

##### Housing

Anodized extruded aluminum profile available per meter and field-cuttable  
Profiles have a maximum length of 3000mm (9' 10 1/4") and joined together with couplers to ensure uniform appearance and easy installation  
Welded flat end caps to profile

#### Electrical

##### Connections

Luminaries are pre-wired with a factory installed branch circuit wiring and quick-release connectors  
Through wiring is used to connect the luminaries

##### Power Feed

Located 2 inches from one end of the fixture, on top of the profile  
If a different location is required, please specify  
3 Wires - non-dimming or phase dimming  
4 Wires - two circuits of non-dimming or phase dimming  
5 Wires - 0-10V dimming or dali dimming

##### LED Driver

Integrated with inserts  
Electronic Class 2 driver, Universal 120V/277V  
Non-Dimming Driver, Phase Dimming Driver, and 0-10V Dimming Driver (10-100%)  
Consult factory for driver cutsheet  
If a different driver is required, please specify

##### Emergency Inverter Compatible

To be installed remotely, and provided by others  
It can be located up to 250m away from the fixture

Emergency circuit wiring is available upon request (Isolated track with dedicated driver used for emergency circuit will connect to emergency battery pack - supplied by others)

#### General

##### Features

Whether text, symbols, or branding, IDENTITY allows the luminaire to be customized on request with cut-outs along its entire length. Easily the best solution to be creative and make a space unique for branding, organizing, and motivation.  
Identity engraving for letters and signs have a standard price per character.

In addition to the straight and curved sections, a 3 x 120° node offers endless possibilities for implementing individuals design concepts

All LED-Boards are protected from electrostatic discharge (ESD) and direct contact with the LED by a highly transparent acrylic glass

##### Custom Requests and Additional Options

Availability depends on insert, system, and configuration  
Must consult factory and allow up to 5 business days for an answer

Color temperature, Special CRI, RGB-W, tunable, special diffuser, custom radii, y-connector, light inserts with different outputs, light inserts on different circuits

Invader spot integrated into opal diffuser available; depending on size and length

In addition to the standard radii, sections can be manufactured with individual bends starting from 350mm radius

##### Configuration

Consult factory with drawings

\*Shop drawings provided upon receiving purchase order

#### Warranty

ZANEEN provides a limited warranty from date of purchase to original purchaser

**LED Inserts:** 5 year tested for 50,000 hours at 70% lumen output (L70)

**LED Driver:** 5 year

**Non-Electrical Components:** 1 year

\*Check boxes to complete specification order and submit to quotes@zaneen.com to receive a formal BOM and a finalized model number

\*In a constant effort to supply the best product, we reserve the right to change specifications or materials without notice. The most recent specification sheets are found at zaneen.com

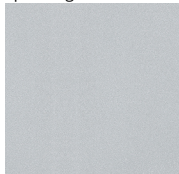
## SUPER-G 150 SURFACE SYSTEM SPECIFICATION SHEET

PROJECT	
TYPE	
NOTES	
QUANTITY	
DATE	

### FINISH COLORS



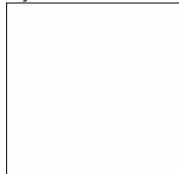
Sparkling Silver - 01



Black Velvet - 02



Crystal White - 03



Creamy - 04



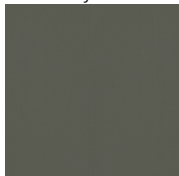
Hampton Bay - 05



Urban Forest - 07



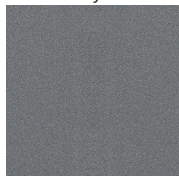
In the Army - 08



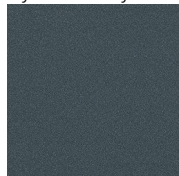
Rusty Angel - 09



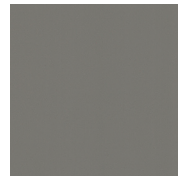
Fade to Grey - 12



Mysterious Grey - 13



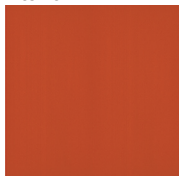
Lost Dream - 15



Purple Sky - 16



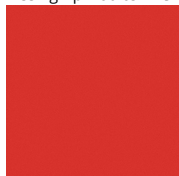
Fresh Oh - 17



Funky P - 18



Kissing Aphrodite - 19



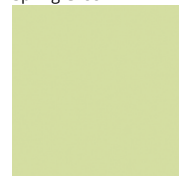
Poseidon's Paradise - 20



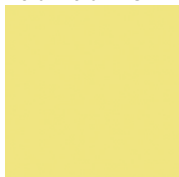
Blue Sky - 21



Spring Green - 22



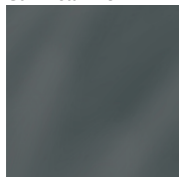
Mellow Yellow - 23



Golden Heart - 24



Gun Metal - 25



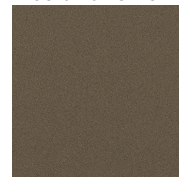
Champagne Cream - 26



Copper Mine - 27



Ancient Bronze - 28



Jazz Gold - 29



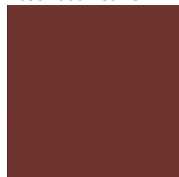
Olive Breeze - 30



Moonlight Silver - 31



Rosewood Red - 32



**Digital:** Not all screens are calibrated the same, and therefore, colors will appear differently between screens.

**Physical:** When texture is involved, there will be variations in color, character and tone within a product series and between product families.

**Gun Metal:** No Gun Metal finish is alike. It combines a mixture of transparent and black color particles which ensures a highly individual effect and no luminaire being identical.

**Champagne Cream, Copper Mine, Ancient Bronze + Jazz Gold:** These finishes have slight fading from specific powder coating production. Each luminaire will slightly vary.

RAL Color Upon Request



## SUPER-G 150 SURFACE SYSTEM

### SPECIFICATION SHEET

PROJECT \_\_\_\_\_

TYPE \_\_\_\_\_

NOTES \_\_\_\_\_

QUANTITY \_\_\_\_\_

DATE \_\_\_\_\_

### LEGEND

	floor-mounted		pivotal		special LED (upon request) RGB, RGBW, tunable, gold+, meat+, art+, fashion+
	wall and ceiling: recessed and surface mounted		rotating		warm dim / natural dimming LED
	ceiling-mounted and wall-mounted		illuminate tilted		rechargeable battery powered
	wall-mounted		color of suspension cable		fixture with natural vivid LED (upon request)
	omni-directional light distribution		length of suspension cable		color rendering index
	direct light distribution		reflector degree selection		color temperature
	direct/indirect light distribution		super spot		lumen (luminous flux)
	indirect light distribution		lens		efficacy (lumens per watt)
	asymmetric light distribution		lens pack		Unified Glare Rating (UGR) range from 5-40
	aura light distribution		shine ring		marine grade (AISI 316 stainless steel)
	round wall or ceiling cut-out		integrated shine ring with diffuser		walk on
	square wall or ceiling cut-out		free individual colors 01-29		drive on
	the supplied jig specifies the cutout dimensions		individual colors: 00 (free of charge), 01-25 (extra charge)		Dark Sky Compliance
	minimum distance (meters) lamp - object		luminaire part to be colored (F1)		Americans with Disabilities Act (less than 4" off the wall located between 27"-84" from floor)
	recessed depth		luminaire part to be colored (F2)		lamp protected against explosion
	ceiling thickness in mm		luminaire part to be colored (F3)		blown glass using traditional methods by master glass blower
	ceiling thickness selection		luminaire part to be colored (F4)		acoustic material
	dimmable DP (phase), DV (0-10V), DD (dali), DS (step-dim)		luminaire part to be colored (F5)		protection class I, protection insulation
	included or excluded LED driver/transformer/control gear		color of 3-circuit adaptor		protection class II, protection insulation
	separately switchable		indirect diffuser		ETL Certified to UL and CSA Standards
	sensor		direct diffuser		UL Certified to UL and CSA Standards
	remote control		ball-proof (upon request)		CSA Certified to UL and CSA Standards
	available upon request		accessory		Certified for North American Standards

### IP RATING

	protected against ingress of solid bodies greater than 12.5mm (finger)
	protected against ingress of solid bodies greater than 2.5mm protected against sprays of water up to 60 degrees from the vertical (rain)
	protected against ingress of solid bodies greater than 1mm (wire) no protection against the ingress of moisture
	protected against ingress of solid bodies greater than 1mm (wire) protected against sprays of water up to 60 degrees from the vertical (rain)
	protected against ingress of solid bodies greater than 1mm (wire) protected against water splashed from all directions
	protected against limited ingress of dust (wet rooms/covered outdoor areas) protected against water splashed from all directions
	protected against ingress of dust protected against jets of water
	protected against ingress of dust protected against powerful jets of water or heavy seas
	protected against ingress of dust protected against immersion of water between 15cm - 1m for 30 minutes
	protected against ingress of dust protected against immersion of water under pressure for long periods

### IK RATING

	protected against 0.14 joules impact (equivalent to 0.25kg mass dropped from 56mm above the surface)
	protected against 0.2 joules impact (equivalent to 0.25kg mass dropped from 80mm above the surface)
	protected against 0.35 joules impact (equivalent to 0.25kg mass dropped from 140mm above the surface)
	protected against 0.5 joules impact (equivalent to 0.25kg mass dropped from 200mm above the surface)
	protected against 0.7 joules impact (equivalent to 0.25kg mass dropped from 280mm above the surface)
	protected against 1 joules impact (equivalent to 0.25kg mass dropped from 400mm above the surface)
	protected against 2 joules impact (equivalent to 0.5kg mass dropped from 400mm above the surface)
	protected against 5 joules impact (equivalent to 1.7kg mass dropped from 300mm above the surface)
	protected against 10 joules impact (equivalent to 5.0kg mass dropped from 200mm above the surface)
	protected against 20 joules impact (equivalent to 5.0kg mass dropped from 400mm above the surface)

### WIRING DIAGRAMS

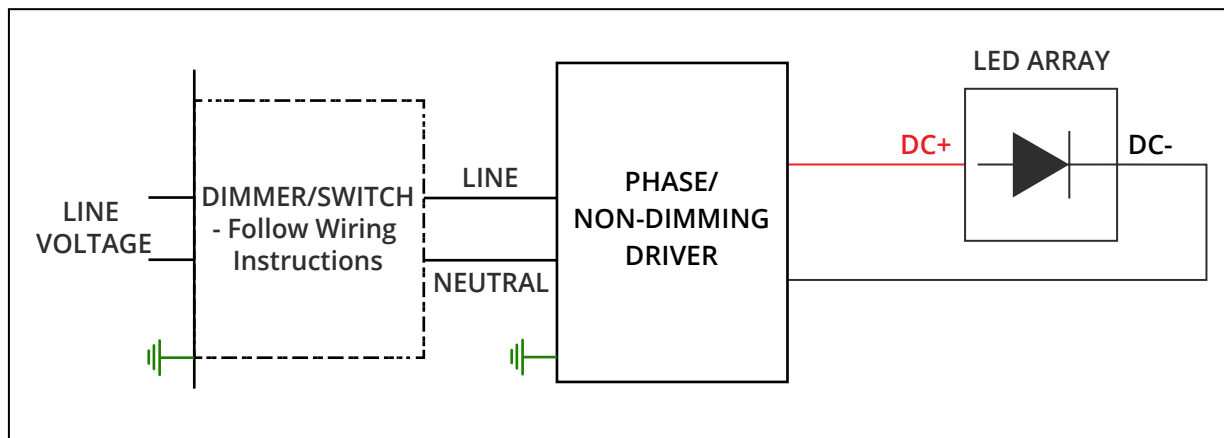
ALL ZANEEN FIXTURES ARE MANUFACTURED TO NORTH AMERICAN ELECTRICAL STANDARDS

Post Sales Support  
HQ 1-800-388-3382 X 625 support@zaneen.com

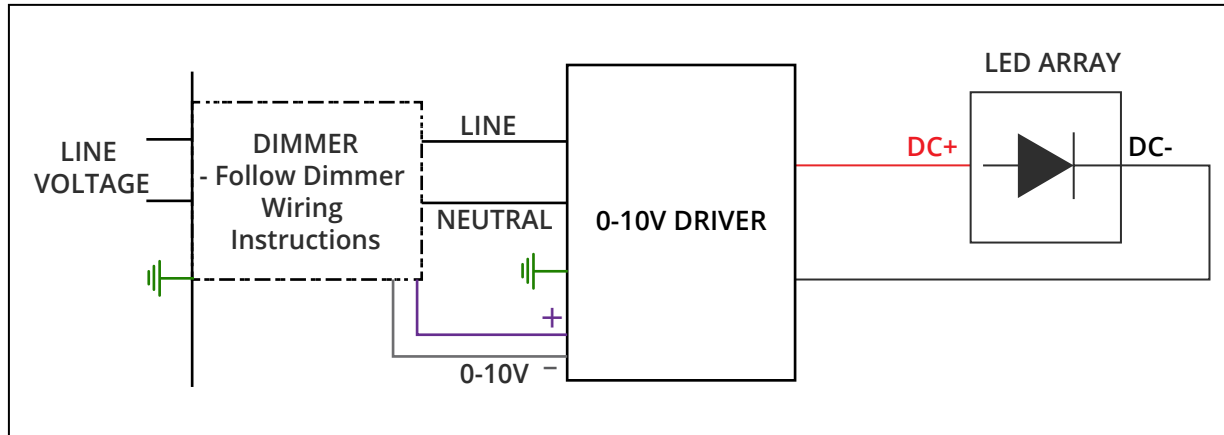
#### IMPORTANT

- Do NOT connect directly to line voltage
- There is a minimum and maximum load per driver (See fixture and driver specifications).
- Fixture MUST be connected to LED driver, prior to turning power on

#### PHASE/NON-DIMMING WIRING DIAGRAM



#### 0-10V DIMMING WIRING DIAGRAM



**SUPER-G 150** SURFACE SYSTEM  
SPECIFICATION SHEET

PROJECT

TYPE

NOTES

QUANTITY

DATE

Insert custom drawing here or attach with additional pages

