

SUPER-G 150 SUSPENSION SYSTEM SPECIFICATION SHEET

| | |
|----------|--|
| PROJECT | |
| TYPE | |
| NOTES | |
| QUANTITY | |
| DATE | |

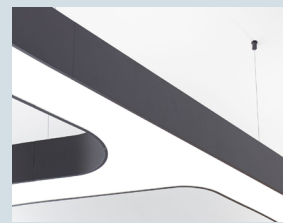
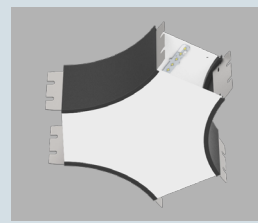


ARCHITECTURAL | SUPER-G 150

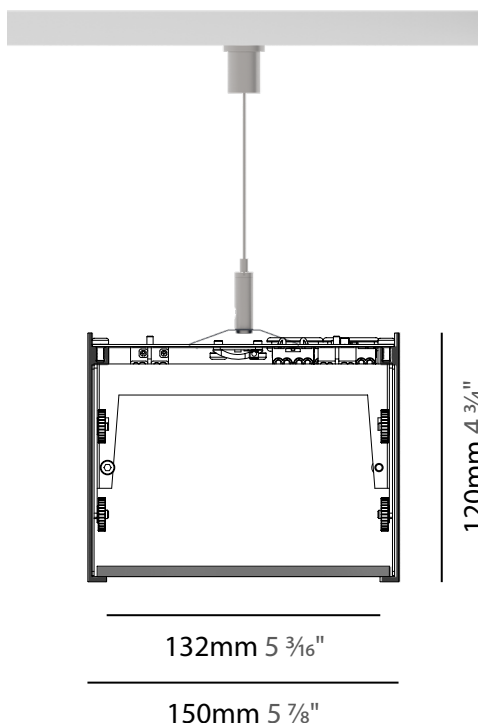
Dynamic, buoyant, powerful – SUPER-G brings movement to light design. Inspired by the experience of high velocity, the avant-garde luminaires captivate with their liveliness and extraordinary freedom of design. The suspended LED profile system with a width of 150mm is composed of individual parts that can be seamlessly and infinitely arranged together. A 3x120° cross profile is available for creative structures. The Y-Connector (available upon request) requires a custom diffuser that can be implemented into many design plans. Super-G is also available with indirect lighting. Direct and indirect lighting can be switched separately.



The opal diffuser for Super-G is LED optimized and provide absolutely glare-free and uniform light - right down to the end caps with specially integrated LEDs. The profile can be finished in 27 colors and be manufactured, on request, with individual cut-outs along its entire length.



SYSTEM PROFILE



A

SUPER-G 150 SUSPENSION SYSTEM
SPECIFICATION SHEET

PROJECT

TYPE

NOTES

QUANTITY

DATE

UPON REQUEST

Additional Options

Engraving Letters & Signs

Color Temperature

Integrated Spots

RGB-W/Tunable

Lumen Output

Custom Radii

Y-Connector

CRI



SYSTEM GUIDE

To make your product selection and complete system specification, proceed with the following:
review system options, create your system code in the field below and include your quantity.
For the inserts/components, use the field beside each product name.
Submit to quotes@zaneen.com to receive a formal BOM and finalized model numbers.

EXAMPLE A3SG150-SUS-SYS-UNV-DN-01-01-2M


SYSTEM BUILD CODE: A3SG150-SUS-SYS-

qty

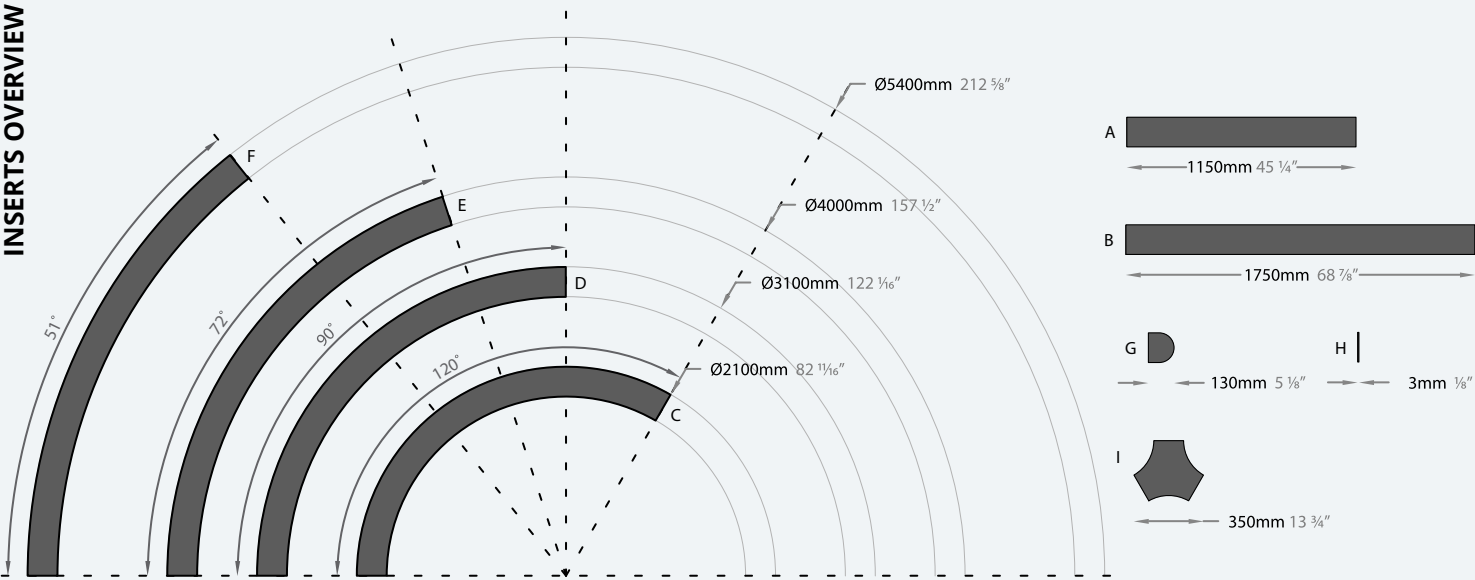
ELECTRICAL

| Voltage | Dimming | Circuit |
|----------------|----------------------------|---------------------------|
| UNV - 120/277V | DN - Non Dim | EMCIR - Emergency Circuit |
| 120 - 120V | DP - Phase Dim (Triac/ELV) | MC - Multiple Circuits |
| 347 - 347V | DV - 0-10V (100-1%) | |
| | DD - DALI (100-1%) | |

PHYSICAL

| Finishes | Cable Length |
|---|---|
| Installation Clip Power Feed (27 colors)  | 2M - 2000mm 6M - 6000mm XM - Custom (Upon Request) |
| See page 8 for color options and use 2 digit numbers to indicate your choices | |

INSERTS OVERVIEW



SUPER-G 150 SUSPENSION SYSTEM
SPECIFICATION SHEET

PROJECT

TYPE

NOTES

QUANTITY

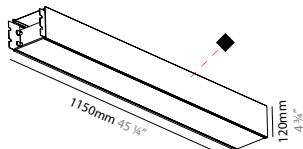
DATE

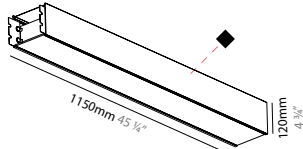
INSERTS

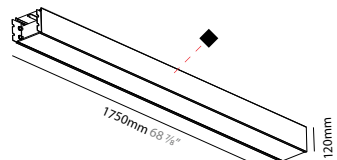
STRAIGHT

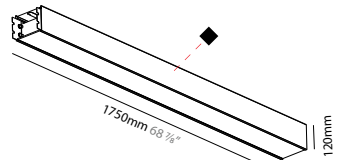
INSERT BUILD CODE EXAMPLE:
A30253-DN-27K-01

FINISHES OPTIONS:
See page 8 for color options and use 2 digit numbers to indicate your choices

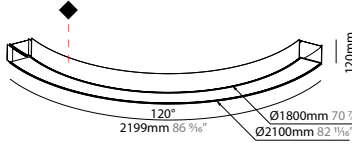
| STRAIGHT 1150 DIRECT - A | | A30253- | | | qty | |
|---|--|----------------|--------------|-----------------------|----------------------|------|
| Wattage: 19.6W | | Dimming | CCT - 90 CRI | Finish | Delivered Lumen (lm) | |
|  | | DN - Non Dim | 27K - 2700K | ◆ ____ (27 colors) | 2700K | 1820 |
| | | DP - Phase Dim | 30K - 3000K | | 3000K | 1883 |
| | | DV - 0-10V | 35K - 3500K | | 3500K | 1899 |
| | | | 40K - 4000K | | 4000K | 1915 |

| STRAIGHT 1150 DIR/IND - A | | A30531- | | | | qty | | | | | |
|---|--|----------------|--------------|----------------|------------------------|----------------------|-------|-------|-------|-------|------|
| Wattage: 29.4W | | Dimming | CCT - Direct | CCT - Indirect | Finish | Delivered Lumen (lm) | | | | | |
|  | | DN - Non Dim | 27K - 2700K | 27K - 2700K | ◆ — (27 colors) | IND | 2700K | 3000K | 3500K | 4000K | |
| | | DP - Phase Dim | 30K - 3000K | 30K - 3000K | | DIR | 2700K | 2809 | 2841 | 2849 | 2857 |
| | | DV - 0-10V | 35K - 3500K | 35K - 3500K | | 3000K | 2874 | 2907 | 2915 | 2923 | |
| | | | 40K - 4000K | 40K - 4000K | | 3500K | 2890 | 2923 | 2931 | 2939 | |
| | | | | | | 4000K | 2906 | 2939 | 2947 | 2955 | |

| STRAIGHT 1750 DIRECT - B | | A30255- | | | qty | |
|---|--|----------------|--------------|-----------------------|----------------------|------|
| Wattage: 29.4W | | Dimming | CCT - 90 CRI | Finish | Delivered Lumen (lm) | |
|  | | DN - Non Dim | 27K - 2700K | ◆ ____ (27 colors) | 2700K | 2730 |
| | | DP - Phase Dim | 30K - 3000K | | 3000K | 2825 |
| | | DV - 0-10V | 35K - 3500K | | 3500K | 2849 |
| | | | 40K - 4000K | | 4000K | 2872 |
| | | | | | | |

| STRAIGHT 1750 DIR/IND - B | | A30533- | | | | qty | | | | |
|---|--|----------------|--------------|----------------|---------------------------|----------------------|-------|-------|-------|-------|
| Wattage: 44.1W | | Dimming | CCT - Direct | CCT - Indirect | Finish | Delivered Lumen (lm) | | | | |
|  | | DN - Non Dim | 27K - 2700K | 27K - 2700K | ◆ ____ (27 colors) | IND | | | | |
| | | DP - Phase Dim | 30K - 3000K | 30K - 3000K | | DIR | 2700K | 3000K | 3500K | 4000K |
| | | DV - 0-10V | 35K - 3500K | 35K - 3500K | | 2700K | 4213 | 4262 | 4274 | 4286 |
| | | | 40K - 4000K | 40K - 4000K | | 3000K | 4311 | 4360 | 4372 | 4384 |
| | | | | | | 3500K | 4335 | 4385 | 4397 | 4409 |
| | | | | | 4000K | 4359 | 4409 | 4421 | 4433 | |

CURVES

| CURVE 2100/120° DIRECT - C | | A30245- | | | qty | |
|---|----------------|-------------|-----------------------|--------|----------------------|--|
| Wattage: 34.3W | | Dimming | CCT - 90 CRI | Finish | Delivered Lumen (lm) | |
|  | DN - Non Dim | 27K - 2700K | ◆ ____ (27 colors) | 2700K | 3185 | |
| | DP - Phase Dim | 30K - 3000K | | 3000K | 3296 | |
| | DV - 0-10V | 35K - 3500K | | 3500K | 3326 | |
| | | 40K - 4000K | | 4000K | 3351 | |
| | | | | | | |

SUPER-G 150 SUSPENSION SYSTEM

SPECIFICATION SHEET

PROJECT _____

TYPE _____

NOTES _____

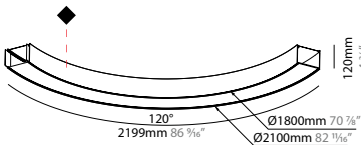
QUANTITY _____

DATE _____

INSERTS

CURVES

FINISHES OPTIONS:
See page 8 for color options and use 2 digit numbers to indicate your choices

| CURVE 2100/120° DIR/IND - C | | A30535- | | | qty | | | | | |
|---|-----------------------|--------------------|--------------------|---------------------------|--------|----------------------|-------|-------|-------|------|
| Wattage: 53.8W | | Dimming | CCT - Direct | CCT - Indirect | Finish | Delivered Lumen (lm) | | | | |
|  | DN - Non Dim | 27K - 2700K | 27K - 2700K | ◆ ____ (27 colors) | IND | 2700K | 3000K | 3500K | 4000K | |
| | DP - Phase Dim | 30K - 3000K | 30K - 3000K | | DIR | 2700K | 5202 | 5269 | 5285 | 5301 |
| | DV - 0-10V | 35K - 3500K | 35K - 3500K | | 3000K | 5318 | 5384 | 5401 | 5417 | |
| | 40K - 4000K | 40K - 4000K | 3500K | | 5347 | 5413 | 5430 | 5446 | | |
| | | | 4000K | | 5375 | 5441 | 5458 | 5474 | | |

| CURVE 3100/90° DIRECT - D | | A30247- | | | qty | | | | | |
| Wattage: 39.2W | | Dimming | CCT - 90 CRI | | Finish | Delivered Lumen (lm) | | | | |
| | **DN** - Non Dim | **27K** - 2700K | ◆ ____ (27 colors) | 2700K | 3640 | | | | |
| **DP** - Phase Dim | **30K** - 3000K | 3000K | 3767 | | | | |
| **DV** - 0-10V | **35K** - 3500K | 3500K | 3799 | | | | |
| **40K** - 4000K | 4000K | 3830 | | | | |
| | | | | |
| CURVE 3100/90° DIR/IND - D | | A30537- | | | qty | | | | | |
| Wattage: 58.7W | | Dimming | CCT - Direct | CCT - Indirect | Finish | Delivered Lumen (lm) | | | | |
| | **DN** - Non Dim | **27K** - 2700K | **27K** - 2700K | ◆ ____ (27 colors) | IND | 2700K | 3000K | 3500K | 4000K |
| **DP** - Phase Dim | **30K** - 3000K | **30K** - 3000K | DIR | 2700K | 5617 | 5683 | 5699 | 5715 |
| **DV** - 0-10V | **35K** - 3500K | **35K** - 3500K | 3000K | 5748 | 5814 | 5830 | 5846 |
| **40K** - 4000K | **40K** - 4000K | 3500K | 5781 | 5846 | 5862 | 5878 |
| | | 4000K | 5813 | 5878 | 5894 | 5910 |
| CURVE 4000/72° DIRECT - E | | A30249- | | | qty | | | | | |
| Wattage: 39.2W | | Dimming | CCT - 90 CRI | | Finish | Delivered Lumen (lm) | | | | |
| | **DN** - Non Dim | **27K** - 2700K | ◆ ____ (27 colors) | 2700K | 3640 | | | | |
| **DP** - Phase Dim | **30K** - 3000K | 3000K | 3767 | | | | |
| **DV** - 0-10V | **35K** - 3500K | 3500K | 3799 | | | | |
| **40K** - 4000K | 4000K | 3830 | | | | |
| | | | | |
| CURVE 4000/72° DIR/IND - E | | A30539- | | | qty | | | | | |
| Wattage: 58.7W | | Dimming | CCT - Direct | CCT - Indirect | Finish | Delivered Lumen (lm) | | | | |
| | **DN** - Non Dim | **27K** - 2700K | **27K** - 2700K | ◆ ____ (27 colors) | IND | 2700K | 3000K | 3500K | 4000K |
| **DP** - Phase Dim | **30K** - 3000K | **30K** - 3000K | DIR | 2700K | 5617 | 5683 | 5699 | 5715 |
| **DV** - 0-10V | **35K** - 3500K | **35K** - 3500K | 3000K | 5748 | 5814 | 5830 | 5846 |
| **40K** - 4000K | **40K** - 4000K | 3500K | 5781 | 5846 | 5862 | 5878 |
| | | 4000K | 5813 | 5878 | 5894 | 5910 |

SUPER-G 150 SUSPENSION SYSTEM
SPECIFICATION SHEET

PROJECT

TYPE

NOTES

QUANTITY

DATE

INSERTS

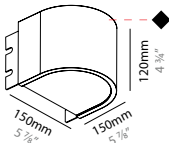
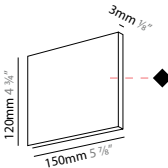
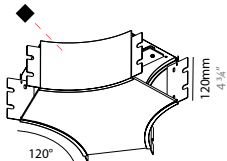
CURVES

FINISHES OPTIONS:
See page 8 for color options and use 2 digit numbers to indicate your choices

| CURVE 5400/51° DIRECT - F | | A30251- | | | qty | |
|---------------------------|--|----------------|--------------|-----------------------|----------------------|------|
| Wattage: 39.2W | | Dimming | CCT - 90 CRI | Finish | Delivered Lumen (lm) | |
| | | DN - Non Dim | 27K - 2700K | ◆ ____ (27 colors) | 2700K | 3640 |
| | | DP - Phase Dim | 30K - 3000K | | 3000K | 3767 |
| | | DV - 0-10V | 35K - 3500K | | 3500K | 3799 |
| | | | 40K - 4000K | | | 3830 |

| CURVE 5400/51° DIR/IND - F | | A30541- | | | | | qty | | | | |
|----------------------------|--|----------------|--------------|----------------|-----------------------|----------------------|-------|-------|-------|-------|------|
| Wattage: 58.7W | | Dimming | CCT - Direct | CCT - Indirect | Finish | Delivered Lumen (lm) | | | | | |
| | | DN - Non Dim | 27K - 2700K | 27K - 2700K | ◆ ____ (27 colors) | IND | 2700K | 3000K | 3500K | 4000K | |
| | | DP - Phase Dim | 30K - 3000K | 30K - 3000K | | DIR | 2700K | 5617 | 5683 | 5699 | 5715 |
| | | DV - 0-10V | 35K - 3500K | 35K - 3500K | | | 3000K | 5748 | 5814 | 5830 | 5846 |
| | | | | | | | 3500K | 5781 | 5846 | 5862 | 5878 |
| | | | | | | | 4000K | 5813 | 5878 | 5894 | 5910 |
| | | | | | | | | | | | |

COMPONENTS

| ROUNDED END CAP - G | | A38115- | | | | |
|---|--|-----------------------|--------------------|-----------------------|-----------------------------|------|
| Wattage: 2.6W | | Dimming | CCT - 90 CRI | Finish | qty Delivered Lumen (lm) | |
|  | | DN - Non Dim | 27K - 2700K | ◆ ____ (27 colors) | 2700K | 227 |
| | | DP - Phase Dim | 30K - 3000K | | 3000K | 260 |
| | | DV - 0-10V | 35K - 3500K | | 3500K | 298 |
| | | | 40K - 4000K | | 4000K | 304 |
| FLAT END CAP - H | | A38346- | | | | |
| 1 Pair | | Finish | qty | | | |
|  | | ◆ ____ (27 colors) | | | | |
| 3X120° CROSS - I | | A38151- | | | | |
| Wattage: 9.8W | | Dimming | CCT - 90 CRI | Finish | qty Delivered Lumen (lm) | |
|  | | DN - Non Dim | 27K - 2700K | ◆ ____ (27 colors) | 2700K | 1063 |
| | | DP - Phase Dim | 30K - 3000K | | 3000K | 1089 |
| | | DV - 0-10V | 35K - 3500K | | 3500K | 1131 |
| | | | 40K - 4000K | | 4000K | 1154 |

SUPER-G 150 SUSPENSION SYSTEM
SPECIFICATION SHEET

PROJECT

TYPE

NOTES

QUANTITY

DATE

DESIGN IDEAS (Circle to select)

All configurations below can be done with standard lengths and curves.



SUPER-G 150 SUSPENSION SYSTEM

SPECIFICATION SHEET

| |
|----------|
| PROJECT |
| TYPE |
| NOTES |
| QUANTITY |
| DATE |

SYSTEM SUMMARY

System

Type
Suspension
Rated for Dry Locations Ceiling Mounted

Approval Status
CSA Certified to CSA and UL Standards

Emission
Refer to emission icon beside each light insert and symbol legend for descriptions

Efficiency
Acrylic Opal Diffuser (gravity-held) lens 43%

Profile

Measurement
w 150mm (5 7/8") x ht. 120mm (4 3/4")

Housing
Anodized extruded aluminum profile available per meter and field-cuttable
Profiles have a maximum length of 3000mm (9' 10 1/4") and joined together with couplers to ensure uniform appearance and easy installation
Welded flat end caps to profile

Suspension Lengths
Standard lengths include 2000mm and 6000mm
Any custom length must be pre-cut on site
Maximum custom length available is 10000mm

Electrical

Connections
Luminaries are pre-wired with a factory installed branch circuit wiring and quick-release connectors
Through wiring is used to connect the luminaries

Power Feed
Located 2 inches from one end of the fixture, on top of the profile
If a different location is required, please specify
3 Wires - non-dimming or phase dimming
4 Wires - two circuits of non-dimming or phase dimming
5 Wires - 0-10V dimming or dali dimming

LED Driver
Integrated with inserts
Electronic Class 2 driver, Universal 120V/277V
Non-Dimming Driver, Phase Dimming Driver, and 0-10V Dimming Driver (10-100%)
Consult factory for driver cutsheet
If a different driver is required, please specify

Emergency Inverter Compatible
To be installed remotely, and provided by others
It can be located up to 250m away from the fixture

Emergency circuit wiring is available upon request (Isolated track with dedicated driver used for emergency circuit will connect to emergency battery pack - supplied by others)

General

Features
Whether text, symbols, or branding, IDENTITY allows the luminaire to be customized on request with cut-outs along its entire length. Easily the best solution to be creative and make a space unique for branding, organizing, and motivation.
Identity engraving for letters and signs have a standard price per character.

In addition to the straight and curved sections, a 3 x 120° node offers endless possibilities for implementing individuals design concepts

All LED-Boards are protected from electrostatic discharge (ESD) and direct contact with the LED by a highly transparent acrylic glass

Custom Requests and Additional Options
Availability depends on insert, system, and configuration
Must consult factory and allow up to 5 business days for an answer

Color temperature, Special CRI, RGB-W, tunable, special diffuser, custom radii, y-connector, light inserts with different outputs, light inserts on different circuits

Invader spot integrated into opal diffuser available; depending on size and length

Indirect-only is available with aluminum profile cap replacing the direct

In addition to the standard radii, sections can be manufactured with individual bends starting from 350mm radius

Configuration
Consult factory with drawings

*Shop drawings provided upon receiving purchase order

Warranty

ZANEEN provides a limited warranty from date of purchase to original purchaser

LED Inserts: 5 year tested for 50,000 hours at 70% lumen output (L70)
LED Driver: 5 year
Non-Electrical Components: 1 year

*Check boxes to complete specification order and submit to quotes@zaneen.com to receive a formal BOM and a finalized model number

*In a constant effort to supply the best product, we reserve the right to change specifications or materials without notice. The most recent specification sheets are found at zaneen.com

SUPER-G 150 SUSPENSION SYSTEM

SPECIFICATION SHEET

PROJECT _____

TYPE _____

NOTES _____

QUANTITY _____

DATE _____

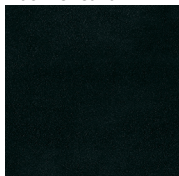
FINISH COLORS



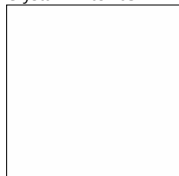
Sparkling Silver - 01



Black Velvet - 02



Crystal White - 03



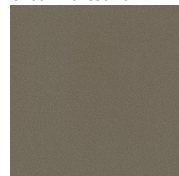
Creamy - 04



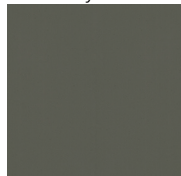
Hampton Bay - 05



Urban Forest - 07



In the Army - 08



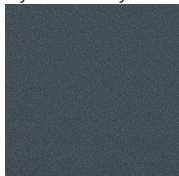
Rusty Angel - 09



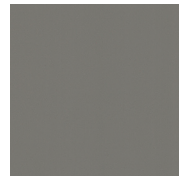
Fade to Grey - 12



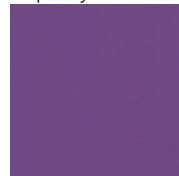
Mysterious Grey - 13



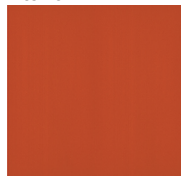
Lost Dream - 15



Purple Sky - 16



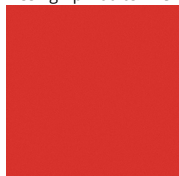
Fresh Oh - 17



Funky P - 18



Kissing Aphrodite - 19



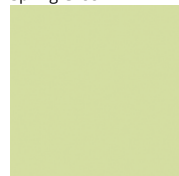
Poseidon's Paradise - 20



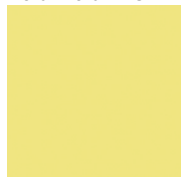
Blue Sky - 21



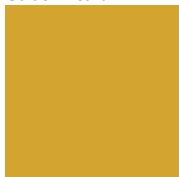
Spring Green - 22



Mellow Yellow - 23



Golden Heart - 24



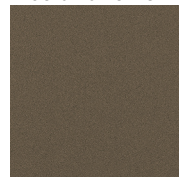
Champagne Cream - 26



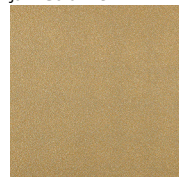
Copper Mine - 27



Ancient Bronze - 28



Jazz Gold - 29



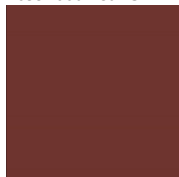
Olive Breeze - 30







Moonlight Silver - 31



Rosewood Red - 32



CABLE COLORS (UPON REQUEST)

-  White
-  Black
-  Orange
-  Red

Digital: Not all screens are calibrated the same, and therefore, colors will appear differently between screens.

Physical: When texture is involved, there will be variations in color, character and tone within a product series and between product families.

Champagne Cream, Copper Mine, Ancient Bronze + Jazz Gold: These finishes have slight fading from specific powder coating production. Each luminaire will slightly vary.

RAL Color Upon Request



SUPER-G 150 SUSPENSION SYSTEM

SPECIFICATION SHEET

| | |
|----------|--|
| PROJECT | |
| TYPE | |
| NOTES | |
| QUANTITY | |
| DATE | |

LEGEND

| | | | | | |
|--|---|--|--|--|--|
| | floor-mounted | | pivotal | | special LED (upon request) RGB, RGBW, tunable, gold+, meat+, art+, fashion+ |
| | wall and ceiling: recessed and surface mounted | | rotating | | warm dim / natural dimming LED |
| | ceiling-mounted and wall-mounted | | illuminate tilted | | rechargeable battery powered |
| | wall-mounted | | color of suspension cable | | fixture with natural vivid LED (upon request) |
| | omni-directional light distribution | | length of suspension cable | | color rendering index |
| | direct light distribution | | reflector degree selection | | color temperature |
| | direct/indirect light distribution | | super spot | | lumen (luminous flux) |
| | indirect light distribution | | lens | | efficacy (lumens per watt) |
| | asymmetric light distribution | | lens pack | | Unified Glare Rating (UGR) range from 5-40 |
| | aura light distribution | | shine ring | | marine grade (AISI 316 stainless steel) |
| | round wall or ceiling cut-out | | integrated shine ring with diffuser | | walk on |
| | square wall or ceiling cut-out | | free individual colors 01-29 | | drive on |
| | the supplied jig specifies the cutout dimensions | | individual colors: 00 (free of charge), 01-25 (extra charge) | | Dark Sky Compliance |
| | minimum distance (meters) lamp - object | | luminaire part to be colored (F1) | | Americans with Disabilities Act (less than 4" off the wall located between 27"-84" from floor) |
| | recessed depth | | luminaire part to be colored (F2) | | lamp protected against explosion |
| | ceiling thickness in mm | | luminaire part to be colored (F3) | | blown glass using traditional methods by master glass blower |
| | ceiling thickness selection | | luminaire part to be colored (F4) | | acoustic material |
| | dimmable DP (phase), DV (0-10V), DD (dali), DS (step-dim) | | luminaire part to be colored (F5) | | protection class I, protection insulation |
| | included or excluded LED driver/transformer/control gear | | color of 3-circuit adaptor | | protection class II, protection insulation |
| | separately switchable | | indirect diffuser | | ETL Certified to UL and CSA Standards |
| | sensor | | direct diffuser | | UL Certified to UL and CSA Standards |
| | remote control | | ball-proof (upon request) | | CSA Certified to UL and CSA Standards |
| | available upon request | | accessory | | Certified for North American Standards |

IP RATING

| | |
|--|--|
| | protected against ingress of solid bodies greater than 12.5mm (finger) |
| | protected against ingress of solid bodies greater than 2.5mm protected against sprays of water up to 60 degrees from the vertical (rain) |
| | protected against ingress of solid bodies greater than 1mm (wire) no protection against the ingress of moisture |
| | protected against ingress of solid bodies greater than 1mm (wire) protected against sprays of water up to 60 degrees from the vertical (rain) |
| | protected against ingress of solid bodies greater than 1mm (wire) protected against water splashed from all directions |
| | protected against limited ingress of dust (wet rooms/covered outdoor areas) protected against water splashed from all directions |
| | protected against ingress of dust protected against jets of water |
| | protected against ingress of dust protected against powerful jets of water or heavy seas |
| | protected against ingress of dust protected against immersion of water between 15cm - 1m for 30 minutes |
| | protected against ingress of dust protected against immersion of water under pressure for long periods |

IK RATING

| | |
|--|---|
| | protected against 0.14 joules impact (equivalent to 0.25kg mass dropped from 56mm above the surface) |
| | protected against 0.2 joules impact (equivalent to 0.25kg mass dropped from 80mm above the surface) |
| | protected against 0.35 joules impact (equivalent to 0.25kg mass dropped from 140mm above the surface) |
| | protected against 0.5 joules impact (equivalent to 0.25kg mass dropped from 200mm above the surface) |
| | protected against 0.7 joules impact (equivalent to 0.25kg mass dropped from 280mm above the surface) |
| | protected against 1 joules impact (equivalent to 0.25kg mass dropped from 400mm above the surface) |
| | protected against 2 joules impact (equivalent to 0.5kg mass dropped from 400mm above the surface) |
| | protected against 5 joules impact (equivalent to 1.7kg mass dropped from 300mm above the surface) |
| | protected against 10 joules impact (equivalent to 5.0kg mass dropped from 200mm above the surface) |
| | protected against 20 joules impact (equivalent to 5.0kg mass dropped from 400mm above the surface) |

WIRING DIAGRAMS

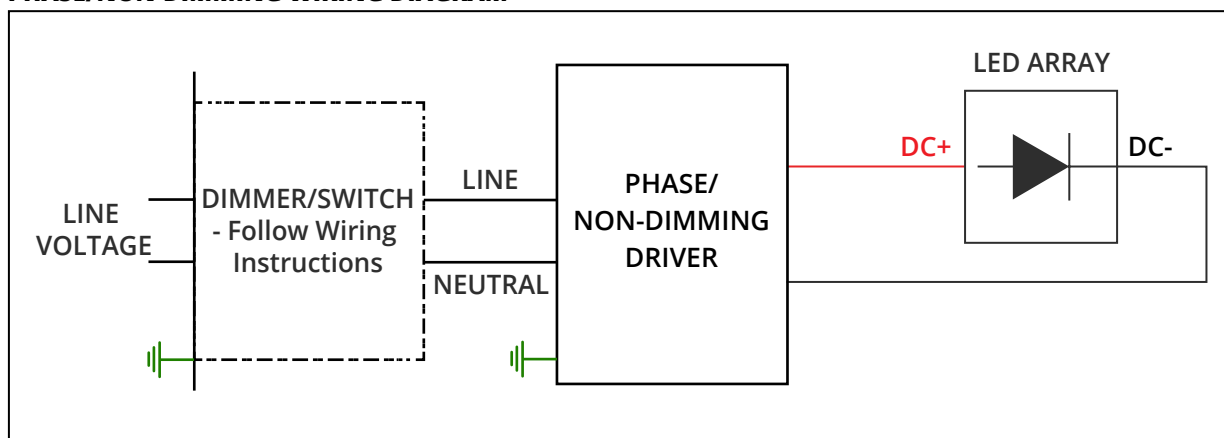
ALL ZANEEN FIXTURES ARE MANUFACTURED TO NORTH AMERICAN ELECTRICAL STANDARDS

Post Sales Support
HQ 1-800-388-3382 X 625 support@zaneen.com

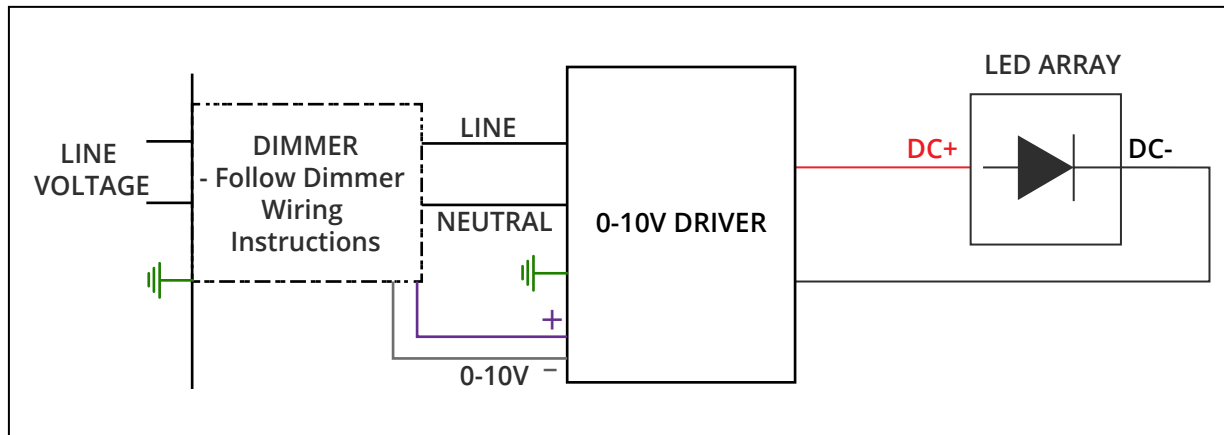
IMPORTANT

- Do NOT connect directly to line voltage
- There is a minimum and maximum load per driver (See fixture and driver specifications).
- Fixture MUST be connected to LED driver, prior to turning power on

PHASE/NON-DIMMING WIRING DIAGRAM



0-10V DIMMING WIRING DIAGRAM





SUPER-G 150 SUSPENSION SYSTEM
SPECIFICATION SHEET

PROJECT

TYPE

NOTES

QUANTITY

DATE

Insert custom drawing here or attach with additional pages

