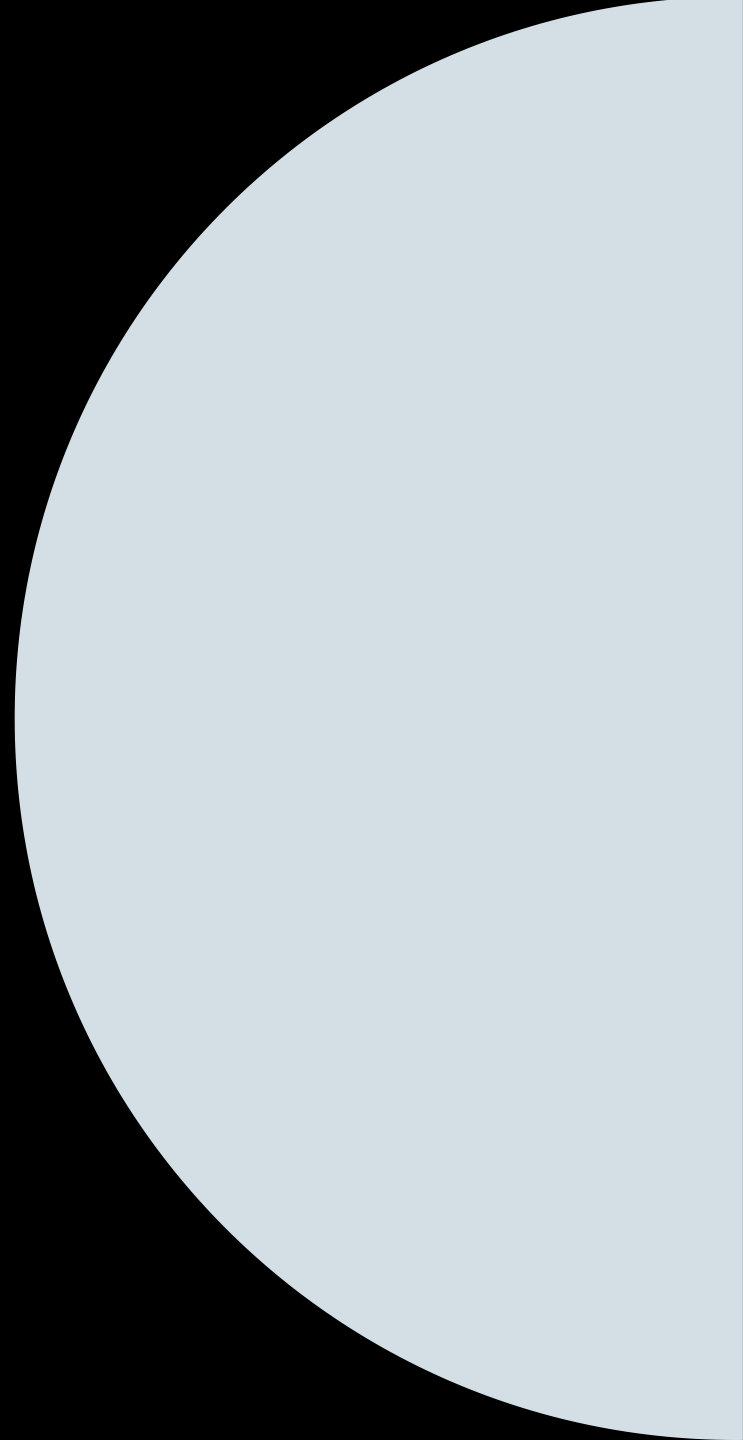


Architectural New Products

A round-up of our product additions

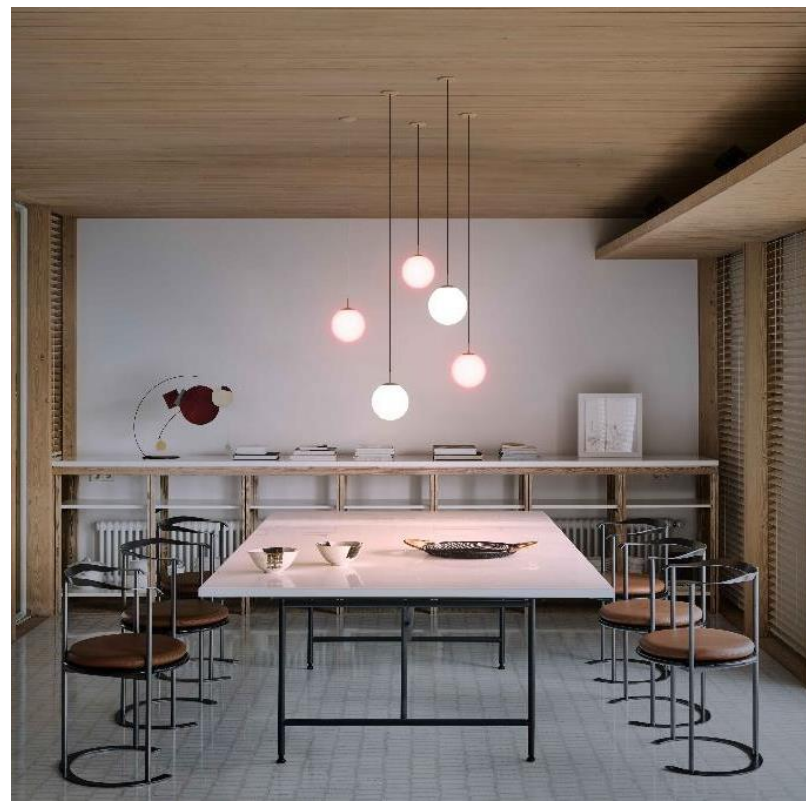
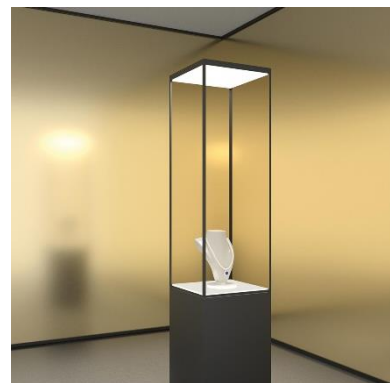
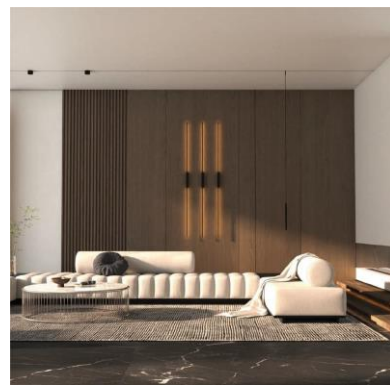
ZANEEN



Architectural New Products

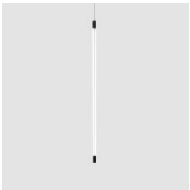
35 Candela	Harmony Elipse	Invader Micro Dot	Sagittarius
35 Track	Harmony Ring	Just Black Acoustic	Sign Drum
Bilo	Harmony Round	Just Black Line	Silhouettes
Centaur	Harmony Square	Just Black System	Slider
Code	Harmony-Uniform	Level	Snooker <i>Metal</i>
Code System	Imagine Micro	Loop	Studio Collection
Comet	Imagine Micro Flex	Lullaby	Unity
Compacto	Infinite Hexagon	Nanoperfetto	Viavai
Compacto W	Infinite Honeycomb	Oiko Pro Slim	Victory Acoustic
Glorious Acoustic	Infinite Ring	Oiko Pro Square	Victory Acoustic Light Panel
Glorious Acoustic Light Panel	Infinite Round	Oiko Pro Square Comfort	Victory Acoustic Panel
Glorious Acoustic Panel	Infinite Square	Ovalis	Virgo
Glorious Slim Acoustic	Infinite-Canvas	Quantum Acoustic	Zoom
G-Mini Channel	Infinite-Horizon	Quantum Acoustic Light Panel	
G-Mini Round	Infinite-Stellar	Quantum Acoustic Panel	

Stay tuned for more products coming soon!



35 Candela

- 35 Candela is an expansion of the popular 35 Linear series, reimagined as a bold vertical light fixture.
- This suspended luminaire features a clean, minimalist design while delivering perfectly balanced illumination that enhances any space.
- It offers a lighting solution that meets both aesthetic and functional needs, creating a dynamic atmosphere.
- 35 Candela makes a strong visual impact, especially in spaces with double-height ceilings or grand architectural features.



35 Candela



35 Track

- 35 Track is an innovative lighting system that blends elegant design with exceptional versatility.
- Its modular structure features a cylindrical profile that provides indirect uplight, direct downlight, and accent lighting, offering maximum flexibility.
- It supports various light inserts such as Miniroller, Nanoperfetto, and Microperfetto track spots, which can be freely positioned to adapt to specific project requirements.
- Each linear module powers the next through an integrated connection, ensuring smooth and continuous functionality.
- The 35 Track system enables designers to craft dynamic, architectural lighting compositions with independent control over each lighting component.



35 Track

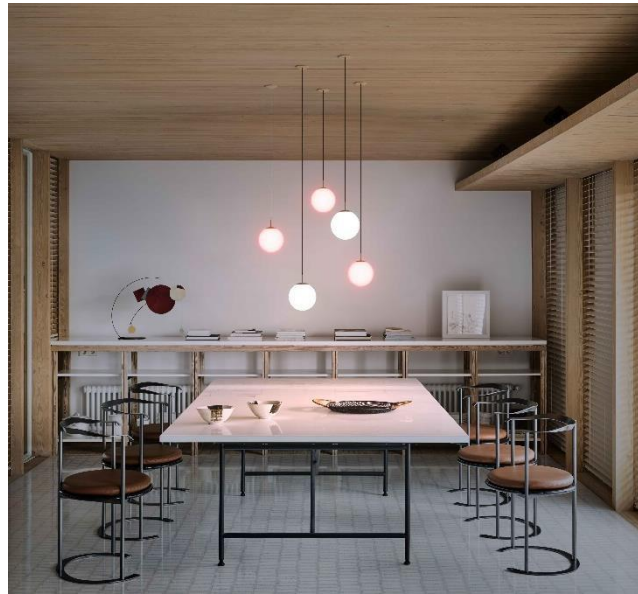


Bilo

- The mouth-blown opal glass globe design offers timeless elegance and ensures seamless light diffusion for a glare-free, visually comfortable environment.
- Available with a "touch of color" within Bilo for added personality and effect, select from vibrant blue, red, green, yellow, orange, or standard opal.
- Even light distribution makes it ideal for both general illumination and creating mood-enhancing, inviting ambiances in any space.
- Bilo offers a versatile design that can be used individually for a minimalist aesthetic or integrated into various track systems like ClickTrack, Minimal Track, G-Board or G-Channel.
- The advanced COB technology delivers high color rendering with a compact design, providing uniform, surface-like light emission for enhanced visual appeal.

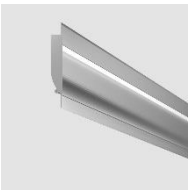


Bilo



Centaur

- Centaur creates soft, indirect lighting with a warm, ambient glow, mimicking cove lighting. Its easy installation ensures a sophisticated effect with minimal effort.
- Centaur is designed to seamlessly integrate into architectural spaces, enhancing environments with its discreet profile and refined aesthetic.
- Featuring an advanced LED strip and opal diffuser, Centaur delivers efficient and uniform illumination, perfect for highlighting architectural features and creating visual interest.
- The recessed profile of Centaur allows for versatile installation on both plasterboard and masonry, enabling the creation of linear luminous compositions on walls or ceilings to suit various design preferences.
- Centaur shapes light with precision, adding both functional lighting and aesthetic value by accentuating structural elements and defining spaces with clarity and sophistication.

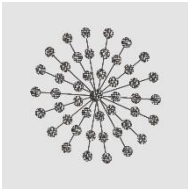


Centaur

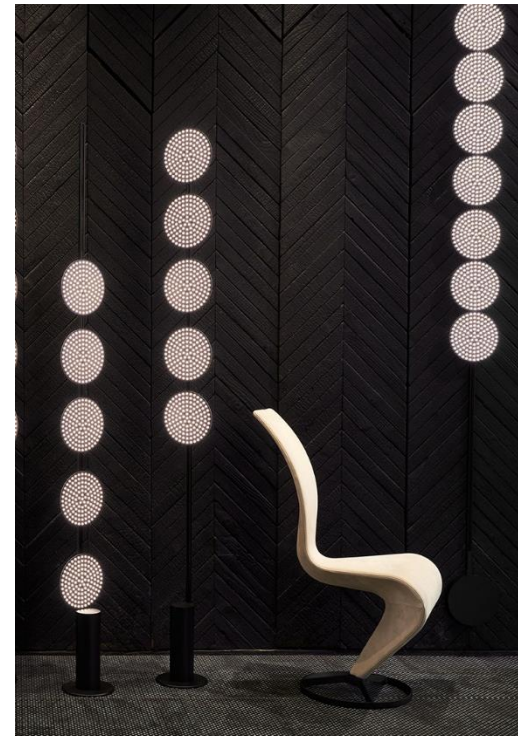
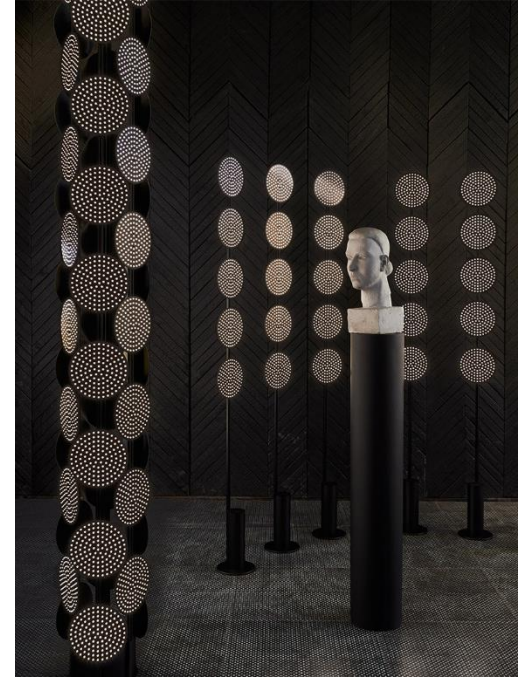


Code

- Stripped of diffusers, lenses, and secondary optics, each board reveals the circuit and flow of power, creating a visually striking and technically transparent lighting solution.
- Includes the subseries Totem Dot, Beacon Dot, Beacon Grid, Screen Dot, Screen Grid, and Explosion Dot, each offering unique design elements and lighting capabilities for tailored lighting solutions.
- Designed for portable and surface wall/ceiling installations, Code supports various sculptural forms and configurations, making it adaptable to a wide range of architectural and design needs.



Code

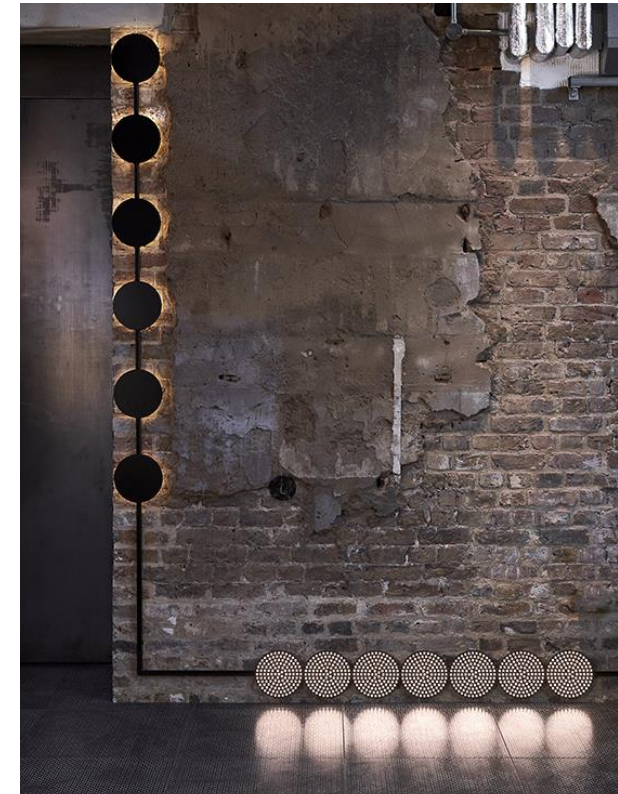


Code System

- Code System features three LED light sources – Dot, Grid, and Dash – based on the fundamental shapes of round, square, and line. These elements form a modular kit, offering limitless opportunities to create striking graphic lighting solutions.
- When dimmed, the boards transform into decorative elements, creating captivating graphic patterns that appear to float elegantly against black backgrounds.
- Seamlessly integrates onto ceilings or walls, with custom lengths and inserts available to tailor the system to any space, ensuring a perfect fit for every project.
- The natural evolution of the Minimal Track, featuring the smallest track possible while enabling individual control of each luminaire and endless configuration options.



Code System



Comet

- Comet is a circular pendant light with a clean, contemporary look and a subtle futuristic flair.
- Its slim and lively silhouette makes it ideal for environments like hotels, offices, and modern homes.
- Suspended by fine steel cables, the light seems to hover in the air, offering both elegance and stability.
- The glowing ring and round form create a bold visual impact that blends refinement with a playful touch.
- A perfect choice for adding personality and style to any interior space.



Comet



Compacto

- Compacto is a family of ceiling-mounted and suspended fixtures known for their extremely small footprint.
- Despite their size, these spotlights offer multiple configuration options, such as recessed sources, dark light optics, and various diffusers.
- Made from painted aluminum with an integrated heat sink, they blend functionality with sleek, modern design.
- Their minimal look allows for effortless integration in a wide range of architectural and interior settings.
- Ideal for projects requiring discreet yet effective lighting solutions.

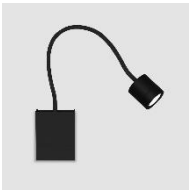


Compacto



Compacto W

- Compacto W is a flexible wall-mounted fixture, perfect for use as a bedside reading light.
- Features a bendable arm wrapped in anthracite fabric, making it easy to direct the light where needed.
- The anodized aluminum body comes in a variety of color finishes to match different interior styles.
- Includes a built-in on/off switch for quick and easy use.
- With a 400mm extension, it offers both range and adjustability for comfortable reading.
- Designed for use in both residential spaces and hospitality settings.



Compacto W



Glorious Acoustic

- The Glorious collection now features acoustic panels integrated into its luminaires, transforming the previously hollow interior into a functional design element. This innovation enhances both visual appeal and sound quality in any space.
- Designed with both aesthetics and acoustics in mind, the enhanced Glorious collection combines lighting functionality with sound absorption capabilities, creating a versatile solution for modern interiors.
- Building on the popularity of the original Glorious collection, these enhancements maintain the collection's reputation for design excellence while introducing practical benefits for acoustic comfort.
- Select from 25+ standard colors, ensuring limitless customization to complement any interior design.



Glorious Acoustic



Glorious Acoustic Light Panel

- Glorious Acoustic Light Panel offers indirect lighting, creating a seamless appearance on ceilings. They contribute to a clean and modern aesthetic while providing effective illumination without visible light sources.
- Designed to complement the Glorious luminaires, these panels improve room acoustics by reducing echoes and enhancing sound absorption. They contribute to a more comfortable and productive environment.
- The circular shape of the Panels opens up new possibilities for lighting design, allowing for creative arrangements and configurations. They are suitable for a wide range of settings, enhancing both functionality and visual appeal.
- Select from 25+ standard colors, ensuring limitless customization to complement any interior design.

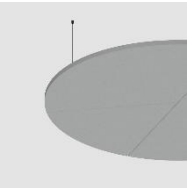


Glorious Acoustic
Light Panel



Glorious Acoustic Panel

- Designed to perfectly complement our Glorious, Glorious Acoustic, Glorious Slim Acoustic, and Glorious Acoustic Light Panel luminaires for a cohesive acoustic solution.
- Improves room acoustics, making it an ideal choice for a variety of settings such as offices, conference rooms, and residential spaces.
- Select from 25+ standard colors, ensuring limitless customization to complement any interior design.



Glorious Acoustic
Panel



Glorious Slim Acoustic

- The Glorious Slim collection now features integrated acoustic panels, transforming its previously hollow interior into a functional design element. This enhancement improves sound quality by reducing echoes and enhancing acoustic comfort in any environment.
- The addition of acoustic materials not only improves sound performance but also enhances the visual appeal of the luminaires. It adds a sophisticated touch to modern interiors while maintaining the sleek and minimalist design of the Glorious Slim collection.
- Glorious Slim offers an eco-friendly choice without compromising environmental responsibility.
- Select from 25+ standard colors, ensuring limitless customization to complement any interior design.



Glorious Slim
Acoustic

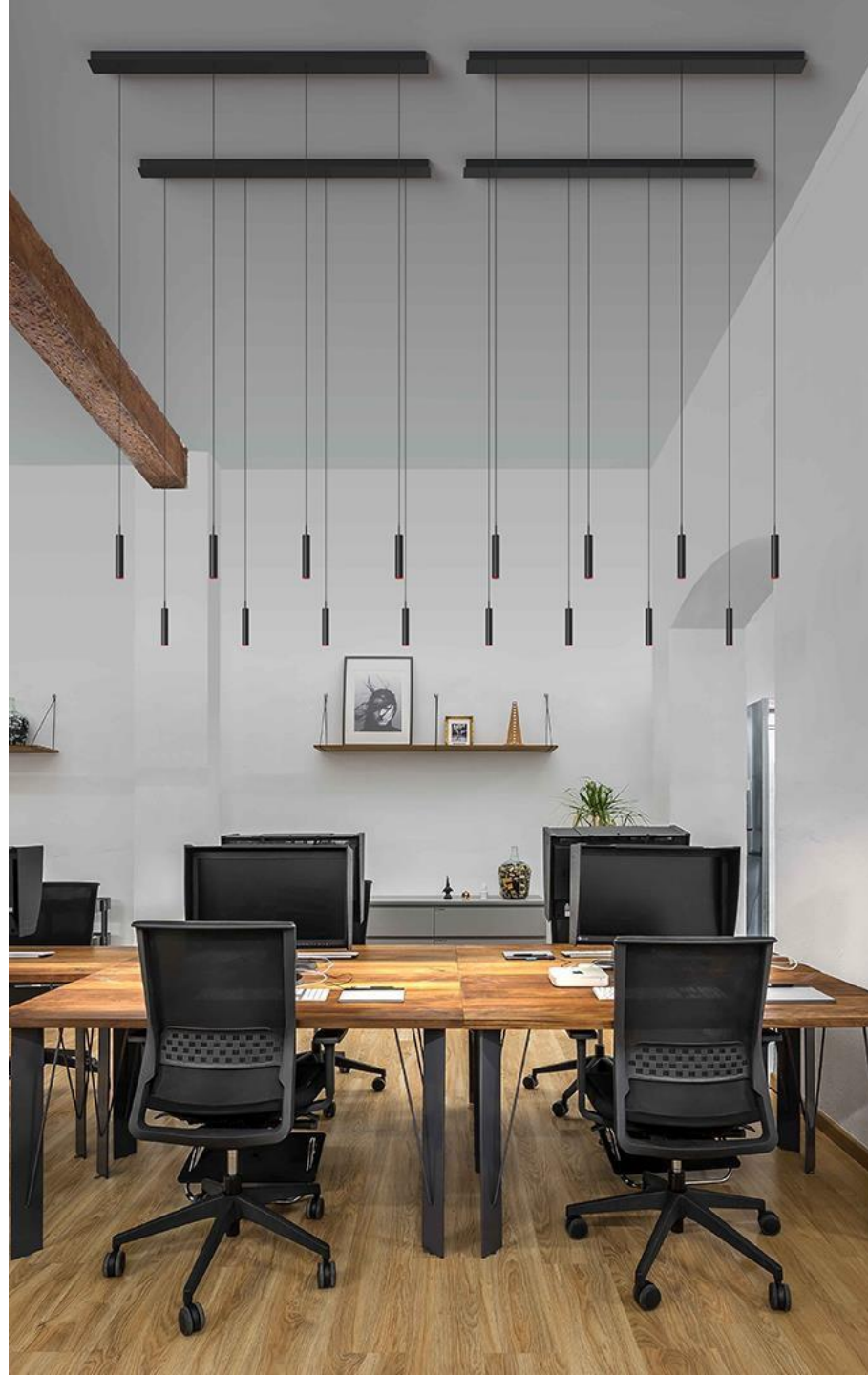


G-Mini Channel

- Allows for creative combinations with various inserts from our product families, enabling unique and custom solutions.
- Ensures reliable and consistent lighting without the need for frequent adjustments, accommodating various ceiling heights.
- Features modular panels that can be arranged into diverse configurations, offering architects and designers extensive design flexibility.
- Available in multiple lighting elements and colors, transforming your ceiling into a customizable canvas for innovative lighting designs.
- Select from 25+ standard colors, ensuring limitless customization to complement any interior design.



G-Mini Channel



G-Mini Round

- Allows for creative combinations with various inserts from our product families, enabling unique and innovative lighting solutions.
- Features modular panels that can be arranged into multiple configurations, offering extensive design flexibility for architects and designers.
- Available in a diverse selection of lighting elements and colors, turning your ceiling into a dynamic and customizable graphic work of art.
- Adaptable for use as a single element, double combination, geometric shape, or flowing arrangement, catering to various design visions and preferences.
- Select from 25+ standard colors, ensuring limitless customization to complement any interior design.



G-Mini Round



Harmony Eclipse

- Harmony Eclipse combines sophistication and versatility with its extremely shallow LED panels featuring an elegant elliptical shape and a distinctive oval hole at the center.
- Available in a range of sizes, finishes, and diffusers, offering customization to fit specific design needs and ensuring a perfect match for any space.
- Provides a sleek, surface-mounted solution, ideal for installations where cutting into ceilings or walls is not an option.
- Suitable for large spaces like restaurants, hotels, supermarkets, exhibition halls, and museums, as well as residential and retail settings, delivering both style and functionality.
- Features a driver for wireless remote control and offers customization services upon request, meeting the highest standards of modern lighting.



Harmony Eclipse



Harmony Ring

- Harmony Ring is a modern lighting solution featuring ultra-shallow LED panels in a sleek circular shape, available in surface wall, ceiling, and suspension models.
- Offered in various sizes, finishes, and diffusers, with options for a distinctive circular hole in the center or off-center, adding a unique design element.
- Ideal for spaces where traditional recessed lighting is not feasible, providing a versatile surface-mounted solution for restaurants, hotels, museums, and work environments.
- Available in white, black, and gold, with optional wireless remote control and customization services to meet specific design and functional requirements.

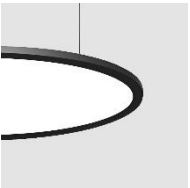


Harmony Ring



Harmony Round

- Harmony Round is a versatile lighting solution featuring extremely shallow LED panels available in recessed, surface, and suspension models, with a sleek circular design that blends seamlessly into any architectural setting.
- Offered in various diameters and diffusers, it allows for tailored compositions to meet specific design requirements and is available in white, black, and gold.
- Ideal for commercial and workspace applications such as hotels, restaurants, exhibition halls, museums, and offices, delivering high luminous efficiency and uniform, glare-free illumination.
- Includes options for wireless remote control via a dedicated driver and offers customization services upon request, making it a refined solution for enhancing any environment.



Harmony Round

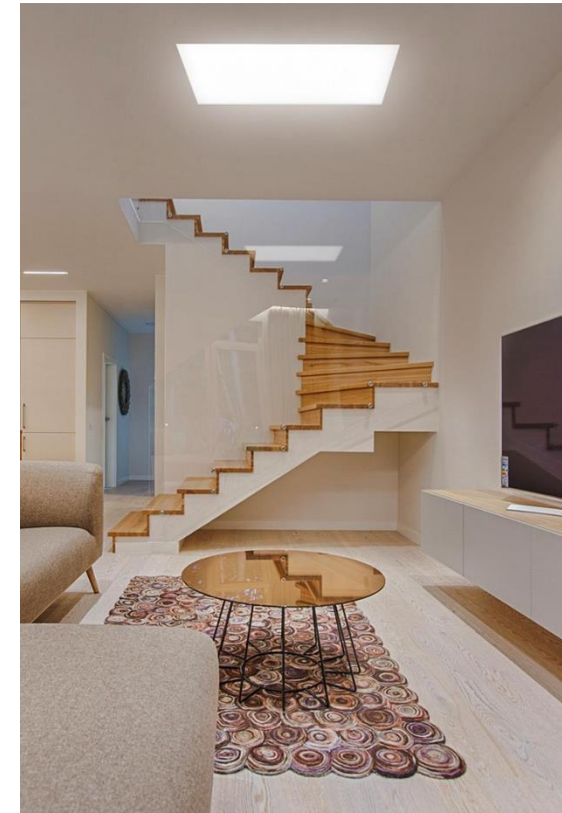


Harmony Square

- Harmony Square is a series of ultra-thin LED panels with a sleek frame, designed for seamless integration into various architectural settings.
- Available in multiple sizes, finishes, and diffuser options, offering customization and unparalleled flexibility for specific project requirements.
- Ideal for commercial and workspace installations, including hotels, restaurants, supermarkets, museums, and offices, delivering high-quality, uniform, and glare-free lighting.
- Features ultra-shallow panels, just 20mm thick, that provide even light distribution and maintain excellent luminous efficiency.
- Combines a clean, minimalist geometric design with modern LED technology, enhancing any environment when mounted on walls, ceilings, or suspended.

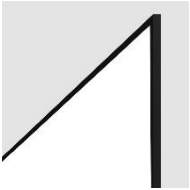


Harmony Square



Harmony-Uniform

- Harmony-Uniform is a next-generation LED panel built for smooth integration into architectural elements, furnishings, and interior design.
- Perfect for use in mirrors, kitchens, and shelving, it adapts to various design contexts thanks to its fully customizable size, LED tone, and mounting options.
- It comes in two finishes: a white opal diffuser or a custom-printed graphic (non-removable), offering flexibility in aesthetic presentation.
- Designed with precision and purpose, it turns everyday surfaces into elegant, luminous features.
- This versatile solution brings balance and sophistication to any space, supporting both functional and decorative lighting needs.



Harmony-Uniform



Imagine Micro

- Designed for diverse projects, the Imagine Micro series blends effortlessly into any room design.
- Offers a wide range of luminaire body colors, allowing for personalized and adaptable lighting solutions.
- Suitable for both plasterboard and concrete ceilings with two different ceiling openings, enhancing adaptability.
- Combines technical sophistication with a minimalist design, making it perfect for any architectural setting.
- Select from 25+ standard colors, ensuring limitless customization to complement any interior design.



Imagine Micro



Imagine Micro Flex

- Delivers exceptional brightness, making it ideal for illuminating various objects in shops, galleries, and museums.
- Adjustable beam angle from 14° to 48°, allowing for precise lighting control to meet diverse needs.
- Equipped with a COB module featuring a standard CRI of 90, ensuring accurate and vibrant color representation.
- Integrated plano-convex lens with an ingenious adjustment system ensures flawless focusing and seamless beam transitions.
- Select from 25+ standard colors, ensuring limitless customization to complement any interior design.



Imagine Micro Flex



Infinite Hexagon

- Infinite Hexagon is a collection of LED panel lights for ceiling or suspended installation, featuring a bold hexagonal form and a seamless, trimless edge.
- It offers a fresh, contemporary approach to lighting, designed to adapt to a variety of spaces and functional needs.
- Particularly suited for large-scale or corporate interiors, where consistent, high-quality lighting is key.
- Comes in a range of refined finish options, giving designers freedom to match different styles and aesthetics.
- Its unique shape and flexible configurations make it a distinctive and modern choice for architectural lighting.



Infinite Hexagon



Infinite Honeycomb

- Infinite Honeycomb is a trimless LED panel series that brings a fresh, modern approach to ceiling lighting.
- Designed for large-scale and professional environments, it delivers high-performance illumination that supports both task and ambient lighting needs.
- Its distinctive hexagonal form with an open center adds architectural interest while serving a functional role.
- Available in surface-mounted or suspended formats, offering flexibility across a range of interior applications.
- A variety of elegant finish options allow for easy integration into different design styles.
- With its balance of visual impact and lighting efficiency, Infinite Honeycomb is a smart solution for contemporary spaces that value both form and function.



Infinite Honeycomb

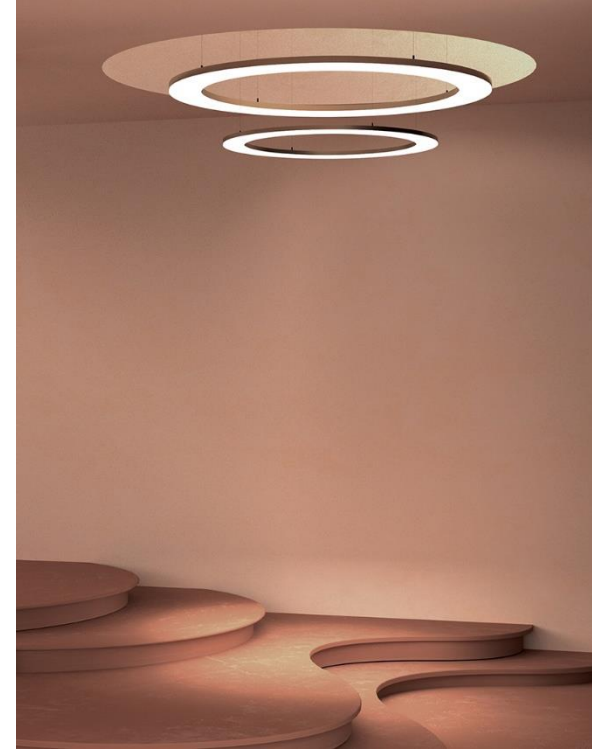


Infinite Ring

- A collection of frameless LED panels with a striking circular shape and a distinctive smaller central aperture.
- Available in various sizes, finishes, and diffusers, offering unparalleled versatility and customization to meet specific design needs.
- Features an optional wireless remote control driver and customization services upon request, transforming these panels into bold furnishing elements.
- Provides exceptional light quality and efficiency, emitting a soft, diffused glow for uniform light distribution that enhances any atmosphere.
- Combines minimalist, geometric shapes with cutting-edge LED technology, making it an ideal solution for stylish and practical lighting applications.



Infinite Ring



Infinite Round

- Infinite Round is an elegant lighting solution featuring frameless, circular LED panels available in recessed, surface wall/ceiling, and suspension options, designed for diverse lighting needs.
- These ultra-shallow panels are offered in three sizes with customizable diameters, finishes, and diffusers, available in white, black, and gold.
- Ideal for commercial and work environments such as hotels, restaurants, supermarkets, exhibition halls, museums, and offices, Infinite Round delivers uniform, glare-free illumination with high luminous efficiency.
- Includes options for wireless remote control and customization services upon request, combining refined design with exceptional functionality to enhance architectural aesthetics.



Infinite Round



Infinite Square

- Infinite Square offers a versatile range of LED lighting solutions, including recessed, surface wall/ceiling, and suspension options.
- Features ultra-shallow, frameless square LED panels that seamlessly blend into any environment, serving as both lighting fixtures and integral furnishing elements with a distinctive personality.
- Available in various sizes, finishes, and diffusers, ensuring customization to meet specific aesthetic and functional requirements.
- Combines modern design with exceptional light quality and efficiency, providing both form and function.
- Includes an option for wireless remote control and a customization service available on request, delivering reliable, maintainable, and aesthetically pleasing solutions.

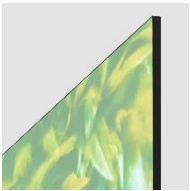


Infinite Square



Infinite-Canvas

- Infinite-Canvas is a flexible LED panel system designed for seamless backlighting and easy customization.
- Features an interchangeable fabric face, allowing for quick graphic updates by simply pressing the fabric into the frame—no tools needed.
- Designed to create large illuminated surfaces with smooth, uniform lighting thanks to the ideal spacing between the LEDs and diffuser.
- Perfect for retail, exhibitions, hospitality spaces, and art installations where high-impact visuals are key.
- Built with precision and adaptability in mind, it offers a versatile solution for transforming environments with light and image.



Infinite-Canvas

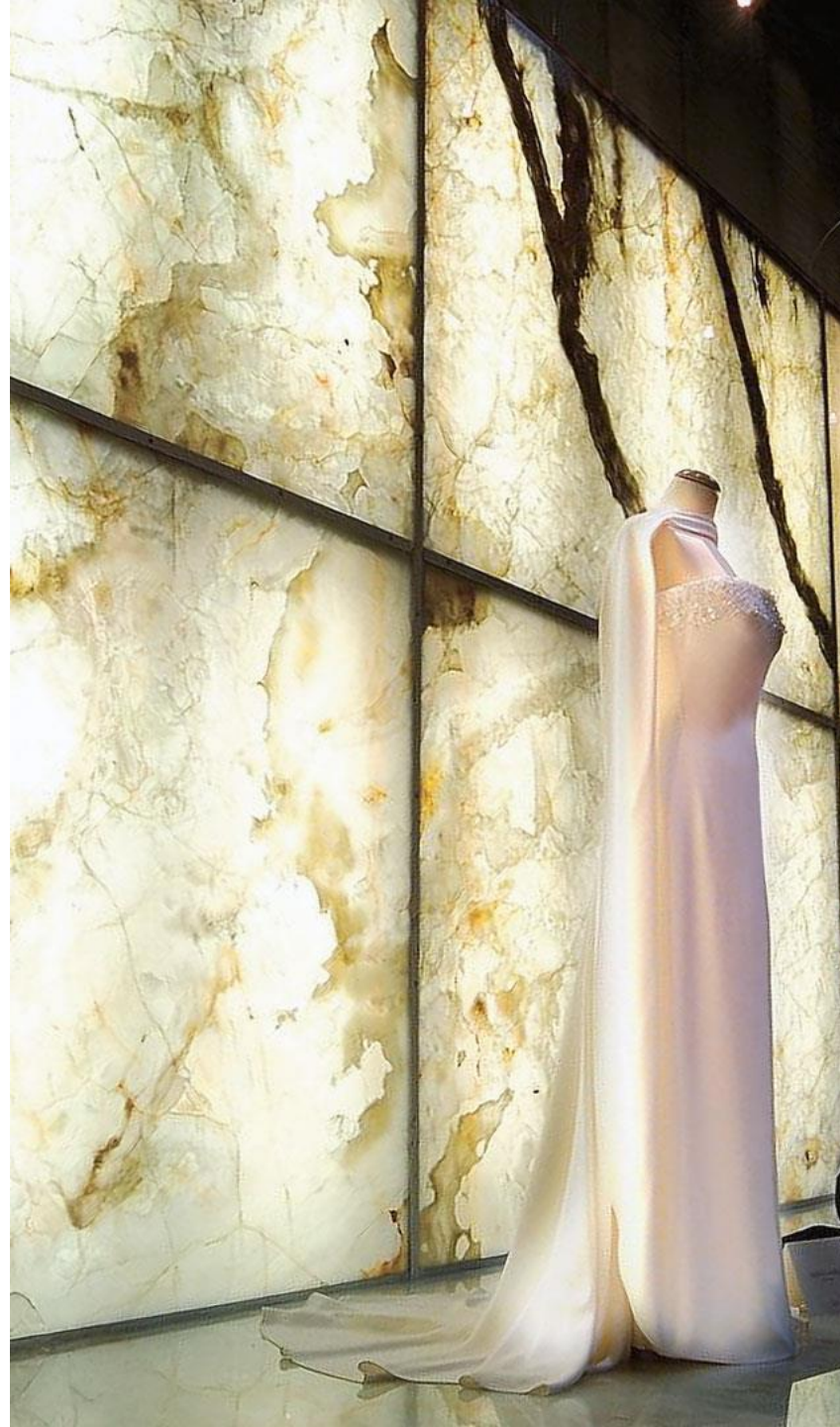


Infinite-Horizon

- Infinite-Horizon is a high-performance LED panel created to backlight transparent or translucent materials with exceptional clarity.
- Ideal for illuminating glass, marble, onyx, and printed graphics, it highlights textures and patterns with dramatic impact.
- Unlike traditional panels, it removes the opal diffuser, exposing the unique laser-marked dotted light effect for a bold visual statement.
- Offers a sleek combination of refined aesthetics and minimal design, elevating surfaces into luminous focal elements.
- Infinite-Horizon delivers timeless elegance and radiant precision across a variety of premium applications.



Infinite-Horizon

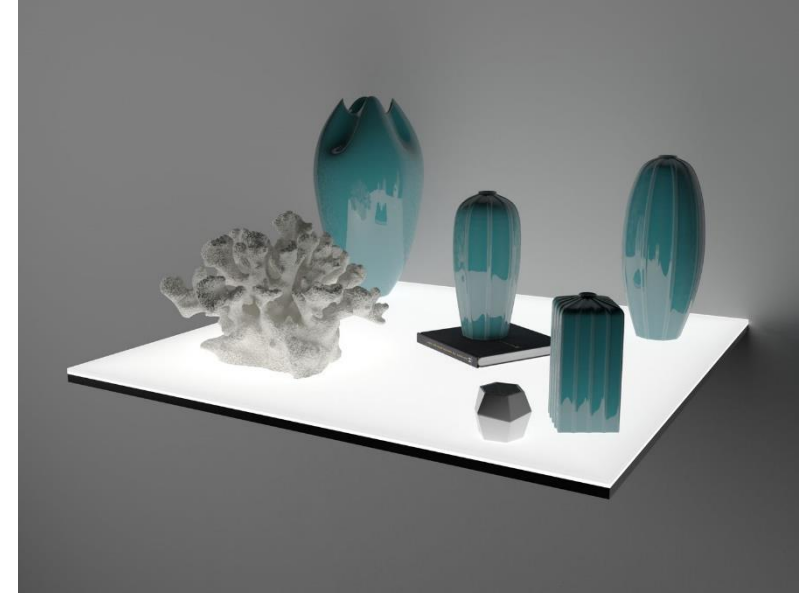


Infinite-Stellar

- Infinite-Stellar is a frame-free LED panel that liberates light from traditional boundaries, enabling pure, uninterrupted illumination.
- Designed for edge-less integration, it blends effortlessly into ceilings, walls, or installations, creating a seamless visual flow.
- Perfect for retail spaces, showrooms, restaurants, display environments, and architectural features where design and light must work as one.
- Offers exceptional light uniformity and soft, natural diffusion, ideal for creating calm, radiant atmospheres.
- Custom-built to exact specifications, Infinite-Stellar turns any surface into a sleek, glowing centerpiece without visible borders.



Infinite-Stellar



Invader Micro Dot

- Elevating the exceptional features of the Invader series, the Invader Micro-Dot introduces the efficiency of its Micro Dot optic.
- Featuring a specialized LFO lens, it guarantees optimal visual comfort while maintaining a low Unified Glare Rating (UGR).
- Choose between two beam angles: medium and very wide flood, offering versatility for targeted or broad-area lighting solutions.
- With advanced optic technology, precise light distribution ensures rooms are illuminated flawlessly.
- Select from 25+ standard colors, ensuring limitless customization to complement any interior design.

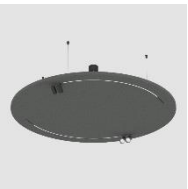


Invader
Micro-Dot



Just Black Acoustic

- Combines the sleek Just Black track with sustainable acoustic panels, offering superior lighting and exceptional sound absorption in one elegant solution.
- Available in three distinct shapes—round, rectangular, and square—the panels can be tailored with Just Black Imagine for precise light direction or Just Black Flexline for soft, ambient lighting. Customize the track inserts and acoustic material colors to complement your aesthetic and functional needs.
- Crafted from recycled plastic bottles, each panel offers high performance and sustainability, with multiple acoustic colors to match any decor and contribute to environmental conservation.
- Just Black Acoustic integrates a track within an acoustic panel, providing unparalleled flexibility and customization.



Just Black Acoustic

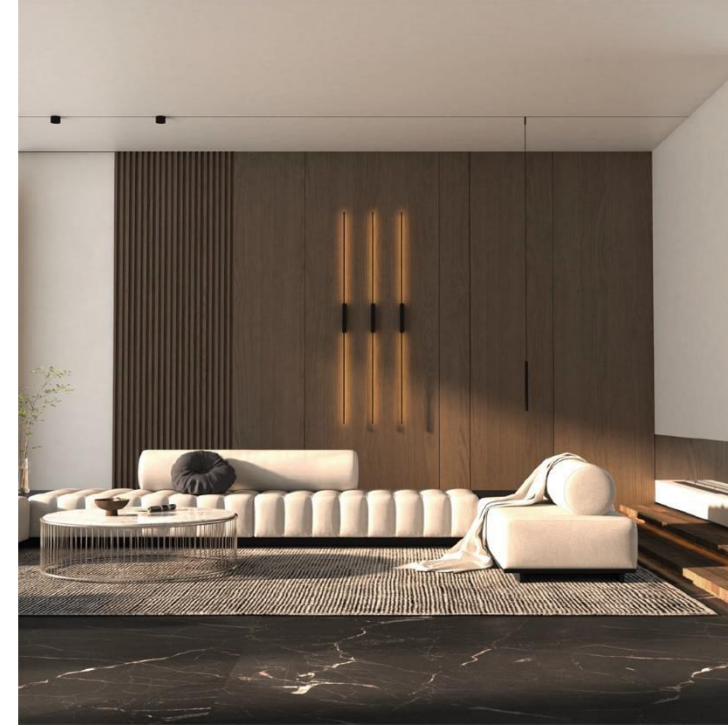
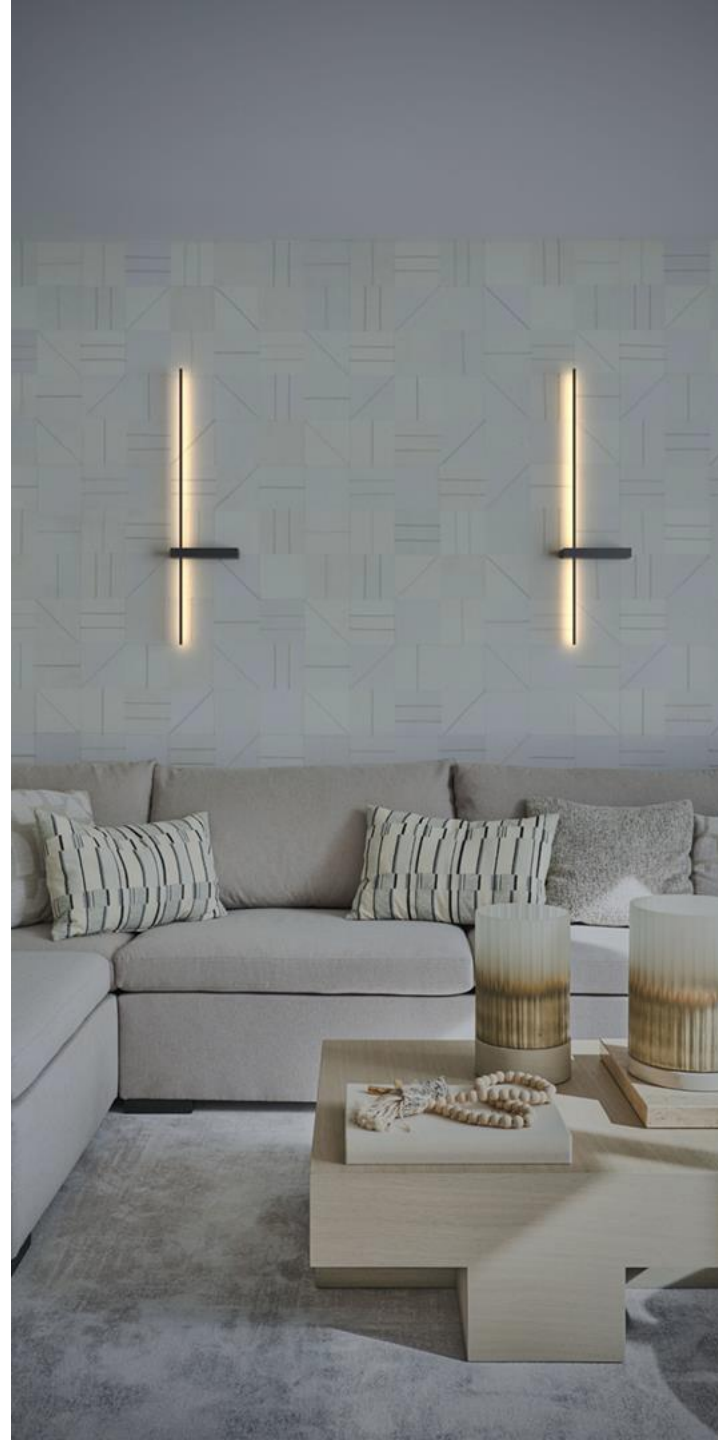


Just Black Line

- Incredibly thin design that defines minimalist elegance, blending seamlessly into any environment while making a bold contemporary statement.
- Available in three versatile lengths, offering flexibility to suit any unique style and design preference.
- One version designed for rotation and pivoting, allowing for endless combination possibilities and creative arrangements.
- Enables the creation of structured patterns or abstract arrangements, allowing you to craft your own stunning visual masterpiece.



Just Black Line



Just Black System

- Features a purist and sleek black finish with a hyper-miniaturized 5mm track width, creating a sophisticated and modern look ideal for hotels, restaurants, and residential areas.
- Available in three versatile versions—trimless for a seamless appearance, rectangular surface-mounted for a bold statement, and round suspended for a modern touch—this system can be tailored to suit any design need.
- With bends and L-connectors, allows for dynamic and customized lighting layouts. It is mountable on both ceilings and walls, extending its application possibilities and offering versatility for any lighting project.
- Magnetically attached inserts ensure easy installation and flexibility, offering spotlights for focused lighting or continuous LED lines for uniform illumination.



Just Black System



Level

- The new Studio sources available with the Level system provide a unique linear lighting solution, delivering later illumination to enhance spatial ambiance and functionality.
- Each Studio source can rotate up to 90° on both sides, enabling precise directional lighting tailored to the environment's needs.
- Designed to perfectly complement the Level cable system and work with other inserts, Studio sources can be effortlessly added or repositioned at any time, maximizing design versatility.
- Studio's sleek, minimal design aligns with the system's aesthetic, making it ideal for modern architectural lighting projects.

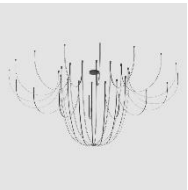


Level

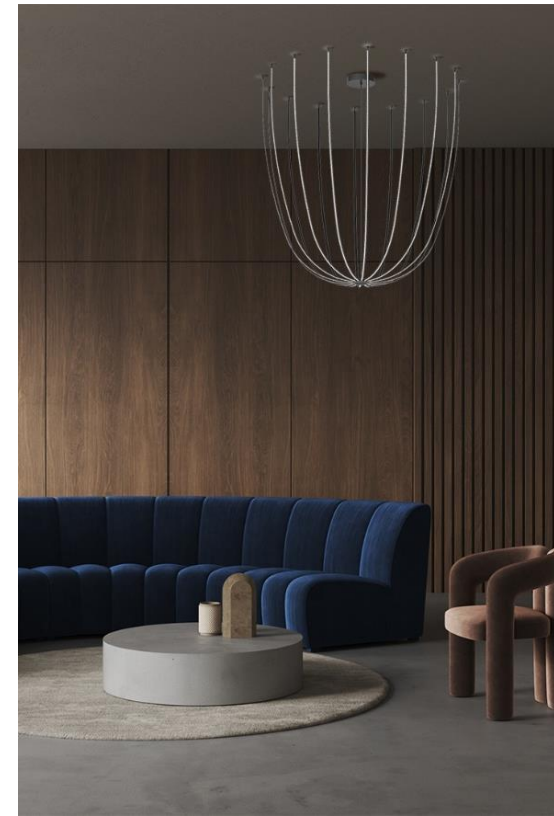
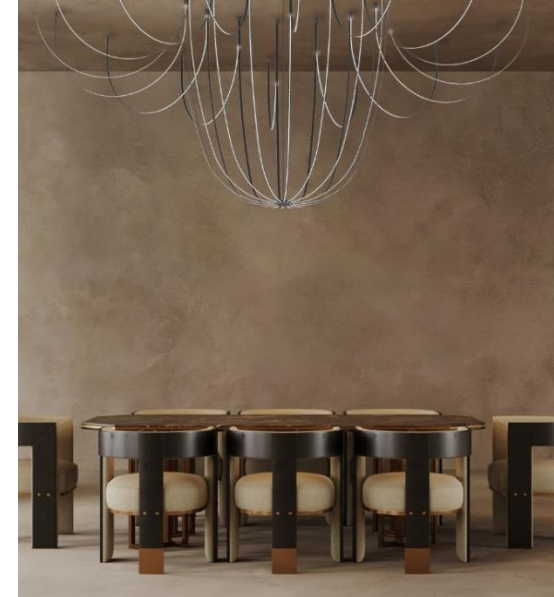


Loop

- Integrates energy-efficient LED technology for sustainable lighting solutions, with the option of placing LED elements to provide direct or indirect lighting.
- Available in three distinct shapes to suit different spatial and aesthetic requirements. Loop also offers the freedom to modify the shape of the fixture with the same components, as each segment is flexible and free-forming to allow for different degrees of curves.
- Combines the classic elegance of a chandelier with a contemporary twist, ideal for both traditional and modern interiors.
- Featuring a unique design, Loop ensures high-quality craftsmanship and artistic appeal, giving designers the flexibility to create a bespoke fixture to suit their needs.



Loop



Lullaby

- Combines elegant aesthetics with functionality, blending sound absorption and illumination for a unique lighting experience.
- Choose from six unique luminaires to create your own light sculpture or select from pre-configured combinations. Lullaby's six panels come in three versatile shapes—horizontal rectangle, vertical rectangle, and square.
- Customize your lighting with multiple acoustic color options and a range of LED temperatures, all featuring a high CRI above 90 for superior light quality.
- Lullaby's innovative microfiber reflectors provide directed light with minimal glare, improving visual comfort and enhancing your space's ambiance.



Lullaby



Nanoperfetto

- Nanoperfetto is a compact recessed spotlight offering exceptional flexibility for accent lighting.
- The fixture can be pulled out and adjusted into three positions: fully recessed, partially extended, or fully exposed.
- Ideal for retail, showrooms, and exhibitions, it provides wide rotation and tilt capabilities for precise light direction.
- Combines performance and aesthetics, functioning as either a discreet or standout element in any design.
- Perfect for both subtle ambient lighting and focused highlights, adapting seamlessly to various environments.



Nanoperfetto



Oiko Pro Slim

- Oiko Pro Slim is a refined evolution of the Oiko Pro line, featuring a smaller diameter for a more streamlined look.
- Combines compact design with high lighting performance, ideal for modern spaces.
- Available in surface-mounted and recessed versions, offering flexibility across applications.
- Its low installation depth makes it perfect for both accent and ambient lighting.
- Designed for visual comfort, it delivers glare-free illumination in a discreet format.
- Comes in 25+ finish options, allowing for full customization to suit any interior style.

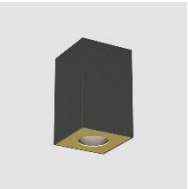


Oiko Pro Slim



Oiko Pro Square

- Features the Oiko Pro reflector in multiple applications, allowing the square form to integrate seamlessly into various design concepts without compromising LED performance.
- Available in surface mounted, recessed, and suspended options, providing limitless installation possibilities.
- Boasts a minimalistic design that blends effortlessly into architecture, ensuring the focus remains on its impeccable light emission.
- Maintains sharp beam angles and high LED performance across different form factors, delivering consistent and high-quality lighting.
- Select from 25+ standard colors, ensuring limitless customization to complement any interior design.

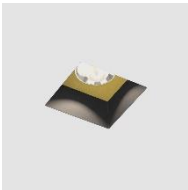


Oiko Pro Square

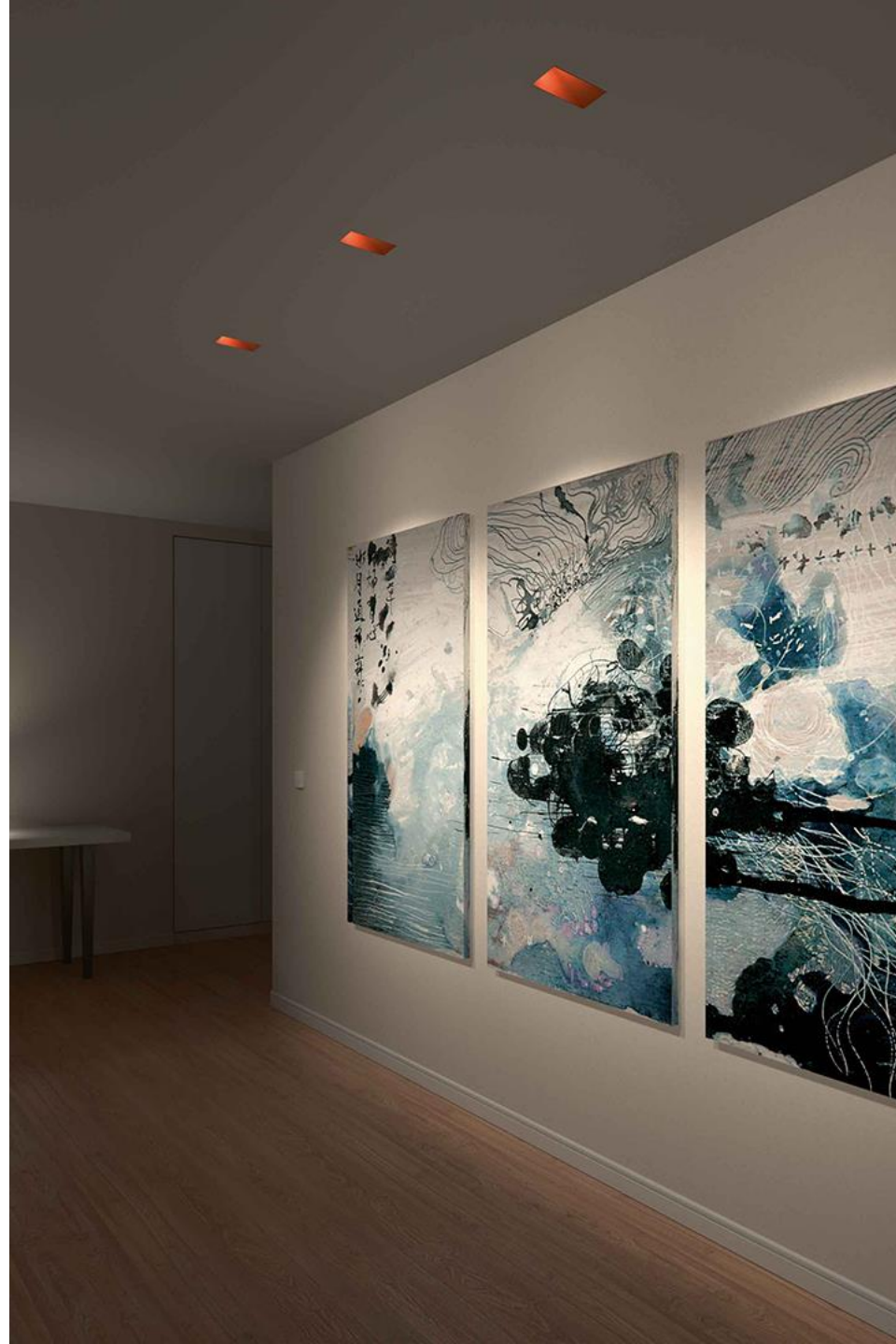


Oiko Pro Square Comfort

- Oiko Pro Square Comfort is a series of square recessed and trimless downlights designed to deliver impeccable performance and aesthetics across various applications.
- The minimalistic form integrates seamlessly into the architecture, providing both accent and ambient lighting.
- Available in multiple sizes, reflectors, and a wide range of color finishes, offering versatility to suit specific project needs.
- Select from 25+ standard colors, ensuring limitless customization to complement any interior design.



Oiko Pro Square
Comfort



Ovalis

- Ovalis is a decorative wall sconce and the first of its kind to offer ceiling wash lighting. Its distinctive oval form with a central cut-out casts light both upward and downward, creating a layered, ambient effect.
- Delivers balanced direct and indirect illumination, ideal for enhancing both function and atmosphere.
- Features angled wallwash reflectors that produce a wide, even light spread across walls and ceilings.
- Perfect for large corridors, brick facades, lobbies, and heritage spaces requiring both design and performance.
- A glass cover protects internal components, making maintenance simple and efficient.
- Offers 25+ color options for seamless integration into any design scheme.

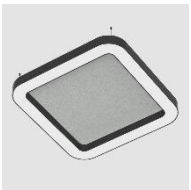


Ovalis



Quantum Acoustic

- The Quantum collection now includes integrated acoustic panels within its luminaires, turning the previously hollow interior into a functional design feature. This upgrade enhances sound quality by reducing reverberation and improving acoustic comfort in any environment.
- Acoustic materials enhance both sound performance and the visual appeal of Quantum luminaires, adding a sophisticated touch to modern interiors while preserving their sleek, minimalist design.
- Quantum luminaires with acoustic enhancement are perfect for offices, educational institutions, and hospitality spaces, offering both lighting and acoustic solutions for optimal comfort and aesthetics.
- Integrating acoustic panels into Quantum luminaires combines functionality and aesthetic appeal, meeting contemporary interior design demands and enhancing room ambiance.
- Select from 25+ standard colors, ensuring limitless customization to complement any interior design.

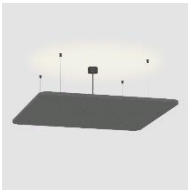


Quantum Acoustic



Quantum Acoustic Light Panel

- Offers indirect lighting, ensuring a seamless appearance on ceilings. This feature provides uniform illumination while maintaining a sleek and modern aesthetic without visible light sources.
- These panels complement Quantum luminaires by improving room acoustics, reducing reverberation, and enhancing sound absorption for a more comfortable and productive environment.
- With their popular geometric shape, they open up new possibilities for creative configurations, ideal for offices, educational facilities, and hospitality environments.
- Select from 25+ standard colors, ensuring limitless customization to complement any interior design.

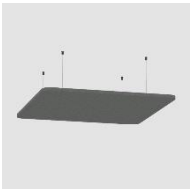


Quantum Acoustic
Light Panel



Quantum Acoustic Panel

- Specifically designed to complement Quantum, Quantum Acoustic, and Quantum Acoustic Light Panel luminaires, enhancing both lighting and room acoustics.
- Improves room acoustics, making it an ideal choice for various settings and applications.
- Select from 25+ standard colors, ensuring limitless customization to complement any interior design.
- Offers endless possibilities for integrating with existing lighting options, creating a cohesive and stylish environment.

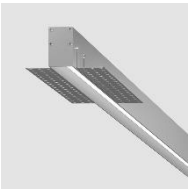


Quantum Acoustic
Panel



Sagittarius

- Sagittarius is a versatile trimless linear lighting solution designed to blend seamlessly into architectural environments while highlighting the beauty of light.
- Available in multiple standard lengths and customizable up to 4 meters, it offers flexibility for wall or ceiling applications.
- Features a rearward LED strip with a choice of opal or prismatic diffusers, creating elegant lines of light with evenly distributed illumination.
- The trimless design allows the profiles to disappear into the architecture, emphasizing the light itself, and is available in white, black, and gold.
- Ideal for crafting subtle light accents or bold linear compositions, adding depth and ambiance to any space.



Sagittarius



Sign Drum

- Features a variety of color finish combinations, including a bold contrast of a luxurious painted gold interior paired with a black or white exterior, or pure black or white for a refined design.
- Available in both surface-mounted and suspension options, Sign Drum provides flexibility for different design applications. The series is also available in two size diameters, with efficient LED boards to maximize the lumen intensity from one source.
- Features unique decorative optics, including Opal Diffuser for perfect illumination and Microprismatic cover for glare-free lighting. In addition, Sparkling Secret emphasizes the sparkling effect of the LEDs, while Vintage Industrial diffuser has a honeycomb feel for a dynamic effect depending on the angle it is viewed.
- Includes a Tunable White color temperature option, allowing for customized lighting moods and enhanced versatility.
- Offers controlled, precise light emission, perfect for modern halls, living areas, public spaces, and corporate offices.



Sign Drum

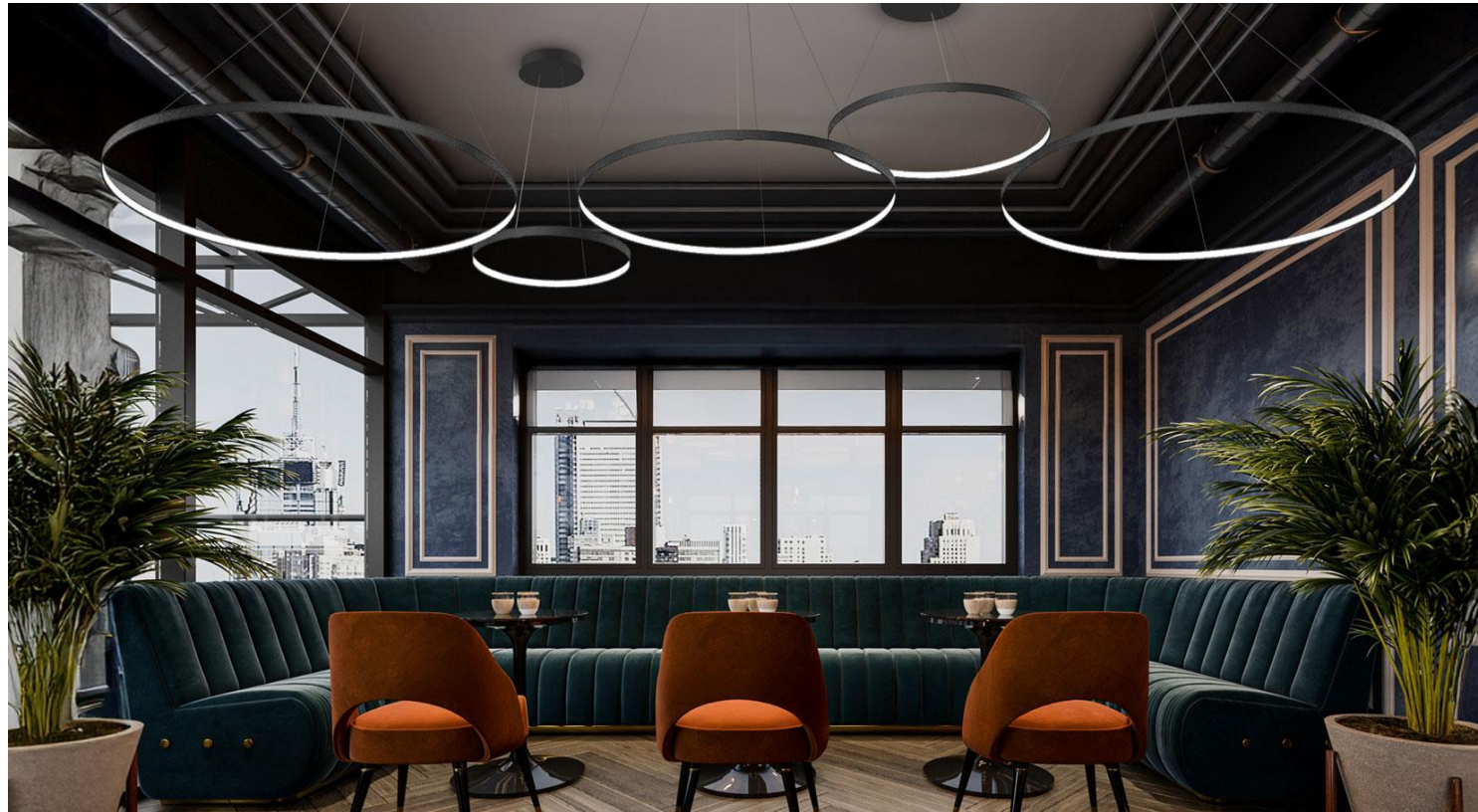


Silhouettes

- Silhouettes is a series of suspended circular and rounded-square luminaires crafted from extruded aluminum.
- Features an LED strip hidden behind an opal polycarbonate diffuser along the inner edge for soft, elegant illumination.
- Combines minimalist design with visual lightness, making it ideal for refined, modern interiors.
- Designed for creative clustering and cascading arrangements, offering flexibility in scale, layout, and composition.
- Available in 25+ standard finishes, allowing for full customization to match any aesthetic.



Silhouettes



Slider

- Modular linear system with T, X, and L corners for maximum flexibility and seamless integration into any space.
- Cost-effective solution with unique optics, easy installation, and excellent glare control to meet workplace lux value requirements.
- Sleek, minimalist design with high lumen output and customizable lens options for tailored lighting moods in offices, commercial spaces, and hospitality venues.
- Offers warm and cool tone options to shape contrasts and create a harmonious ambiance while adapting effortlessly to diverse spatial needs.



Slider



Snooker *Metal*

- The addition of reflective metal finishes in Snooker's repertoire elevates its appeal even further, creating a luxurious and high-quality ambiance in any setting.
- The shimmering surface of the metal finishes enhances creativity, offering designers new possibilities for striking, visually dynamic installations.
- The metallic options complement the innovative Gravity Lift system, making Snooker ideal for lobbies, restaurants, kitchens, and spaces where furniture and lighting layouts frequently change.
- The metal finishes seamlessly integrate with Snooker's multiple standard color options, allowing for limitless combinations to suit any design vision.



Snooker



Studio Collection

- Studio Collection is a premium reinterpretation of the Invader, Imagine, and Hangover series, now enhanced with polished brass and aluminum finishes.
- These updated luminaires are slimmer and more compact, yet maintain high light output and glare-free performance.
- Offers two distinct design components: Model 1: refined with a radial pattern and minimalist elegance. Model 2: bold and expressive, featuring a more elaborate visual motif.
- Each model is available in polished brass or aluminum, with fixture bodies offered in 25+ customizable colors.
- Combines luxury materials and modern design, making it ideal for high-end interiors and statement lighting installations.



Studio Collection



Unity

- Unity is an innovative system that integrates acoustic performance with premium lighting, promoting both comfort and well-being.
- Composed of vertical modules clad in sound-absorbing materials, it enhances spatial acoustics while adding rich texture and color.
- Ideal for creating modular configurations—from clusters and islands to continuous lines—that adapt to different layouts and aesthetics.
- Available in Y, X, T, L, and straight formats, offering high design flexibility across a variety of spaces.
- Paired with high-quality lighting, Unity fosters inviting, productive environments in offices, lounges, or public areas.
- Offers 25+ standard finishes, allowing for full customization to suit any interior design.

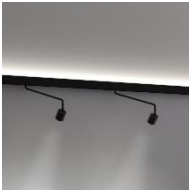


Unity



Viavai

- Viavai is a slim, versatile track lighting system that merges low-voltage functionality with linear lighting in one product.
- Supports direct and indirect illumination, with multiple installation options: suspended, recessed, surface wall, or ceiling-mounted.
- Uses an intuitive snap system for easy attachment of light sources and flexible powering at any point along the track.
- Can be cut to size by a qualified technician for fully tailored installations.
- Maintains seamless, uninterrupted light throughout curves and joints—no dark spots.
- Compatible with multiple inserts like Bob, Compacto, and Zoom, enabling custom lighting configurations.



Viavai



Victory Acoustic

- The Victory collection now features integrated acoustic panels within its luminaires, turning their hollow interiors into functional design elements that reduce reverberation and enhance acoustic comfort.
- By integrating acoustic materials, the Victory luminaires not only enhance sound performance but also add visual appeal. They blend seamlessly into modern interiors while maintaining the collection's aesthetic and functional integrity.
- Victory luminaires with acoustic enhancement are ideal for offices, retail spaces, and hospitality environments, offering versatile lighting and acoustic solutions that improve comfort and productivity.
- Integrating acoustic panels into Victory luminaires highlights innovation in both lighting and acoustic solutions, enhancing aesthetic quality and environmental comfort.



Victory Acoustic



Victory Acoustic Light Panel

- Offers indirect lighting, ensuring a seamless appearance on ceilings. This feature creates a uniform illumination that enhances the overall aesthetic while minimizing glare.
- These panels complement Victory luminaires by improving room acoustics, reducing echoes, and enhancing sound absorption, creating a more comfortable and productive environment.
- Features a popular geometric shape, offering creative lighting design possibilities for offices, hospitality spaces, and residential interiors.
- Select from 25+ standard colors, ensuring limitless customization to complement any interior design.

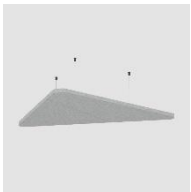


Victory Acoustic
Light Panel



Victory Acoustic Panel

- Specifically designed to complement Victory, Victory Acoustic, and Victory Acoustic Light Panel luminaires, enhancing both lighting and room acoustics.
- Improves room acoustics, making it an ideal choice for various settings and applications.
- Select from 25+ standard colors, ensuring limitless customization to complement any interior design.



Victory Acoustic
Panel



Virgo

- Virgo is a series of sleek LED profiles available in two sizes (1003mm and 2003mm), designed for recessed wall and ceiling applications.
- Features an integrated LED strip with an opal diffuser, blending seamlessly into architectural spaces to let the light take center stage.
- Ideal for creating striking linear light effects, enhancing modern and minimalist design compositions with clean, continuous lines of illumination.
- Suitable for both plasterboard and masonry installations, offering maximum versatility for architectural integration.



Virgo



Zoom

- Zoom provides a range of lighting styles, including spotlights and adjustable illumination, perfect for highlighting key features or setting the desired ambiance in any space.
- Featuring a robust aluminum structure and an efficient heat sink, Zoom ensures optimal thermal management and durability, making it a reliable choice for both homes and offices.
- With its unique rotating zoom optic, Zoom allows users to effortlessly adjust the lighting beam from a focused 12 degrees to a wider 46 degrees, offering unparalleled flexibility for accent or broad lighting.
- Whether it's a cozy home setting or a professional office environment, Zoom's diverse lighting solutions seamlessly integrate to enhance the aesthetics and functionality of any space.



Zoom





zaneen.com